

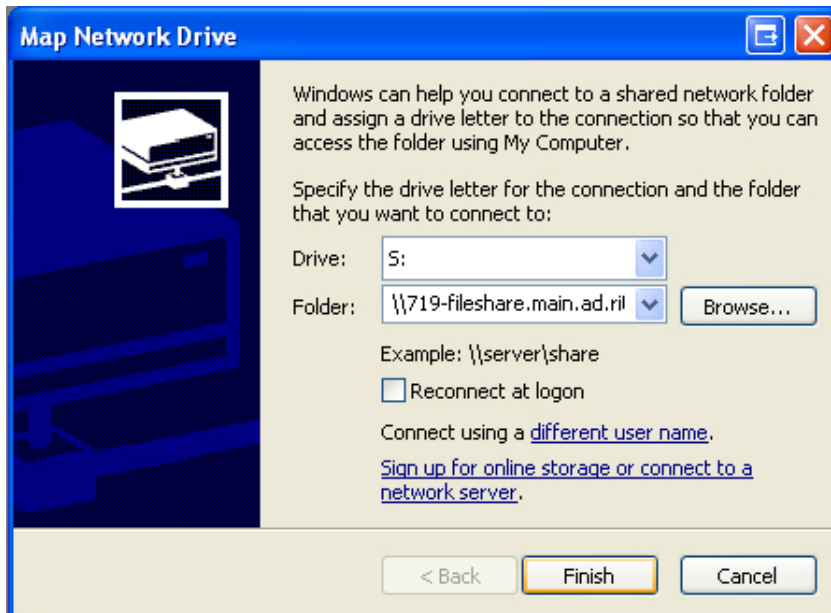
## Map a Network Drive - the Student “S: Drive”

To map the “S: drive” from RIT’s network **ON CAMPUS** using Windows:

### For 32-bit versions of Windows XP and Vista:

To map the “S: drive” from RIT’s network on campus 32-bit Windows XP, 32-bit Vista:

1. Right click on **My Computer** and select **Map Network Drive**
2. Select the drive letter you wish to use to designate the drive, typically ‘S’
3. In the Folder section, type in the following:  
\\719-fileshare.main.ad.rit.edu\students\$\**abc1234**  
(please note, **abc1234** should be replaced with your user account name)



4. Check the “Reconnect at logon” box if you would like to have the S: drive always available.
5. Click **Finish**
6. Enter your username and password when prompted  
(please note, your username will be ‘main\abc1234’)

To map the drive from RIT’s network on a Mac:

1. Go to the **Finder** and select **Connect to Server** under the **Go** tab
2. In the address section, type the following:  
smb://719-fileshare.main.ad.rit.edu/students\$/**abc1234**  
(please note, **abc1234** should be replaced with your user account name)

3. Enter your username and password when prompted  
(please note, your username will be 'main\abc1234')

To map the "S: drive" from RIT's network **OFF CAMPUS** using Windows:

**For 32-bit versions of Windows XP and Vista:**

To map the "S: drive" from outside of RIT's network you need to use VPN (Virtual Private Network). To do this you will need to download and install the following application from RIT ITS.

<https://www.rit.edu/its/services/vpn/>

VPN access is provided by and supported by ITS. For any problems or assistance please contact the ITS help desk at: (585) 475-HELP [4357] or (585) 475-2810 (TTY).

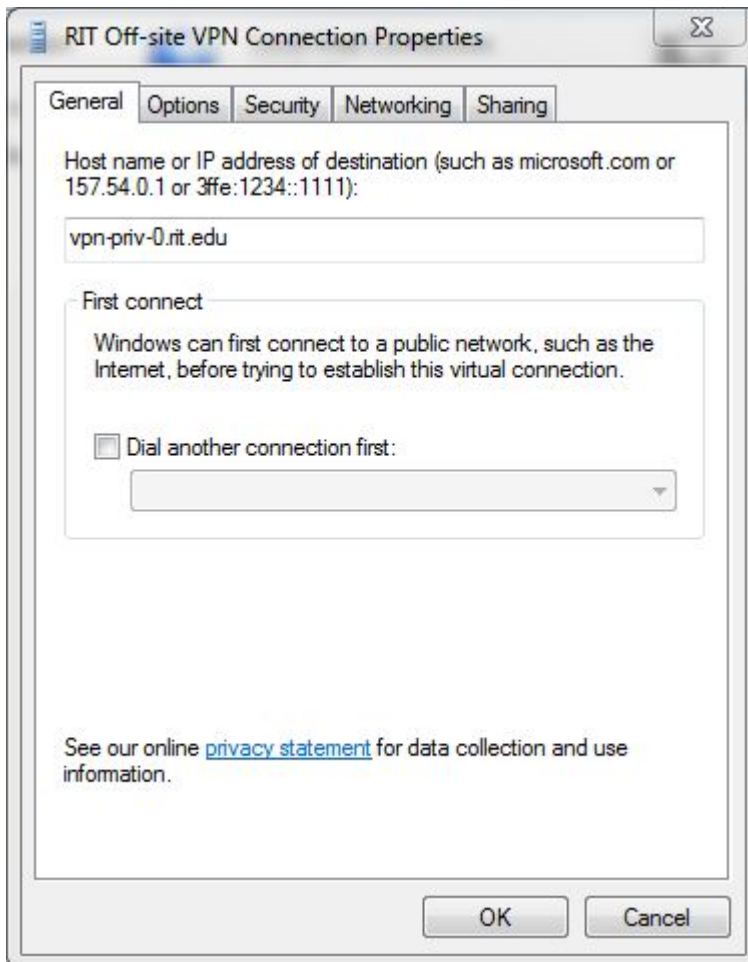
Once connected to RIT's network using VPN, follow the instructions previously listed for setting up the network drive.

**For Windows 7:**

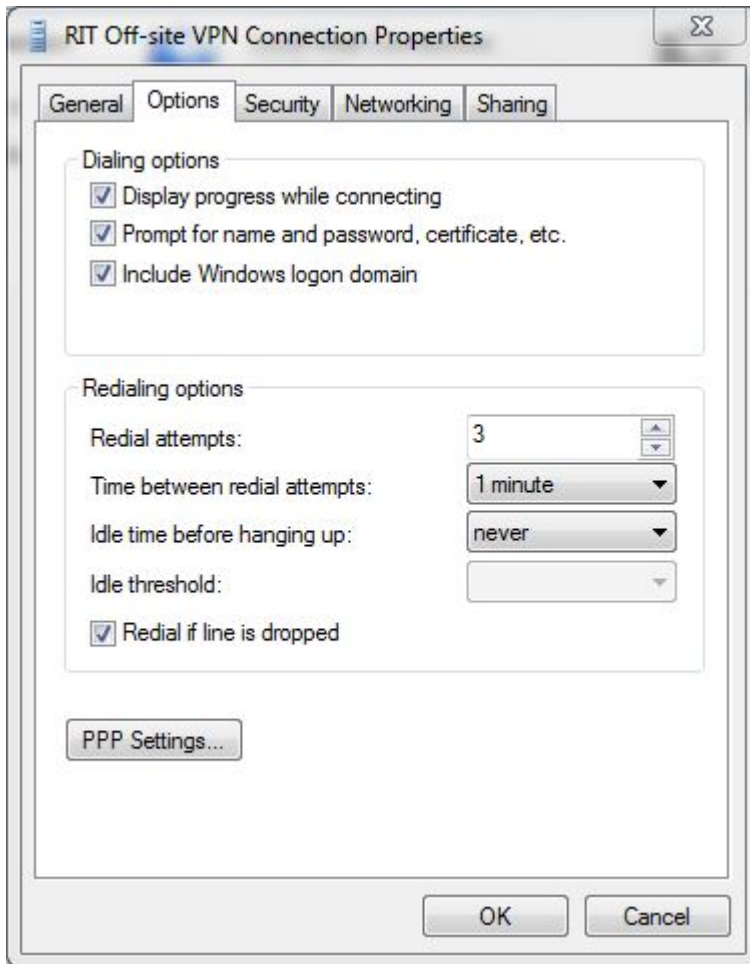
For Windows 7 VPN access, configure the built in VPN client in the OS.

1. Go to **Network and Sharing Center**
2. Select the **Set up a Connection or Network** option
3. Select **Connect to a Workplace**
4. Click on **Use my Internet connection (VPN)**
5. In the Internet Address section, enter: **vpn-priv0.rit.edu**
6. Destination name, enter: VPN
7. Enter your username and password when prompted. The domain should be main.

8. In the **General**, Make sure all settings match the following.

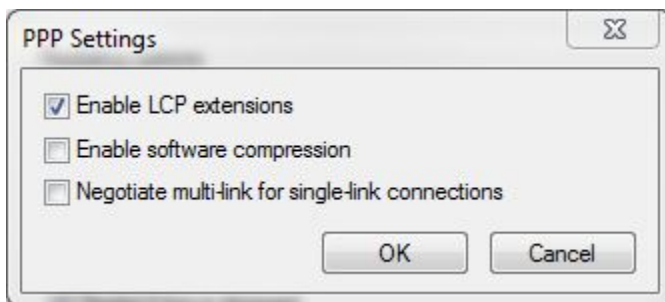


9. In the **Options** tab, Make sure all settings match the following.

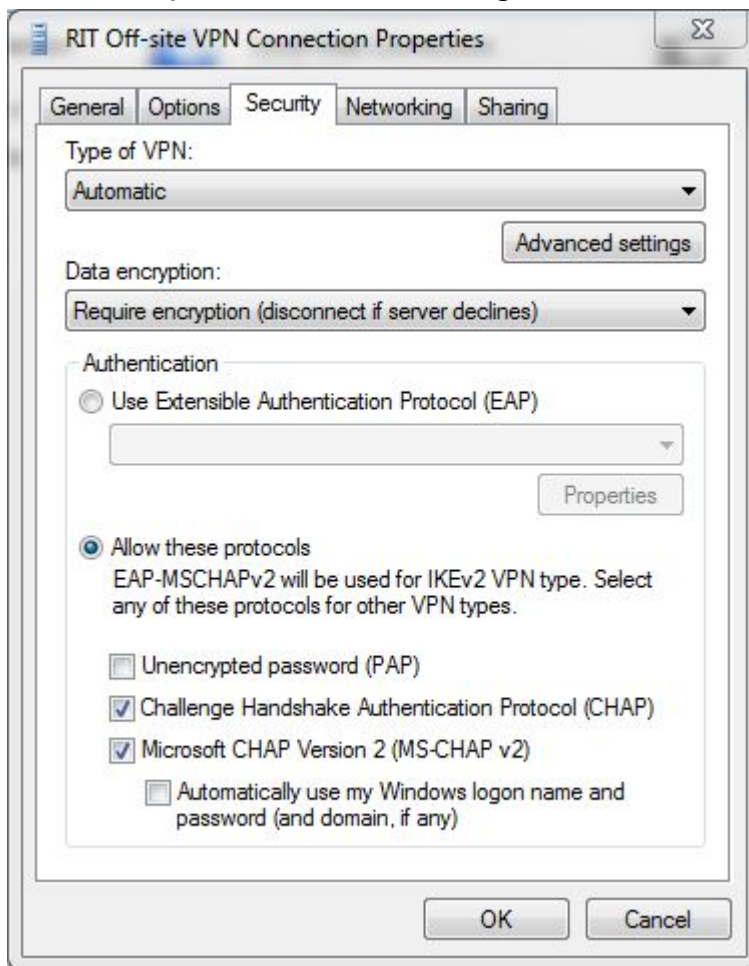


While still in the options tab, select the **PPP Settings...**

Enable the LCP extensions



10. In the **Security** tab, Make sure all settings match the following.



11. Click **OK**

You are now ready to map the network drive like normal, follow the previous instructions for mapping a network drive in windows.