

# IMAGES FROM SCIENCE

*An Exhibition of Scientific Photography*

*October 12–November 8, 2002*

*SPAS Gallery • <http://images.rit.edu>*

ORGANIZED BY

School of Photographic Arts and Sciences

Rochester Institute of Technology

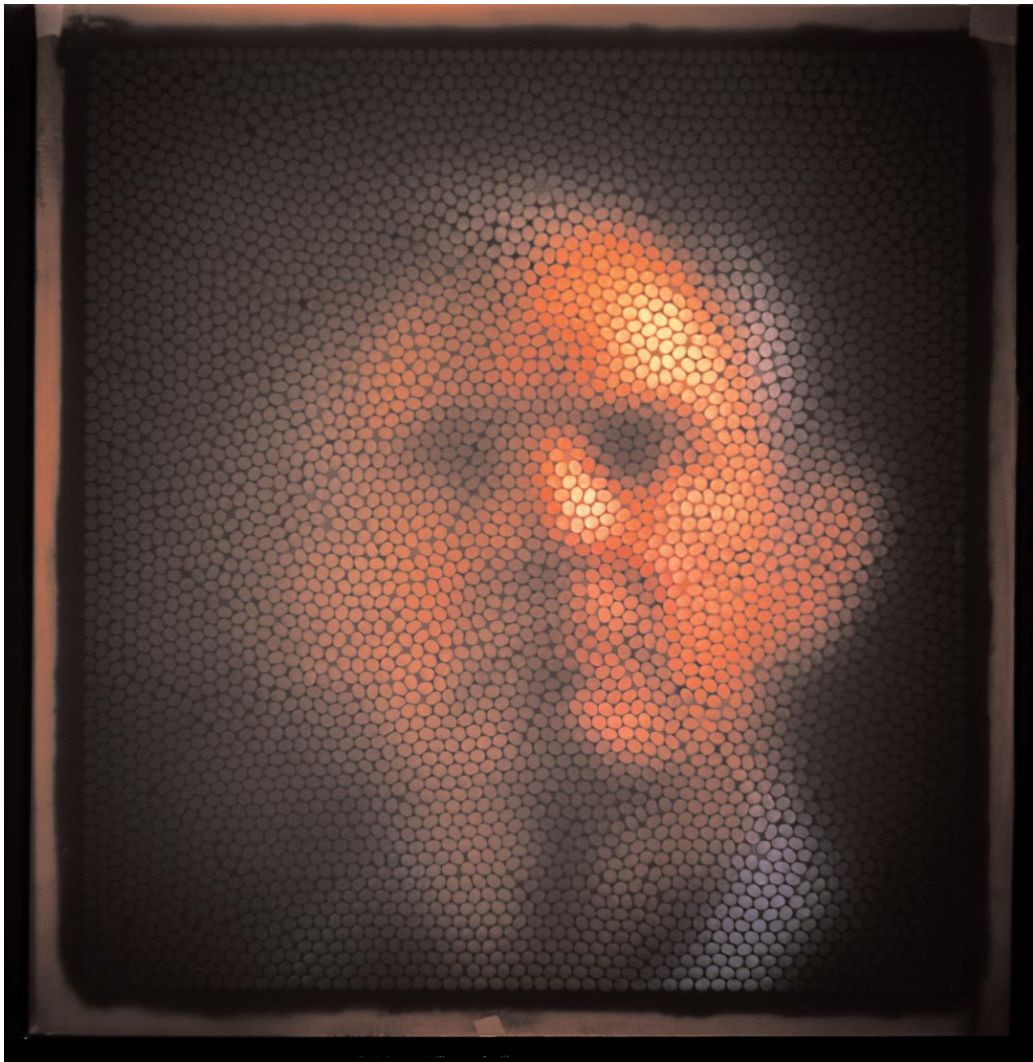
R·I·T

---

SPONSORS: CARL ZEISS • CUSTOM MEDICAL STOCK PHOTO/HELPMED.COM • DURST DICE AMERICA  
LENNART NILSSON AWARD FOUNDATION • RIT CARY GRAPHIC ARTS PRESS • RIT CHESTER F. CARLSON CENTER  
FOR IMAGING SCIENCE • RIT COLLEGE OF IMAGING ARTS AND SCIENCES • RIT OFFICE OF DEVELOPMENT  
RIT SCHOOL OF PHOTOGRAPHIC ARTS AND SCIENCES • ROLLEI, USA • TOPCON AMERICA CORPORATION

---

*Above: Dee Breger. Microplankton. Scanning electron photomicrograph, post-capture digital colorization, 2001. Courtesy of Lamont-Doherty Earth Observatory of Columbia University, Palisades, New York, USA. This poster was produced on a Durst Lambda 180 printer by Durst Dice America. [www.durstdice.com](http://www.durstdice.com)*



# IMAGES FROM SCIENCE

## *An Exhibition of Scientific Photography*

*October 12 – November 8, 2002*

*SPAS Gallery • <http://images.rit.edu>*

ORGANIZED BY

School of Photographic Arts and Sciences  
Rochester Institute of Technology

R·I·T

---

SPONSORS: CARL ZEISS • CUSTOM MEDICAL STOCK PHOTO/HELPMD.COM • DURST DICE AMERICA  
LENNART NILSSON AWARD FOUNDATION • RIT CARY GRAPHIC ARTS PRESS • RIT CHESTER F. CARLSON CENTER  
FOR IMAGING SCIENCE • RIT COLLEGE OF IMAGING ARTS AND SCIENCES • RIT OFFICE OF DEVELOPMENT  
RIT SCHOOL OF PHOTOGRAPHIC ARTS AND SCIENCES • ROLLEI, USA • TOPCON AMERICA CORPORATION

---

*Above: Susanne K. Williams and Adrian Dyer. *Seeing through Straws*. Photographic simulation of insect vision, 2001. Courtesy of the photographers and RMIT, Melbourne, Australia. This poster was produced on a Durst Lambda 180 printer by Durst Dice America.*

[www.durstdice.com](http://www.durstdice.com)



# IMAGES FROM SCIENCE

*An Exhibition of Scientific Photography*

*October 12–November 8, 2002*

*SPAS Gallery • <http://images.rit.edu>*

ORGANIZED BY

School of Photographic Arts and Sciences  
Rochester Institute of Technology

R·I·T

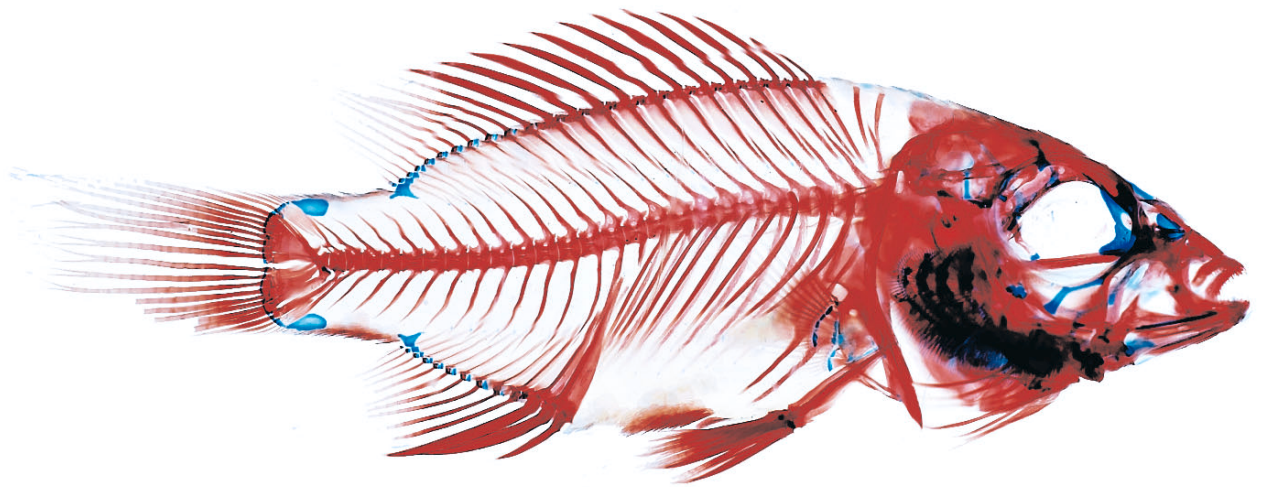
---

SPONSORS: CARL ZEISS • CUSTOM MEDICAL STOCK PHOTO/HELPMD.COM • DURST DICE AMERICA  
LENNART NILSSON AWARD FOUNDATION • RIT CARY GRAPHIC ARTS PRESS • RIT CHESTER F. CARLSON CENTER  
FOR IMAGING SCIENCE • RIT COLLEGE OF IMAGING ARTS AND SCIENCES • RIT OFFICE OF DEVELOPMENT  
RIT SCHOOL OF PHOTOGRAPHIC ARTS AND SCIENCES • ROLLEI, USA • TOPCON AMERICA CORPORATION

---

*Above: Hubble Heritage Team. The Heart of the Whirlpool Galaxy. Composite astrophotograph, 2001. Courtesy of NASA and the Hubble Heritage Team of STScI, Baltimore, Maryland, USA. This poster was produced on a Durst Lambda 180 printer by Durst Dice America.*

*[www.durstdice.com](http://www.durstdice.com)*



# IMAGES FROM SCIENCE

*An Exhibition of Scientific Photography*

*October 12–November 8, 2002*

*SPAS Gallery • <http://images.rit.edu>*

ORGANIZED BY

School of Photographic Arts and Sciences  
Rochester Institute of Technology

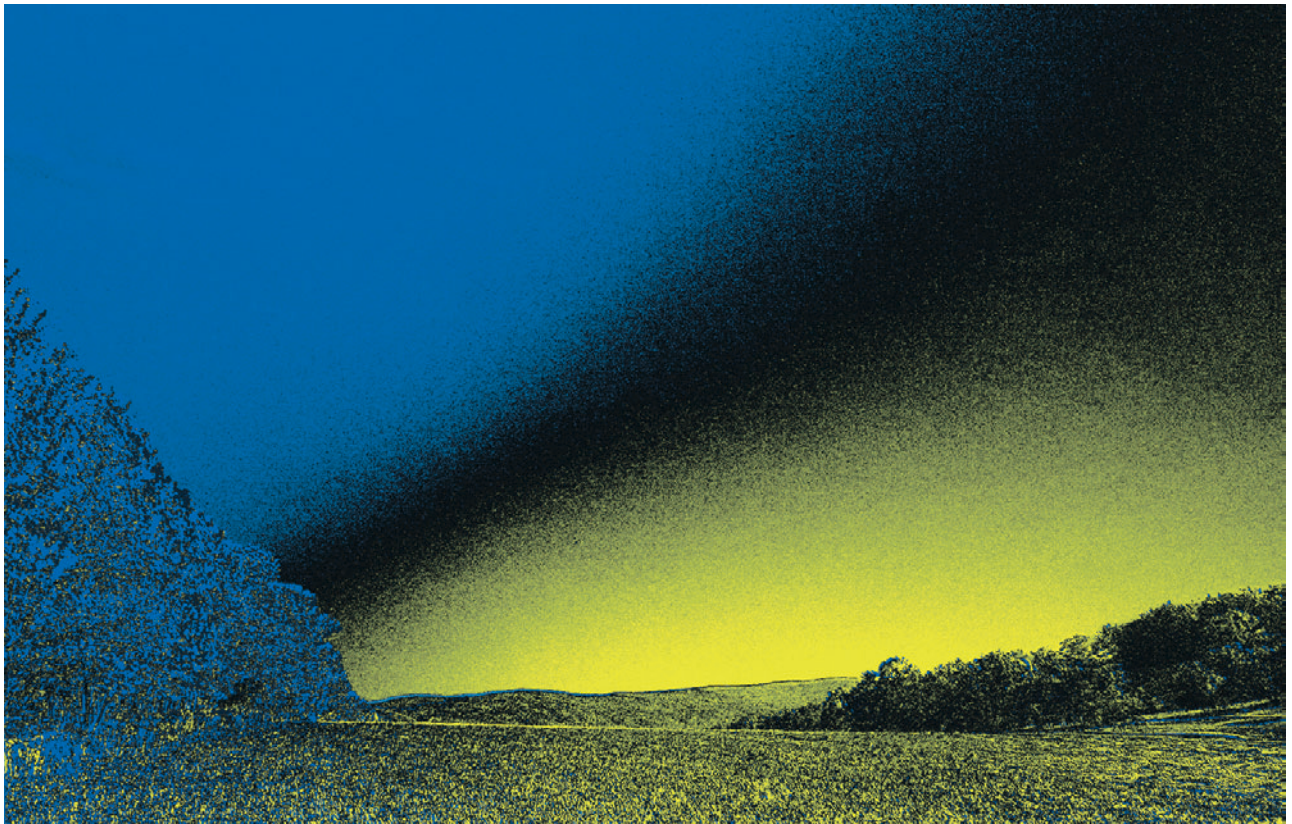
R·I·T

---

SPONSORS: CARL ZEISS • CUSTOM MEDICAL STOCK PHOTO/HELPM.D.COM • DURST DICE AMERICA  
LENNART NILSSON AWARD FOUNDATION • RIT CARY GRAPHIC ARTS PRESS • RIT CHESTER F. CARLSON CENTER  
FOR IMAGING SCIENCE • RIT COLLEGE OF IMAGING ARTS AND SCIENCES • RIT OFFICE OF DEVELOPMENT  
RIT SCHOOL OF PHOTOGRAPHIC ARTS AND SCIENCES • ROLLEI, USA • TOPCON AMERICA CORPORATION

---

*Above: Roy Larimer. Clearly a Fish. Digital photomicrograph, 2001. Courtesy of Microoptics, Inc., Yonkers, New York, USA.  
This poster was produced on a Durst Lambda 180 printer by Durst Dice America. [www.durstdice.com](http://www.durstdice.com)*



# IMAGES FROM SCIENCE

*An Exhibition of Scientific Photography*

*October 12–November 8, 2002*

*SPAS Gallery • <http://images.rit.edu>*

ORGANIZED BY  
School of Photographic Arts and Sciences  
Rochester Institute of Technology

**R·I·T**

---

SPONSORS: CARL ZEISS • CUSTOM MEDICAL STOCK PHOTO/HELPM.D.COM • DURST DICE AMERICA  
LENNART NILSSON AWARD FOUNDATION • RIT CARY GRAPHIC ARTS PRESS • RIT CHESTER F. CARLSON CENTER  
FOR IMAGING SCIENCE • RIT COLLEGE OF IMAGING ARTS AND SCIENCES • RIT OFFICE OF DEVELOPMENT  
RIT SCHOOL OF PHOTOGRAPHIC ARTS AND SCIENCES • ROLLEI, USA • TOPCON AMERICA CORPORATION

---

*Above: Kathleen McCarthy and Matthew H. Smith. Polarized Landscape #4, New York. Digital composite photograph, 2002. Courtesy of the photographers, New York, New York and Madison, Alabama, USA. This poster was produced on a Durst Lambda 180 printer by Durst*

*Dice America. [www.durstdice.com](http://www.durstdice.com)*



# IMAGES FROM SCIENCE

*An Exhibition of Scientific Photography*

*October 12–November 8, 2002*

*SPAS Gallery • <http://images.rit.edu>*

ORGANIZED BY

School of Photographic Arts and Sciences  
Rochester Institute of Technology

R·I·T

---

SPONSORS: CARL ZEISS • CUSTOM MEDICAL STOCK PHOTO/HELPMD.COM • DURST DICE AMERICA  
LENNART NILSSON AWARD FOUNDATION • RIT CARY GRAPHIC ARTS PRESS • RIT CHESTER F. CARLSON CENTER  
FOR IMAGING SCIENCE • RIT COLLEGE OF IMAGING ARTS AND SCIENCES • RIT OFFICE OF DEVELOPMENT  
RIT SCHOOL OF PHOTOGRAPHIC ARTS AND SCIENCES • ROLLEI, USA • TOPCON AMERICA CORPORATION

---

*Above: David Malin. The Great Nebula in Orion. Composite astrophotograph, 1988. Copyright Anglo-Australian Observatory/Royal Observatory, Edinburgh. Photograph from UK Schmidt Plates. This poster was produced on a Durst Lambda 180 printer by Durst Dice America. [www.durstdice.com](http://www.durstdice.com)*



# IMAGES FROM SCIENCE

*An Exhibition of Scientific Photography*

*October 12–November 8, 2002*

*SPAS Gallery • <http://images.rit.edu>*

ORGANIZED BY

School of Photographic Arts and Sciences

Rochester Institute of Technology

R·I·T

---

SPONSORS: CARL ZEISS • CUSTOM MEDICAL STOCK PHOTO/HELPMD.COM • DURST DICE AMERICA  
LENNART NILSSON AWARD FOUNDATION • RIT CARY GRAPHIC ARTS PRESS • RIT CHESTER F. CARLSON CENTER  
FOR IMAGING SCIENCE • RIT COLLEGE OF IMAGING ARTS AND SCIENCES • RIT OFFICE OF DEVELOPMENT  
RIT SCHOOL OF PHOTOGRAPHIC ARTS AND SCIENCES • ROLLEI, USA • TOPCON AMERICA CORPORATION

---

*Above: Amanda Rebbechi. Adult Human Brain. Gelatin silver print, 2000. Courtesy of the photographer and Prince of Wales Hospital, Randwick, Australia. This poster was produced on a Durst Lambda 180 printer by Durst Dice America. [www.durstdice.com](http://www.durstdice.com)*