

# **Dial IP Setup for Windows 2000**

**R·I·T**

## Table of Contents

<a href="#">What is the DialIP setup for Windows 2000?</a>	Page 1
<a href="#">Why should I use DialIP with Windows 2000 Dial-Up Networking?</a>	Page 1
<a href="#">How do I get help with the Dial-Up Networking setup for Windows 2000?</a>	Page 1
<a href="#">How do I set up Windows 2000 to connect with DialIP?</a>	Page 2
<a href="#">How do I connect to DialIP with Windows 2000?</a>	Page 4
<a href="#">Contact Information</a>	Last Page

## What is the DialIP setup for Windows 2000?

To connect your personal computer to the Internet, RIT provides the DialIP remote Internet connection service (see the *DialIP overview* document for more information). To use DialIP with Windows 2000, you need to install and configure Windows 2000 Dial-Up Networking.

You will not see the term “DialIP” in any Microsoft literature. DialIP is an RIT-specific term, and it refers to RIT’s Internet access service. Any operating system (e.g. Windows 95, Windows 98, Windows NT, Windows 2000) requires its own dial-up software to use the DialIP service.

## Why should I use DialIP with Windows 2000 Dial-Up Networking?

The DialIP service gives RIT students, faculty and staff access to the Internet via a standard, residential telephone line.

## How do I get help with the Dial-Up Networking setup for Windows 2000?

- **Microsoft documentation**

For general information you can use the Windows 2000 on-line help. To do this, open the “Start” menu and select “Help.” Click on the “Index” tab and type “Dial-Up Networking” in the resulting dialog box. Double-click on “Dial-Up Networking” when it appears in the list.

Note: For specific instructions on setting up DialIP for Windows 2000, follow the step-by-step procedures outlined in this document below.

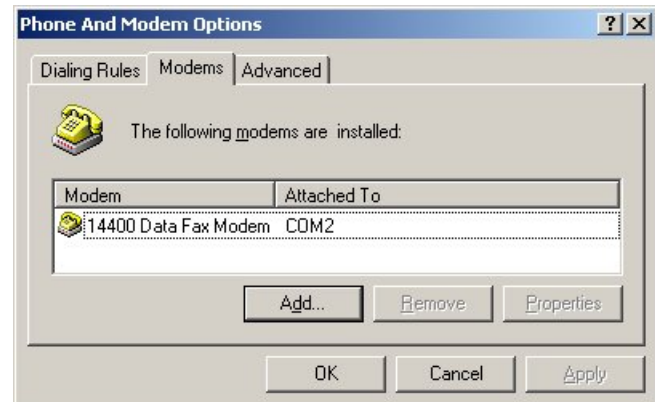
- **Personal help**

See the last page of this document for information on how to contact the ITS HelpDesk. Or, you can view and print ITS HelpDesk documents such as this one, or the *DialIP overview* document, from the ITS HelpDesk documents web page at [https://www.rit.edu/its/help/help\\_documents.html](https://www.rit.edu/its/help/help_documents.html). Copies of these documents are also available in the bins across from the ITS HelpDesk.

## How do I set up Windows 2000 to connect with DialIP?

- **Install a modem**

If you are using an external modem, make sure it is plugged in and turned on. If you are using an internal modem, make sure it is physically installed in your system. This may require the services of a hardware technician. If an internal modem is not properly installed, conflicts may arise between your modem and other hardware in your system. This may cause your modem to operate erratically, or not at all.

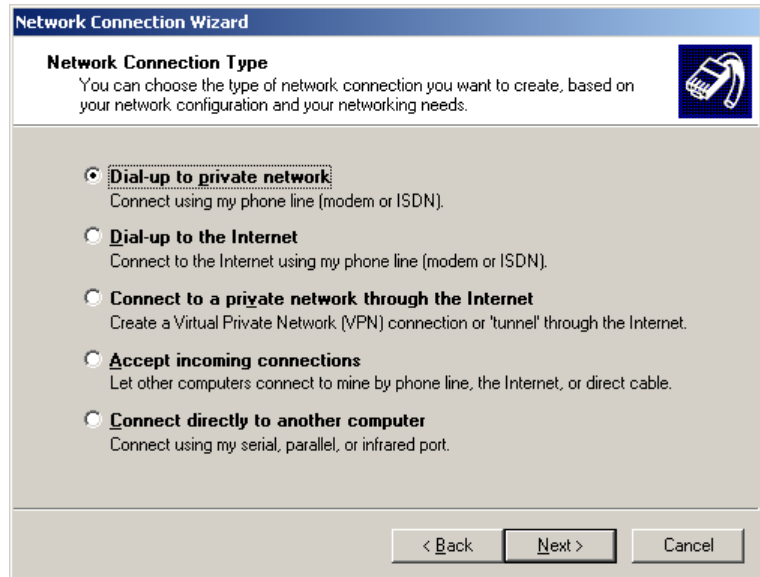


1. Click on the “Start” button, then “Settings” and “Control Panel.” The Control Panel window appears.
2. Double-click the “Phone and Modem Options” icon. The “Phone and Modem Options” window appears.
3. Click on the “Modems” tab. A list of modems currently installed on your computer appears. If your modem appears in the list, skip to the “Set up Dial Up Networking” section.
4. Click the “Add” button. The Add/Remove Hardware Wizard appears.
5. Click the “Next” button. Windows should detect your modem and display the name of the modem in the list. If Windows is not able to detect your modem, then your modem may not be installed properly. Contact the ITS HelpDesk if you need assistance (see contact information at the end of this document).
6. Click the “Next” button, and then click the “Finish” button. This completes the modem installation process.

- **Set up Dial-Up Networking**

1. Click on the “Start” button, then “Settings” and finally “Control Panel.” The Control Panel window appears.
2. Double-click the “Network and Dial-up Connections” icon. The “Network and Dial-up Connections” window appears.
3. Double-click the “Make New Connection” icon. The Network Connection Wizard starts.

4. Click “Next” to continue. The “Network Connection Type” page appears.



5. Select the option for “Dial-up to private network” and click “Next”. The “Phone Number to Dial” page appears.
6. Enter the phone number for the RIT DialIP service as follows:

- Type in **9-427-2000** in the “Phone number:” box if you are calling from an on-campus apartment, residence hall, or office. Do not check the “Use dialing rules” box.
- Type in **427-2000** in the “Phone number:” box if you will always access DialIP from the 585 area code, but not from on-campus. Do not check the “Use dialing rules” box.
- Type in **585** in the “Area code:” box and **427-2000** in the “Phone number:” box if you will ever access DialIP from outside the 585 area code. Click on the “Use dialing rules” box to select it. Note: this method will still dial correctly from within the 585 area code.

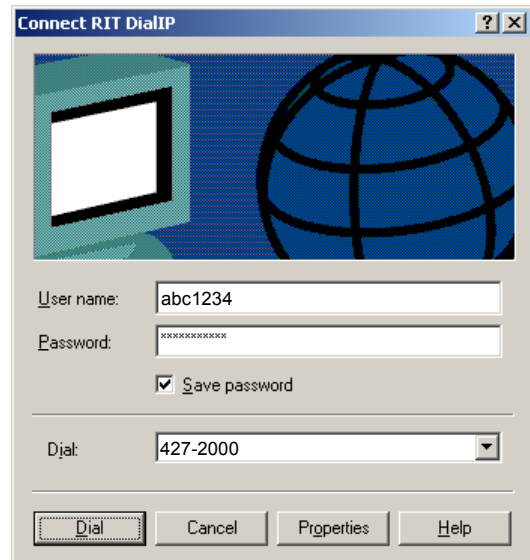
7. Click “Next” to continue. The “Connection Availability” window appears.
8. Click on the “For all users” option to select it.
9. Click “Next”. The “Completing the Network Connection Wizard” page appears.

10. Type in “RIT DialIP” as the name for your connection.
11. Click on the “Add a shortcut to my desktop” box to select it.
12. Click “Finish” to complete the wizard. The “Connect RIT DialIP” window appears. If you want to connect to DialIP now, proceed to step 2 of the “Open a DialIP connection” instructions in the section below.

## How do I connect to DialIP with Windows 2000?

- **Open a DialIP connection**

1. Double-click the desktop icon for RIT DialIP. The “Connect RIT DialIP” window appears.
2. Enter your RIT user name and password, and verify that the correct telephone number (427-2000) is displayed.
3. Click the “Dial” button.
4. A new icon with a bubble appears in the system tray (on the taskbar next to the clock) displaying the status of your connection. The bubble disappears, but the icon blinks whenever data is sent or received from the network. You are connected to the Internet!



- **Open Internet client programs**

Once you are connected to the Internet with DialIP, you can access Internet services by using Internet client programs such as the ones that come pre-installed with Windows 2000. Microsoft Internet Explorer, which allows you to browse the World Wide Web, is an example of one such program.

- **Close a DialIP connection**

To close a DialIP connection, you can double-click on the Dial-Up Networking icon in the system tray (located in the task bar next to the clock). Or, you can double-click the RIT DialIP shortcut icon that you created on your desktop.

### Contacting the ITS HelpDesk

**Phone Support:** (585) 475-HELP or 475-2810 (TTY)

**Email:** [helpdesk@rit.edu](mailto:helpdesk@rit.edu)

**Web Address:** <https://www.rit.edu/its/help/>

**In Person:** Gannett Building, Room 7B-1113

### Contacting the Resnet (Residential Computing) HelpDesk

**Phone Support:** (585) 475-2600 or 475-4927 (TTY)

**Email:** [resnet@rit.edu](mailto:resnet@rit.edu)

**Web Address:** <https://www.rit.edu/its/services/resnet/>

**In Person:** Nathaniel Rochester Hall (Building 43), Room 1034

Copyright © 1998-2003 by Rochester Institute of Technology.  
All rights reserved.

Trademarks and registered trademarks used herein are property of their respective holders.

Designed and produced by the Customer Support (CS) department of the Information & Technology Services (ITS) division at Rochester Institute of Technology (RIT), 1 Lomb Memorial Drive, Rochester, NY 14623, <http://www.rit.edu>

Revision history:

Last Revised: 6/16/2003