

# **Dial IP Setup for Windows XP**

**R·I·T**

## Table of Contents

<a href="#">What is the DialIP setup for Windows XP?</a>	Page 1
<a href="#">Why should I use DialIP with Windows XP Dial-Up Networking?</a>	Page 1
<a href="#">How do I get help with the Dial-Up Networking setup for Windows XP?</a>	Page 1
<a href="#">How do I set up Windows XP to connect with DialIP?</a>	Page 2
<a href="#">How do I connect to DialIP with Windows XP?</a>	Page 5
<a href="#">Contact Information</a>	Last Page

## What is the DialIP setup for Windows XP?

To connect your personal computer to the Internet, RIT provides the DialIP remote Internet connection service (see the *DialIP overview* document for more information). To use DialIP with Windows XP, you need to install and configure Windows XP Dial-Up Networking.

You will not see the term “DialIP” in any Microsoft literature. DialIP is an RIT-specific term and it refers to RIT’s Internet access service. Any operating system (e.g. Windows 95, Windows 98, Windows NT, Windows 2000, and Windows XP) requires its own dial-up software to use the DialIP service.

## Why should I use DialIP with Windows XP Dial-Up Networking?

The DialIP service gives RIT students, faculty and staff access to the Internet via a standard, residential telephone line.

## How do I get help with the Dial-Up Networking setup for Windows XP?

- **Microsoft documentation**

For general information you can use the Windows XP on-line help. To do this, open the “Start” menu and select “Help.” Click on the “Index” tab and type “Dial-Up Networking” in the resulting dialog box. Double-click on “Dial-Up Networking” when it appears in the list.

**Note:** For specific instructions on setting up DialIP for Windows XP, follow the step-by-step procedures outlined in this document below.

- **Personal help**

See the last page of this document for information on how to contact the ITS HelpDesk. You can also view and print ITS HelpDesk documents such as this one, or the *Start: DialIP overview* document, from the ITS HelpDesk documents web page at [https://www.rit.edu/its/help/help\\_documents.html](https://www.rit.edu/its/help/help_documents.html). Copies of these documents are also available in the bins across from the ITS HelpDesk.

## How do I set up Windows XP to connect with DialIP?

- **Install a modem**

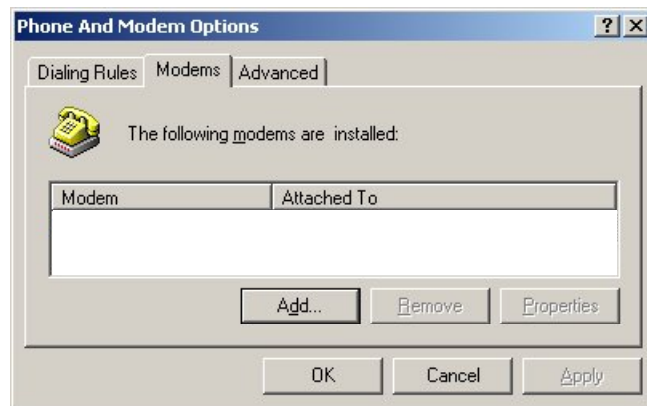
If you are using an external modem, make sure it is plugged in and turned on. If you are using an internal modem, make sure it is physically installed in your system. This may require the services of a hardware technician.

If an internal modem is not properly installed, conflicts may arise between your modem and other hardware in your system. This may cause your modem to operate erratically, or not at all.

After the modem is properly installed, set up the modem as follows:

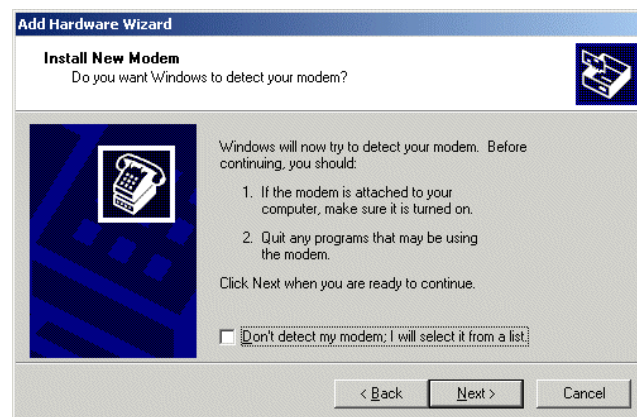
1. Click on the “Start” button, “Settings”, “Control Panel”, and “Phone and Modem Options”. The “Phone and Modem Options” window appears.

**Note:** You may need to set up your calling location and area code before the “Phone and Modem Options” window appears.



2. Click on the “Modems” tab. A list of modems currently installed on your computer appears. If your modem appears in the list, skip to the “Set up Dial Up Networking” section below.
3. Click the “Add” button. The Add/Remove Hardware Wizard appears.

4. Click the “Next” button. Windows should detect your modem and display the name of the modem in the list. If Windows is not able to detect your modem, then your modem may not be installed properly. Contact the ITS HelpDesk.

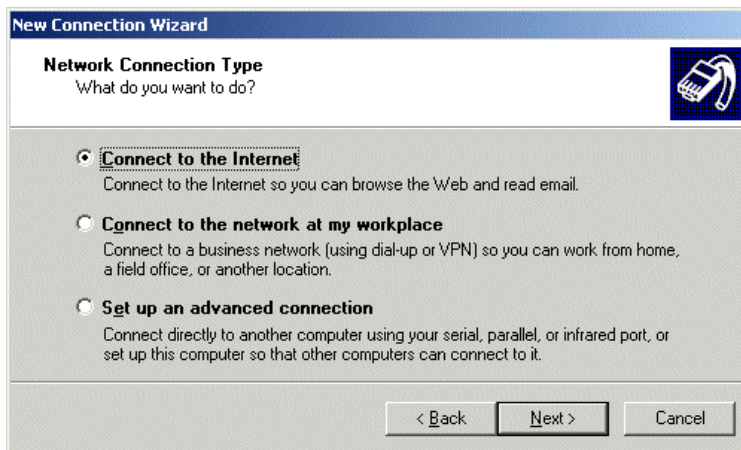


5. Click “Next”, and then click “Finish”. This completes the modem installation process.

- **Set up Dial-Up Networking**

1. Click on the “Start” button, “Settings”, “Control Panel”, “Network Connections”, and “New Connection Wizard”. The New Connection Wizard starts.

2. Click “Next” to continue. The “Network Connection Type” page appears.



3. Select “Connect to the Internet”, and then click “Next”. The “Getting Ready” page appears.

4. Select “Set up my connection manually”, and then click “Next”. The “Internet Connection” page appears.

5. Select “Connect using a dial-up modem”, and then click “Next”. The “Connection Name” page appears.

6. Type **RIT DialIP** in the “ISP Name” box, and then click “Next”. The “Phone Number to Dial” page appears.

7. Enter the phone number for the RIT DialIP service as follows:

- Type in **9-427-2000** in the “Phone number:” box if you are calling from an on-campus apartment, residence hall, or office.
- Type in **427-2000** in the “Phone number:” box if you will always access DialIP from the 585 area code and from off-campus.

8. Click “Next”. The “Connection Availability” page appears. Read the information on the page and make an appropriate selection.

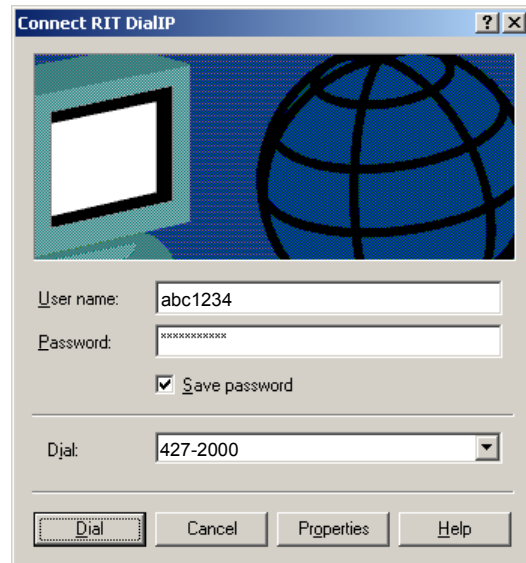
9. Click “Next”. The “Internet Account Information” page appears.
10. Type your RIT username in the “User name:” box.
11. Type your RIT password (it is case sensitive) in the “Password:” box.
12. Type your RIT password again in the “Confirm password:” box.
13. Remove the checkmark from the “Use this account name and password when anyone connects to the Internet from this computer” box.
14. Remove the checkmark from the “Make this the default Internet connection” box.
15. Remove the checkmark from the “Turn on Internet Connection Firewall for this connection” box.
16. Click “Next”. The “Completing the New Connection Wizard” page appears.
17. Place a checkmark in the “Add a shortcut to this connection to my desktop” box.
18. Click “Finish” to complete the wizard. The shortcut appears on your desktop.
19. Click on the “Start” button, “Settings”, “Control Panel”, “Network Connections”, and “RIT DialIP”. The “RIT DialIP Properties” window appears.
20. Click on the “Networking” tab. Make sure there are checkmarks in the “Internet Protocol (TCP/IP)” and “QoS Packet Scheduler” boxes.
21. Click on “Internet Protocol (TCP/IP)” to select it, and then click “Properties”. The “Internet Protocol (TCP/IP) Properties” window appears.
22. Make sure the “Obtain an IP address automatically” and “Obtain DNS server address automatically” options are selected.
23. Click the “Advanced” button. The “Advanced TCP/IP Settings” window appears.
24. Select the “WINS” tab.
25. Remove the checkmark from the “Enable LMHOSTS lookup” box, and then click “OK”.

26. Click “OK” and “OK” again to close the set up windows.

## How do I connect to DialIP with Windows XP?

- **Open a DialIP connection**

1. Double-click the desktop icon for RIT DialIP. The “Connect RIT DialIP” window appears.
2. Verify that your RIT username and password fields, and the correct telephone number (427-2000) are displayed.
3. Click the “Dial” button. A new icon with a bubble appears in the system tray (on the taskbar next to the clock). The icon displays the status of your connection. The bubble disappears, but the icon blinks whenever data is sent or received from the network. You are connected to the Internet!



- **Open Internet client programs**

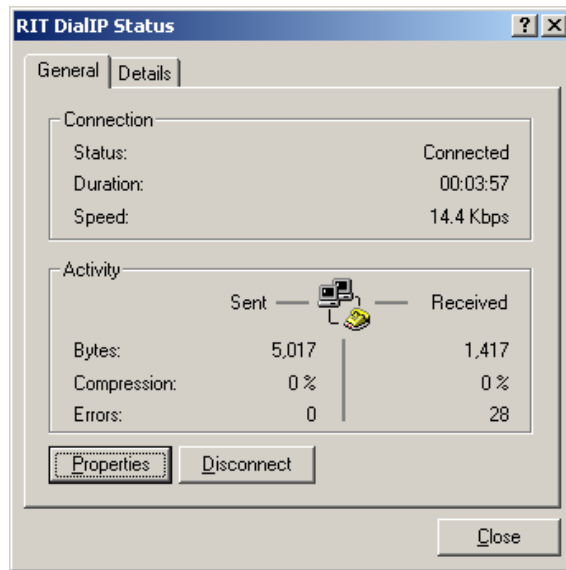
Once you are connected to the Internet with DialIP, you can access Internet services by using Internet client programs such as the ones that are pre-installed with Windows XP. Microsoft Internet Explorer, which allows you to browse the World Wide Web, is an example of one such program.

- **Close a DialIP connection**

To close a DialIP connection, you can double-click on the Dial-Up Networking icon in the system tray (located in the taskbar next to the clock). Or, you can double-click the RIT DialIP shortcut icon that you created on your desktop.



When the “RIT DialIP Status” dialog box appears, click “Disconnect”.



### Contacting the ITS HelpDesk

**Phone Support:** (585) 475-HELP or 475-2810 (TTY)

**Email:** [helpdesk@rit.edu](mailto:helpdesk@rit.edu)

**Web Address:** <https://www.rit.edu/its/help/>

**In Person:** Gannett Building, Room 7B-1113

### Contacting the Resnet (Residential Computing) HelpDesk

**Phone Support:** (585) 475-2600 or 475-4927 (TTY)

**Email:** [resnet@rit.edu](mailto:resnet@rit.edu)

**Web Address:** <https://www.rit.edu/its/services/resnet/>

**In Person:** Nathaniel Rochester Hall (Building 43), Room 1034

Copyright © 1998-2003 by Rochester Institute of Technology.  
All rights reserved.

Trademarks and registered trademarks used herein are property of their respective holders.

Designed and produced by the Customer Support (CS) department of the Information & Technology Services (ITS) division at Rochester Institute of Technology (RIT), 1 Lomb Memorial Drive, Rochester, NY 14623, <http://www.rit.edu>

Revision history:

Last Revised: 6/16/2003