

## What is the DialIP setup for Mac OS?

To connect your personal computer with the DialIP remote Internet access service (see *Start: DialIP overview*), you need to set up the Mac OS operating system. Mac OS requires separate networking software to start a DialIP link.

This document explains how to get and set up the Apple Internet Connection Kit (AICK), version 1.2. Version 1.2 of the Apple Internet Connection Kit comes with Netscape Navigator 3, one of the world's most popular World Wide Web (WWW) browsers. This version of AICK comes with many new Macintosh-compatible computers, is included with Mac OS 7.6 upgrades, and is also available for purchase separately.

Note: An older version of AICK — version 1.1 — came with many Macintosh models, was bundled with Mac OS 7.5.3 upgrades, and was also available for purchase separately. This version has a slightly different interface and came with Netscape Navigator 2. If you need instructions for this version of AICK, contact the ITS HelpDesk.

### Keywords

DialIP service, remote Internet access, Mac OS operating system, Apple Internet Connection Kit (AICK) version 1.2

## Why should I use the DialIP setup for Mac OS?

By following these step-by-step instructions, you can quickly and easily prepare your personal computer to connect with DialIP. ITS recommends and supports the Apple Internet Connection Kit because it comes with the necessary networking software as well as a selection of Internet client programs.

## How do I get help with the DialIP setup for Mac OS?

### ■ Printed help from the Apple Internet Connection Kit

AICK comes with a printed manual (as well as further documentation on the CD-ROM disc).

### ■ On-line help from the Apple Internet Connection Kit

AICK includes its own on-line Apple Guide on-line help for Internet connections and Internet client programs.

### ■ Personal help

See the bottom of this page for information on how to contact the ITS HelpDesk.

### Requirements (AICK 1.2)

- Macintosh, Power Macintosh, or Mac OS-compatible computer with a 68030, 68040, or PowerPC microprocessor
- Mac OS System 7.5.1 or later
- MacTCP or Open Transport (version 1.1 or later)
- 12 MB of total physical RAM (not counting virtual memory); 16 MB or more preferred
- 25 MB of free hard disk space
- CD-ROM or floppy disk drive

## How do I set up Mac OS to connect with DialIP?

The following steps require the Apple Internet Connection Kit. The Apple Internet Connection Kit is included with many recent Mac OS-compatible models, is bundled with Mac OS 7.6 upgrades, and is also sold separately. It comes with the networking software you will need to connect your Mac OS-based computer to DialIP (and other Internet service providers) as well as a selection of Internet client programs.

*Note:* The Apple Internet Connection Kit comes on CD-ROM. If you need diskettes, you will need to order them with the coupon from the AICK package. The Internet Connection Kit requires Mac OS version 7.5.1 or later. If you are using Open Transport (in System 7.5.2 or later), you will need version 1.1 or later of that networking software. It also requires 12 MB of RAM — not including virtual memory — to install.

- **Install the Apple Internet Connection Kit**

Your computer may have included a pre-installed copy of the Apple Internet Connection Kit. If so, you will see an "Internet Kit" area — which contains buttons for many important AICK components — in the Launcher control panel. If AICK is not already installed, you need to install it yourself:

1. Run the Installer program from the Apple Internet Connection Kit's CD-ROM disc. Choose the "Easy Install" option in the Installer program to place the appropriate software for DialIP on your computer's hard drive.

*Note:* Follow the installation instructions in Apple's *Getting Started* manual. You will need 12 MB or more of physical memory in your computer to install AICK version 1.2.

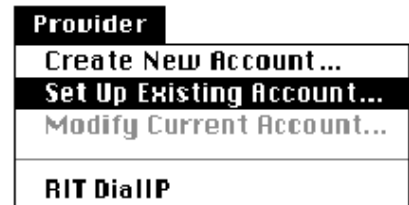
2. Restart the computer when the installation is finished. This loads the new software that was placed in your computer's System Folder.

- **Set up Mac OS with the Apple Internet Connection Kit**

Once AICK is installed, you need to set it up to connect to RIT's DialIP service. AICK puts buttons for its most-important components under the "Internet Kit" area of the Launcher control panel.

1. Launch the Apple Internet Dialer program once the computer has restarted. You can open the Internet Dialer quickly by clicking *once* on its icon in the Launcher control panel's "Internet Kit" area.
2. Select "Set Up Existing Account..." from the Internet Dialer's "Provider" menu once the program is open. A new dialog box appears; it briefly explains the process of defining a new provider.

*Note:* Do *not* choose "Create New Account..." from the "Provider" menu. This connects you to an "Internet Registration Server" that creates an account with a commercial Internet Service Provider (ISP) instead of RIT's DialIP service.



**Figure 1** Choose "Set Up Existing Account..." to use your existing DCE account for DialIP

3. Click on the "Next" button to move past the explanation screen. The "Service Provider Account Information" dialog box then prompts you to enter information about your account.
4. Type "RIT DialIP" in the "Provider Name" field of the "Service Provider Account Information" dialog box.
5. Type your DCE account username and password (see *Start: DialIP overview*) in the "User Login" and "Password" spaces, respectively. Your password is displayed as bullet characters so that others cannot read it from your computer's screen.

*Note:* Your DCE account information is case sensitive, which means it matters whether you type uppercase or lowercase letters. Use all lowercase letters when entering your username. Use all lowercase letters when typing your password, unless you have changed your DCE password and know it includes uppercase letters. You must use your DCE account; your OpenVMS account will *not* work.

6. Enter the DialIP service's phone number in the "Provider Phone Number" field:
  - "427-2000" (with no area code) if you are calling from off-campus and are inside the 716 area code
  - "716-427-2000" if you are calling from off-campus but are outside of the 716 area code
  - "9-427-2000" if you are calling from on-campus — including RIT offices, residence hall rooms, and apartments

*Note:* The DialIP service formerly used 716-756-4100. That number is no longer in service.

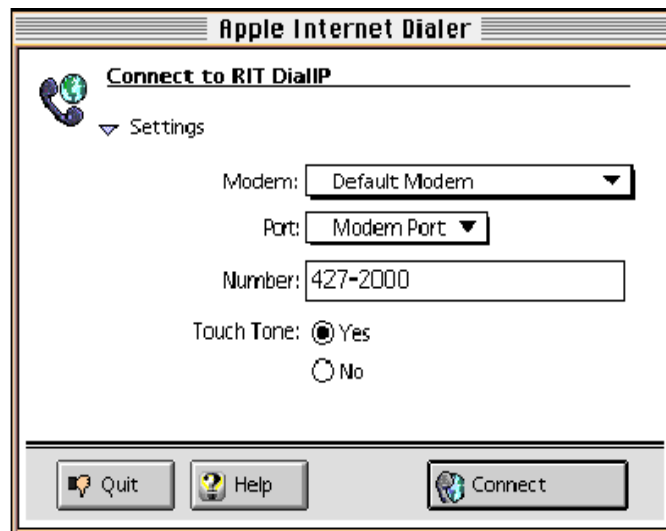
*Note:* If you are calling from an RIT office or residence hall room, call the ITS HelpDesk for Ethernet LAN networking options that do not use your telephone line. If DialIP's 716-427-2000 telephone number is a long-distance call, you might want to consider finding an Internet service provider with an access number in your local calling area.

7. Enter your electronic mail (email) password in the "E-mail Password" field. This sets up the Kit's email programs so that you can download, or retrieve, email from one of your RIT computer accounts. Your email password is the the password for your:
  - OpenVMS account if you get your email from the OpenVMS systems
  - DCE account if you get your email from ITS' Digital UNIX systems (e.g., "Grace").
8. Click on the "Next" button to move on to the "Server Information" step.
9. Fill in the fields of the "Server Information" dialog box. When entering the email information (SMTP host, POP server, and email return address), you must match the system (either OpenVMS or Digital UNIX) with the password you entered in step 7 (either OpenVMS or Digital UNIX; see step 7 above and Table 1 below).

Server information	Address	
	For OpenVMS systems	For Digital UNIX systems
NNTP host	nntp.isc.rit.edu	same
SMTP host	vmmail.isc.rit.edu	osfmail.isc.rit.edu
POP server	vmstpop.isc.rit.edu	osfpop.isc.rit.edu
Email (return) address	abc1234@rit.edu	abc1234@osfmail.isc.rit.edu
Domain name	rit.edu	same
Primary nameserver (DNS)	129.21.3.17	same
Secondary nameserver (DNS)	129.21.3.18	same

*Table 1 You must enter addresses for some of RIT's servers before you take advantage of the Internet.*

10. Click on the "Next" button to move to the final "Connection Script" step.
11. Leave all of the fields in the "Connection Script" dialog box empty and click on the "OK" button to complete the setup process. The DialIP service does not use a connection script. Once you have clicked "OK," you are returned to the Apple Internet Dialer's main window, which has changed to reflect the new "RIT DialIP" provider definition (see Figure 2).



**Figure 2** When the setup process is complete, you return to the Internet Dialer's main window. It is ready to connect with the new provider, "RIT DialIP," that you defined.

## How do I connect to DialIP with Mac OS?

Now that your Mac OS-based computer is set up for the Apple Internet Connection Kit, you can connect to RIT's DialIP service.

- **Select the RIT DialIP provider definition**

Before you connect, you must select the RIT DialIP provider definition. If it was the last provider you used, then it remains active and you do not need to reselect it. The Internet Dialer lets you store and use settings for many different providers.

*Note:* If you just created the RIT DialIP provider definition, you do not need to select it. The Apple Internet Dialer keeps the last provider definition active, even if you quit and then re-launch the program.

1. Open the Apple Internet Dialer.
2. Choose "RIT DialIP" from the "Provider" menu.

- **Open a DialIP connection**

Click on the "Connect" button in the "Connect to RIT DialIP" window. This starts your DialIP session. The Apple Internet Connection Kit software searches for your modem, calls the DialIP service's phone number, and negotiates a connection. If the DialIP service is busy, the Dialer will automatically redial up to ten times.



**Figure 3** *When you connect, the Apple Internet Status program displays this "Internet Connection Status" window.*

Once the connection is made, the Apple Internet Dialer quits (see Figure 4 on page 4 to change this preference) and the Apple Internet Status program launches (see Figure 3). This new program provides a small window which tells you whether or not you are connected, shows how long you have been connected, and gives you a button to "Hang Up" your modem. The "Hang Up" button changes to "Connect" when you disconnect from DialIP.

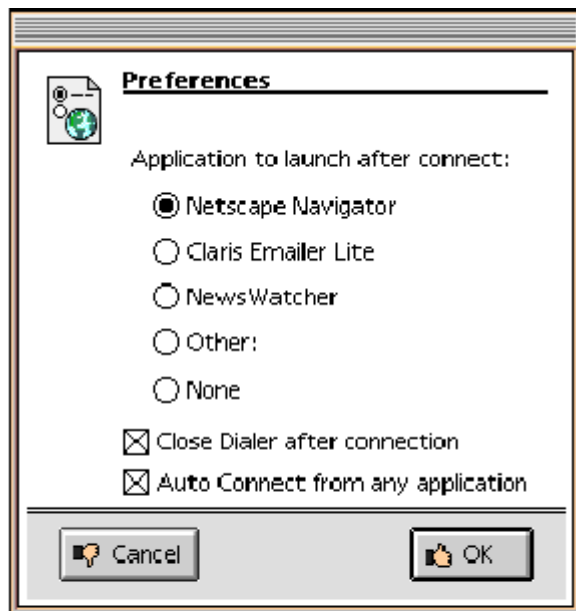
Preference options in the Apple Internet Dialer program also let you choose an Internet client program to launch after you have successfully connected (see Figure 4).

- **Open Internet client programs**

The Apple Internet Connection Kit installs several Internet client programs on your computer's hard disk. These clients allow you to use the Internet connection that DialIP provides.

The "Preferences" window in the Apple Internet Dialer lets you automatically open an Internet client program when you make a DialIP connection (see Figure 4). You should also see icons for various Internet clients in the "Internet Kit" panel of your Launcher control panel.

Launch an Internet client program, such as Netscape Navigator, by single clicking on its icon in the "Internet Kit" pane of the Launcher. The Internet client opens and lets you use your DialIP connection to send and receive information from the Internet. You can have more than one client open at a time, depending on the amount of memory installed in your computer. Refer to the Apple Internet Connection Kit's on-line documentation for more details, especially if you have questions about a specific Internet client program.



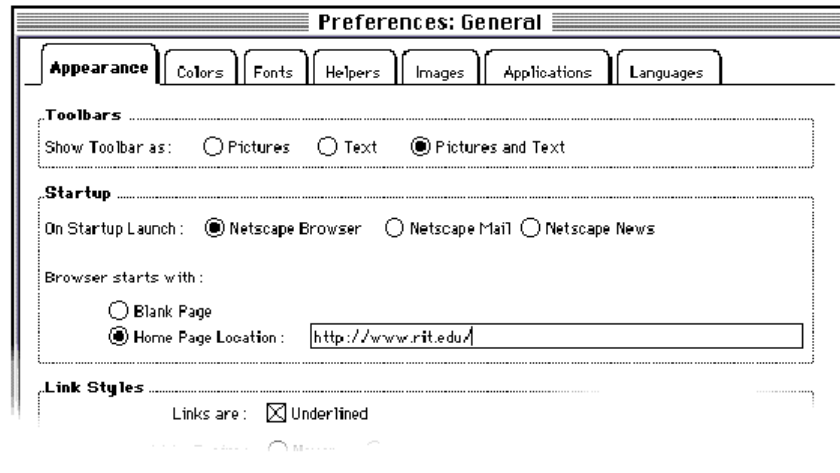
**Figure 4** *Choose an Internet client program to launch after you connect to DialIP and arrange to automatically quit the Dialer program after you connect.*

*Note:* Launching an Internet client program before starting a DialIP connection will begin a new link. However, *it is more reliable* to open a DialIP connection *before* launching any client programs.

By default, the included copy of Netscape Navigator opens to the World Wide Web site Apple created for users of the Internet Connection Kit. It is at: <http://aick.apple.com/>

You can go to RIT's Web site by changing to the text in the "Location" field in Navigator's main window to the following address: <http://www.rit.edu/>

To change the default Web page Netscape Navigator displays, go to the "Options" menu and select "General Preferences." When the "General Preferences" dialog box opens, click on the "Appearance" tab. In the "Home Page Location" field, type the address of the new default Web page (or click on the "Blank Page" option). Click on the "OK" button to close the dialog box.



**Figure 5** The "Appearance" tab in Netscape Navigator's "Preferences: General" dialog box lets you change the default home page that appears when you launch the program.

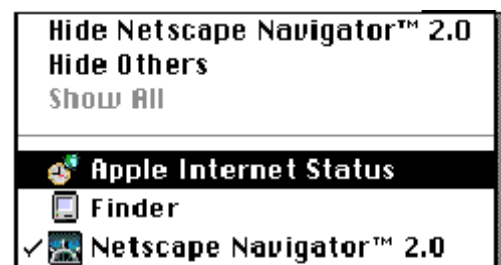
- **Close a DialIP connection**

Once you are done with your work on DialIP, you must close your connection. The Apple Internet Status program lets you do this.

1. Launch the Apple Internet Status program (or if it is running, select it from the Application menu at the right side of your menu bar; see Figure 6).
2. Click on the "Hang Up" button in the Apple Internet Status program's "Internet Connection Status" window (see Figure 3 on page 4).

You can quit any running Internet client programs either before or after you disconnect from DialIP.

The Apple Internet Status program keeps track of how long you stay connected. Once you disconnect, its time indicator stops. The "Hang Up" button also changes to read "Dial Phone," allowing you to easily reconnect to DialIP (see Figure 3 on page 4). When you reconnect, the time indicator starts counting from zero.



**Figure 6** If the Apple Internet Status program is running, you can make it active by selecting it from the Application menu.