

OSHER Lifelong Learning Institute at RIT

where curious minds gather

OSHER
LIFELONG
LEARNING
INSTITUTE



A Ya VYf'6YbYéhg; i]XY



<ck hc; Yh\YA cghZfca noi f
Cg\Yf'A Ya VYfg\jd

R·I·T

TABLE OF CONTENTS

Table of Contents	3
Course Leadership Opportunities	
Course Leadership Opportunities	3
Expanded Learning Opportunities	4
Osher Gallery	5
Osher Library	5
Pfaudler Lecture Series	6
Social Events	6
Registration and Enrollment	
Parking Permit for the RIT Campus	8
Osher and RIT Liberal Arts Courses	9
Procedure for members to register for a course at RIT	9
Wallace Library	9-11
Gordon Field House and Activities Center	12-13
Student Alumni Union	13-14
Calendar of Events	15
Barnes & Noble @ RIT	15
Computer Access Accounts	16
Other Resources	
Osher Organizational Chart	18
Governance of Osher	19
RIT Campus Map	20-21

INTRODUCTION

Welcome to the Osher Lifelong Learning Institute at RIT. This is the opportunity to participate in the enriching and enjoyable courses offered by our members and the camaraderie among regular Osher membership that will add richness to the Osher experience. This booklet is meant to help members access those courses. If you have any questions, please ask a fellow member, the volunteer at the reception desk or a staff member.

CONTACT INFORMATION

CONTACT INFORMATION

One of the perks of membership is the chance to lead a course. Past and present course leaders say leading a course at Osher is a wonderful and rewarding experience. One learns more about a subject when one teaches it to others and class participants are energetic, curious and have lots of life experience to bring to the discussion.

The courses lend themselves to many teaching formats. In addition to lecture and discussion, possibilities also include peer group seminars and one session courses. In peer group seminar classes members share leadership responsibilities. One-session courses are a great way to try one's wings if teaching is a new adventure.

New course leaders should have a Regular membership in Osher. If you are a member and have an idea for a course, no matter how tentative, a member of our Course Offerings Committee would be glad to discuss the idea with him/her.

Summer Seminar - In addition to the academic courses offered in the summer, the Summer Seminar Program provides opportunities for Osher members to explore and enjoy the many cultural, historic, and scenic sites in the Rochester area. The program is designed to provide a unique and enriching experience for Osher members. The program is open to all Osher members and is a great way to spend your summer.

The Summer Seminar Committee is a group of Osher members who plan and coordinate the program. The program is designed to provide a unique and enriching experience for Osher members. The program is open to all Osher members and is a great way to spend your summer. Fees for summer seminars cover bus transportation, admissions, and other expenses. The program is a great way to spend your summer and enjoy the many cultural, historic, and scenic sites in the Rochester area.

Members of the Summer Seminar Committee are responsible for planning and coordinating the program. The program is designed to provide a unique and enriching experience for Osher members. The program is open to all Osher members and is a great way to spend your summer.

Interession - Interession programs are visits to sites of local interest in the Rochester area and on the RIT campus. Members of the program are responsible for planning and coordinating the program. The program is designed to provide a unique and enriching experience for Osher members. The program is open to all Osher members and is a great way to spend your summer. Previous events have included visits to an RPO rehearsal session, a backstage tour of GEVA, a tour of the Strong Museum of Play and a tour of several ethnic markets in the Rochester area.

Travel - Trips usually involve traveling to sites and events that include both entertainment and educational components. Hotel and travel costs are paid for by each member. In the past, members have traveled to various locations in the United States and abroad. Previous events have included a 3-day boat trip on the Erie Canal in Pennsylvania and a 3-day boat trip on the Erie Canal.

Members of the Summer Seminar Committee are responsible for planning and coordinating the program. The program is designed to provide a unique and enriching experience for Osher members. The program is open to all Osher members and is a great way to spend your summer. Sign-up sheets for the program are available on the bulletin board. The program is a great way to spend your summer and enjoy the many cultural, historic, and scenic sites in the Rochester area.

Osher members are also able to participate in RIT sponsored alumni travel programs. Access to information about the program is available at www.RITTravelClub.com.

RIT STUDENT IDENTIFICATION CARD

RIT STUDENT IDENTIFICATION CARD

In order to participate in on-campus courses, events, activities and to have access to the Gordon Field House and Activities Center you must be registered as a Regular (full-year) student. To receive a card you must be registered as a Regular (full-year) student. You must be registered as a Regular (full-year) student. You must be registered as a Regular (full-year) student.

1. To receive a card you must be registered as a Regular (full-year) student. You must be registered as a Regular (full-year) student. You must be registered as a Regular (full-year) student.

2. You must be registered as a Regular (full-year) student. You must be registered as a Regular (full-year) student. You must be registered as a Regular (full-year) student.

3. You must be registered as a Regular (full-year) student. You must be registered as a Regular (full-year) student. You must be registered as a Regular (full-year) student.

4. You must be registered as a Regular (full-year) student. You must be registered as a Regular (full-year) student. You must be registered as a Regular (full-year) student.

HINT #1: You must be registered as a Regular (full-year) student. You must be registered as a Regular (full-year) student.

HINT #2: You must be registered as a Regular (full-year) student. You must be registered as a Regular (full-year) student.

D5F?B; D9FA #H CFH9F#H75AD G

Ç Ú V ' @D YÁ¶Úæ¶² ¶%gzm á: j i pí ' È

1. † ² æÚæz '='@gO- Åi Ý¶² : ¶-] ½ Úö %¶- ; z%æ¶² '='¶Oq 'O² q' get a parking pass at the Information Booth.

2. Ask the attendant for directions to Parking Lot C and Grace Watson Hall (#25 on campus map).

3. When you get to the area, instead of entering Lot C immediately, drive up to Grace Watson Hall (GWH). On the right hand side of the parking area in front of GWH, there are 20-minute parking spaces.

J¶i ' - i ÝæOöz 'æz gÚÝz - zÚ z²g¶OYœ " ' @ œ¶² ÈÇ%æz Ú ' Ú ' ²¶'OöO¶] @ YÁOgz Ýnz² æÚ¶afíÈÈ ¶²¶æÁÚ ' È 'æz 'Ýz g¶² Ýö œé Ýç ²Ýç qçOæ " Úz Ýz Úz qOÈ

4. † ² æÚ%H & 'O² q 'ö Oö ¶æz ¶æz Úz² q ¶%æz] i ¶œ " È ² ' ¶öz Úz Oq Ýç ² ö œœ qçOæ Ö Ú ' È " 'O² q @D YÁ¶Úæ¶² Ö¶%gzm È@ Ú ' @%O² q 'z² æÚæz ¶%gzm & ¶i Ým€O- ¶æ' Å- È

5. ; ÚÝz² æ¶i Ú='@>æqz² æ½ 'O² q 'ç qçOæ æœæ¶i 'ö ¶i ¶'ç z ¶¶ ¶] æ¶ 'OÁÚ 'È " ÅzÚ- œç¶i 'È æ² q ¶i Ýz æ¶ gÚÝnoY' ¶ææ¶ ' Ýæj z ÚÝÈJ¶i 'ö œœ¶- Åœæ 'O² OÁÁ çOæ¶² ¶Ú- ÝÈJ¶i ' - œ] z 'OY' z q' ¶Ú¶i Úç² Ýç 'O² q gÚÚz " ¶æOæ¶² ÈJ¶i 'ö œœ z z q ¶i Ýi ÅÁœæ ' Åœæ ²i -] z ÚÝEO² q - O' z ā- ¶qz ¶%æz gÚÝÈJ¶i ÚÁzÚ- œÈÈœ z ' issued immediately.

6. Before you leave be sure to ask for a list of the parking lots and rules for parking.

Where to park: ; zÚ- œæ¶'3 >¶ '='- z-] zÚÝÚz ¶ÚÖg¶- - i æÚ ÁÚ 'È " ÈO; Ú 'È " ¶²¶æÁzÚ- œœ q 'È 'O² Úz O¶%œ¶æœz Úz 'æz Úz Úz 'Úz Ýz Úz qOYç ² Ýœœ¶Ýz Úz Ýæg¶² ÝÚz " z² zÚOœ 'È ¶Úz %¶- 5am to 5pm, Monday through Friday. Complete parking rules can] z 'Úöçö z q 'œö ööÈÚz qi æÁÚ 'È " æœÝzœn¶² z - œO¶¶ ' Ogz Ýg¶Áç Ý¶%æz ¶Ú- Ý² z z q 'O² q öçö - OÁY¶%æz gO- Åi ÝÈ

Some Highlights Include:

Basic Services: Over 450,000 books and journals; popular movies
the item(s). At the circulation desk and other places throughout the library, there are a number of brochures that help one learn about
the item(s). At the circulation desk and other places throughout the library, there are a number of brochures that help one learn about

Idea Factory: ...
the item(s). At the circulation desk and other places throughout the library, there are a number of brochures that help one learn about

Leisure Collection: ...
books, and periodicals for in-library use.

Computers: ...
not have a computer access account (pg. 16), you can obtain a

Re-Search Zone: ...
project.

Cary Collection: The Cary Graphic Arts Collection is a unique library on printing history. It includes resources on book-making, typography, calligraphy and graphic arts processes.

RIT Archives and Special Collections: This collection contains
– a portfolio of original Yosemite photographs by Ansel Adams.

Publishing and Scholarship Support Center (PSSC): The PSSC,
stop service for advice and assistance in preparing research, articles,
books and other documents for publication.

Business & Entrepreneurship Resources Area (BERA): Located
online.

Java Wally's Café:

Library Web Page:

book sellers in the Rochester area.

CF8CB: 908<CI 095B8'57HJ #H9G79BHF
 (Building #24 on campus map)

=z" i 0U3 >&t ='- z-] zYocAnO' ='@>æqz²æL gOú O' q' O' Qqq 00² O%z' a' ='@00ö ' 0UÁ0ú0Á00² 'æ' æz '000æY'0æz' Gordon Field House and Activities Center (GFH&AC) and includes æz '000ö 0" m

1. O i 00; i UÁYz' U²O- includes indoor tennis courts and an 0q00Uí 00- zæUá0g' 0Uö 000" 0U0" " 0" E

2. Wiedman Fitness Center - Oæ 0 YáUú 0000ö 0000Uú i Yö z 0 æ - 000 z Yn%æz' ö z 0 æ' O' q' gOú 000Ygi 0Uz i i Á- z²æ² Qqq 00² O%æLú 'Yæz' 0ÁzU'0æ0æ zUÁU" U- E 'æz' 0000g'0Y' 000² ' 0g0qzY'0SæzY'0' q' 2' i á00² 000YzY' - z²æ\$0U'0² " 00" ' 0q00i 00 á00 0" ' YzY'0² Yæ00ú z' a' - z zæ' q' 00i 00SæzY' " 000n0%z' applies.

3. , i qY'0æ&00' i i 000Yfiz²æU- includes a 25-meter, eight-lane Yö 0 - 0" Á0000' q' 0Uz gU' 00² Á0000

4. fi 0U' %0- 2O'0 - - basketball, badminton and tennis courts available for use (basketballs, badminton equipment and tennis racquets and tennis balls can be signed out for use). A number of racquetball courts are available but personal equipment must be used.

5. \$U0'' =ææU'gz' U²O- offers recreational ice-skating. It is also the home for RIT ice hockey and the Genesee Figure Skating Club.

6. "2" 000q' ö z 0æz U'æz U' 0U' outdoor tennis courts and a 400-meter 00i æ000Uá0g'.

To participate in any of the aforementioned activities, one must go to the Student Activities Center (SAC) located in the Student Union Building. The SAC is a central hub for all student activities and events. It provides a space for students to engage in various recreational and cultural activities. The SAC also serves as a meeting place for student organizations and clubs. The SAC is open to all students and is a great place to spend your free time. The SAC is a great place to meet new friends and get involved in campus life. The SAC is a great place to learn about the latest events and activities on campus. The SAC is a great place to get help with any questions or concerns you may have. The SAC is a great place to have fun and enjoy your college experience.

The Activities Center also is a place for entertainment, theatre, concerts, lectures and other events. Tickets for all events may be purchased at the Gordon Field House & Activities Center Box 3. Tickets for events at the GFH&AC pay the regular prices charged to the public at large.

For more information, contact the Student Activities Center at (508) 548-2222 or visit our website at www.rit.edu/sac.

STUDENT ALUMNI UNION

The Student Alumni Union (SAU) is a central hub for all student activities and events. It provides a space for students to engage in various recreational and cultural activities. The SAU also serves as a meeting place for student organizations and clubs. The SAU is open to all students and is a great place to spend your free time. The SAU is a great place to meet new friends and get involved in campus life. The SAU is a great place to learn about the latest events and activities on campus. The SAU is a great place to get help with any questions or concerns you may have. The SAU is a great place to have fun and enjoy your college experience.

If you need a pick-me-up or just a break in the day, step into the Student Union Building. The entrance to the cafeteria is past a number of shops

QigOaeq 'E 'aez 'Q]] o'Qz 'aez 'fiO' qo'fi'qi 2 aeUO' q / z 2 'O' q , z UoX' 'gz ' fiUz O- E'oez 'gO%aeUO' q' %W' o'f'ae' q' g'f'Q - z O'f'niYO' qo' g'oz 'YnY'2 O'g' 'Yn hot and cold drinks, etc.

Artesano Bakery & Café 'Y' O'O' zö 'Yo'f'ö gO'Yz '] O' z UöO'ö oz Uz 'f'2 z ' can enjoy fresh tortes, pastries, desserts, organic rolls, breads and] O' z 'Yn- i ' %3 'YnO' q ' 'Y'g'f'2 z 'Y'ö 'aez ' z z 'ae' g'f' %z 'n'ae' On'f' Uz 'YÄ'z 'Y'f'ni ' %f'uz 2 '] '2 qz q 'q'U' ' 'Yn'f'U'aez ' z 'öz' U' %ö'f'f' U'ae' g'OÄ'i' gg' 'f'ngO% : 'O'ae'ni gO% - 'f'g'oe' 'f'f'oe'f'ag'oe'f'g'f' O'ae' E

Digital Den 'Y' = ' @ 'X' z ' @ g'ae'f'2 q 'Y'f'Uz ' 'Q'gOaeq 'f'2 'aez 'S'U'ae'f'f'U'f'f' % the SAU. It has photography and computer merchandise for YÖZ'É'z 'Äz 2 q'É " 'f'2 'aez 'ae- 'Y'] 'f'f' " oae'q'f'g'f'f' 2 'ae' Uz ' O'ae' O'Y'ae 'p'É n'Äz' U'oe'ÄY - 'f'f'z' n'z'Y'Äz' g'O'ö' ö' o'z 2 'ae- 'Y' i ' O' %ö' %f'U' %ö'Y'aeqz 2 'ae q'f'g'f'f' 2 'ae' \$'f'f'Uz 'O- Ä'ng'oez' g' 'aez 'g'f'f' - Ä'i' ae'U'f'f' %ö' Uz 'É'oez' Uz ' - O'f' be some surprises in that department for Osher members (be sure af' 'oez' o'f'f'i' U' >aeqz 2 'ae' g'U'q' O' q ' >aeqz 2 'ae' 2'i -] z Uö 'ae'f'f'f'f' E

The RITz Sports ZonenO'Y- O'Q'U'gO%aeU'On'Y'f'2 'aez 'Q'ö z U'ö'öz 'Q'f' % the SAU. It is also the home to the Game Room and ESPN Sports fiz 2 'ae' Uz ' z 'Y' É'2 'aez ' %O- z ' = 'f'f'f' - n'Ä' O'f' O'ö'Uz 'ae'f'f' %qz'f'f' O' q 'Ä'É] O' games, darts, pool, foosball and air hockey. At the ESPN Sports É z 'Y' n'f'f'f' 'g' O' Äz' U'f'f'f' - O' f' > ; 1 '2 z 'ö'Y'] 'f'f'q'g' O'Y'ae' O'Y' g'f'f'z ' af' the real thing as you can get! To learn more about the Zone, go to ae' = ' @ 'f'f' - z Ä' O' z n'Ä'i' ae' O'Ä'f'f'f'f'f' z O'É 'aez 'Yz' U'g'oe'] 'f'f' O' q ' Uz' O'q ' O' about it!

The Ingle Auditorium is also housed in the SAU. It seats about < p'p'Äz'f'f'Ä' @ 'f'f'U'aez' O'ae'g'O'q' - i 'Y'g'O'z' öz 2 'ae' O'Y'ö z ' @ 'Y' - 'f'f'ö'É'Y' O' q ' lectures. **Bytes On The Run** O'g'f'2 öz 2 'Q'2 g'z 'Y'f'Uz 'f'2 'aez 'S'U'ae'f'f'U'f'f' % the SAU, is the place to purchase tickets for any event at the Ingle. / z 'Y' Uz ' af' 'oez' o'f'f'i' U' = ' @ ' >aeqz 2 'ae' g'U'q' O' q ' O'Y' ' %f'U'Y'aeqz 2 'ae' O'ae'Y'f'f'

Check the SAU throughout the year as student groups offer sales and special events throughout the year. The School of American f'f'U'ae' - O' 'oe' 'oe' 'ae' 'ae' 'ae' U'Y'aeqz 2 'ae' ö'f'f'U' ö'ae' O'Ä'f'f'Ä'i' O'U'oe'f'f'ö z 'O'g'oe holiday season.

Parking spots may be at a premium during the day but there are a Yz'öz' U'ö'oe'z' O'ae'z' Yn'f'f'ae' É n'Brif 'V' \$É

F#H7CAD H#F '5779GG577CI BHG

3 2 gz 'O'=z" i 'O'U'G%Q'oz QU'É3 Ýoz Ú- z-] z Úo'Y'Q' '='@>æqz 2 æk card, the member is entitled to secure an RIT computer access. Ogg'li 2 æ'æ'Y' Ogg'li 2 æ'æ'Q'Q'ö 'æz' - z-] z Úa'Ú' " Ýæ Úo'æ'æz Ú 'Q' 2 'Áz Ú'Q'2 O'gg' - Ái æ Úa'Ú' O'ggz Ý'æz '2 æ'z z æ'Q'æz '='@1 z æ ö 'Q'Ú' 'æ'æz 'g'Q'Y'Ú'Q' - Ý'Q'æ3 Ýoz Ú'Q'Ú'Q'2 'gO- Ái ÝÉ

The steps to obtaining a computer access account are as follows:

1. 3] æ'æ' 'Q' '='@>æqz 2 æk 'g'Q'Ú' 'Ý'z z 'ÁO' z 'á'Q' 'Q'öz ÉÉ
2. 1 z 'æ'æ'Y' 'Q'ææz '3 Ýoz Ú'Q'2 'g'z 'Q'Ú'æz 'fi'Q' - Ái æ Ú 'ggz Ý' Account form. Complete the form and obtain the Program k 'Ú' g'Q'Ú' 'Y'æ' 2 'Q'æ'Ú' É
3. Bring the completed, signed form to the ITS (Instructional @g'æ' 'Q'Q' 'æ' z 'Ú'Q'z ÝÉ&z 'Á'k z 'Y' 'Q'g'Q'æ'q' 'Q'2 'æz' 'S'Ú'æ'Q'Q'Ú'Q'æz ' %Q'2 z æ'æ' i 'Q'æ' " 'Q' / ÉÉ 2 æ'Ú'æz] i 'Q'æ' "] 'æz' 'i' Q'z 2 æ'Q'z n' 'Q'Á'Á'Q'Y'æz 'æz' . 'Q' z 'Ú'Q' 'Ú'æ' / i 'Q'æ' " n'ö Q'Q' 'ÁO'Y'ææz 'q' 'Á'Q'Q'g'O'Y'z ' 'Q'2 'æz' 'Ú' ææ - O' z 'O'Ú' ææ'Ú' æ'æz 'æ' &z 'Á'k z 'Y' 'g'li 2 æ'Ú'æz ' Á'Q'Q'z '2' i -] z 'Ú'Q' 'æ' 'á' 'á' 'á' 'é' 'á'É

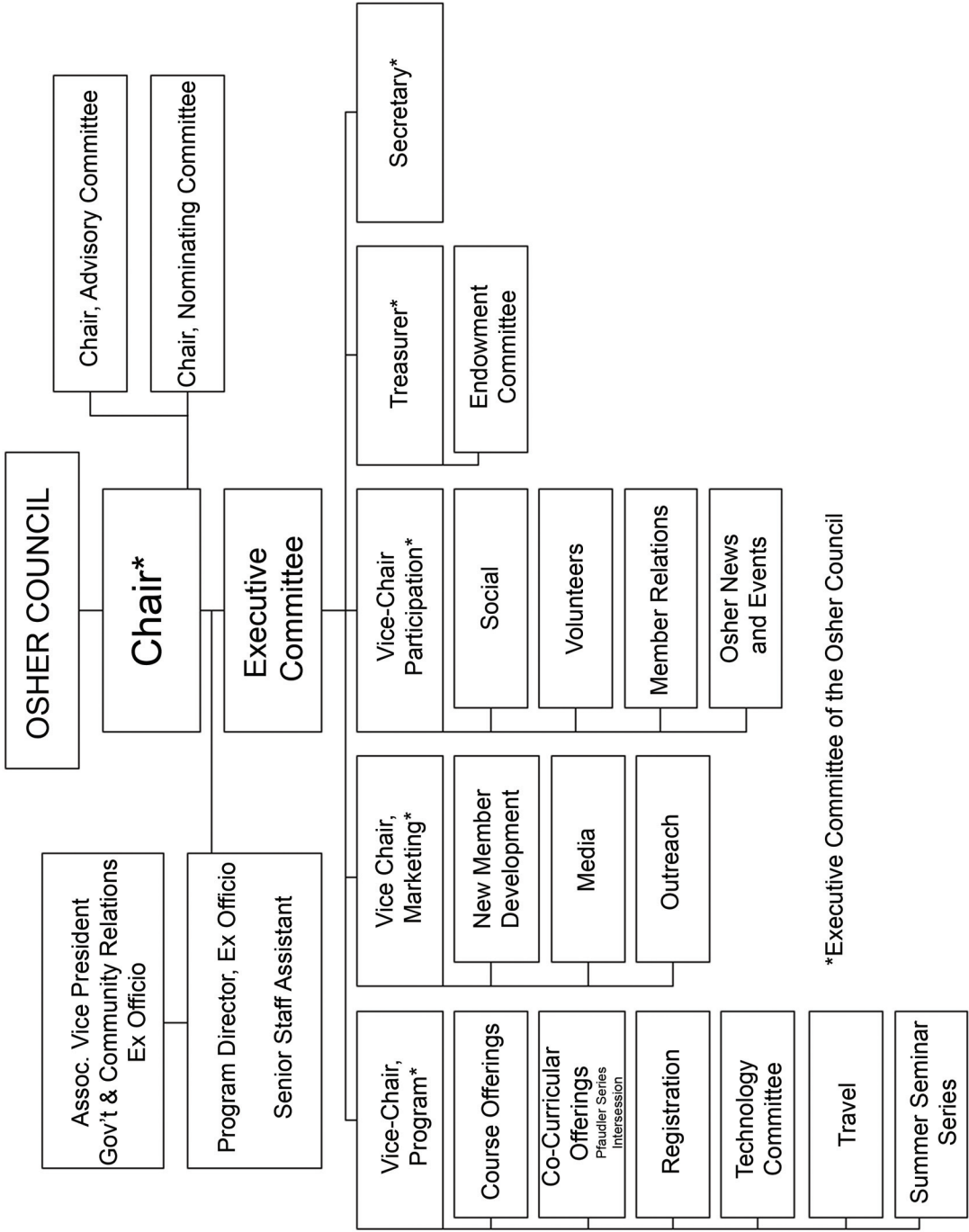
'i' Ýz Ú2 O- z 'Q'q' 'ÁO'Y'ö 'Q'Ú' 'ö' 'Q' z 'Ý'Y' z q' Q'q'æz 'g'Q' - Ái æ Ú O'ggz Ý' O'gg'li 2 æ'æ'Q' z 'Q'ö'Q'Q' 'Q' 'æ' - z q' Q'æ'Q' 'Q'Ú' 'Yz É < i z 'Yæ'Q' 'Y' 'Q'Ú'æz 'Á'Ú' i z 'Yæ' - Q'] z 'Y'] - ææ'q' 'Q'æz 'ö z] 'Q'æ ö ö 'Q'Ú'æz 'q' 'æ'æz 'Á'Q'Q'Ú'Q'z - Q'Q'ææz 'Á'qz 'Y' ['Ú'æz 'q' i É

'- z-] z 'Ú'Q' 'æ'æ'Q'g'Q' - Ái æ Ú O'ggz Ý' O'gg'li 2 æ- Q'Ú' " Ýæ ÚO laptop that can be used at Osher and on campus once prop- z 'Ú'Ú' " Ýæ Úz q'É' 'Q'Ú' " Ýæ Ú' " 'Q' 'æ'æ'Y'æ'æ'Q'Ú'æz 'q' i É 3 2 'æz 'Q'æ' 2 qz Ú'g'Q' - Ái æ Ú 'Yz 'Ú'Q'z 'Y' 'Q'Ú' " Ýæ Ú'g'Q' - Ái æ Ú 'O'fi'Q' 'Q'q' 'g'Q' - Á'Q'æz 'æz 'Q'Ú' 'ö' 'æææz 'i' Ýz Ú2 O- z 'Q'q' 'ÁO'Y'ö 'Q'Ú' 'Q'q' 'Q'æ'Q'ö the directions.

51 8-00; MGRJ 79G

ö qz 'Ü" z '¶%z Übz ÝÁÜöqzq] øæz '1 @É 'Ü Öad'2 Öæ goé ÜÖ©
'2 Yæææ ¶Üææ É z Ö%fi ¶ – – i '2 ÜÖad'2 'Ö q > z Übz ÝÉ z ÁÜæ z '2 æ
including hearing tests, hearing aid checks, consultations and
æz ÜÉ" 'Öq z ÖÖÖ Öad'2 YÉææ '='@ > æqz '2 æÉ 'gÜü 'Ö q '='@ > æqz '2 æ
'É '2 i –] z ÜÜz '2 z z qz q' æ' æ' z 'Öq ÖÖ æ' z '¶%ææ Ýz 'Ü q ¶¶" ÜÖ©
services at RIT. At the Hearing Aid Shop, audiologists are available
¶ÜÝz öz ÜÖad'2 Ü'z Ögöö z z " q Ö'qi ÜÉ" 'ææ 'Ög Öz – Ü'z ÜÜ
Çz Áæ –] z Üæüji " æÖ ÖÉæ 'Ö Yö z ÜÜ i z Yæ'2 YÉææ ' Yæ%Öæææ '
Hearing Aid Shop can schedule appointments, make and modify
ear molds, sell batteries, testers, assistive devices and accessories,
and many other services.

ææ 'fi ¶ – – i '2 ÜÖad'2 'Ö q > z Übz ÝÉ z ÁÜæ z '2 æ' ¶g Öæq 'ææ '
. ø q'2 / Öæ z Ý, ¶öæ Y'2 Ç/, É' i Öæ " Ç' i Öæ " µ' äp' ¶' ææ 'gÖ- Äi Ý
map). Either parking lots L or M is a convenient place to park for the
. /, /' i Öæ " Éææ & z ÜÉ" ' ' Ç' > æ' Á Ç á ç jâ' æèÉæ – z ÁÖ' z 'gÖ'] z '
Üg z Ýz q'] ø" ¶É" æ' ö ö ö É æ' ÜÉz qi næ Äz 'æ 'Öæ ÜÉ" 'Öq Yæ' ÁÖ'
in the RIT search box and click on the appropriate listing. On the
æz ÜÉ" 'Öq Yæ' Á öz] ÁÖ' z Üz 'æ ' Yæ' ÁÜ¶%Ýq'2 ÖÖM ¶g Öad'2 Y'
öæz Ü' Öq q'2 Öææ ¶Ü- Öad'2 ¶'2 æz ÜÉ" ' ¶Ý – Ö'] z '¶'2 qÉ



*Executive Committee of the Osher Council

