

# Welcome

to the

# 2007

# PRINCIPAL

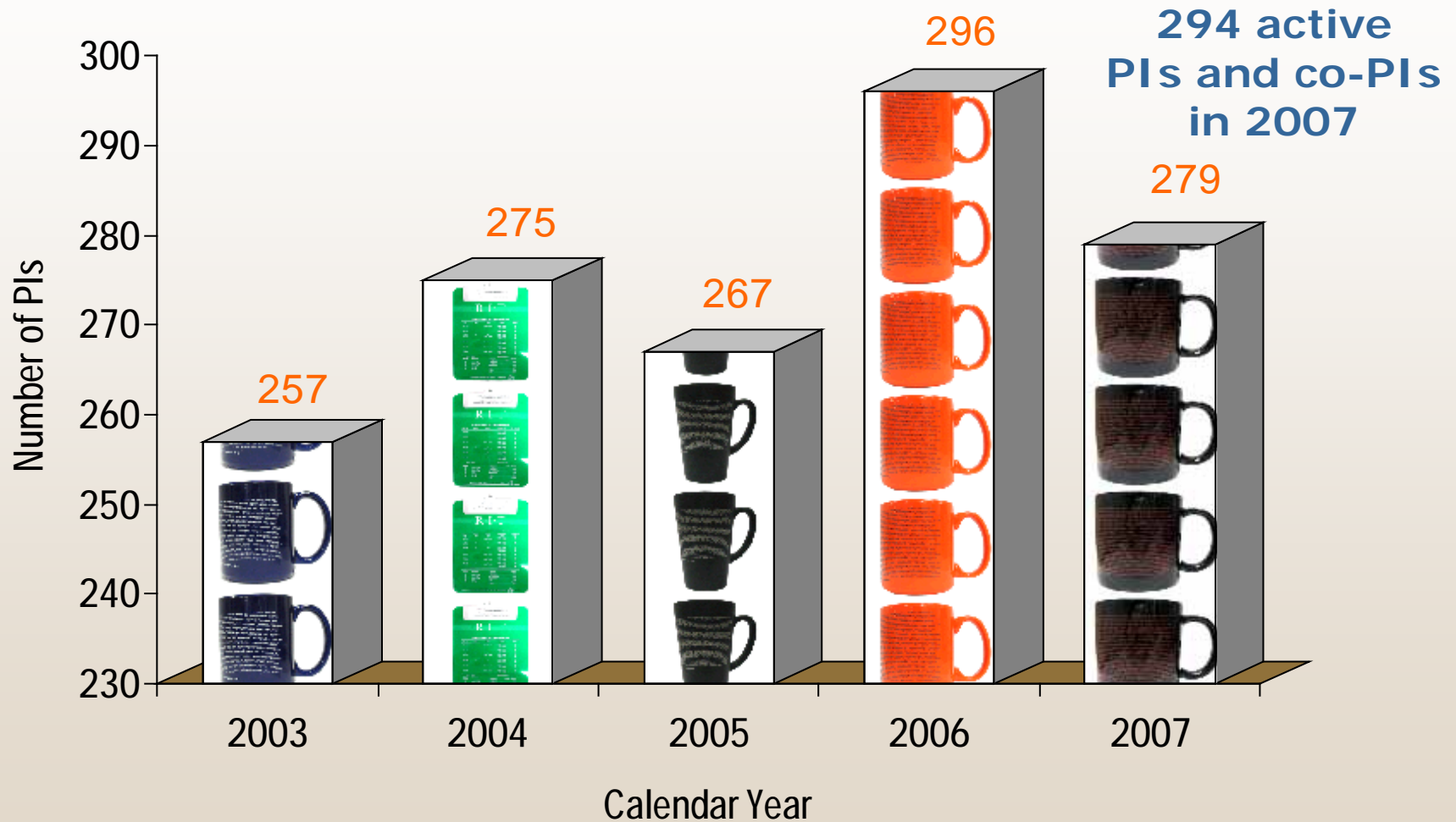
# INVESTIGATORS'

# RECEPTION

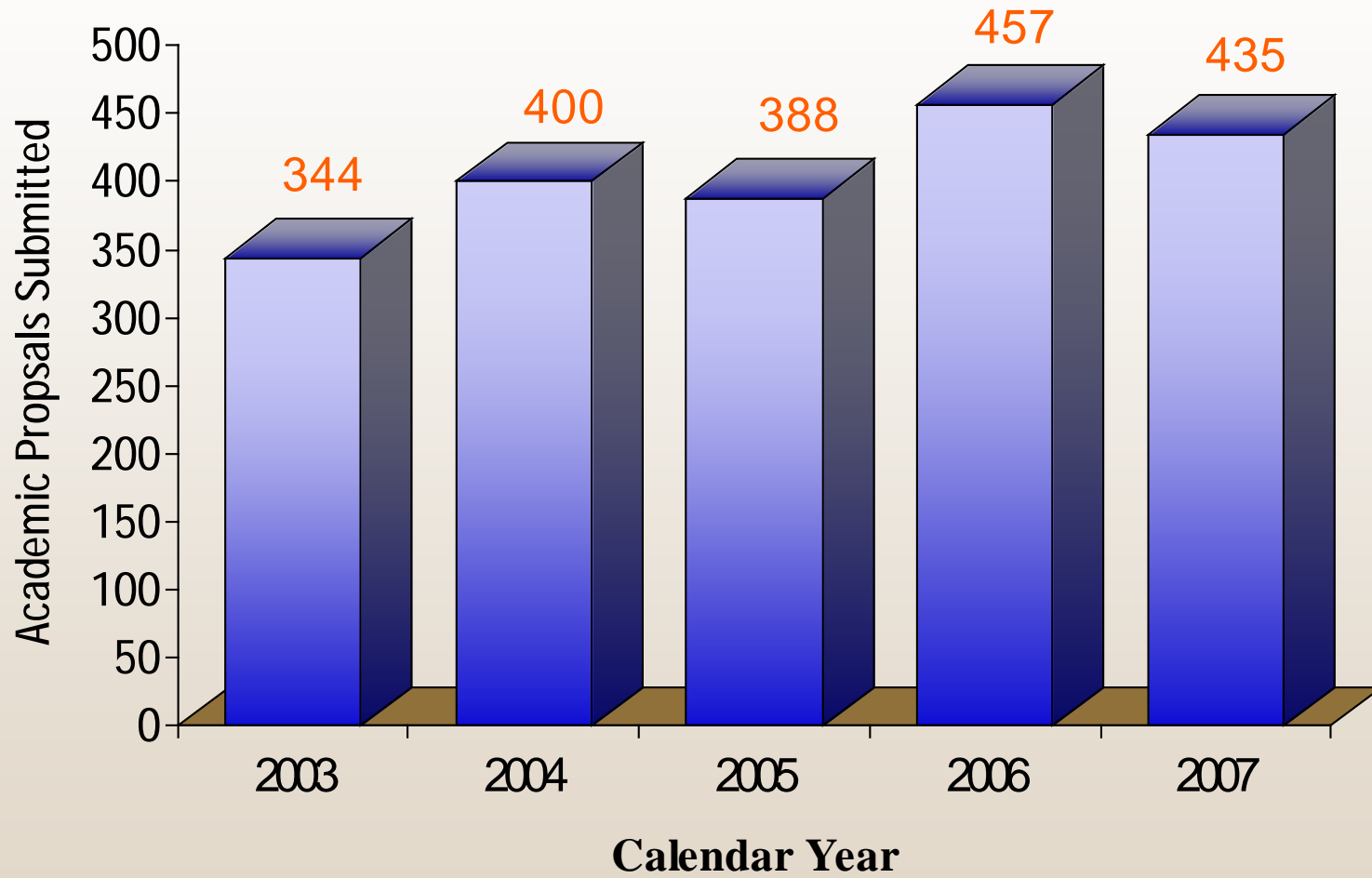
February 21, 2008

*Presented by the Office of Sponsored Research Services*

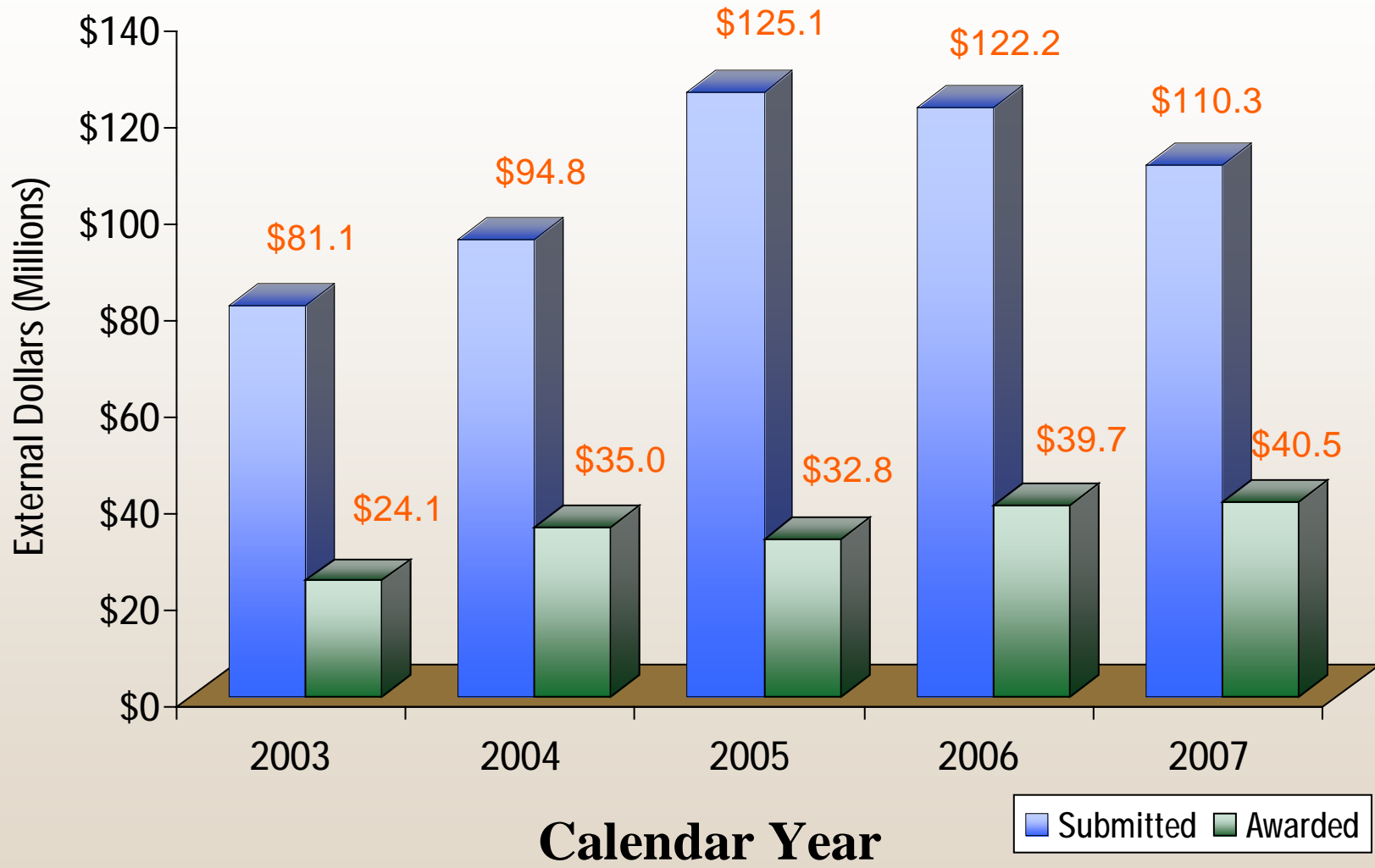
# PI Participation



# Proposals Submitted



# Value of Proposals and Awards



# PI Institute and Grant Writers' Boot Camp Presenters



William Basener  
Stefi Baum  
David Borkholder  
Nicole Boulais  
Donna Cullen  
Steven Day  
William Destler  
Nicholas DiFonzo  
Michael Dwyer

Lisa Elliot  
Scott Franklin  
Joseph Geigel  
Lisa Hermsen  
Karl Hirschman  
Seth Hubbard  
Guy Johnson  
Santosh Kurinec  
Andreas Langner

Kathleen Lamkin-  
Kennard  
Varda Main  
S. Manian  
Ramkumar  
Sean Rommel  
Sara Schley  
Robert Teese  
Lynn Wild  
George Zion

# 2007 Grant Writers' Boot Camp



# PI Millionaires

*Principal Investigators whose cumulative sponsored funding since the year 2000 has exceeded \$1,000,000*

## **Class of 2001**

Laurie Brewer  
D. Robert Frisina  
Ian Gatley  
Karen Hopkins  
Marilyn Mitchell  
Nabil Nasr  
Jim Reilly  
John Schott  
Tony Vodacek  
Corporate Education &  
Training  
First In Class Information  
Technology Laboratory  
Printing Applications  
Laboratory

## **Class of 2002**

Don Boyd  
Dianne Brooks  
Jim Decaro  
Guy Johnson

## **Class of 2003**

Gerry Bateman  
Roy Berns  
Linda Meyer  
Ryne Raffaele

## **Class of 2004**

Marie Giardino  
Doug Merrill  
Zoran Ninkov  
Harvey Rhody  
Bruce Smith  
Dianne Spang  
Mike Stinson

## **Class of 2005**

Greg Evershed  
Sue Foster  
Santosh Kurinec  
Marc Masrchark  
Ken Posman  
Risa Robinson  
Jeff Rubin  
James Winebrake  
Imaging Products  
Laboratory  
Manufacturing  
Technologies Program

## **Class of 2006**

Stefi Baum  
Paula Brown  
Karl Hirschman  
John Klofas  
Jim Myers  
Carl Salvaggio

# 2007 PI Millionaires



## **Daniel Burge**

Senior Research Scientist  
Image Permanence Institute  
College of Imaging Arts and Sciences

# 2007 PI Millionaires



## **Donald Figer**

Professor

Center for Imaging Science  
College of Science

# 2007 PI Millionaires



## **Satish Kandlikar**

James E. Gleason Professor of  
Mechanical Engineering  
Kate Gleason College of Engineering

# 2007 PI Millionaires



## **Donna Lange**

Associate Professor of  
Information & Computing Studies  
National Technical Institute for the Deaf

# 2007 PI Millionaires



## **David Merritt**

Professor of Physics  
School of Physical Sciences  
College of Science

# 2007 PI Millionaires



## **Thomas Gennett**

Professor of Chemistry  
School of Physical Sciences  
College of Science



## **Michael Haselkorn**

Research Faculty  
Systems Modernization & Sustainment  
Center for Integrated Manufacturing Studies



## **Michael Thurston**

Research Faculty  
Systems Modernization & Sustainment  
Center for Integrated Manufacturing Studies



## **George Zion**

Professor of  
Engineering Technology  
College of Applied Science and Technology



# BATTING 1000 IN 2007



Introducing this year's lineup ...

Stanley D. McKenzie  
Provost

# Batting 1000 in 2007

## **Daniel Burge**

Image Permanence Institute, CIAS  
Institute of Museum and Library Services  
*"The DP3 Project: Digital Print Preservation Portal"*

## **Manuela Campanelli**

Center for Computational Relativity & Gravitation, COS  
National Science Foundation  
*"Simulations of Black-Hole Binaries with Moving Punctures"*

## **Benjamin Davies**

Chester F. Carlson Center for Imaging Science, COS  
National Aeronautics & Space Administration  
*"The Pre-Supernova Mass-Loss of Red Supergiants"*

## **Richard DeMartino**

Management and International Business, EPSCOB  
National Collegiate Inventors and Innovators Alliance  
*"The Digital Entrepreneurship Program"*

## **Seth Hubbard**

Physics Department, School of Physical Sciences, COS  
National Aeronautics & Space Administration  
*"Novel Solar Cell Nanotechnology for Improved Efficiency and Radiation Hardness"*



# Batting 1000 in 2007

## **Emmett Ientilucci**

Chester F. Carlson Center for Imaging Science, COS  
Naval Research Laboratory

*"Generation and Characterization of Physically-Derived Signature Space"*

## **Kathleen Lamkin-Kennard**

Mechanical Engineering, KGCOE  
National Institutes of Health

*"Hydrodynamic Contributions to Neutrophil Adhesion in Branched Vessels and Networks"*

## **Luther Troell**

Networking, Security, and Systems Administration, GCCIS  
National Security Agency

*"Computer Security and Information Assurance Scholarship Program"*

## **Steve Weinstein**

Mechanical Engineering, KGCOE  
General Motors

*"Model of Fluid Flow through a Coating Die"*

## **Hiroko Yamashita**

Foreign Language, CLA  
National Science Foundation

*"International Conference on Head-final Structures"*



# Batting 1000 in 2007



# Batting 1000 in 2007

## **Julie Blowers**

Osher Lifetime Learning Institute  
Bernard Osher Foundation  
*"Establishment of the Osher Lifetime Learning Institute"*

## **E. William Clymer**

Center on Access Technology, NTID  
National Science Foundation  
*"Summit to Create a Cyber-Community to Advance D/HOH in STEM"*

## **Scott Dewey**

Systems Modernization and Sustainment, CIMS  
General Motors  
*"HALT Testing"*

## **Susan Farnand**

Carlson Center for Imaging Science, COS  
Eastwood Harvey Corp.  
*"Assessing Impact of Third Dimension on Perceived Image Quality"*

## **Myrtle Jones**

School of Print Media, CIAS  
Electronic Document Systems Foundation  
*"2007 Print Supplier and Provider Survey"*

## **Franziska Frey**

School of Print Media, CIAS  
Andrew W. Mellon Foundation  
*"Benchmarking Art Image Interchange Cycles"*

## **William A. Johnson, Jr.**

Public Policy, CLA  
Ford Foundation  
*"National Training Center for Minority Civic Engagement"*

## **Katie Terezakis**

Philosophy, CLA  
National Endowment for the Humanities  
*"The Fate of Romanticism: From Faust to the Present"*

## **Erik Vick**

Information Technology, GCCIS  
US Army  
*"Multi-Level, Modular Authoring for Scenario-based Intelligent Tutoring Systems"*

# BATTING 1000 IN 2007

*Congratulations!*



# 2007 PI Institute Graduates



Twyla Cummings  
Steven Day  
Michael Dwyer  
Susan Farnand  
Chance Glenn  
Andrew Herbert  
Kerry Hughes  
Santosh Kurinec

Marc Marschark  
Edward McCarthy  
Lyndsey McGrath  
Sam McQuade  
Dorin Patru  
Ryne Raffaele  
Thomas  
Reichlmayr

Lon Smith  
Danielle Smith  
Susan Watson-  
Moline  
Timothy Wells  
Keith Whittington  
Tamas Wiandt  
Bo Yuan

# Participatory Virtual Theatre at RIT

Joe Geigel

Associate Professor

Golisano College of Computing and Information  
Sciences



# RIT PubCentral

## RIT Pub Central



### RIT Faculty & Staff Bibliography Database

The RIT Pub Central database was created by the RIT Libraries to be a bibliographical listing of all RIT faculty and staff research and writings. Various formats of research results, such as journal articles, books, chapters, exhibitions, software/multimedia, and working papers are included. While the database is available for anyone to search, only current RIT faculty and staff may enter new citations.

Faculty and staff interested in submitting the full-text of their scholarly research and peer-reviewed materials should visit the RIT Digital Media Library or contact the Publishing & Scholarship Support Center.

Please forward any questions or comments to Marianne Bushler, Head of Publishing & Scholarship Support Services.

Search:

Enter your search terms here for a site-wide search.

- [Home](#)
- [Authors](#)
- [Citations](#)
- [Citation Types](#)
- [Submit A Citation](#)

#### Latest Citations

[Determinants of Co-Authorship for the Most Productive Authors of Accounting Literature](#)

[Impact of Regulation on the Reporting Behavior of Firms: The Sarbanes-Oxley \(SOX\) Compliance](#)

[Instructional Resources \(Book Reviews\)](#)

[Have a look at all the citations by viewing the citation listing.](#)

#### Citation Types

[Journal Article](#)

[Book](#)

[Chapter in a Book](#)

[Article in Proceedings](#)

[Dissertation](#)

[Exhibition](#)

[Exhibition Catalog](#)

[Film, Video or Animation](#)

[Don't see what you're looking for? View all the citation types.](#)

#### Authors

[Aaronson, J. S.](#)

[Abraham, Michelle](#)

[Abramowicz, J. S.](#)

[Adams, Julie A.](#)

[Adams, Edward W.](#)

[Adams, II, Richard A.](#)

[Adduci, J.](#)

[Adiga, B. S.](#)

[Looking for a different author? View all authors in our database.](#)

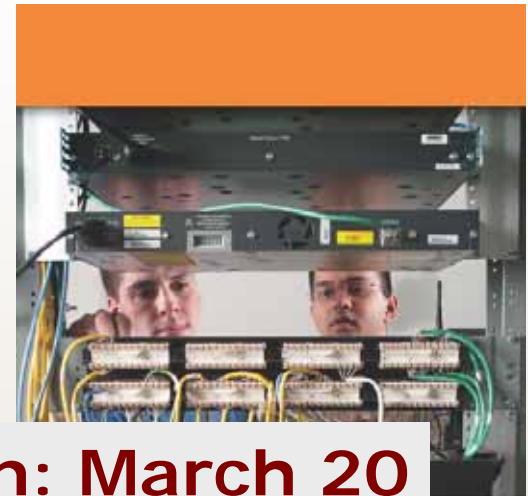


©2008 RIT Libraries, Rochester Institute of Technology, 90 Lomb Memorial Dr, Rochester, NY 14623 (585) 475-2562  
Contact RIT Libraries | Terms of Use | Copyright Infringement



**R·I·T** Principal Investigators 2007

# Corporate R&D Initiative



## Faculty Information Session: March 20



arguments over intellectual property. **Imagine** a new relationship between business and academia in which companies can enhance their development goals while gaining access to university expertise and student talent. RIT's new corporate R&D program is the first step!

work on a company R&D challenge.

- The work is carried out during the course of a year at a fixed price, which provides intellectual property ownership to the company
- Access to students with faculty advisers who have corporate experience

**The Benefits of Corporate R&D at RIT**

- The company retains ownership of intellectual property generated through the project.
- An agreement is made that covers all aspects of the project including student work.
- Companies need only to approve the statement of work for each new project.
- Projects are low cost compared with in-house research or company-to-company partnerships.
- Companies get a first look at students as potential future employees.

**Rochester Institute of Technology (RIT)**

Founded in 1829, RIT is an internationally recognized leader in professional and career-oriented education enrolling more than 16,000 students. RIT has one of the oldest and largest co-op programs in the world. RIT is co-educational, and the 13th largest privately held university in the nation.

RIT offers a wide variety of academic programs and is a leader in scientific, technical, engineering, computing, information technology, business and leadership education and research. The university is internationally respected for its programs in the creative arts and its research in imaging and color science, engineering, computational applications, and manufacturing technology.

RIT's modern 1,300-acre campus is located in Rochester, the third largest city in New York state.

**Please Contact Us**  
 Mike Dwyer  
 RIT Research Relations Office  
 585-475-2698  
 mike.dwyer@rit.edu

**R·I·T**

104100310/04MAR08



