

# R·I·T

The  
University Magazine Winter 2002

A photograph of a man with glasses, wearing a brown suit jacket, a white shirt, and a red tie. He is speaking into a microphone and has his right hand raised in a gesture. The background is dark.

## Powered by the Future

The Campaign for RIT

**Special section: 2002 Report of Giving**

Plus: News, feature stories, alumni profiles, activities and class notes





Rochester Institute of Technology

## The University Magazine Winter 2002

### Executive Editors

Deborah M. Stendardi  
Government and Community Relations  
Bob Finnerty, University News Services

### Managing Editor

Laurie Maynard '89, University News Services

### Editor

Kathy Lindsley, University News Services

### Contributing Editors

Laurel Price Jones, Development  
Lisa Cauda, Development  
Susan Watson Moline, Development  
Debbie Kingsbury, Development  
Kelly Redder, Alumni Relations

### Art Director

Colleen McGuinness-Clarke '87  
University Publications

### Photographer

A. Sue Weisler '93, University News Services

### Writers

Silandara Bartlett  
Kathy Lindsley  
Susan Murphy '95  
Michael Saffran  
Paul Stella  
University News Services

### Print Production Specialist

Angela Holland, University Publications

### University News Services

132 Lomb Memorial Drive  
Rochester, NY 14623-5608  
Voice: 585-475-5064, TTY: 585-475-5414  
Fax: 585-475-5097, E-mail: [umagwww@rit.edu](mailto:umagwww@rit.edu)

### Office of Alumni Relations

Crossroads 41 Lomb Memorial Drive  
Rochester, NY 14623-5603  
Voice: 585-475-ALUM, Toll Free: 866-RIT-ALUM  
TTY: 585-475-2764, Fax: 585-475-5308  
E-mail: [ritalum@rit.edu](mailto:ritalum@rit.edu)

Rochester Institute of Technology, Rochester, New York, publishes *The University Magazine*. RIT will admit and hire men and women; veterans; people with disabilities; individuals of any race, creed, religion, color, national or ethnic origin, sexual orientation, age or marital status in compliance with all appropriate legislation.

Vol. 4, No. 3, 100M-0534-11/02-1P

Printer: The Lane Press

© 2002 Rochester Institute of Technology

All rights reserved

## A message from the President

It is a pleasure to write to alumni and friends of RIT and introduce the first issue of the expanded university magazine. In this issue, we are taking the opportunity to record and thank the many donors and volunteers who have made commitments to the university.

I am proud, too, to tell alumni and friends about The Campaign for RIT (see pages 6-11). This fundraising initiative is as critical to RIT's future as any of the other strategic programs undertaken in the past decade. And the campaign is only possible because of the university's success in recruiting higher caliber students and faculty. The value of an RIT degree has risen and so has the need for the kind of education RIT provides.

I hope that as you read about the campaign you will want to join the thousands of individuals, corporations and foundations that have invested in the university to date – with total contributions of \$151 million. And I hope that you will begin to make giving to RIT an annual event. The percentage of alumni who make a gift to the university each year is one of the factors used to measure the success of the university. For many years RIT's "participation rate" has been well below the national average. Because of this, the strengths of the university are overshadowed in national rankings.

I ask each of you to consider making whatever gift you can in response to the annual appeal. Not only will your gifts be used in support of the educational needs of 15,317 RIT students, they also will help the university by showing the rest of the nation that RIT alumni support the kind of education that RIT stands for – career-focused, applications-oriented education that puts the needs of undergraduates first.

If you think RIT made a difference in your life, think of the difference you can make at RIT today.

Albert J. Simone  
President



# R·I·T

The  
University Magazine Winter 2002

## Features

- 6 Powered by the Future**  
RIT's \$300 million campaign
- 12 RIT EMBA Spells Success**  
Program gets praise from students, graduates and employers
- 14 True Colors**  
Imaging scientist Roy Berns sheds new light on works of art
- 33 2002 Report of Giving**  
Annual account of gifts to the university

## Departments



Students matter to Mary-Beth Cooper

- 2 On Campus**  
News from RIT
- 4 Singled Out**  
Mary-Beth Cooper
- 5 RIT Works!**  
Grads help Wegmans grow
- 16 Gallery**  
Inner Beauty
- 18 Connections**  
News, notes and stories about alumni activities

## Cover

President Albert Simone's 10-year tenure at RIT has been marked by growth and achievement. Now the university is undertaking a \$300 million fundraising effort. Photo by A. Sue Weisler '93

Back cover: RIT marked the beginning of the public phase of a \$300 million campaign on Sept. 28. Photo by Kurt Brownell '96

Right: "Arthritic Hand" by Patricia Gast '85  
© 2000 Lippincott Williams & Wilkins







# On Campus

## Ritskeller transformed into interactive ESPN Zone

The first-ever ESPN Interactive Experience on a college campus opened at RIT in September. Located in the remodeled Ritskeller, it features more than a dozen TV screens and an interactive ESPN SportsCenter desk where students can take a turn as sports broadcaster and e-mail video clips of their performance to friends.

The project is made possible through partnerships with ESPN and Time Warner Cable.

Sean Bratches '84 (business administration), executive vice president of affiliate sales and marketing for ESPN, helped make the Ritz Sports Zone a reality.

"We are very pleased to work with RIT and Time Warner Cable to showcase the ESPN brand and foster greater student enrichment on campus," Bratches says.

The Ritskeller saw a complete refurbishment as part of the ESPN project. The remodeling included new carpeting, wall treatments and some eye-catching fiber-optic lighting. RIT, ESPN, and western New York sports memorabilia cover the walls.

**The SportsCenter desk gives visitors the chance to try their own hand at reporting an ESPN "highlights segment" and then send the video clip to friends and family via the Internet.**



## Biotech education center launches with \$8 million in state support

RIT is receiving \$8 million from New York state in support of the Center for Biotechnology Education and Training (CBET). The state funding will allow RIT to begin the design process for a 46,000-square-foot facility to house CBET.

The state funding includes \$4 million from the state Senate's Gen\*NY\*sis fund, announced in September by Sen. James Alesi, and \$4 million from the Assembly, announced in October by Assemblyman Joseph Morelle and Assemblymember Susan John.

CBET will train professionals in the biotech industry and educate the community about biotech issues in the news, such as bioterrorism and its environmental effects.

"This funding provides us with the additional resources needed to move forward on this important program," says President Albert Simone. "Because of CBET, it is possible for Rochester and RIT to offer an extraordinary advantage to this industry – that is, access to the highly specialized tal-

ent that this facility will provide."

Conceived as a national model for comprehensive academic and career training programs in biotechnology, the center will increase New York state's competitive position in attracting biotechnology and biomanufacturing companies. RIT has been offering the bachelor's degree in biotechnology since 1983. "This new Center will take RIT to the next level as an educational leader in this rapidly growing field," said Simone.

## Business Dean Hopkins at Bush Economic Forum

Thomas Hopkins, dean of the College of Business, was invited to participate in

President George Bush's Economic Forum in Waco, Texas, in August.

Hopkins was invited by the White House to participate on the panel discussion, "Small Business and Smarter Regulation." Last year, Hopkins co-authored a report on the impact of regulatory costs on small firms commissioned by the Small Business Administration's Office of Advocacy. The report concluded that, in 2000, Americans

spent \$843 billion to comply with federal regulations, which equals 8 percent of the U.S. Gross Domestic Product.

In a follow-up article in *The New York Times*, Hopkins noted that Vice President Dick Cheney was "surprisingly quiet," allowing the president to do the majority of the talking. Small business owners stuck to macro-economic issues, Hopkins told the newspaper, and corporate CEOs kept a low profile.

Since 1978, Hopkins has made more than a dozen appearances before federal officials in the United States and Canada to discuss issues related to regulatory costs and reform. Prior to joining RIT in 1989, Hopkins held senior management positions in the Ford, Carter and Reagan administrations, including deputy administrator for information and regulatory affairs in the Office of Management and Budget.



**Thomas Hopkins**



**LIGHT IN THE DARKNESS . . .** Sept. 11, 2002, was a "Day of Remembrance" on campus. Students, faculty and staff found time apart from regular responsibilities to mark the tragic events of a year earlier and honor those who died. One of the many memorials was a solemn candlelight vigil attended by several hundred students.

## College of Imaging Arts and Sciences celebrates century mark

The test of time is a common measure of success. In that spirit, the College of Imaging Arts and Sciences celebrates the triumphs that are responsible for several of its long-standing programs.

The 2002-03 academic year marks 100 years since the creation of a fine arts department, which served as the origin for RIT's School of Art and School of Design. It was within that same period that the first photography class was introduced – the seed that germinated into the School of Photographic Arts and Sciences.

"We have a great story to tell," says Joan Stone, CIAS dean. "By commemorating these milestones, there's an opportunity to assure support for future programs within our college. It's an opportunity we simply can't miss."

The college is sponsoring a series of centennial events. Activities include various art, design and photographic exhibitions on campus at SPAS Gallery and Bevier Gallery, and at Gallery r on Park

Avenue in downtown Rochester.

One of the recent highlights has been a visit to RIT by world-renowned designer Massimo Vignelli sponsored by the School of Design. He was granted an honorary doctorate of fine art during a presentation on Nov. 8.

Vignelli, a native of Italy, is the co-founder and president of Vignelli Associates and chief executive officer of Vignelli Designs in New York. His work has been published and exhibited

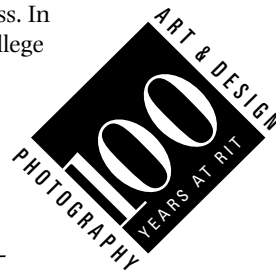
throughout the world and included in the permanent collections of noted museums.

School of Art alumni will be welcomed back to campus Dec. 6-8 for a weekend of events. Those attending will be treated to a special banquet, studio tours, a student art sale and a

pair of exhibitions featuring artwork by alumni and past faculty members.

In spring, SPAS will take center stage during a salute to 100 years of photography. Events include a weekend celebration for photo alumni and a special exhibit of images spanning the century.

For more information contact Deb McKinzie at 585-475-2128.



**Massimo Vignelli**



## Famous firm lights RIT

RIT is glowing about a new project that involves an internationally recognized architectural lighting firm.

Fisher Marantz Stone is perhaps best known for creating the “Tribute in Light” at the World Trade Center site. RIT is working with FMS to upgrade lighting throughout campus over the next several years.

“As you look at the campus at night, we have a lot of illumination, primarily organized for security purposes. But it doesn’t address aesthetics,” says James Watters, vice president for finance and administration.

“The exterior nighttime environment is of paramount importance to a university campus,” says Charles G. Stone of FMS. “Students, faculty and staff are affected and influenced by their surroundings. A thoughtful and thorough approach to lighting and infrastructure will improve the way in which one lives and works at RIT.”

Lighting on campus today is deficient in some areas and too bright in others. Energy efficiency and pedestrian safety are top priorities. RIT also can enhance the campus’s visual appeal with accent lighting on its buildings.

FMS, based in New York City, has created innovative and economic lighting designs for more than 2,500 projects around the world since 1971.

## In memoriam

**Theodore “Ted” Altier**, RIT trustee since 1977, died June 21 following a long illness. He was the retired chairman and treasurer of Altier & Sons Shoes. Altier was active in RIT’s Nathaniel Rochester Society and in 1983 received the College of Business William D. Gasser Award. He is survived by his wife, Betty Jane, and three children. . . .

**Mary Dean Brewer**, 59, died Feb. 26 after a battle with cancer. An RIT employee from 1978 to 1988, she headed experiential learning programs in the College of Business, served as associate director in cooperative education and career services, and was a senior development officer. She is survived by her husband, George Alley, former head of RIT’s food, hotel and tourism management program. . . . **Walter Fallon**, RIT trustee since 1970, died July 24. He was 84. During his decade as chairman and CEO of Eastman Kodak Co., the company tripled in size and added more than 30,000 jobs. He retired in 1983.



## Singled Out

### Mary-Beth Cooper: studying students

As RIT’s primary student advocate, Mary-Beth Cooper exemplifies her theme for this year: “Students Matter.”

Cooper, the new vice president for student affairs, will take a close look at programs of the Division of Student Affairs, assessing how well they meet student needs and whether they remain relevant for an ever-evolving student population.

To stay current with what students are thinking and where they find roadblocks on the journey to academic success, Cooper takes classes.

She’s been a student at almost every school where she’s worked. At Michigan State University, where she earned a Ph.D. in college and university administration, she was a residential director. At the University of Georgia, while working in residential life, she earned a master’s in education. Most recently, while dean of students at the University of Rochester, she picked up an MBA. The only exception was when she was dean of students and chief of student affairs at St. John Fisher College in Rochester.

“Taking classes with students helps me understand what it’s like to be a student on a campus at that particular time in the institution’s history. Simple things like registering for class to trying to get a cup of coffee after class gets me closer to what students are experiencing,” she says. “If we are not careful, administrators can become isolated from the student experience.”

At RIT, Cooper is enrolled in the deaf studies certificate program at NTID. The six-course program is an ideal foray into student life, she says. Cooper is discovering that understanding deaf students is a lot more than just learning sign language. Knowledge of deaf culture and history is as important as language.

Class time is one way to interact with students. She also connects with students through monthly dinners at her home and Thursday drop-in office hours. Increasing student representation on university committees is another way to get feedback on how RIT can better meet their needs.

Also on Cooper’s agenda for the coming year is a close look at programs designed to ease first-year students’ transition to college life. But first-year students aren’t her only concern.

“I want to understand the RIT student experience all the way from orientation to commencement,” she says. “How can we make that experience more satisfying and stimulating?”

By going out of her way to maintain student contact and communication, she’s become more than just an administrator.

“Dr. Cooper is my friend,” says Student Government President Erick Littleford. “In the sea of faces, acquaintances, colleagues, and peers, she comes across as a loyal and supportive friend.”

# R·I·T Works!

## RIT grads find super careers at Wegmans

### Alumni who move away from the Rochester area harbor fond memories of one local institution: Wegmans Food Markets.

There's good news for some of the many who've wished the Rochester-based supermarket chain would open a store near them. Wegmans, which operates 63 superstores in New York, Pennsylvania and New Jersey, plans to open stores in the Baltimore, Philadelphia and Washington, D.C., areas in the next several years.

RIT alumni play a role in the company's tremendous success. Wegmans employs more than 100 graduates, including two among the 15 senior vice presidents in the family-owned company. Gerard Pierce '77 (MBA), senior vice president for human resources, started working for Wegmans in 1975. James Leo '76 (MBA), senior vice president and chief financial officer, joined the company in 1978.

Pierce, who grew up in the Rochester area, had an undergraduate degree in marketing from the University of Dayton and experience in the insurance industry as well as at his father's grocery store when he joined Wegmans. He took a job as a store night manager while attending RIT, where he focused his studies on human resources management.

After graduation, he was ready to move into the company's human resources department. The responsibilities have expanded geographically as well as geometrically.

"When I came here, there were 3,000 employees," he notes. "Now there are 30,000." In the next five years, the company will be hiring 15,000 people.

Pierce, who reports to company President Danny Wegman, says the company has been successful in this continuing effort because of the Wegman family philosophy: "They always put people first," he says.

There's substantial evidence of this: The company has been named one of the "Top 100 Companies to Work for in



Gerard Pierce '77 (left) and James Leo '76 have worked for Wegmans since their college days. Today, they're among the company's top executives.

America" by *Fortune* magazine for five years in a row. "We're very proud of that," says Pierce.

RIT benefits from one of Wegmans' employee benefits. Since 1996, recipients of Wegmans scholarships attending RIT have received \$925,000 to fund their studies. Wegmans began the scholarship program in 1984.

Wegmans and RIT are also partners in the Hillside Work-Scholarship Connection, which now involves nearly 1,000 youngsters. Founded in 1987 by Wegmans, the program links at-risk adolescents to a network of advocates and employers, support that helps the youngsters stay in school and find success. RIT offers scholarships to participants who are accepted at RIT.

Funding such projects and the company's many other community activities relates directly to Jim Leo's primary responsibility.

"My job is to increase the profitability of the company," he explains.

Leo, another area native, received his undergraduate degree in accounting from St. John Fisher College. His first job at Wegmans was as cash manager in the corporate office. He says the practical, applied emphasis of his MBA courses at RIT helped him develop a "gut feel" for business, and "an understanding of the people part."

"Gerry and Jim have made outstanding contributions to Wegmans'

success over the years," says Danny Wegman. "Like our family and our company, they both have deep roots in the Rochester community. And so does RIT. Wegmans and RIT are connected through the many students and graduates who work here. In fact, my daughter, Nicole, has just begun her MBA studies at RIT this fall. Obviously, we're sold on RIT."

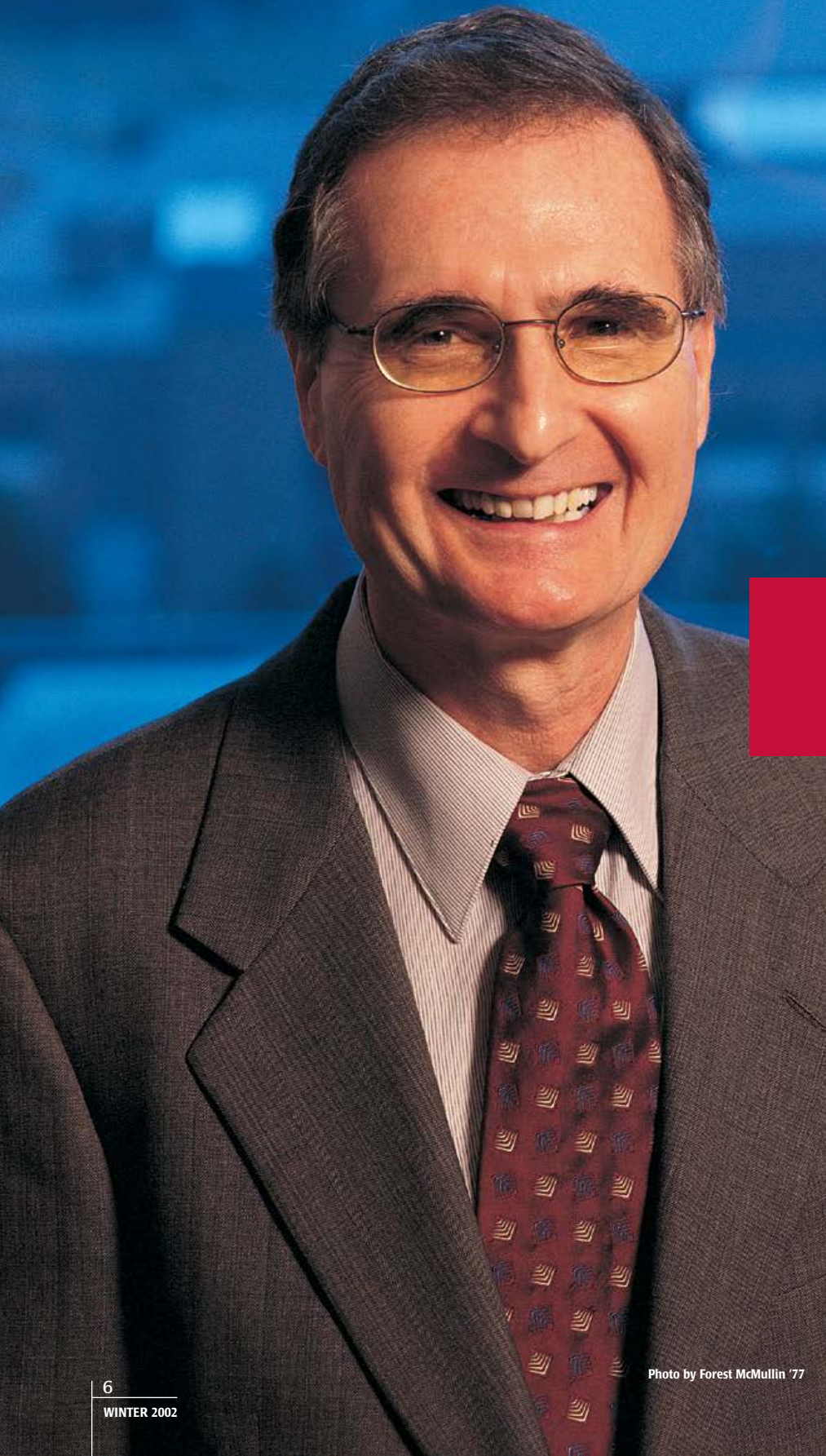
Leo and Pierce both say that when they started out with Wegmans, they couldn't have imagined where their careers would take them.

"I took a job that was available in a field I was interested in, for a company that sounded interesting," says Leo. "It's turned out to be even more interesting than I thought."

Says Pierce, "It's always challenging, and there's always opportunity for growth. It's a great place to shop – and a great place to work."



## Building upon a decade of change



It is not often that RIT looks back to where it's been. We're too busy looking ahead. This is a special moment in the history of the university, however: the occasion of Albert J. Simone's 10th anniversary as president. It has been a decade of extraordinary achievement.

His first day on the job in 1992, President Simone laid out his hopes for RIT to faculty and staff with what would become his trademark logic, energy and vision.

He praised President Mark Ellingson, the architect of RIT's move to the 1,300-acre campus; President Paul Miller, who expanded academic programs and service to the community; and President M. Richard Rose, who moved RIT to national-university status.

# POWER

In fall 1992, enrollment was 13,000, making RIT the 17th largest private university in the nation. The university was financially sound, with an endowment of \$189 million and an operating budget of \$236 million. The signature programs were in microelectronics engineering, photography and graphic arts, and imaging science, as well as those in the School for American Crafts and the National Technical Institute for the Deaf (NTID).

While all of this was impressive, it was not enough for Dr. Simone. That very first morning, he called for strategic planning – planning that required a clear understanding of institutional identity.

Photo by Forest McMullin '77



"RIT is a university that holds the students at heart and teaching as noble," he said. Working from this premise, he quickly convened an institute-wide task force and by 1994, the board of trustees had approved a 10-year strategic plan. RIT's mission was articulated in that plan – to lead higher education in preparing students for successful career development over their lifetimes.

Under President Simone's leadership, RIT has experienced unprecedented growth in enrollment, endowment, and programs. Enrollment now totals more than 15,317 students, raising RIT to the nation's eighth largest private university. Student population is growing more diverse: One third is female; 1,100 students deaf or hard-of-hearing. International enrollment exceeds 1,200, the largest in RIT history.

While growing in numbers, RIT is becoming increasingly selective in admissions. For the class entering in fall 2002, a record 2,400 students were selected from more than 8,900 applicants.

new academic degree programs in such areas as information technology (the first in the nation), software engineering, biochemistry, psychology, and new media.

Today, RIT offers more than 200 degree programs in areas as distinctive and diverse as film/video/animation, biotechnology, international business, telecommunications engineering technology and the programs at NTID.

In addition, we are transforming key academic areas of strength to **First in Class** stature. An institute-wide initiative, **First in Class** puts RIT on a course to become first among all universities that form partnerships with industry and government to address real-world problems. Achievements of this initiative include: creation of the IT Collaboratory, Sloan Printing Industry Center, Laboratory for Advanced Spectral Sensing, and the Laboratory for Applied Computing; strengthening of the National Center for Remanufacturing and Resource Recovery; and development of two new degree programs in bioinformatics and the nation's

Greek residences; Crossroads Market Café and Copy Center; and Java Wally's coffeehouse in Wallace Library. In addition to major upgrades of residence halls and classrooms, the James Gleason engineering building was extensively renovated. We also have enhanced lacrosse, soccer, and baseball fields as well as outdoor track and field facilities. Ground is broken for the 160,000 square-foot Gordon Field House and Activities Center. As part of a campus beautification project, new roads and walkways have been constructed.

RIT is engaged in community, national, and global issues as never before. Last year alone, the university achieved 10,000 placements in the media and drew 12,200 visitors for campus events such as Special Olympics. In the past decade, RIT hosted a former U.S. president and the director of the CIA as commencement speakers, the latter during the post 9/11 War on Terrorism.

We have been blessed with an extraordinary board of trustees over the past decade, particularly in its chairs Colby

# ED by the FUTURE

President Simone recognizes that financial strength is essential for the success of the educational mission. In his 2002 "Community Address," he stressed, "No matter how hard we may work and how creative we might be, at some point financial resources have to be in place." While the university's \$405 million endowment has noticed the effects of the current recession, nevertheless it has more than doubled over the past 10 years, thanks to the generosity of friends and wise investment strategies.

Clearly, this has been a decade of academic milestones. Two of the eight colleges were named: the Kate Gleason College of Engineering (the nation's only college of engineering named for a woman) and the B. Thomas Golisano College of Computing and Information Sciences (the largest computing college in the country). In addition, RIT introduced

first Ph.D. program in microsystems engineering.

Other connections to industry continue to thrive. Our co-op program is the fourth largest in the world. Last year, RIT garnered a record \$26 million in sponsored research from industry and government. At the Center for Integrated Manufacturing Studies (CIMS), nearly 420 research projects were performed for 760 companies.

Over the past 10 years, the university has invested more than \$10 million in campus facilities. Significant construction projects include the new home for the B. Thomas Golisano College of Computing and Information Sciences; Gosnell Center for Excellence in Mathematics, Science, and Technology; College of Applied Science and Technology Building; Joseph F. and Helen C. Dyer Arts Center at NTID; six University Commons apartments; six

Chandler, William Whiteside, William Buckingham '64 and Bruce James '64. In support of the growing alumni population – now numbering 90,000 – we have, for the first time, planned and implemented a full program of alumni reunions – the first held in 2001 during Brick City Festival. Also for the first time, Alumni Relations activities are posted on the Web for a growing online alumni community.

Today, President Simone has a new vision of RIT as the university of choice for students seeking technology-based education with application in the global community. While he would say the need for this new, more expansive vision of RIT is a tribute to our collective accomplishments, others will say it is simply the reflection of a man always asking what's next.

# The Campaign for RIT



On Sept. 28, 2002, RIT made history. That evening, before a crowd of 300 volunteers, donors, and friends in the Clark Gymnasium, RIT announced the launch of its most ambitious fundraising campaign – a campaign whose goal is \$300 million and theme is “Powered by the Future.”

“This campaign is a bold statement,” said President Albert J. Simone, “to the Rochester community but also to this nation and to the world that Rochester Institute of Technology is preparing now to meet the demands and opportunities of technological education in the new century.”

Campaign preparation and fundraising began in 1998, following six years of university-wide strategic planning. Since then, the board of trustees has joined key administrators in establishing a steering committee, hiring critical development staff, determining campus-wide priorities of need, and meeting with hundreds of

The Campaign for RIT is comprehensive with goals for both capital and special operating needs. It seeks resources to propel the university to the next level in terms of student and faculty recruitment and success, campus facilities, and research opportunities.

“The campaign is necessary to provide the funding for the current and future growth of RIT,” states Bruce James ’64, chairman of the board of trustees. “It is imperative that we make significant investments today in order to reap the rewards long into the future.”

President Simone believes that RIT’s uniqueness makes the university a sound

research around partnerships with industry and government so that when our students graduate, they are fully aware – and prepared to meet – the challenges and opportunities faced by industry and government.”

## A terrific beginning

In 1998, in coordination with the Gleason Foundation, James and Janis Gleason were among the first to make a leadership gift to the campaign. In recognition of their \$12 million gift, the largest single gift ever received by the university, RIT named the Kate Gleason College of Engineering for Kate Gleason, former secretary-treasurer of Rochester’s Gleason Works and a pioneer in engineering. The first woman elected a member of the American Society of Mechanical Engineers, Ms. Gleason was also the first woman president of the First National Bank of Rochester. The gift has been used to recruit more women and minority students in engineering; to develop new graduate and research programs; and to renovate the 30-year-old James E. Gleason Building, home to the college.

By the September 2002 public announcement, RIT had recruited nearly 200 volunteers to aid in the effort and raised more than \$150 million, putting the effort over the midpoint. In addition to Mr. and Mrs. Gleason, major contributors included trustee B. Thomas Golisano, Chairman and CEO of Paychex, Inc., whose \$14-million gift established the B. Thomas Golisano College of Computing and Information Sciences, the most comprehensive computing college in the nation; and Rochester businessman Ernest J. DelMonte and the DelMonte Corporation who gifted a hotel, valued at \$14 million and now re-named the RIT Inn and Conference Center.

“Rochester Institute of Technology is a real pillar of strength in our community,” commented Golisano, who is proud to



RIT kicked off the public phase of a \$300-million campaign at a special event in September. Seated, from left, are: Catherine Carlson, a longtime supporter of the Chester F. Carlson Center for Imaging Science; Trustee Bruce Bates, who funded the Bruce and Nancy Bates Study Center in the College of Science; and Rochester businesswoman and Trustee Christine Whitman. Standing, from left, are students Jeffrey Dank and David Fetzer, recipients of the Carlson Imaging Science Scholarship; Ian Gatley, dean of the College of Science; Thomas Henthorn, one of 30 Whitman Scholars; and Erick Littleford (at the podium), president of student government.

alumni, parents and friends of RIT to request and attain their early support. In fall 2001, the board officially approved the campaign goal and structure, an anticipated public announcement in fall 2002, and a target closure date of June 30, 2006.

investment. “RIT is different because of its career focus and because of its emphasis on the success of our undergraduate students. Teaching is the most important thing we do and learning is the most important outcome we have. We build our curriculum, our teaching and our



serve as honorary chair of The Campaign for RIT. "The quality of the output of students, the technical environment, the achievement level of the people who have attended the university and now are out in the work force is all terrific and we need to support institutions like RIT."

## Setting the goals

**Priority areas of need for The Campaign for RIT and their fundraising goals are:**

**Investing in Students: \$75 million**

**Recruiting and Retaining Top Faculty: \$50 million**

**Reinventing the Campus: \$70 million**

**Supporting Applied Research and Learning: \$75 million**

**Fund for the Future: \$30 million**



**The Nathaniel Rochester Society Scholarship Fund, established in 1991, has supported over 1,400 outstanding students.**

More than one-third of the \$300 million goal is sought for endowment. Growing RIT's endowment is critical to our ability to remain agile. The income from endowment provides for RIT programs in perpetuity – supporting scholarships and faculty, equipment and the library, for example. In June 2002, our endowment totaled \$405 million or \$27,000 per student – a figure that pales beside those of our chief competitors. In order to recruit and retain the leaders of tomorrow, we must increase current and endowed scholarship aid that is based on need and merit.

A 1959 graduate of the Kate Gleason College of Engineering, Charles Volpe wanted to give back. Remembering the financial struggles he felt as a student, he and his wife, Andrea, decided this past year to establish a full-tuition engineering scholarship in their name. "By removing

the financial concerns of even one student, I know that I am promoting excellence in education and helping that young person on the road to a successful career," he says.

With the rising cost of tuition— nearly \$19,000 for the 2002-03 academic year at RIT – some of the country's best students are forced to select their college or university based on the offer of financial aid. By raising significant new scholarship funds, we will secure RIT's share of these top students. Scholarship funds do more than boost enrollment figures: they also strengthen the quality of the student body, critical for recruiting top faculty.

"The best teachers are seeking the best students," observes Chairman James. "If we can demonstrate that RIT has been able to recruit top-notch students into our programs, we will have no problems finding the faculty for those programs."

RIT's faculty is committed to excellence in teaching and the university is committed to supporting the teaching and research needs of that faculty. Through an estimated 20 endowed professorships, requiring \$1.5 to \$3 million each, the campaign will provide the resources necessary to offer competitive faculty salaries in such cutting-edge areas as bioinformatics, microsystems, and photonics. An additional \$10 million in funding will support graduate assistantships, start-up funds for niche research, and specialized laboratory enhancements. The academic world is in fierce competition for talented faculty, and these resources are essential for RIT's continued leadership in technological education.

## Building for excellence

Consider this: RIT's campus was built in 1968 for a student body comprising 4,000 students. Today, enrollment exceeds 15,000. After almost 20 years of continual growth, driven by the addition of programs, RIT must ensure that our physical facilities keep pace. To do that, we are investing \$70 million in state-of-the-art classrooms and laboratories, more comfortable study spaces, and social venues.

Construction and renovation will touch each of the university's eight college buildings, specifically: increased space for the Colleges of Liberal Arts, Science, Applied Science and Technology, and the College of Business; further expansion of the Kate Gleason College of Engineering; theater, laboratory, gallery

## Endowment per Student Fiscal Year 2001

Princeton University  
\$1,292,962

MIT  
\$626,183

University of Rochester  
\$172,901

Carnegie Mellon University  
\$95,295

Rensselaer Polytechnic Institute  
\$84,389

RIT  
\$39,355

and workspace enhancements for the College of Imaging Arts and Sciences and the National Technical Institute for the Deaf; and completion of the home for the B. Thomas Golisano College of Computing and Information Sciences.

Among the exciting new construction projects supported by The Campaign for RIT is the Gordon Field House and Activities Center. The \$25-million, 160,000 square-foot field house will seat more than 8,000 people in a 60,000 square-foot venue that also will be an arena for indoor sports year-round. In addition, the complex will include a new fitness center, eight-lane competition pool, and recreation pool. (see [www.rit.edu/magazine/fall2002/fieldhouse/](http://www.rit.edu/magazine/fall2002/fieldhouse/))

"The Field House is something we're really looking forward to," says Erick Littleford '03, president of student government. "It's going to give us – for the first time – a venue where 8,000 students can come together in one space for big-name concerts and special events. The students are excited about that, and it's really going to do a lot for the campus."

The name for the facility, which honors long-time friend and trustee Lucius R. "Bob" Gordon, and his wife, Marie, was announced at the groundbreaking in September. A supporter and champion of RIT's mission for more than 60 years, Lucius Gordon became a key contributor to the field house through gifts and commitments totaling \$5 million.

The ability to keep up with, even anticipate, emerging technologies makes RIT attractive to both students and faculty.



This rendering depicts the proposed renovations of the Lowenthal Building, which houses the College of Business.



The new building for the B. Thomas Golisano College of Computing and Information Sciences is expected to open in spring 2003.

The opportunity for undergraduates, particularly, to work shoulder to shoulder with faculty on breakthrough research is rare among teaching universities but the norm at RIT. Such activities depend on state-of-the-art laboratories and equipment and keep RIT vital to industry. Joseph M. Lobo II '95, president of JML Optical Industries Inc. and vice chair of The Campaign for RIT, views RIT's research as an important means of advancing the university's educational mission while furthering Rochester's tra-

dition of excellence in optics. It was this commitment – to RIT, to Rochester, and to industry – that prompted his leadership gift of \$1.4 million to seed the **First in Class** program in photonics.

Another example of support for applied research and learning is the gift of a new Sunday 2000 commercial web press from Heidelberg Digital L.L.C valued at \$7 to \$10 million. "We are pleased to expand a partnership with RIT that benefits our entire industry," says Wolfgang Pfizenmaier, president of Heidelberg Digital. In addition to providing educational opportunities for students and industry, RIT conducts extensive applied research on campus for web offset printers and suppliers. The new Heidelberg

Web Press Laboratory incorporates state-of-the-art technology within RIT's world-renowned graphic arts program to create the best possible environment for advanced research and training.

support current needs and provide the fiscal flexibility critical to maintaining cutting-edge curricula and facilities. At RIT, we pride ourselves on what we call "institutional agility." What that means is the ability to respond quickly to new student needs. It also means the ability to recognize new opportunities early and to take advantage of them for the benefit of our students.

During The Campaign for RIT, we seek to increase alumni support of students through greater participation in the annual fund. Other important sources of unrestricted funds include bequests and other deferred gifts.

The new century will bring unprecedented change. With the financial investment and personal involvement of the entire RIT family – students, faculty, administrators, alumni, parents, and friends – we will raise the university to the next level of excellence. Join us now in helping RIT to become the preeminent model of a technological university committed to addressing the world's most critical needs.

"The RIT model of education is not only desirable . . . it is critical to the world," says President Simone. "By securing personal involvement and financial resources from our friends, and remaining focused on the future, RIT will remain the world's leader in delivering career-focused, technology-rich education."

**For more about the campaign, visit the Web at [www.campaign.rit.edu](http://www.campaign.rit.edu).**



At a groundbreaking in September, President Albert Simone (center) announced that RIT's Field House and Activities Center will be named for Lucius R. and Marie Gordon, longtime supporters of the university.

### Help from our friends

Tuition does not cover the cost of providing a technological education today. To narrow the gap between tuition and real cost, we depend on the support of thousands of gener-

ous supporters. The Fund for the Future, with a goal of \$30 million in unrestricted monies, will enable the university to direct funds wherever the need is greatest.

Annual, unrestricted funds directly



# Campaign Priorities

(all figures in millions)



www.campaign.rit.edu

	Investing in Students	Recruiting and Retaining Top Faculty	Supporting Research and Learning	Reinventing the Campus	Fund for the Future
<b>College of Applied Science and Technology</b>	<b>\$4M</b> Endowed scholarships and current scholarships	<b>\$8M</b> Endowed professorships including telecommunications technology and manufacturing	<b>\$3M</b> Center for Innovation and Leadership	<b>\$10–16M</b> New building; renovation of former computer science facility	<b>\$2M</b> Unrestricted funds
<b>College of Business</b>	<b>\$6M</b> Endowed scholarships and fellowships	<b>\$8M</b> Endowed professorships in management, e-business, and other key areas	<b>\$1M</b> Center for Technology Management	<b>\$5–8M</b> Renovation of Lowenthal Building; EMBA addition	<b>\$2M</b> Unrestricted funds
<b>B. Thomas Golisano College of Computing and Information Sciences</b>	<b>\$6M</b> Current and endowed scholarships and fellowships	<b>\$8M</b> Deanship; professorships in all three academic areas		<b>\$1M</b> Building enhancements	<b>\$1M</b> Unrestricted funds
<b>College of Imaging Arts and Sciences</b>	<b>\$6M</b> Current and endowed scholarships and fellowships	<b>\$6M</b> Endowed professorships in film and animation, and photography	<b>\$4M</b> Gallery development; School for American Crafts endowment	<b>\$4–16M</b> Craft Village renovation; film and animation studio renovation	<b>\$2M</b> Unrestricted funds
<b>College of Liberal Arts</b>	<b>\$4M</b> Endowed and current scholarships	<b>\$6M</b> Endowed professorships including international studies	<b>\$3M</b> Center for Science, Technology and Policy Studies; performing arts support	<b>\$3–7M</b> New building	<b>\$1M</b> Unrestricted funds
<b>College of Science</b>	<b>\$6M</b> Endowed and current scholarships	<b>\$6M</b> Endowed professorships in photonics, bioinformatics and other key areas	<b>\$9M</b> Bioinformatics lab; imaging science laboratory endowment	<b>\$8–29M</b> New building; renovation of Gosnell Building	<b>\$2M</b> Unrestricted funds
<b>Kate Gleason College of Engineering</b>	<b>\$6M</b> Endowed scholarships and fellowships	<b>\$8M</b> Endowed professorships including microelectronics, computer engineering	<b>\$5M</b> Ph.D. program in microsystems	<b>\$7–9M</b> Building addition	<b>\$2M</b> Unrestricted funds
<b>National Technical Institute for the Deaf</b>	<b>\$8M</b> Endowed scholarships, study abroad	<b>\$8M</b> Endowed professorships in technology and education of the deaf, and other key areas	<b>\$5M</b> Technology labs; automated speech/voice recognition research	<b>\$5M</b> Student development center; facility enhancements	<b>\$2M</b> Unrestricted endowments
<b>Campus-wide</b>	<b>\$20M</b> Endowed scholarships and fellowships, online learning, honors Program		<b>\$40M</b> Equipment endowment	<b>\$25M</b> Gordon Field House and Activities Center; Student Alumni Union renovation; athletic fields improvements	<b>\$6M</b> Unrestricted funds



# RIT EMBA spells success

**Emphasis on strategic thinking and practical application gets high marks from students and grads**

**In 1993, Joe Loboizzo, at age 50, had achieved an enviable level of success.**

**JML Optical Industries Inc., the company he founded in 1972, had become a profitable and growing designer, manufacturer and distributor of precision optical components and systems.**

At a point when others might begin to think about easing into retirement, Loboizzo became a member of RIT's first Executive Masters of Business Administration (EMBA) class.

"I really knew in my heart that the old way of doing things was changing," Loboizzo explains. "A new way of doing business was dawning, and JML Optical needed to change if it was going to be the very best in the world at what we do. The EMBA program was an opportunity to acquire knowledge we didn't have."

The decision proved momentous. The program "exceeded my expectations," from a business standpoint, says Loboizzo, and it led to a fortuitous relationship with the university. Loboizzo, who received his degree in 1995, became a member of the RIT Board of Trustees in 1999.



**Joe Loboizzo '95**

While Loboizzo's bond with RIT is extraordinary, his high opinion of the EMBA program is not unusual. In a survey of graduates of 38 executive MBA programs conducted in 2000 by the Executive MBA Council (an independent network of colleges and universities with EMBA programs), 93 percent of RIT's EMBA graduates rated the program an 8, 9, or 10 on a scale of 1-to-10.

Students and graduates say the practical focus of the program allows them to make use of newly acquired knowledge immediately and advantageously.

"What I'm learning is already very helpful in my job," says Debra Kusse, assistant to the president of Kodak's commercial imaging group. A 25-year Kodak employee who received her undergraduate degree in accounting from RIT in 1982, Kusse regularly takes new ideas directly from class back to work.

Kusse, who will graduate in May, says one of the key benefits is the opportunity to discuss the material with other students in and outside of the classroom.

Unlike traditional MBA students, EMBA students move through the program as a unit. Class size is limited to 30 students who begin their program with a week-long orientation on campus in August. They attend classes all day Friday and Saturday every other week from late August through May for two years.

**Above: Donald Wilson, director of RIT's MBA program, leads a session on strategy with the EMBA Class of 2003.**





**Deb Kusse makes a point in class discussion.**

There's a week-long session between the first and second years. They even eat together: Breakfast and lunch are provided on class days.

After two years of such intense contact, students get to know each other very well.

"So much of the learning in this type of class takes place in the classroom, in debate," says Donald Wilson, director of RIT's MBA program. "These people are not shy with each other. We have great discussions."

Another difference from traditional MBA programs: EMBA students are required to have a minimum of eight years of business experience. The average experience level, however, is 17 years. They also tend to be older: The average age is 42. Some students are sponsored by their employer, but many pay their own way.

"Our EMBA program excels at giving students the strategic and cross-functional skills they need to become successful general managers," notes Wilson. "Our students learn how to look at a business problem from multiple perspectives — marketing, finance, operations, and so forth — and then integrate these different dimensions into a 'total business' understanding."

Two aspects of the RIT program set it apart, says Ann G.T. Young, director of

the EMBA program. Toward the end of the second year, there's an optional, weeklong trip to the Czech Republic that incorporates visits to local companies and presentations on the economy, culture and aspects of global business.

Also in the second year, students work in teams on "capstone" projects, serving as consultants to organizations ranging from private businesses to non-profits.

"The teams spend 20 weeks helping organizations solve real-world business problems in areas ranging from manufacturing and finance to strategy and marketing," notes Young. "We've worked with more than 25 organizations, and companies are delighted with the results."

This past spring, for example, three EMBA students worked with the Deaf Wellness Center at Strong Memorial Hospital to create a business plan for the launch of Strong Connections, a video conferencing service that provides hospitals and clinics throughout the U.S. with medically experienced American Sign Language interpreters.

"The project could not have happened without the help of the EMBA students," says Robert Pollard, director of the Deaf Wellness Center. "Their commitment went well beyond academic responsibilities. They committed their heart and soul."

The entire program demands that level of effort.

"Time management is the hardest thing," says Penny Sanchez-Burrus '01, vice president and general manager, Xerox Business Services, Tarrytown, N.Y. "There were many stressful moments, balancing a job, family and school."

Sanchez-Burrus, a 22-year Xerox employee, was pro-



**Penny Sanchez-Burrus '01**

moted to her current job near the end of the second year of the EMBA program.

"The opportunity would have come up," she says, "but I think I was in a more competitive position because of the EMBA experience. It was very helpful."

Susan Bratton '96, vice president of corporate quality for Wilson Greatbatch Technologies Inc., Clarence, N.Y., likewise



**Susan Bratton '96**

is convinced that the program has led to career advancement.

Shortly after receiving her degree, Bratton took on the task of running the electrochem battery operation for WGT, a leading developer and manufacturer

of power sources and components used in implantable medical devices such as pacemakers and defibrillators. Under her management, the operation tripled in size and went through an important acquisition.

"Without the EMBA," says Bratton, "I'm not sure I would have gotten that assignment — or been able to handle it. Earning the degree created credibility and gave me confidence. I had the tool set to succeed."

Bratton, who has been with WGT 26 years, commuted 60-plus miles each way to attend classes, while managing work and family responsibilities (her children were 5 and 7 when she began).

"I had a very supportive husband and boss," she says. "It was grueling, but definitely rewarding."

"When I finished I felt like I could accomplish anything."

**For more information, contact the Executive MBA Program, College of Business, Rochester Institute of Technology, 107 Lomb Memorial Drive, Rochester, N.Y. 14623; 585-475-7435; [www.ritemba.com](http://www.ritemba.com)**

## RIT has many options for earning graduate degrees

RIT offers graduate degrees and advanced certificates in more than 60 areas of study. Many of these programs are available on a part-time, evening basis, and a growing number are offered via online learning.

In addition, the College of Applied Science and Technology offers five "executive leader" accelerated M.S. degree programs designed for practicing mid-level managers and executives. By combining summer sessions, online learning, independent study,

and credit for work experience and professional accomplishments, students are able to earn a master's degree in about 15 months.

For more information about these and other graduate programs at RIT, contact the RIT Office of Graduate Enrollment Services, 58 Lomb Memorial Drive, Rochester, N.Y. 14623; (585) 475-2229. Or, you can find out more by visiting the RIT Web site at [www.RIT.edu/grad](http://www.RIT.edu/grad).

This image shows the current condition of Vincent Van Gogh's 1890 oil painting, Daubigny's Garden.



**RIT imaging scientist Roy Berns reveals artworks as they were meant to be seen**

# True colors



Color measurements performed on the faded painting led to this digitized version of Daubigny's Garden, in which the ground and white flowers were recolored to simulate the original appearance.



**Color scientist Roy Berns knows a thing or two about Vincent Van Gogh's palette. He knows time has toyed with Van Gogh's materials and that the colors we see today are not always as the artist painted them.**

Pigments have lost their intensity, as in the faded ground in his 1890 painting, *Daubigny's Garden*. Other colors have all but disappeared.

Berns is giving the art world high-tech solutions to such conservation challenges. Berns doesn't restore the works themselves: He has developed technology that can create color-accurate reproductions for printing, publishing and for viewing on the Internet. Conservators can use the technology to detect forgeries and to optimize gallery lighting. It also can help determine if a painting's surface has been altered over time and show the affect of the cleaning.

Berns, the Richard S. Hunter professor at RIT's Munsell Color Science Laboratory in the Chester F. Carlson Center for Imaging Science, is teaming up with colleagues in the art world to create the next generation of imaging technology that will change how museums reproduce and archive artwork. Berns' system will be the first to document and reproduce artwork that matches the original under any light source. He envisions a practical system that will use off-the-shelf hardware combined with proprietary software, some patent pending.

The spectral-art-imaging project, now in its second year, was launched with grants of \$315,000 each from the National Gallery of Art in Washington, D.C., and The Museum of Modern Art in New York City. Berns recently won an additional four-year grant of \$874,000

from the Andrew W. Mellon Foundation, boosting project funding to \$2.3 million, including \$586,000 from RIT.

Berns' technique uses spectrophotometry, a process that measures wavelength and energy or intensity of light reflected from the surface of a painting. Data gathered by a spectral camera yields information about the physics and chemistry of a work of art.

Identifying the optical properties of materials, or an artwork's unique spectral fingerprint, will bypass some of the obstacles inherent in archiving art with digital technology.

While the most successful imaging systems currently used by museums mimic the human visual system,

Bern's research will record the optical properties of the paint. This is significant because color values change under different light sources due to the way the eye processes light.

"When we see color, we see integration," Berns explains. "Wavelength information gets combined into three signals — red, green and blue. With digital photography you get color information, not information about spectral data, because

the camera is working in the same ways as the human eye."

By using spectral data, it is possible to calculate an object's color precisely.

"This technique will make it possible to measure the color of a work of art rather than simply estimate it, as is done with film and even the most sophisticated digital cameras in use today," says Jim Coddington, chief conservator at The Museum of Modern Art. "This increased color accuracy will open up significant new avenues of research for museum

curators, conservators and art scholars."

Berns believes there may be commercial applications as well.

"I am very excited about this work," says Berns. "I first envisioned such a project in 1988 and made a pitch to several imaging companies. Although each was intrigued, the leap to commercial

application was just too great. Today it is clear that visible spectrum imaging provides many advantages over conventional digital photography, particularly for artwork. We plan to demonstrate the value-added of this approach. Who knows? This time around there may be a strong interest in commercialization."



**Roy Berns**

**For more information about Berns' research, visit [www.cis.rit.edu/people/faculty/berns/research.html](http://www.cis.rit.edu/people/faculty/berns/research.html).**



## **Star-Spangled Banner gets help from RIT**

As one of the nation's leading color scientists, Roy Berns was invited by the Smithsonian National Museum of American History to join the Star-Spangled Banner Preservation Project as a technical advisor.

Berns measured the flag's color properties using a portable reflection spectrophotometer and helped establish a measurement protocol for documenting color changes before and after cleaning. Measurements made by conservators at the Smithsonian during treatment are being used by Berns to simulate the appearance of the entire flag following cleaning.

Berns will use the virtually cleaned flag in his lighting simulation experiments. His goal is to help design lighting that prevents further damage while giving museumgoers the best visual experience.

The flag that inspired Francis Scott Key's famous poem and our national anthem is too delicate for ordinary display. "It's very, very fragile," Berns says. "People realize that preservation is the most important criterion."



# Gallery

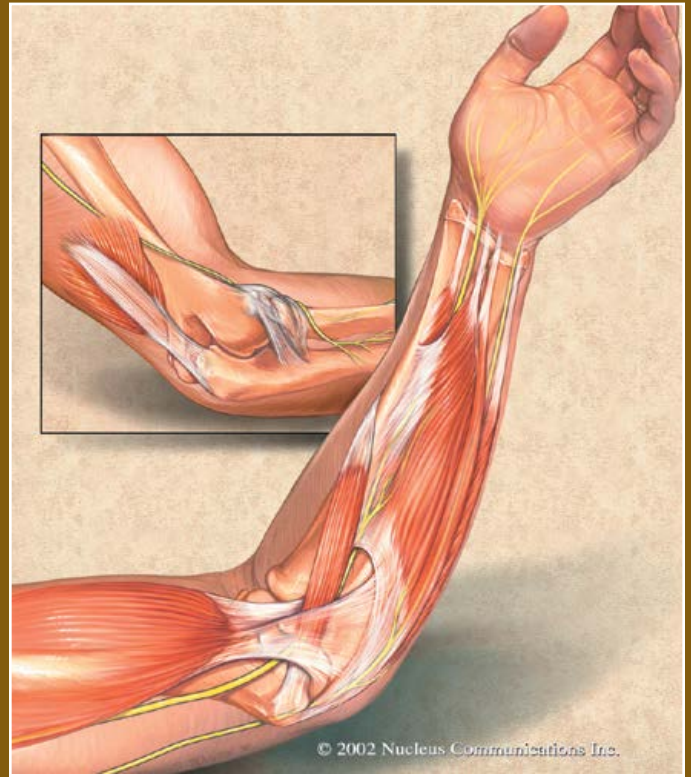
## Inner beauty

As you can see from these works by RIT alumni, medical illustrations can be interesting, informative, and beautiful.

“There’s a misconception that medical illustration is all about drawing anatomy,” explains Jim Perkins ’92 (M.F.A.), assistant professor of medical illustration. “Our illustrations also include biotechnology and molecular medicine – all of which is important to the functioning of the human body.”

Medical illustrations take a variety of forms ranging from highly detailed drawings in medical textbooks to computer animations. Graduates of the medical illustration program in the School of Art have gone on to careers with medical schools, hospitals and private companies.

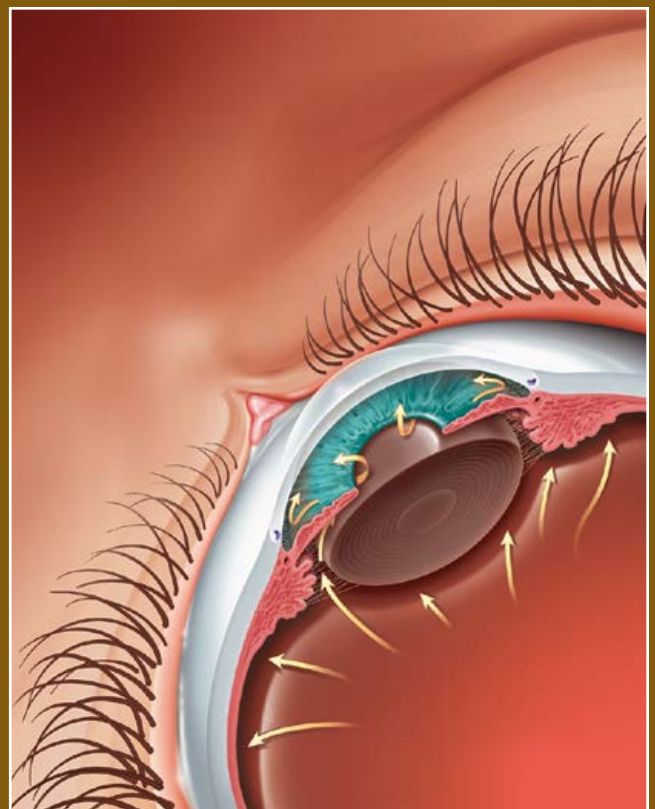
A recent show featuring the work of 20 alumni gave visitors insights into the broad spectrum of this field. The examples here were among the works displayed in the show at Gallery r, RIT’s art gallery in downtown Rochester.



“Elbow Anatomy” by Brian F. Wilson ’89

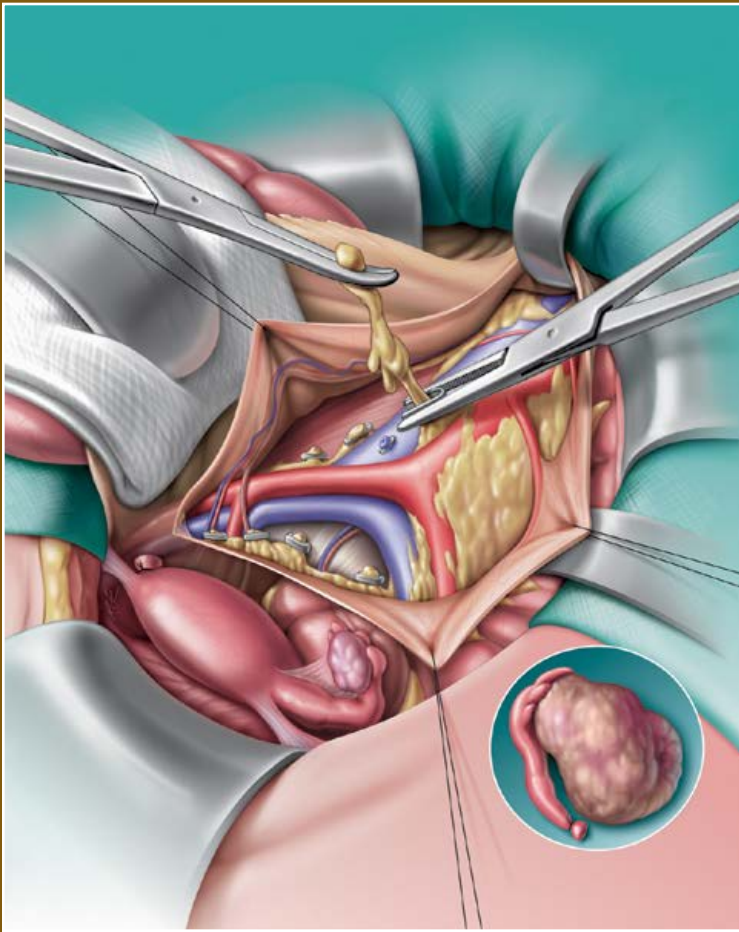


“Pediatric Positioning for Intubation”  
by Anne Olson ’91

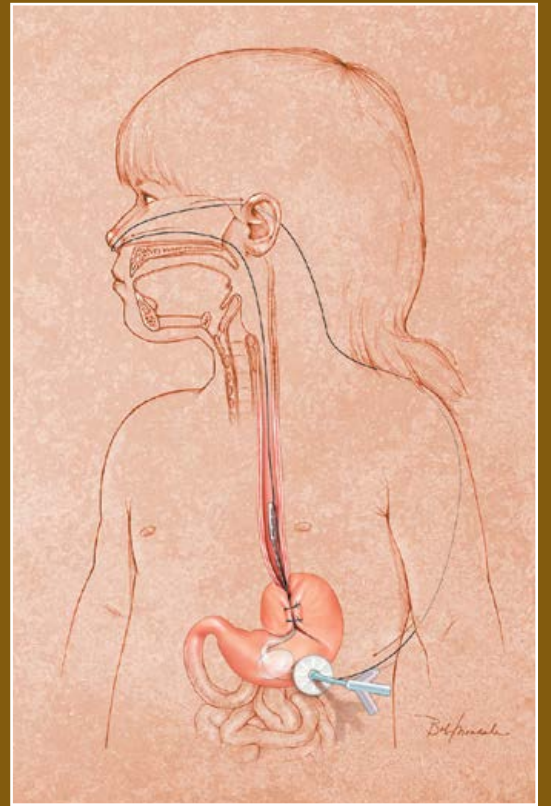


“Glaucoma” by Richard S. LaRocco ’93





"Disgerminoma" by Richard S. LaRocco '93



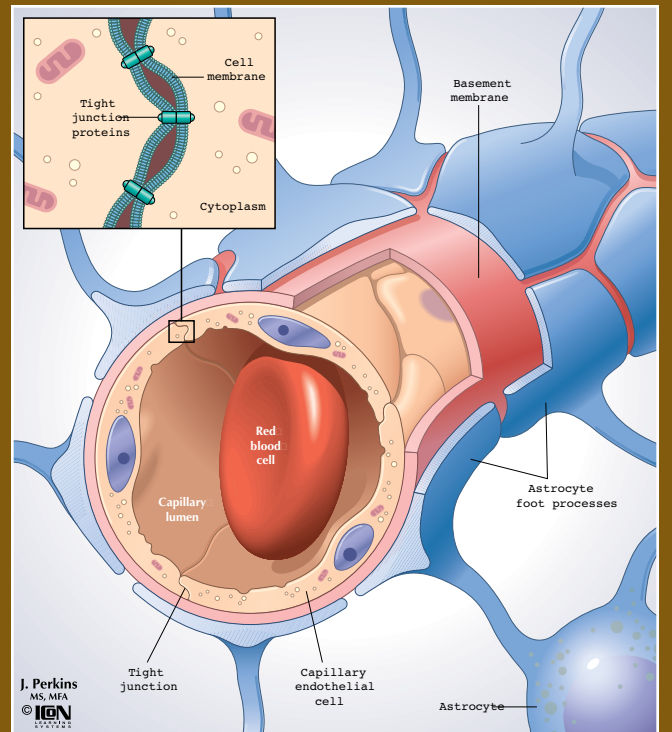
"Esophageal Catheterization" by Robert F. Morreale '93



"Proper Form for Holding the Violin"  
by Beth Jackelow '85



"Arthritic Hand" by Patricia Gast '85  
© 2000 Lippincott Williams & Wilkins



"The Blood-Brain Barrier" by Jim Perkins '92



# Connections

## Alumni Activities

Plan an alumni activity in your area! Call the Office of Alumni Relations toll-free at 1-866-RIT-ALUM and discover how easy and fun it is to host an alumni event.

### Alumni Admissions Volunteer Program

Thank you to the alumni who participated in this fall's Undergraduate Admissions Receptions. Prospective students and their parents enjoyed hearing the alumni perspective on RIT.

### Albany

The chapter will host a student-alumni event during the school break Nov. 25. Current RIT students in the Albany area will be invited to meet alumni in the region. This will be a good time of sharing RIT memories and stories! Thank you to alumni hosts **John '94** and **Laura '92 Comstock**.

### Boston

August was a busy month for the Boston Alumni Chapter. They sponsored a networking night at the Black Rose, which drew approximately 50 participants, and a whale-watching excursion for 25 people. The dedicated Boston Chapter leadership – **Pat Ward '97**, **Stephanie Murphy '96** and **Scotty Rill '95** – is planning the next series of activities. Stay tuned to the Web site ([www.rit.edu/alumni](http://www.rit.edu/alumni)) for the latest chapter information.

### Cleveland

**Al Teufen '73** is coordinating an event for alumni in the Cleveland, Ohio, area on Dec. 5. Keep your eye out for your invitation!

### Los Angeles

The L.A. Chapter attended a Lakers game on Oct. 25.

### New York City

Thanks to **Amy Sunstrom '95** and **Jennifer Zausmer '93**, plans are underway for the next networking event. The last networking event these two planned drew more than 130 alumni, so be sure to look for your invitation or check the Web site ([www.rit.edu/alumni](http://www.rit.edu/alumni)) for this fun event!



Alumni in New York City enjoying a networking event at City Hall Restaurant.



## Class Notes

### BUSINESS

**Deborah Segall '71** is a coordinator for the Finger Lakes Developmental Disabilities Service Office, Rochester.

**Cary Brairton '72** is a corporate pricing director for Eber Bros. Wine & Liquor Corp., Rochester.

**William Lukaszonas '72** is a general manager for Thomas Creek Ice Arena, Fairport, N.Y.

**Phillip Cooke '75** is a managing partner for Telesis Partners, Saint Louis, Mo.

**Charles Olah '75** is a management consultant for Profitability/Productivity A, Hanover Township, Pa.

**Mary Dunay '76** is an accountant and auditor for BDO Seidman, LLP, W. Palm Beach, Fla.

**Michael Gross '76** is chief financial officer for Winlet Group LTD., New York.

**Cheryl Quackenbush Herbert '77** is a supply chain manager for Panasonic, Secaucus, N.J.

**William Barry '78** is an underwriting manager for Metropolitan Insurance, Utica, N.Y.

**James Hurny '78** is an assistant professor for RIT, Rochester.

**Gary Hunneyman '79** is director of tax and financial planning for Eagle Steward Ltd, Rochester.

**Cheryl Warvin Ainspan '81** is a teaching assistant-special education for Guilderland High School, Guilderland Center, N.Y.

**David Baum '82** is a regional sales manager and partner in Dark Dog America, Hollywood, Fla.

**Barbara Polidore '82** is an accountant and auditor for CardioMag Imaging, Inc., Schenectady, N.Y.

**Lorraine Kolupski Dinantonio '83** is an internet analyst for Linens 'n Things, Clifton, N.J.

**Victoria Vanni King '83, '82** is an office manager for Pilgrim IT, Louisville, Ky.



**Michael Dominiak '84** is an engineering manager for Harris Corp., Rochester.

**Ronald Hess '84** is a data retrieval analyst for the U.S. Air Force, Randolph AFB, Texas.

**Larry Randall '84** is a senior manager for Ultraviolet Devices Inc., Valencia, Calif.

**Charles Avena '85, '84** is director of deaf/deafened/hard of hearing at Connecticut Mental Health, New Haven, Conn.

**Catherine Kish '85** is owner of Viyaaa Power Yoga, Doylestown, Pa.

**Cathleen Novick Davidson '86, '84** is a certified public accountant for Mellon Financial, Pittsburgh, Pa.

**Sandra Marchand '87** is a payroll staff accountant for RIT, Rochester.

**Joanne Stuewe '87, '84** is an associate director for RIT, Rochester.

**Mark Pasch '88, '87 '84**, is president of Cross Patent Development & Services, Dacula, Ga.

**Lawrence Rocheleau '88** is a manager of business development for Avexxis Corp., Avon, Conn.

**Leah Redlitz McGaughey '89, '86, SVP '83** is a software designer and developer for Infinium Software, Hyannis, Mass.

**Craig Backus '90** is a business analyst for Dynatek, Inc., Livonia, Mich.

**Peter Beckary '90** is president of Beckary Communications, Inc., Intercourse, Pa.

**Heather Hyser McCarthy '90** is a quality consultant for Aetna Life & Casualty, Hartford, Conn.

**Edward Provost '90** is a group manager for Taylor Nelson Sofres Intersearch, Horsham, Pa.

**Matthew Bates '91** is a volunteer and program coordinator for Compeer, Inc., Rochester.

**Wallace Dalpan '91** is a systems analyst for Things Remembered, Cleveland, Ohio.

**Judith Munson Drake '91** is a human resources manager for the Town of Ithaca, N.Y.

**Jennifer Hoff Hilmey '91** is an accountant and auditor for Delaware North Companies, Buffalo, N.Y.

**William Stegner '91** is a senior professional services consultant for Telemate.Net Software, Atlanta, Ga.

**Carl Vesperman '91** is director of materials and management information services for Trident Manufacturing, Webster, N.Y.

**Debra Qualls '92** is a manager for Drake Beam Morin, Inc., Schaumburg, Ill.

**Geoffrey Taylor '92** is president of C3controls by Control Concepts, Beaver, Mass.

**Amy Larose Coryell '93** is a manager director for CNA, Chicago.

## Alumni Activities

### Philadelphia

More than 30 alumni and guests enjoyed a tour of the historic City Hall building on Sept. 26. Along with the private tour, a private reception in one of the mayor's rooms was held. Thank you to alumni host **Paul Brown '82 and '84**. Philadelphia alumni should start getting geared up for the hockey season as that annual alumni outing is coming up! Thank you to chapter leader **Aviva Dubrow '91** for her efforts.

### Phoenix

Phoenix alumni cheered on the 2001 World Champion Diamondbacks on Sept. 9. Thank you to chapter leader **Stacy Johnson '96** for coordinating this fun annual alumni event! Also, thanks to Stacy for stopping into the Alumni Relations Office while visiting Rochester. We enjoyed spending time with you!

### Rochester

The sold-out chapter excursion to see *Mamma Mia!* in Toronto was enjoyed by alumni and guests on Sept. 22. The Rochester Chapter planning meeting held Sept. 19 worked on the chapter's 2003 event schedule, which will be released via mail and on the Web site ([www.rit.edu/alumni](http://www.rit.edu/alumni)) shortly. Thank you to the chapter leader **Bill Prentice '99** for his efforts.

### San Antonio

**Scott Saldinger '91**, chapter leader, is working on a networking event for alumni in San Antonio. Event information will be soon available on the Web site at [www.rit.edu/alumni](http://www.rit.edu/alumni).

### San Diego

The San Diego Chapter Leadership – **Richard Prenoveau '78, Louis Semon '72, Micki Hafner '92, Pamela Wick '94 and Phil Ohme '92** – coordinated a tour of Birch Aquarium for Nov. 10. A brunch preceeded the tank-by-tank tour for alumni and guests. Be sure to check the Web site ([www.rit.edu/alumni](http://www.rit.edu/alumni)) and your mailbox for the event information. Thank you for coming by the Alumni Relations Office, Rick, while in Rochester this summer!

### Seattle

**Mike Woods '92** coordinated two successful events recently. Alumni and friends enjoyed hiking Rattlesnake Lake Ledge Trail in North Bend, Wash., and an outing to see the Mariners play the Angels. Thank you, Mike, for your dedication, and for visiting the Alumni Relations Office while in Rochester. It was great to see you!

### Syracuse

Get ready Syracuse alumni for the Nov. 30 football game at the Carrier Dome. Thank you to chapter leader **Michael Sciotti '88** for his loyalty in coordinating this annual sporting event.



Washington, D.C., alumni at a wine-tasting dinner at Clyde's of Tyson's Corner.

### Washington, D.C.

Alumni in Washington, D.C., helped their community by volunteering at two Redskins events in August. Thank you to chapter leader **Vicky Decker '93** for making these opportunities available to alumni.

### Would you like to get involved?

If you have an idea for an alumni activity in one of these regions or another, call the Office of Alumni Relations toll-free at 1-866-RIT-ALUM or e-mail us at [alumni@mail.rit.edu](mailto:alumni@mail.rit.edu). We would love to hear from you!

# Alumni Highlights

## Gale Gand '81: sweet success

As a fine arts major, Gale Gand '81 studied metal sculpting and specialized in silver and goldsmithing. But she's earned critical acclaim in a different field of art. Gand has carved a stellar career as a pastry chef.

As co-owner of Tru, a top-rated Chicago restaurant, Gand has a high-profile showcase for her work. The co-author of three cookbooks with two more in the works, she reaches an even bigger audience through her show, *Sweet Dreams*, which airs Monday through Saturday on the cable television Food Network.



Gale Gand

Gand began her career in the kitchen during her college years. As an art student at the Cleveland Institute of Art, she attended a guest lecture by metal artist Albert Paley and was so impressed that she followed him to RIT. But changing schools caused a year-long interruption in her studies, and she went to work in the restaurant business and traveled and dined in France for the first time.

After receiving her degree from RIT, she set up a studio, but, she says, "It became clear to everybody that my passion for cooking was greater than my passion for fine art." For a time she did both, but ultimately the kitchen consumed her. At the Strathallan, a Rochester hotel, she met her mentor, chef Greg Broman, and her future business partner, Rick Tramonto.

"All my love of visual arts transferred into food," she says. She understood that food – especially desserts – should look as wonderful as they taste, and her art training proved to be excellent preparation. "It's really all the same – understanding design, composition, line, color, balance."

In 1985, Gand and Tramonto went to work at the Gotham Bar & Grill in New York City, where her desserts received three stars from *The New York Times*. They spent three years in charge of cuisine at Stapleford Park hotel outside London, and earned acclaim from critics. Back in Gand's hometown, Chicago, they operated three restaurants – Trio, Brasserie T and the Vanilla Bean Bakery – before teaming up with restaurant impresario Rich Melman on Tru. Melman, founder of Lettuce Entertain You Enterprises Inc., helped Gand and Tramonto build their dream restaurant. Since opening night in 1999, the rave reviews have poured in – from *Food Arts* magazine, *The New York Times*, *USA Today*, and *International Herald Tribune* as well as the Chicago press. Last year, Gand won the *Dolce Outstanding Pastry Chef Award* at the annual James Beard Awards.

Gand's TV career began with guest appearances on *Sara's Secrets*, the popular Food Network show hosted by Sara Moulton, executive editor of *Gourmet* magazine. Gand was stunned when she was offered a show of her own. "There are thousands of people who would love to do this," she knows. "But it's the story of my life: Things just fall in my lap."

It's not quite that easy, of course. Gand juggles a schedule that includes traveling to New York City to tape TV shows, writing cookbooks, producing her own root beer, managing a staff of six in the restaurant pastry kitchen, and raising a 6-year-old son, Giorgio. She continues to find the work deeply satisfying.

"There's a strange sort of communion in what I do," she explains. "The power of food to connect people is so strong. At the restaurant, people choose us to celebrate special moments, anniversaries, getting engaged – things they'll always remember. It's such a privilege, and we take that very seriously."

For more about Gand and her work, visit the Web at [www.foodtv.com](http://www.foodtv.com) or [www.trurestaurant.com](http://www.trurestaurant.com).

**Richard Kehl '93** is an accountant and auditor for McGladrey & Pullen, Bethesda, Md.

**Evan Sandt '93** is a project manager for Educators Health Partners, Lancaster, Pa.

**Florence Harucki Vance '93, SVP '88** is a graduate student majoring in vocational rehabilitation counseling at the University of Alabama, Birmingham, Ala.

**Jae Wu Berlik '94** is a senior project manager for Fannie Mae, Herndon, Va.

**Kimberly Lipke '94** is a controller for Central New York Medical Group Management, Liverpool, N.Y.

**Murat Tanyeri '95, '94** is chief financial officer for INNOVA IT Solutions, Istanbul, Turkey.

**Brian Miller '96** is a project manager for iBasis, Inc., Burlington, Mass.

**Melissa Adamo '97, '95, SVP '91** is a senior programmer analyst for the University of Iowa, Iowa City.

**John Dobra '97** is a principal consultant for Pricewaterhouse Coopers Consulting, Rochester.

**Paul Drake '97** is a materials analyst for Square D Co., Knightdale, N.C.

**Ramnath Gowrisankaran '97** is a senior financial analyst for M&T Bank Corp., Buffalo, N.Y.

**Robert Rice '97, '94** is a managing partner for BayFirst Solutions LLC, Washington, D.C.

**Xun Zhang '97** is an associate bank officer for J.P. Morgan Chase, New York.

**John Flannery '98** is an advanced systems engineer for Senior Database Consultants, Rochester.

**Joshua Katinger '99** is an account manager for SDG Corp., Norwalk, Conn.

**Mark Malone '99, '99** is a web applications developer for Shenandoah University, Winchester, Va.

**Victoria Pacheco '99** is a vice president for JPMorgan Chase, Rochester.

**Steven Torok '99, '98** is a system analyst for Phillips, Stuttgart, Germany.

**Andrea Miers '00** is director of marketing for AreteCapital Group, Manchester, N.H.

**Michelle Munro '00, '99** is a fund accountant for JP Morgan Chase Bank, Rochester.

**Scott Plummer '00** is a public accountant for Downey & Co., LLP, Braintree, Mass.

**Eric Wiley '00, '99** is a senior financial analyst for International Paper, Montvale, N.J.

**Jeffrey Fasoldt '01** is a finance director for The Sutherland Group, Ltd., Pittsford, N.Y.

**Patricia Hill '01, '92** is a technical support manager for Kayex (a division of SPX), Rochester.

**Michael Johnson '02** is webmaster for St. John Fisher College, Rochester.



## APPLIED SCIENCE AND TECHNOLOGY

**Angelo Arcoleano '76** is a senior project controls engineer for Eastman Kodak Company, Rochester.

**Timothy Manley '76** is president of Benchmark Consulting Engineering & Surveyors, Norristown, Pa.

**Wendy Whitman Gall '77** is a school teacher for Timothy Christian School, Piscataway, N.J.

**Charles Ferlicca Johnstone '77, '76** is a senior audiovisual specialist for NTID at RIT, Rochester.

**Peter Salvatori '77** is an electrical engineer for IBM Corp., Essex Junction, Vt.

**William Stiewe '77** is an electrical engineer and energy systems developer for Rochester Gas & Electric, Rochester.

**David Boyer '78** is owner of Color Visions Cartooning & Photography, Rochester.

**Randy Gibbon '78** is a director for the Chenango County Department of Public Works, Norwich, N.Y.

**Eugene Rusiecki '78, '75, SVP '71** is a member of the technical staff for OFS Fitel, Norcross, Ga.

**Barbara Binion '79** is a software designer and developer in Fort Worth, Texas.

**Christopher Coolican '79** is a senior product engineer for Visteon Corp., Newport News, Va.

**Amedeo Qualich '79** is an academic advisor for RIT, Rochester.

**Thomas Dodson '80** is a principal engineer of reliability and maintainability for Sperry Marine, Charlottesville, Va.

**Richard Galkowski '80** is a senior staff systems engineer for Lockheed Martin Corp., Syracuse, N.Y.

**Sandra Leininger Whittaker '80, '77** is a software technical director for ARINC Inc., South Coast Metro, Calif.

**Douglas Eichhorn '81** is a senior business application developer for NJR Service Corp., Wall, N.J.

**Martin McClelland '81** is a manager for Proctor & Gamble Co., Cincinnati, Ohio.

**Howard Delano '82** is a design engineer for Stainless Design Concepts, Inc., Saugerties, N.Y.

**Michael Feldman '82** is director of software for Wavesmith Networks, Inc., Acton, Mass.

**Sharon Chesson Cochran '83** is a principal packaging engineer for Tropicana, Bradenton, Fla.

**Gary Rubin '83** is a systems analyst and engineering manager for Northeast Utilities Service Co., Hartford, Conn.

**Howard Simonson '83** is a senior computer scientist for Adobe Systems Inc., San Jose, Calif.

**Stephen Gibson '84** is a consultant for Paxonix, Inc., Parsippany, N.J.

**William Lewis '84** is director of engineering for Guest Supply Inc., Monmouth Junction, N.J.

**Thomas Mihevc '84** is director of information technology for Mohawk Valley Community College, Utica, N.Y.

**Jean Cobb Stout '84** is a delivery manager for IBM Corp., Endicott, N.Y.

**D. Rick Adams '85** is a software engineer IV for Cisco Systems, Research Triangle Park, N.C.

**Thomas Bridgman '85** is an advisory software engineer for IBM Research, Yorktown Height, N.Y.

**James Casper '85, '83** is a consulting information technology specialist for IBM Corp., Angier, N.C.

**Barbara Frankiewicz '85** is a project manager for Nussbaumer & Clark, Inc., Buffalo, N.Y.

**Ronald Kilcarr '85** is a project engineer for Best Climate Control Corp., Bohamia, N.Y.

**Jeffrey Jones '86** is leader of marketing and business development for Mantas, Inc., Fairfax, Va.

**Robin Tobin '86** is a senior manager for Adobe Systems Inc., Burlington, Mass.

**Michael Bartucca '87** is an interactive media designer and developer for Extreme Interactive, Inc., Cohasset, Mass.

**Peter Baust '87** is a senior program manager for Adobe Systems, San Jose, Calif.

**Robert Folaron '87** is chief executive officer for Virtual Dialog, Inc., Plano, Texas

**John Foley '87** is an application development manager for Fleet Boston Financial, Johnston, R.I.

**Edward Cary '88** is a project manager for Delphi, Rochester.

**James Haas '88** is manager of global graphics for Bausch & Lomb Inc., Rochester.

**John Marcucci '88** is an emergency medicine physician for UT Southwestern Medical Center, Dallas, Texas.

**Tyrone Powe '88** is a quality engineering manager for Detroit Chassis LLC, Detroit, Mich.

**James Beveridge '89** is a software designer and developer for Connected Software, Inc., West Newbury, Mass.

**David Eaton '89** is a senior training analyst for TECO Group, Lockport, N.Y.

**Robert Giardino '89** is regional director of hotel performance support for the Hilton Hotel Corp., Memphis, Tenn.

**Irianto Safari '89** is a senior engineer for CSI & Associates, Singapore.

**John Broderick '90** is a systems analyst for Fedex Ground, Moon Township, Pa.

**Dan Cunneen '91** is a national sales manager for Sensormatic-ADT Retail, Waldwick, N.J.

**Timothy Kirkland '91** is director of engineering and quality assurance for Tuthill Pneumatics Group, Springfield, Mo.

**Stephen Salvatore '91** is a district superintendent for Teichert Construction Co., Stockton, Calif.

**Jeffrey Bater '92** is a customer service manager for Pitney Bowes Management Services, Rochester.

**Julie Humzek Bennett '92** is a meeting planner for Paychex Inc., Rochester.

**Patrick O'Shaughnessy '93, '88** is a program manager for Eastman Kodak Company, Rochester.

**Ian Ratner '93** is a software engineer consultant for Fidelity Investments, Boston, Mass.

**Todd Bulak '94** is a design engineer for Morgan Construction Co., Worcester, Mass.

**Samuel Gramet '94** is a HVAC/plumbing engineer for Beardsley Design Associates, Auburn, N.Y.

**Daniel Augustyn '95** is a packaging engineer for Deputy Acromed, Raynham, Mass.

**James Robinson '95, '94** is a senior software engineer for Sierra Research, Integrated Defense Technologies, Buffalo, N.Y.

**Gary Volo '95** is a product manager for Eastman Kodak Company, Rochester.

**Kathy Zgonce-Poore '95** is a registered dietitian for Unity Health, Rochester.

**Jeffrey Avrin '96, SVP '90** is a teacher of the deaf at Marie H. Katzenbach School for the Deaf, Trenton, N.J. and is an emergency medical technician for the local First Aid and Rescue Squad, Middletown, N.J.

**Robert Button '96** is a research and development project engineer for Maytag, Cleveland, Tenn.

**Darrell Herbst '96**, is a senior applications software engineer for Lockheed Martin, Air Traffic Management, Rockville, Md.

**John Bates '97** is a project engineer for Transact Technologies Inc., Ithaca, N.Y.

**Kimberly Brooks '97** is an environmental specialist II for the Florida Department of Environmental Protection, Tampa, Fla.

**Sheetal Deshmukh '97** is an information technology project manager for IBM Corp., Boston, Mass.

**Kevin Loo '97** is an e-learning consultant for Allen Interactions, Inc., Tampa Fla.

**Deborah Piccirilli-Schauseil '97** is chief operating officer for Lifetime Health, Rochester.

**Jason Staly '97** is a mechanical engineer for Rockwell Automation-Allen Bradley, Chelmsford, Mass.

**Susan Westcott-Louis '97, '95, '94** is a medical policy coordinator for Excellus Inc., Rochester.

**Robert Bachman '98, '86**, is a software engineer for Intercept Technology, Atlanta, Ga.

**Noel Cain '98, SVP '92** is a reservationist for the Catamaran Resort Hotel, Corporate Marketing, San Diego, Calif.

**Rachel Doucette '98, '96** is a clinical nutrition manager for Hallmark Health/Sodexo, Melrose, Mass.

**Cyron Kay '98** is a design engineer for General Electric Power Systems, Schenectady, N.Y.

**Donald Mahnken '98** is a design engineer for KBA North America, York, Pa.

**Mark Rissberger '98** is a systems consultant for Xelus, Inc., Fairport, N.Y.

**Yu-I Tseng '98** is a software engineer for Informatica Corp., Redwood City, Calif.

**Kevin Russell '99** is a project support engineer for Royal and SunAlliance, Charlotte, N.C.

**Patricia Sapere '99, '84** is a research associate for RIT, Rochester.

**Scott Watson '99** is a systems analyst for General Data Systems, Bethesda, Md.

**Julie Briggs '00** is director of human resources for Alfred State College, Alfred, N.Y.

**Jason Cote '00** is a network specialist for St. Paul's School, Concord, N.H.

**Natalie Hawryschuk '00, '97, '95** is an internet coordinator and web/graphics designer for Coats and Clark North America, Charlotte, N.C.

**Harold Morrow '00** is a global network design engineer for Eastman Kodak Company, Rochester.

**Judy Northrup '00, '93** is a graphic designer for Eastman Kodak Company, Rochester.

**Mary Ve Rost '00** is a manager for KPMG Consulting, Inc., McLean, Va.

**Mathew Walker '00** is a facility engineer and CADD administrator for Agere Systems, Breinigsville, Pa.

**Herman Allister '01** is an applications engineer for INVENSYS, Tonawanda, N.Y.

**Gregg Chalmers** has been elected as the newest member of the Eastern Seals New York-Western Region's Operational Board of Directors. He is also vice president of operations for Siewert Equipment Co.

**Jonathan David '01** is a senior business systems analyst for Medtronic Physio-Control Corp., Redmond, Wash.

**Paul Gomez '01** is a network and systems administrator for Audible Inc., Wayne, N.J.

# Alumni Highlights

## Rockefeller fellow



**John Rodriguez '83** (photography) has been named a fellow of the Rockefeller Foundation's Next Generation Leadership program. The program was created in 1997 to build a network of leaders who collaborate to help devise innovative, community-based solutions to many of today's challenges.

Each year, a nominating committee appointed by the foundation selects fellows who represent a cross-section of professions and communities in the United States. Rodriguez is among 25 cohorts in the most recent group. During the two-year fellowship, the group will participate in sessions focusing on issues of race, citizenship, immigration, globalization, and the role of the media and information technology in a democratic society.

For more than two decades Rodriguez has worked on Latino political, economic and advocacy issues in Rochester and Monroe County. He is a co-founder and past president of the Rochester Hispanic Business Association and current chairman of the Latino Advocacy Coalition of Western New York.

After some 20 years in marketing, advertising and communications, Rodriguez made a career shift into the field of organizational development and now works with The Kaleel Jamison Consulting Group Inc. of Troy, N.Y. The company assists private and public organizations in building inclusion and leveraging diversity to benefit people, organizations and communities.

"Our company works with organizations all over the country," says Rodriguez, who joined KJCG in 2000. "It's absolutely interesting work, and incredibly meaningful."

## Johnson wins teaching award



**Joan Johnson '82** (MBA) and '76 (hospitality management) received the SUNY Morrisville Distinguished Faculty Award in May.

Johnson, who holds a Ph.D. from Syracuse University, is a professor and curriculum coordinator in the School of Business/Hospitality Department at Morrisville. She joined the faculty there in 1981 and is founder and advisor of the

Morrisville chapter of the International Food Service Executives Association.

Among her career honors, Johnson received the Award for Excellence in Teaching from the National Institute for Staff and Organizational Development in 1996.

## Keeping watch by sea

Navy Cmdr. **Sheldon Stuchell '89** (business administration) of Spencerport, N.Y., is in charge of coastal security at the U.S. Naval Base, Guantanamo Bay, Cuba.

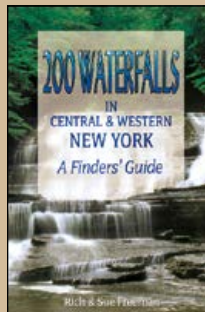
Stuchell, a 21-year Navy reservist who was a software

manufacturer's representative before being called to active duty in June, was the subject of a feature article in the Rochester *Democrat and Chronicle* in August. He is commanding officer for 90 Navy personnel who are part of the military task force that oversees captured Taliban and al-Qaeda fighters. He expects to complete his deployment in late December.

Stuchell and his troops patrol a 3-square mile zone of ocean as well as defensive measures on land around the base.

"You get down here and you realize how important the mission is," Stuchell told the newspaper. "It's all about Sept. 11 and being able to stop these terrorists."

## Falling for New York



**Rich Freeman '77** (A.A.S.) and **Sue Freeman '86** (MBA) added a seventh volume to their series of guidebooks on outdoor recreation in New York state. The latest, *200 Waterfalls in Central and Western New York* (Footprint Press), visits cascades that can be reached by car, via a short walk, or by a challenging hike. Besides maps that give the location of each waterfall, the book explains when and where to go for best viewing.

The husband-and-wife team's previous books include two versions of *Take a Hike!* and *Take Your Bike!* (Rochester and Finger Lakes editions), and *Snow Trails*.

For more information, call 800-431-1579 or visit the Web site at [www.footprintpress.com](http://www.footprintpress.com).

## A good showing

After a long career in photography, **George R. Brakenridge '48** (photography) of Michigan City, Ind., is receiving recognition for his work in a different medium.

Brakenridge now creates what he calls "arty art" – three-



**George Brakenridge '48**

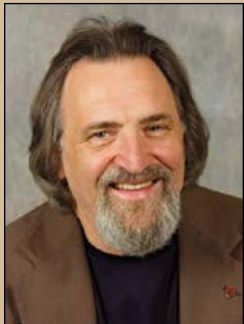


dimensional abstract works. Last year, his first effort was one of 76 pieces accepted from 477 entries in the 58th Annual Salon Show of the Northern Indiana Arts Association in Munster, Ind. The work, titled "The Laws of Life," was awarded the Orval O. and Margaret Haag Memorial Award. Another work was selected for this year's show.

During his career, Brakenridge was a staff photographer in the catalog studios for Sears Roebuck in Chicago, did medical photography at the University of Chicago, and worked for a busy commercial studio in the Windy City.

A World War II Bronze Star recipient, Brakenridge now works part-time as a photographer and assists with exhibition installation at the John G. Blank Center for the Arts in Michigan City.

### Rosa named to national board



**Eugene Rosa '67** (business administration) is serving on the Board on Radioactive Waste Management of the National Academies. Established in 1958, the BRWM is principally concerned with the safe and responsible management of radioactive wastes.

Rosa, is the Edward R. Meyer Distinguished Professor of Natural Resource and Environmental Policy, professor

of sociology, affiliated professor of environmental science, and affiliated professor of fine arts at Washington State University. He received a master's degree and Ph.D. in social sciences from Syracuse University and completed postgraduate work in neurobiobehavioral sciences and in energy studies at Stanford University before joining the faculty at WSU in 1978. For more than two decades, his research has focused on environmental topics – particularly energy, technology, and risk issues – with attention to both theoretical and policy concerns. An internationally recognized expert on public responses to nuclear and other risks, he is widely published and has presented lectures and seminars in the U.S. and abroad.

The 16 members of the Board on Radioactive Waste Management meet three times a year in Washington, D.C. The board advises decision makers on all aspects of radioactive waste management and often deals with sensitive issues such as the creation of the nation's first permanent nuclear waste repository in Nevada.

"It's particularly challenging," says Rosa, "to be in a position where decisions have such high consequences. But it's also a tremendous opportunity to be directly involved in finding better solutions to these important policy and national management issues."

Information for Alumni Highlights may be submitted to **Kathy Lindsley, University News Services, RIT, 132 Lomb Memorial Drive - Bldg. 86, Rochester, NY 14623, or via e-mail to [kjlcom@rit.edu](mailto:kjlcom@rit.edu).**

**Susan Leach '01** is a document controller for Featherlite Luxury Coaches, Sanford, Fla.

**Matthew Petrangelo '01** is a field engineer for Hensel Phelps Construction Co., Alexandria, Va.

**Thomas Rohatsch '01** is a controls engineer for Alliance Automation Systems, Rochester.

**Jacob Smith '01** is a telecommunications technician for GlobalSat Communications, Laurel, Md.

**Lisa True '01**, is a communications analyst for Engineering Management and Integration, Herndon, Va.

**Sharon Griffith '02** is a controller for National Church Residences, Columbus, Ohio.

### IMAGING ARTS and SCIENCES

**Jennifer Donovan '94** is a multimedia/print project manager for The Yacobian Group LLC, Maynard, Mass.

**Suzanne DeFreitas Kirkman '94** is a graphic manager for Standard Packaging & Printing, Mt. Gilead, N.C.

**Troy McBride '94, '91** is an assistant professor of physics and engineering for Elizabethtown College, Elizabethtown, Pa.

**Robert Nichols '94, '93** is a printing manager for the State University of New York, Syracuse, N.Y.

**Joseph Sirianni '94, '92, '91** is a senior image scientist for Eastman Kodak Company, Rochester.

**Christy Wasserman '94** is a senior electronics lab specialist for IBM Corp., Hopewell Junction, N.Y.

**Renee Zborowski '94** is a production manager for Bebeer Silverstein Advertising, Miami, Fla.

**Edward Cass '95** is a visual masseur for Creative Works, Nashville, Tenn.

**Samantha Minor '95** is a graphic designer for WebMD, New York.

**Nina Selzer-Bellomio '95** is a design director for Project Yangtze, Boston.

**Ricardo Toledo-Crow '95** is a research engineering lab manager for Memorial Sloan-Kettering Cancer Center, New York.

**Fabiola Parent Anderson '96** is an industrial designer for Finline Prototyping, Raleigh, N.C.

**Eric Oberg '96**, is creative director for The Push Group, Reston, Va.

**John Pironi '96** is a principal enterprise solutions architect for Genuity, Inc., Burlington, Mass.

**Peggy Wong '96** is deputy art director for Martha Steward Living Omnimedia, New York.

**Laura Burns '97** is a senior manufacturing coordinator for Course Technology, Boston.

**Warren Chase '97** is vice president of design for Digital Eye, LLC, Wilmington, Del.

**Young Cho '97, '96, SVP '88** is a CAD operator at Butt Otruba-O'Connor Architects, Roslyn, N.Y.

**Terry Erisman '97** is an information resource specialist for The University of Kansas, Kansas City, Kan.

**Pannayiota Guigley '97** is a 4th grade teacher for the International Academy of Columbus, Columbus, Ohio.

**Kevin Levick '97** is a designer and printer for Graphic Service Bureau, Manhatten, N.Y.

**Shelley Oishi '97, '96, SVP '92** is a job developer for Pacific Vocational Services, Salem, Ore. She will be a graduate student at Western Oregon University starting fall 2002.

**Michael Shavaliar '97** is an art director for Newtimes Inc., Fort Lauderdale, Fla.

**Kristina D'Hondt '98** is a marketing design specialist and production coordinator for Manning & Napier Advisors, Inc., Rochester.

**Jennifer Doeschner '98, '97** is an art teacher for Hewlett Woodmere School District #14, Hewlett, N.Y.

**Samuel Rondinelli '98** is a site manager for R.R. Donnelley and Sons, Financial Division, Philadelphia, Pa.

**Mui Shokouhi '98, '95, SVP '91** is a digital graphics specialist for the U.S. Dept. of Defense Education Activity, Arlington, Va.

**Kristy Swanson '98** is a business agent for ASIL, Rochester.

**Tracy Gilbert '99, '98, '96** is an arts and literacy specialist for Wilson Commencement Park, Rochester.

**Chiharu Nakatani '99** is a system/software engineer assistant for Mobilephone Telecommunications International LTD, Tokyo, Japan.

**Heather Nicholas Roman '99** is a pre-production coordinator for John Myers Photography, Rochester.

**Timothy White '99** is a technician and photographer for Fotografix, Clinton, Conn.

**Sergio De Oliveira '00** is a furniture designer for Bush Industries, Jamestown, N.Y.

**Kimberlee De Puy '00** is a multimedia and interactive developer for iMage 500 Inc., Salisbury, N.C.

**Megan Dey '00, '99** is an associate editor for Hachette Filipacchi Media US, New York.

**Athena Lakis '00** is an art director and multimedia designer for Promethean, LLC, Fishkill, N.Y.

**Steven Rosadini '00** is a customer service executive for L.P. Thebault Co., Parsippany, N.J.

**Eliot Harper '01** is a technical pre-release program manager for Adobe Systems Inc., Seattle, Wash.

**Brett Larson '01**, is a self-employed furniture designer and craftsman in Auburndale, Mass.

**Kerry Robarge '01** is teaching children orphaned by HIV for the Peace Corps, Kenya.

**Freddy Tejada '01** is a graphic designer for Marsh Bio Products, Rochester.

**Andrien Trujillo '01** is a studio manager for KSC Studio, Ft. Lauderdale, Fla.

**Lawrence Voigtsberger '01** is a graphic designer for LMW Design, Inc., Rutland, Vt.

**Elizabeth Powell '02** is a digital artist for Norton Photography, Cincinnati, Ohio.

## CONTINUING EDUCATION

**Gary Vanbortel '70** is an accountant and auditor for Silver Club Hotel and Casino, Sparks, Nev.

**Gary Gotham '72** is a software designer and developer for Gary P. Gotham Consulting, Inc., Ft. Collins, Colo.

**Carmen Allocco '75** is a technical specialist and project manager for Xerox Corp., Webster, N.Y.

**Elizabeth Brown '77** is owner of Advance To Go, Rochester.

**Thomas Tuke '77** is president of the Charles H. Tuke Agency, Inc., Rochester.

**Charles Clark '80** is a compensation manager for Johnson & Johnson, Rochester.

**Norman Kraft '80** is owner and engineer for NES, Rochester.

**Climyete Spotford '83** is a computer programmer/analyst for the Rochester Psychiatric Center, Rochester, N.Y.

**Cliff Grinnell '90** is southeast regional manager for Enovation (Fuji Film), Alexander City, Ala.

**Barbara Sherman Cutrona '92, '88, '79** is vice president of The IMC, Rochester.

**Patricia Smith Murphy '92**, is an office manager for Surgical Associates of Conway (Ark.).

**Analisa Dominic-Emrich '93** is director of product development for Broadview Networks, Newark, N.J.

**Katherine Kaiser '93** is an office manager for Rochester Tooling and Machine Assoc., Rochester.

**Jennifer Birach '95** is an environmental representative for Ford Motor Co., Woodlawn, N.Y.

**Thomas Sousa '95** is a music teacher for the Wayne Central School District, Ontario Center, N.Y.

**Laura Zimmerman '96** is a financial advisor for UBS Paine Webber, Aventura, Fla.

## ENGINEERING

**Francis Perry '66** is director of engineering for Recognition Systems, Inc., Campbell, Ca.

**Carlton Warren '68** is a software engineer for ABB, Rochester.

**Gary Demske '70** is a senior engineer for Alcatel USA, Plano, Texas.

**Gary Isles '73** is a principal project engineer for Organichem, Rensselaer, N.Y.

**Robert Rotolo '74** is a senior mechanical engineer for Applied Mechanical Technology, Victor, N.Y.

**Peter Jones '77** is vice president and head mechanical engineer for W.H. Jones and Son Inc., Kenmore, N.Y.

**Robert Makowka '77** is a staff engineer for Lockheed Martin, Sunnyvale, Calif.

**Robert Farinelli '79**, is a middle school art teacher for Sweet Home Central School, Amherst, N.Y.

**Mark Emerson '80, '77** is an engineering manager for Vitesse Semiconductor, Salem, N.H.

**Peter Fellegara '82** is a development manager for Xerox Corp., Fairport, N.Y.

**Mark Manley '82, '79** is a senior industrial engineer for Eastman Kodak Company, Rochester.

**Thomas Newberry '82** is vice president of corporate communications for GTC Biotherapeutics, Inc., Farmingham, Mass.

**John Cahill '83** is vice president of BellSouth, Atlanta, Ga.

**Stephen Goyette '83** is a senior engineer for TUV Rheinland of North America, Newtown, Conn.

**Scott King '84** is a program manager for General Electric, Louisville, Ky.

**Robert Telban '84** is a research assistant and Ph.D. candidate at the State University of New York at Binghamton.

**Paul Bauersfeld '86** is an executive vice president for Sigma Design, New York.

**Kirk Witherow '86** is a senior member of the engineering staff for Lockheed Martin, Moorestown, N.J.

**Mark Lissner '87** is a senior field applications engineer for Integrated Device Technology, Westboro, Mass.

**Robert Appleby '88** is a partner with the lawfirm of Kirkland & Ellis, New York.

**David Cole '88** is a senior engineer for IBM Corp., Poughkeepsie, N.Y.

**John Gottman '88** is a financial advisor for Merrill Lynch, New York.

**Cavit Habib '88** is president for Proser A.S., Istanbul, Turkey.

**Michael Crowley '90** is a patent attorney for Burns, Doane, Sweker & Mathis, LLP, Research Triangle Park, N.C.



## You are invited to join the Ellingson Society

The Ellingson Society was established to recognize donors who make plans to contribute bequests, life income gifts, and other planned gifts to RIT. Planned gifts may be directed to anything across campus, including scholarships, special acquisitions, equipment purchases, endowment, and other vital campus needs.

For more information about joining, please call Bette Foster, Assistant Director of Planned Giving, RIT, 116 Lomb Memorial Drive, Rochester, NY 14623-5608, 585-475-6566 or toll free: 1-866-237-4008.

**Christopher Ludden '90, '83 '80** is a senior design engineering manager for National Semiconductor, Pittsford, N.Y.

**Steven Newton '91** is a design engineer for New York Air Brake Corp., Watertown, N.Y.

**Edward Shelmerdine '91** is an engineer for Ross Valve Manufacturing Co., Inc., Troy, N.Y.

**John Cuomo '92** is a sales engineer for Astro-Med, Roswell, Ga.

**Trent Markell '92** is a project engineer for R.W. Beck, Denver.

**Matthew Andersen '93** is a supply chain manager for General Electric, Atlanta, Ga.

**Craig Garvin '93** is a software designer and developer for KLA-Tencor, Austin, Texas.

**Yu-Liang Lin '93** is a fluid mechanics engineer for General Electric Global Research, Niskayuna, N.Y.

**Scot Martinelli '93** is a manufacturing engineer for Nuvasive, Inc., San Diego, Calif.

**Melissa Rancourt '93** is a director for the European Foundation for Quality Management, Brussels, Belgium.

**David Hunter '94, '87** is a principal RF engineer for Ultra Electronics—Flightline Systems, Victor, N.Y.

**Karen Strumlock '94** is director of resource performance for Lion Apparel, Dayton, Ohio.

**Vincent Wong '94, '93** is a software engineer for Agilent Technologies, Loveland, Colo.

**Daryl Cheney '95** is a senior software engineer for Eastman Kodak Company, Rochester.

**Angeliqe Altus '96** is a senior hardware engineer for Lockheed Martin NESS, Syracuse, N.Y.

**Scott Amplement '96** is a strategic marketing engineer for Analog Devices, San Jose, Calif.

**Julio Bonilla-Montalvo '96** is a corporate process control manager for Photonics, Brookfield, Conn.

**Jason Stoklosa '97** is a senior applications engineer for the Falkt Fan Group, Buffalo, N.Y.

**Steven Carr '98** is a corporate engineer for Adelphia Communications, Coudersport, Pa.

**Mathew Mitchell '98** is an operations analyst for Warner Brothers, Glendale, Calif.

**Ryan Rush '98** is a mechanical engineer for EDS, Rochester.

**Timothy Miller '00** is a field service engineer for Siemens Westinghouse, Richmond, Va.



## Adventure awaits alumni abroad

**Aaron Wells '01** is a project engineer for Pactiv, Canandaigua, N.Y.

**Jonathan Curry '02, '01** is a performance analysis engineer for Honeywell, Torrance, Calif.

**Jason Feltham '02** is a manufacturing engineer for Thermo Spectronic, Rochester.

**Adam Renzi '02**, is a mechanical engineer for Lockheed Martin, Kindls Atomic Power Lab, Schenectady, N.Y.

### FINE & APPLIED ARTS

**David Ramsay '52** is a new commandant of the Veteran Corps of Artillery for the State of New York.

**Joan Shakofsky Page '70** is a comptroller for Avon Products, Inc., Atlanta, Ga.

**Donn Meade '72** is a packaging engineer for Avery Dennison, Chicopee, Mass.

**Brian Rogers '75** is COO and marketing director for Labor Day Creative, Natick, Mass.

**Elton Pride '84** is manager of e-commerce for Toyota, Deerfield Beach, Fla.

**Constance Worth '85, '82** is an electronic prepress technician for Tidewater Publishing Corp., Centerville, Md.

**Chad Liszt '86** is a senior digital compositing artist for Beachwood Studios, Beachwood, Ohio.

**Lee Bartell Cullen '89** is a senior electronic production specialist for Houghton Mifflin Co./McDougal Littell, Boston, Mass.

**Janine Wentz '89** is a senior art director for Thomas Ferguson Associates, Parsippany, N.J.

**Jonathan Wentz '89** is a creative director for W Design, LLC, Whippany, N.J.

**Jose Froehlich '90** is a product concern analyst for Ford Motor Co., Allen Park, Mich.

**Timothy O'Donnell '91** is an art director for The Fin Co., New York.

**Samantha Chow '92** is a designer for Worldwide Dreams, New York.

**Scott Garvey '92** is an art director for Trees for Life, Wichita, Kan.

**Andrew Lopez '92** is an associate art director for MTVN, New York.

**Beth Thompson '92** is an account supervisor for J. Brown/LMC Group, Stamford, Conn.

**Stacey Smith Vandenburg '92** is an assistant registrar for The George Eastman House, Rochester.

**Michael Lamanna '93** is a product designer for Microsoft, Redmond, Wash.

**Karan McReynolds '93**, is a partner and creative director for Ariel Creative, Rockport, Me.



RIT alumni visited the Temple of Aphea on the island of Aegina as part of a trip to the Greek Islands and Athens Aug. 27-Sept. 8.

For more information, contact Barbara Carney, assistant director, at 585-475-2959, or by e-mail at bac3922@rit.edu.

The Office of Alumni Relations is offering alumni and friends the opportunity to participate in a number of overseas trips in 2003.

These include:

Trans-Panama Canal cruise, Feb. 1-12; Normandy, France, April 7-15; Dalmatian Coast cruise, May 6-14; Scotland, May 21-29; Sorrento, Italy, Sept. 11-19.

"The response to our travel program has been tremendous," says Kelly Redder, executive director of alumni relations. "The trips are a chance to connect with friends and share a special experience—and to touch base with our international alumni."

### GOLISANO COLLEGE OF COMPUTING AND INFORMATION SCIENCES

**Kyle Daving '01** is a network administrator for Saia Communications, Buffalo, N.Y.

**Christine Maglio '01, '98** is a software engineer for Xerox Corp., Webster, N.Y.

**Xiaobo Tang '01** is a technical leader for Corning (N.Y.) Inc.

**Dennis Vanill '01** is a development engineer for PaeTec Communications, Fairport, N.Y.

**Travis Beaver '02** is a software engineer for Harris RF Communications, Rochester.

**Patrick Francis '02** is vice president of technology and operations for The Markets.com, New York.

**Justin Lassiter '02** is a software engineer for NetSetGo, Inc., Rochester.

**Michael Richards '02** is a software engineer for PaeTec Communications, Inc., Fairport, N.Y.

**Kelley Sullivan '02** is a technical consultant for Cornell University, Ithaca, N.Y.

### GRAPHIC ARTS AND PHOTOGRAPHY

**Roger Collier '67** is director of publications for The College of Wooster, Wooster, Ohio.

**Philip Yoder '67** is president of ICOM Multimedia, Columbus, Ohio.

**Ken Chin '69** is director of the information technology laboratory, NYSTAR Center, for RIT, Rochester.

**Stephen Kelly '70** is a project manager for IBM Corp., West Chester, Ohio.

**Brian Nicholas '80, '70** is a security sales consultant for Appelton Papers, Centerville, Ohio.

**Ian Robertson '70** is a printer and designer for Slow Loris Press, Fairhope, Ala.

**Scott Sims '70** is owner of Scott's Photo, Rochester.

**James Morschhauser '71** is a teacher for the Erie School District, Erie, Pa.

**Keith Harvey '72** is supervisor of configuration and engineering performance for Wolf Creek Nuclear Operations Corp., Burlington, Kan.

**Janice Clark Rose '72** is a newspaper layout operator for *The Arizona Republic*, Phoenix, Ariz.

**Edward Amos '73** is a consultant for Perry Johnson, Inc., Southfield, Mich.

**David Pierson '73** is a plant manager for Motheral Printing Co., Fort Worth, Texas.

**Peter Aronson '74** is president of Best Buys, Inc., Metuchen, N.J.

**Steven Rizzo '74** is an executive recruiter/management consultant for Avery Associates, Bedford, N.H.

**William Zarycranski '74, '72** is senior director of global medical affairs for Wyeth Pharmaceuticals, St Davids, Pa.

**Andrew Franklin '75** is a broadcaster of television and radio for NBC News, New York.

**Arthur Spence '75** is president of Spence & Associates, Saginaw, Mich.

**John Lorts '76** is an audiovisual production officer for Norfolk Naval Shipyard, Portsmouth, Va.

**Bruce Senior '76** is a photographer and owner of Senior Pro-Imaging, Houston, Texas.

**Dale Degraff '77** is a software designer and developer for Express Imaging Systems, LLC, Seattle, Wash.

**Don Forschmidt '77** is producer and director for Primelight Productions, Riverdale, N.Y.

# Alumni Highlights

**Steven Mayer '77**, is a microlithography consultant for Steven Mayer Photography, Stowe, Vt.

**Steven Neeck '77** is a program executive for NASA Headquarters, Washington, D.C.

**Gregg Tashker '77** is a global business manager for DuPont, Wilmington, Del.

**Paul Blumenfeld '78**, is a business analyst for Inamed, Santa Barbara, Calif.

**William Calpus '78** is vice president of manufacturing for Lifetouch Publishing, Eden Prairie, Minn.

**Stephen Graff '78** is a quality assurance specialist for Western Lithotech, Jacksonville, Fla.

**Virgil McCullough '78, '77** is a technology commercialization and media analyst for VM2 Consulting, Austin, Texas.

**Bruce Rosenstein '78, '77** is a senior packaging quality manager for Kraft/Nabisco, E. Hanover, N.J.

**Lewis Glass '79, '77** is an interactive media designer and developer for Medical Video Technologies, Natick, Mass.

**George Schnurr '79, '77** is director of information technology for Howard Press Inc., Roselle, N.J.

**John Eldridge '80, '77** is a senior technical manager and adjunct professor for RIT, Rochester.

**Kurt Roberts '80** is a product manager for DuPont Electronic Technologies, Research Triangle Park, N.C.

**Mark Bofinger '81**, is vice president of sales for Colorlith Corp., Marlton, N.J.

**Lynne Damianos '81, '79** is a principal for Damianos Photography, Framingham, Mass.

**Stephen Muskie '81** is a web designer for Stephen Muskie, Harrisville, N.H.

**Scott Cornish '82, '80** is managing director of national production for the *New York Times*, New York.

**Gabriel Landry '82** is director of human resources for Puyallup Tribal Health Authority, Tacoma, Wash.

**Mark Bennard '83, '81** is a manager for Hahn Graphic Inc., Rochester.

**Abby Diamond '83** is an accountant/auditor for Abby Diamond, CMA, Hull, Mass.

**Ronald Hinds '83** is director of four color print production for Channing Bete Co., South Deerfield, Mass.

**John Martino '83**, is an account executive for Litho Art Inc., New York.

**Mark Merritt '83, '76** is an editorial systems manager for Conde Nast Publications, New York.

**James Mitchell '83, '81** is an account executive for Daphnia Web Design, New York.

## Smith's work spells relief for many

Lactaid and Beano, products that help millions of people avoid severe gastric distress, might have languished in obscurity without the efforts of Leonard Smith '75 (MBA).

Lactaid, a product that makes it possible for lactose-intolerant people to consume dairy products, was relatively unknown when owner/inventor Alan Kligerman recruited Smith in 1986. Smith had worked his way up to vice president for sales and marketing for Gist-brocades USA, a producer of industrial enzymes and bakers' yeast, but the idea of working for the small, innovative "nutraceutical" company appealed to him.

"The product literally changed people's lives," Smith says. "It felt great, helping people and making a living at the same time."

As president and chief operating officer, Smith handled production, finance and marketing. "The owner, a true entrepreneur, concentrated on dreaming up new products, and I ran the company," he says. "Everything just sort of came together, and I give the credit to my RIT MBA. The practical emphasis really helped me."

In the four years after Smith arrived, sales of Lactaid increased almost 300 percent and profits grew even more. The success got noticed; seven pharmaceutical firms competed to buy Lactaid and in 1991, it was purchased by Johnson & Johnson.

Meanwhile, Kligerman had come up with Beano, a product for prevention of gas often caused by dried beans and vegetables, and Smith became instrumental in its development. The whimsically named but highly effective product received a serious boost when Beano was discovered to be helpful to coronary patients, who are encouraged to eat more beans, fruits and vegetables. But

the change in diet can have an unfortunate side effect – lots of gas. The product was recommended by Dr. Dean Ornish, best-selling author and advocate of a prudent diet as a means to heart health, in his clinics. The American Heart Association approved Beano for sponsorship of the "Beano Heartride," a bicycling fundraiser.

About the same time, noted chefs and food gurus were popularizing ethnic and regional cuisines, often rich in legumes and fresh produce. Americans embraced the trend – and Beano.

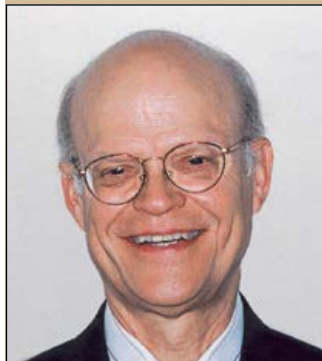
Sales ultimately exceeded Lactaid's, and in 1997, Smith helped negotiate the sale of Beano to Block Drug. He started his own consulting company, NUTRAssociates Inc. He advises several major international health-product companies on development, production and marketing issues. His experience and expertise is in demand as interest in dietary supplements, nutraceuticals, cosmeceuticals, herbal preparations, and other alternative health-care products continues to grow.

"People are working very hard to develop products with proven efficacy," he notes. "There are a lot of good products in the market, but there's also some snake oil out there."

Smith, who lives in Marmora, N.J., with his wife, Patricia, has enjoyed great success since he left RIT in 1975 with that shiny new MBA. But he admits his impressive resume doesn't reveal the fact that as an undergraduate at Union College, "I did not study as hard as I might have." After graduation from Union, he joined the Army and ended up in Vietnam.

After that experience, he was ready to work hard in grad school, but his undergraduate grades weren't high enough for admission. Due to a high score in the business school aptitude test, RIT accepted him on probation.

"With a family now to support and having done my time in Vietnam, my study ethics sure changed and I graduated with a 4.0," he says. "And for giving me the chance, I will always be grateful to RIT."



Leonard Smith '75



## Interested in supporting RIT, but your portfolio isn't looking as good as it used to?

Consider alternate giving opportunities...

For example, through a charitable gift annuity you can make a gift, receive a tax deduction, and generate a life income for yourself and/or others. Remembering RIT in your will and estate plans is easy and gives you the opportunity to make a great impact on our students for generations to come.

In recognition of your foresight and generosity in establishing a planned gift, you will be recognized as a member of the Ellingson Society, RIT's planned-giving recognition group.

Gifts that fund the future: an opportunity to benefit you and your family today and RIT tomorrow!

For more information about including RIT in your will, life income plans, and other gift and estate planning options, please call Bette Foster, Assistant Director of Planned Giving, RIT, 116 Lomb Memorial Drive, Rochester, NY 14623-5608, 585-475-6566 or toll free: 1-866-237-4008.

**George Planding '83** is a print quality director for *Martha Stewart Living*, New York.

**Reuben Rettke '83** is production and product manager for Group InfoTech, Lansing, Mich.

**John Watson '84, '82** is owner of Premium Color Graphics, Clifton, N.J.

**Scott Wild '85** is a western college sales representative for Iparadigms, Turnitin.com, Oakland, Calif.

**Jennifer Hanson Williams '85, '84** is a customer service manager for Sherman Printing Co., Inc., Canton, Mass.

**James Gleason '86, '85** is a production manager for Asia Pacific Offset, Washington, D.C.

**Joan Gallagher Guild '86, '85** is currently a certificate advance graduate studies (CAGS) candidate at Plymouth State College, Plymouth, N.H., and is a college counselor for New Hampshire Community College, Manchester, N.H.

**Randall James '86, '77** is senior vice president and CIO for Americo Life, Inc., Kansas City, Mo.

**Andrew Juenger '86, '83** is a color scientist for Hewlett-Packard Co., Vancouver, Wash.

**Francine Massiello Levesque '86, '84** is president of Francine Photography, Camden, N.C.

**John Van Antwerp '86** is a photographer and cinematographer for John Van Antwerp, New York.

**Matthew Elman '87, '85** is a commercial photographer for Banta Integrated Media, Cambridge, Mass.

**Theresa Dimaggio Tierno '87** is a publisher for the Kids' Directory of Pittsburgh, Gibsonia, Pa.

**David McCloskey '88** is chief of database retrieval and distribution development for the U.S. Printing Office, Washington D.C.

**Robert Qualters '88, '85** is an account executive for Lam Research, San Jose Calif.

**Robert Bailey '89** is an instructor for TRW, Command and General Staff Officers Course, Ft. Leavenworth, Kan.

**Kenneth Goldman '90, '88** is director of product development for Demand Management Innovations, Tampa, Fla.

**Karen Murray '90, '88** is an instructor for Pennsylvania College of Technology, Williamsport, Pa.

**Philip Smith '90, '89** is a business manager for Michigan Antique and Collectible Festival, Midland, Mich.

**Sean McElveney '91** is a photographer and cinematographer for Pat Crowe Photography, Bear, Del.

**Christine Miller Landers '92** is a development engineer for IBM Corp., Hopewell Junction, N.Y.

**Aaron Sucher '92** is director of computer management for Fidelity Investments, Merrimack, N.H.

**Julian McLennan '93** is marketing manager for Live Wire Graphics, High Point, N.C.

**David Richard '93** is owner of Interactive Media Design and Development, Washington, D.C.

### LIBERAL ARTS

**Thomas Lake '74** is owner of Health Horizons of Georgia, Atlanta, Ga.

**Dawn Quinlan Marlowe '76** is a counselor for the University of Rochester.

**Sheryl Rockwell '76** is an account representative for GES Exposition Services, Teterboro, N.J.

**John Scorsine '80** is a command judge advocate for the 115th E.A. Brigade and a plans, operations and military support officer for the state of Wyoming. Appointed by the governor, he also serves as a member of the Wyoming Board of Parole and commander of the Wyoming Wing, Civil Air Patrol.

**Lisa Pratt '91** is director of special gifts for Randolph-Macon College, Ashland, Va.

**Nicole Richardson '91** is assistant vice president for Customer Solutions and Technical Integration Group, New York.

**Jennifer Kuplinski Wick '92** is a health and welfare consultant for Aon Consulting, Inc., Liverpool, N.Y.

**Matthew Stoltmann '92** is a pension coordinator for Manualife Financial, Cary N.C.

**Carol Dombrowski '93** is manager of global people development for eBay, Draper, Utah.

**Blaine Fairless '93** is a senior consultant for Gleason & Associates, P.C., Pittsburgh, Pa.

**Carl Johnson '93** is a manufacturing supervisor for Delphi Corp., Rochester.

**Sven Schiller '93, '92** is CEO and senior information technology security consultant for Secugis GmbH, Hamburg, Germany.

**Mark Luffred '94** is president of Mark Andrew Consulting, Medford, Mass.

**Erik Rohde '95** is a police officer for the Wellesley Police Department, Wellesley, Mass.

**Alicia Pena '96, SVP '92** is a case manager for Travis County Services for the Deaf and Hard of Hearing, Austin, Texas.

**Charles Grote '97, '93, SVP '89** is an employment coordinator for the Community Outreach Program for the Deaf, Albuquerque, N.M.

**Allison Ferencz '98, SVP '92** is a residential rehabilitation specialist for the Epilepsy Foundation of Southern New York in Pearl River.

**Christian Roman '99** is part of the direct marketing team for Unisys, Farmington, N.Y.

**Elizabeth Ortolani '00** is a social worker for Strong Memorial Hospital, Rochester.

### NTID

**William Mather '74, SVP '71** is director of direct services for Deaf Community Services of San Diego, Inc. He received a bachelor of science degree in management (May '96) and a master of science degree in administration/supervision (Aug. '98) from Gallaudet University, Washington, D.C.

**Jane Stacy '74, SVP '71** obtained a license in histology from the American Society of Clinical Pathologists (ASCP) and is a homemaker caring for her two children, Jeremy and Jennilee, with husband, Jerald.

**Kylette Bashaw '77, SVP '74** is a computer artist for Southwestern Bell Yellow Pages, Saint Louis, Mo.

**Linda Ignasiak '80, SVP '77** is a photo lab technician for Big George's, Ann Arbor, Mich.

**Terrence Dahlgren '81, '80, SVP '77** is an art director at Vulcan Publications, Birmingham, Ala., where he received two employee awards: 1998 Rookie of the Year and 2001 Best Attitude of the Year. He is also publicity director for the Alabama Association of the Deaf.

**Edward Bazan '82, SVP '80** is a senior press operator for De Anza College, Cupertino, Calif.

**Kathleen Kowalczyk Fortier '85, SVP '82** is a casemix analyst for the University of Massachusetts Memorial Healthcare, Inc., Worcester, Mass.

**Matthew Schwemler '87, SVP '84** is a clerk for the U.S. Postal Service, Devon, Pa. He has traveled in the last few years, most recently to Medjugorje, Bosnia on a deaf pilgrimage.

**Stephen Blumstein '88, SVP '85** is a multimedia computer specialist for the National Security Agency, Ft. Meade, Md.

**James Gibbons '88, SVP '84** is an accountant for the State of Indiana, Division of Budget and Finance, Indianapolis.

**Gregory Gould '88, '86, SVP '83** is an applied computer technologist for ING, Hartford, Conn.



**IN FOR LUNCH . . .** More than 100 alumni and their children who began their studies at RIT this fall attended the "Legacy Lunch" organized by the Office of Alumni Relations during New Student Orientation in September. From left are first-year photography major Kyle Norton and his parents, Sherrie Smith Norton '75 (art and design) and Paul Norton '75 (printing management) of Briarcliff Manor, N.Y. Kyle says he chose RIT because "It's the best photography school I've ever seen," not because mom and dad are graduates.

**Michelle Koshgarian '88, SVP '85** is an optical lab journey person/apprentice optician for Empire Vision Center, E. Greenbush, N.Y.

**Migdalia Colon Rogers '88, SVP '82** is an accounts receivable associate for TranCentral Financial, Inc., Minneapolis, Minn.

**Steven Simmon '88, SVP '85** is a teacher at the Oregon School for the Deaf, Salem, Ore. He completed a master's of science degree in deaf education at Western Oregon University.

**Tedd Warshauer '89, SVP '84** is a senior financial analyst for KPMG Consulting, Tysons Corner, Va.

**Richard Friends '90, SVP '85** is an assistant function application analyst for Northrop Grumman, Washington, D.C.

**Lisa Vaccaro Alfieri '91, SVP '88** is treasurer for the Syracuse Club for the Deaf and was elected president of the New York State Deaf Women's Bowling tournament.

**Candas Barnes '91** is a staff interpreter for Gallaudet University, Washington, D.C.

**John Jones '91, SVP '87** is a recreational leader for the Arkansas School for the Deaf, Little Rock.

**Nicholas Romano '91, SVP '88** is pre-press coordinator of offset presses for Ace Painting Inc., Springfield, N.J.

**William Vance '91, SVP '86** is a drafter for ACIPCO, Birmingham, Ala. He achieved his 1,000th skydiving career jump on May 27, 2002.

**Thomas Spence '93, SVP '84** is a computer specialist for AFPCA/OAXU, Washington, D.C.

**Jason Gegen '99, SVP '95** is part of the technical staff of Tenwick USD 267, Andale, Kan.

**Jennifer Ayque '00, SVP '94** is an accounting assistant for Bridgehampton National Bank, Bridgehampton, N.Y.

**Chad Taylor '00, SVP '94** is a product development manager for Sprint Corp., Kansas City, Mo. His first project was the Sprint Relay Online (Internet Relay).

**Paul Ehlke '01, '97, SVP '93** is a computer specialist for the U.S. Printing Office, Washington, D.C.

**Brett Talbott '01** is a residential services coordinator for the Deaf Services Center of Milestone, Inc., Glenside, Pa.

**Sarah Wrazen '01** is a teacher of the deaf for the Los Angeles Unified School District.

## SCIENCE

**Nancy Caves '64** is a career resources assistant for Hobart and William Smith Colleges, Geneva, N.Y.

**James Full '70** is a market manager for Stepan Co., Northfield, Ill.

**Victoria Nott Ingersoll '73** is an energy manager for the Catholic Diocese of Buffalo (N.Y.).

**Allen Williams '73** is a computer engineer for Al Williams, Elmira, N.Y.

**David Youngs '76** is a principal scientist and manager of API sourcing for Procter and Gamble Pharmaceuticals, Norwich, N.Y.

**Edward Cedrone '87** is a biologist II for ATCC, Manassas, Va.

**Shane Demorais '88** is owner of Fundamental Perception Inc., San Jose, Calif.

**Robert Elliott '89** is an information systems consultant for MetLife, Bridgewater, N.J.

**Karen Gerber-Vecsey '89** is a pediatric specialist for the Children's Hospital of Buffalo.

**Christopher Root '90, '87** is a validation consultant project manager for cGMP Validation L.L.C.C., Plymouth Meeting, Pa.

**Melissa Stiglitz Schweriner '90** is a training specialist for Wyeth Research, Collegeville, Pa.

**David Cooper '91** is a senior research scientist for Wyeth, Pearl River, N.Y.

**Dawn Campbell '92** is manager of sort and test equipment for Intel Corp., Chandler, Ariz.

**Stephen Guida** is a clinical education coordinator for RIT, Rochester.

**Joseph Varanoske '92, SVP '87** is a quality control supervisor for Genzyme Corp., Cambridge, Mass.

**Andrew Zivic '93** is a software engineer for Demandtec, San Carlos, Calif.

**Nelson Clinch '94** is a statistician for the U.S. Department of Agriculture/FSIS, Washington, D.C.

**Jeremy Conklin '94** is a student physician for the U.S. Air Force, Biddeford, Me.

**Kelly Richards '94** is a clinical data managing consultant for Research Pharmaceutical Services, Plymouth Meeting, Pa.

**Mark Sistare '94** is a scientist for BD Technologies, Research Triangle Park, N.C.

**Raymond Courtney '95** is a manufacturing chemist for Eastman Chemical, Kingsport, Tenn.

**Shane Kurowski '95** is a project specialist for Amgen, Inc., Longmont, Colo.

**Karen Conlan '96** is a systems analyst for DuPont, Wilmington, Del.

**Stacia Chesney '97** is a project manager for EDS, Rochester.

**Michael Baglivio '98** is a senior software engineer for Boeing Autometric, Springfield, Va.

**Christopher Hauf '98, '93** is a senior color scientist for Eastman Kodak Company, Rochester.

**David Hetzer '98** is an applications engineer for Timbre Technologies, Inc., Santa Clara, Calif.

**Jonathan McCaerney '98** is a visiting professor for Tennessee Technological University, Cookeville, Tenn.

**Paul Wiernicki '99** is a sonographer for Johns Hopkins Hospital, Baltimore, Md.

**Russell Anziano '00** is a nuclear medicine technologist for St. Francis Hospital, Hartford, Conn.

**Stephanie Cacciatore Terrizzi '00, '99** is a research assistant for Brown University, Providence, R. I.

**Jeffrey Salzmann '01, '93** is a senior process engineer for Vishay Thin Films, Inc., Niagara Falls, N.Y.



## Births

### Business

**Robert Lucisano '81** and wife, Katrina, a daughter, Anika, March 20, 2002.

**Kimberly Winter Gilmore '82, '80** and husband, Matt, a daughter, Allison, April 23, 1997.

**Karen Roberts '93** and husband, Thomas, a daughter, Lauren, July 12, 2002.

**Raymond DeJohn '00** and wife, Cara, a son, Kelin Riley, May 7, 2002.

### CAST

**Alisa Clemente '91** and husband, Larry, a son, Alex, June 13, 2000.

**Heidi Morris Toon '91** and husband, Brett, sons Hayden and Wayne Daniel, July 16, 2001.

**Richard LaCava '92** and wife, Kristine, a daughter, Stephanie Ann, April 2, 2002.

**David Berner '94** and wife, **Melissa (Cookson) '94**, a daughter, Hayden, August 2, 2002.

**Xavier Arana '98, '94, SVP '89** and wife, **Sarah (Smith) '97, SVP '93**, a son, Henry Javier, January 28, 2002. They reside in Minneapolis, Minn.

### Engineering

**Jennifer Sheehan '93** and husband, Marc, a daughter, Emma, Dec. 19, 2001.

**Carl Kilborne '95** and wife, Tamara Lynn, a son, Gage Daniel, February 23, 2002.

### Graphic Arts & Photography

**Judith Olsen Trenchard '91, '91** and husband, Charles, and daughter, Lucy Marie, April 12, 2002.

**Michael Leaventon '92** and wife, Katie, a son, Andrew, February 13, 2002

### Liberal Arts

**Kerry Levison Johnson '91** and husband, Michael, a daughter, Julia Rose, May 19, 2002.

**Richard Postl '95, SVP '90** and wife, **Renee (Limanek) '95, SVP '89**, a son, Dawson Aspen, March 11, 2002. He joins big sisters, Katarine, age 4, and Daphine, age 2.

### NTID

**Tina Flaten Breindel '78, SVP '75** and husband, Joe Dannis, a son, Ariel, and daughter, Beryl, January 7, 2002.

## Alumni Highlights

### M.D. earns M.S. – at 75 (an RIT record!)

A drawback of being a highly skilled vascular surgeon who just earned a master's degree in health systems administration is an endless stream of job offers, says Joseph Geary '02.



Joseph Geary '02

"I'm getting job offers all the time, but I don't want them to interfere with my play," Geary says with a smile. At age 75, the oldest person ever to graduate from RIT has earned the right to some leisure time.

Why did an accomplished surgeon want to return to the classroom when favorite activities like boat building and dock construction beckoned?

After 40 years of patient care, he wanted to learn about the business of healthcare. "It was time for me to take a good look at the financial, administrative and management side of medicine and what makes the healthcare system tick," he says, likening RIT's health systems administration degree to an MBA for doctors.

Geary spent his final two quarters on co-op with ViaHealth, a Rochester-based health-care organization, where he was an assistant to president and chief executive officer Sam Huston. Degree in hand, he plans to be a healthcare activist, consultant and physicians advocate.

Advocacy is a role for which he seems ideally suited. A self-described "people person," his patients were always his foremost concern. "I loved taking care of them," he says.

The son of a ship builder from Gloucester, Mass., Geary earned a degree in chemical engineering from the University of New Hampshire before deciding on a career in medicine. After graduation from Georgetown University, an internship at St. Mary's Hospital brought him to Rochester in 1954. That was when he met his future wife, Catherine. Returning to New England a year later, he became surgical resident at Boston City Hospital and, four years later, a fellow in vascular surgery at Massachusetts General Hospital, associated with Harvard Medical School.

He returned to Rochester in 1960 and helped establish the first vascular surgery unit at Rochester General Hospital. "Vascular surgery was in its infancy in those days," he says. Since then he has been chief of vascular surgery at RGH, associate professor of surgery at the University of Rochester School of Medicine and associate professor of surgery with the Armed Forces Medical School in Bethesda, Md., during the Persian Gulf War. He was one of the oldest officers to serve during the conflict.

He and his wife also raised a family of six children including son Kevin, who joined and later assumed his father's practice. Geary retired from active surgery in 1992 but was lured back to Rochester General a few months later. He retired again in 2000 but continues to lecture and teach. "It's a lot of fun for me," he says. "I was a teacher by heart."

Of his RIT studies – completed almost entirely online – he says: "It was the perfect forum. The coursework is terrific. I learned a ton. I'm thrilled about it all."

He adds that he's proud of his 4.0 average, maintained not only at RIT but also throughout his post-secondary education – something he uses as encouragement for his grandchildren – all 14 of them.

He also looks forward to having more "play" time to spend doing what he enjoys most, building boats. That may have been his vocation, he says, had he not chosen medicine. His many patients over the years no doubt are grateful he chose "doc" over dry dock.

# Eight alumni honored for career accomplishments

**William H. Turri '62** is RIT's Outstanding Alumnus for 2002. He received this award and seven other graduates were honored as Distinguished Alumni at a celebration Oct. 12 during Brick City Festival and Reunion 2002.

The Outstanding Alumnus Award is given annually to a person who has excelled in serving the needs of the RIT community. The Distinguished Alumni Awards acknowledge the accomplishments of alumni in their career fields.

Turri, who retired last year as president of Case-Hoyt Corp. after a distinguished career in the Rochester printing industry, received a B.S. in graphic arts from the College of Graphic Arts and Photography. He serves on the RIT President's Roundtable, is a member of the Nathaniel Rochester Society President's Circle and is chairman of the NRS scholarship committee. Turri lives in Rochester.

In 1989, he and his friend Peter C. Browne '64 established the Turri & Browne Scholarship.

RIT's 2002 Distinguished Alumni are:



**Bielenberg**

**Kenneth R. Bielenberg '87** (B.S., computer science), B. Thomas Golisano College of Computing and Information Sciences. Bielenberg, who joined PDI/Dreamworks in 1990, served as the visual effects supervisor for the

Oscar-winning animated feature, *Shrek*. In that position, he provided both creative and technical supervision to the digital artists who brought the big green ogre to the screen. He now is working on *Shrek 2*. Bielenberg lives in the San Francisco area.



**Chebeir**

**Sam Chebeir '96** (M.S., packaging science), College of Applied Science and Technology. Chebeir founded Plastical Industries Inc. in 1978 with the invention of the disposable automotive seat cover. In 1984, Chebeir acquired Transamerican Plastics Corp. from Pillsbury and expanded the company to become a major West Coast manufacturer of industrial, food and medical packaging. He sold his shares in both corporations in 2000 and serves on the board of the new entity that encompasses both companies. He lives in Corona, Calif.



**Pelano**

**Gerald D. Pelano '69** (B.S., business administration), College of Business. Pelano is co-founder and co-president of Traditional Floorcovering Inc., which provides contracting services to major homebuilders. He also is a founding director and an executive board member of Potomac Bank of Virginia. A resident of Fairfax Station, Va., he is active in community organizations and recently chaired the \$6.5-million capital campaign for Paul VI Catholic High School in Fairfax.



**Berlik**

**Lee E. Berlik '92** (B.S., professional and technical communication), College of Liberal Arts. After graduating from RIT, Berlik went on to earn his Juris Doctor, cum laude, from American University's Washington College of Law in 1995. He is a trial lawyer with Mintz Levin, a 500-attorney firm with offices in Boston, New York City, Washington, New Haven and Reston, Va., where he resides.



**Harris**

**Jeffrey K. Harris '75** (B.S., photographic science), College of Science. Harris is deputy to the executive vice president of Space Systems Co., a \$6.8 billion business unit that designs, develops and operates launch systems, ground systems, remote-sensing satellites, communications satellites, ballistic missiles and missile defense systems for military, civil and commercial customers. His previous assignments include president and general manager of Lockheed Martin Missiles and Space Operations, president of Lockheed Martin Special Projects, and president of Space Imaging. Before entering the private sector, Harris served in senior leadership positions for the U.S. defense and intelligence communities. He lives in Arnold, Md.

**Robert O. Frasca '88** (B.S., mechanical engineering), Kate Gleason College of Engineering. Frasca is CEO



**Frasca**

and president of Affinova Inc., created to help companies develop new products. An Internet pioneer, he was founder, chairman and CEO of Internet Venture Works; vice president and general manager of Lycos.com; and executive vice president of WiseWire Corp. From 1988 to 1994, he flew S-3B Vikings for the U.S. Navy aboard the aircraft carrier U.S.S. Forrestal and was on active duty in Desert Storm. He lives in Newton, Mass.



**Atkins**

**W. Scot Atkins '92 and '89** (M.S., career and human resource development, College of Continuing Education, and B.S., business administration, College of Business), is being honored by the National Technical Institute for the Deaf. Atkins, now senior vice president and human resources officer for CSD in Sioux Falls, S.D., began his career with Sprint-Relay Texas in 1992 and in 1995 became director for the Lubbock Relay Center for the Sprint-CSD partnership. He is involved in many professional and community activities and serves as secretary for the Sioux Falls chapter of Sertoma, working to provide funding for after-school activities for deaf and hard-of-hearing children.

**For more information about Reunion 2002, visit [www.rit.edu/reunion](http://www.rit.edu/reunion).**



**Sara Dillon Denzak '84, SVP '81** and husband, **James M. Denzak '84**, a son, Nicholas, February 2002.

**James Gibbons '88, SVP '84** and wife, **Debbie (Kittredge) '89, SVP '84**, a daughter, Jennifer Rose, January 4, 2001.

**Rachel Slike Kahler '88, SVP '85** and husband, Scott, a son, Zachary Francis, December 14, 2001. He joins sister, Victoria, 2½ years old, and brother, Bailey, 4½ years old.

**Debra Adler Rosko '88, SVP '84** and husband, Conrad, a son, Mason, June 5, 2002.

**Gregory Doskos '89, SVP '85** and wife, **Kathleen (Moran) '91, SVP '86**, a son, Chester Paul, April 12, 2002.

**Michael Skjeveland '89, SVP '85** and wife, Lisa Parker, a son, Max, July 5, 2002.

**Jennifer Huxtable '92, '91, SVP '88** and husband, Branden, a daughter, Olivia Ruth, May 26, 2001. They live in Seattle, Wash.

**Susan Somogyi Siemsen '93, SVP '89** and husband, Murray, a daughter, Megan, May 23, 2002.

## Marriages

### Business

**Ryan Bonvillian '00** and Tara Goldgeiger, April 27, 2002.

**Scott Plummer '00** and **Susan M. Osborn '93**, Nov. 17, 2001.

### CAST

**Alisa Ling '91** and Larry Clemente, May 17, 1997.

### CIAS

**Dara Landsberg '00** and **Bill Britt '00**, April 21, 2002.

### Engineering

**David Stanton '94** and Stephanie Woods, Aug. 24, 2002.

**Michael Carney '95, '93** and Jennifer Hickey, Aug. 17, 2002.

**Timothy Manchester '00** and **Keegan Johnson '00**, Aug. 10, 2002.

### Fine & Applied Arts

**Michelle Shields '93** and Philip Civiletti, July 2001.

### Graphic Arts & Photography

**Philip Smith '90, '89** and Rebecca Persons, February 2 2002.

### Liberal Arts

**Christian Roman '99** and **Heather Nichols '99**, June 8, 2002.

### NTID

**William Mather '74, SVP '71** and Patricia Anne Branz, June 29, 2002.

**Robert Traetta '81, SVP '76** and Debra H. Johnson, Dec. 1, 2001.

**Migdalia Colon '88, SVP '82** and Alexander Rogers, Jr., Aug. 11, 2001.

**Rachel Slike '88, SVP '85** and Scott P. Kahler, June 9, 2001.

**Michael Skjeveland '89, SVP '85** and Lisa Parker, Aug. 4, 2001.

**Tedd Warshauer '89, SVP '84** and Kristin da Costa, Oct. 6, 2001.

**Todd Epps '00, SVP '93** and **Krista Thies '01**, May 2002.

**Heather Rowley '01** and Thomas J. Langton, July 17, 2002.

### Science

**Jennifer Pepe '96** and Jay Thompson, March 24, 2001.

**Aimee Pickles '95** and Scott Kievitt, June 2, 2001.

**Stephanie Cacciatore '00, '99** and Vincent Terrizze, May 18, 2002.

## In Memoriam

### Business

**Ellen Johnston Erwin '28** Dec. 15, 2001.

**Arland Morgan '39** Feb. 12, 2002.

**Barbara Davis Alders '53** June 14, 2002.

**Virginia Holmes '56** July 21, 2002.

### CAST

**Scott Watkins '95** May 6, 2002.

### Continuing Education

**David Gleason '50** Nov. 8, 2001.

**Edward Reichart '57** April 10, 2002.

### Engineering

**Lewis Bellinger '29** Sept. 25, 2001.

**Paul Predmore '39** March 23, 2002.

### Fine & Applied Arts

**Marion Colwell '31** May 11, 2002.

### Graphic Arts & Photography

**Henry Dymant '51** Jan. 25, 2002.

## KEEP IN TOUCH

Let us know if you have moved or plan on moving in the near future so that we can make sure you continue to receive *The University Magazine*. Let your friends know what you're doing by sending us news about your activities, including jobs, promotions, and awards.

Please note: While we make every effort to include all the news items you send us, the long lead time required for publication means that it may be several months before your item appears. Please look for it in following issues.

Please send me information on:

- Alumni Admissions Network
- Alumni programs and activities
- The Athenaeum (RIT's Academy of Learning After 50)
- Athletic Association
- Career Advisory Network
- Campus Connections merchandise
- Corporate education and training
- Graduate studies
- Nathaniel Rochester Society
- Planned or deferred giving
- RIT sports schedule
- Undergraduate studies

**Mail to: Rochester Institute of Technology**

Office of Alumni Relations  
Crossroads Building  
41 Lomb Memorial Drive  
Rochester, NY 14623-5603

## Update Online at [www.rit.edu/alumni](http://www.rit.edu/alumni)

Name \_\_\_\_\_

Maiden Name \_\_\_\_\_

Dept./Yr. \_\_\_\_\_

Home Address \_\_\_\_\_

City, State, Zip \_\_\_\_\_

E-mail Address \_\_\_\_\_ Web Address \_\_\_\_\_

Home Phone \_\_\_\_\_

Business Name \_\_\_\_\_

Business Address \_\_\_\_\_

City, State, Zip \_\_\_\_\_

Job Title \_\_\_\_\_

Business Phone \_\_\_\_\_

Class Note Information (to be included in an upcoming issue):

\_\_\_\_\_  
\_\_\_\_\_  
\_\_\_\_\_



## Worth Noting

### Wednesday, Dec. 4

Women's basketball season opener, RIT vs. Keuka College. 7 p.m., Clark Gymnasium

### Friday, Dec. 6

Men's basketball season opener, RIT vs. Hobart. 7 p.m., Clark Gymnasium

### Friday, Dec. 6 – Wednesday, Jan. 8

"Centennial Exhibit: Looking Back to the Future," retrospective show of RIT's art programs. Bevier Gallery, Booth Building

### Thursday, Dec. 12

Gannett Lecture Series, "Global Village or World Empire: Contending Visions and Social Realities of Globalization," Robert D. Manning, Gannett Professor. 7:30 p.m., Webb Auditorium, Booth Building

### Thursday, Dec. 12 – Sunday, Feb. 9

"An Aesthetic Heritage: College of Imaging Arts and Sciences Tribute to Past Art Faculty," Gallery r, 775 Park Ave., Rochester

### Thursday, Jan. 16

Gannett Lecture Series, "Post-Apartheid South Africa: Globalization and the Racial Politics of Place and Space," Martin Murray, professor, State University of New York, Binghamton. 7:30 p.m., Webb Auditorium, Booth Building

### Friday, Feb. 21

Performing Artists Concert Series, Equinox Symphony Chamber Orchestra. 8 p.m., Panara Theatre, Johnson Building

### Saturday, April 26 – Saturday, May 10

"100 Years of Photography," School of Photographic Arts and Sciences gallery, Gannett Building

## CAMPUS CONNECTIONS

"Your Campus Store"



The look you love!

Left: **Crewneck sweatshirt** – Gray with navy and beige RIT ALUMNI embroidery. 50 percent cotton. M,L,XL,XXL. \$35.95 SKU 2020847

Center: **T-shirt** – Gray with navy left chest RIT ALUMNI and tiger imprint. 100 percent cotton. S,M,L,XL, XXL. \$15.95 Class 600

Right: **T-shirt** – Gray with navy and beige RIT ALUMNI embroidery. 100 percent cotton. M,L,XL,XXL. \$19.95 SKU 2020848

## Show your spiRIT by wearing great garb from Campus Connections!

### To order by mail:

Send your selection along with your name, shipping address, phone number and/or e-mail to:

### Campus Connections

Rochester Institute of Technology  
48 Lomb Memorial Drive, Bldg. 15  
Rochester, NY. 14623

### To order online:

Visit the Web site at:  
<http://bookstore.rit.edu>

### Payment:

Make checks payable to RIT Campus Connections. We also accept Mastercard and Visa:

signature

card number

expiration date

### Shipping and handling:

For delivery in the U.S.: Add \$5.95 for the first item, \$1 for each additional item. For residential delivery, add \$1.35 per package. Second-day air is an additional \$3. Next-day air is an additional \$5.

### Sales tax:

For delivery in New York state, there is a 4 percent sales tax on clothing, and an 8 percent sales tax on shipping fees.

### For more information:

Call 585-475-5243

Qty.	Cat.#	Size	Description	\$ Each	\$ Total



**Tiger** \tī-ger *n.* [pl. tigers] **1.** a large Asian mammal of the cat family **2.** a formidable person **3.** RIT alumnus/a

**Intelligence:**

high; able to focus intently on goals; understands alternatives and calculates options quickly; a leader

**Habitat:**

wherever high technology and cutting-edge opportunities exist; often establishes new territory



**Strength:**

impressive; works hard and has plenty of academic and real-world muscle; often dominates the career territory of choice

**Vocalization:**

roars in support and defense of ideals; quick to make known where he or she stands

**Responsiveness:**

once stirred (we believe), their reaction is immediate and steadfast; they are especially attracted to great opportunities such as the RIT Trustees **ROAR** Matching Gift Challenge!

RIT Trustees Will **DOUBLE** OR **TRIPLE** Your Gift Dollars

Alumni, join the Trustee **ROAR** Matching Gift Challenge and help us Raise Our Alumni Responses this year.

If you haven't made a gift to RIT since 2001, our Trustees have pledged to

- u Dollar for Dollar (for a gift of \$25 or more) u
- u Two for One (for a gift of \$25 or more from 1990–2002 graduates) u

Make a gift online at [www.rit.edu/makeagift](http://www.rit.edu/makeagift) or call 1-800-



**NEW!** ACT is RIT's new Automatic Contribution Transfer program. Use ACT now to bank make automatic transfers in the amount and from the account you choose. For more information, visit [www.rit.edu/actnow](http://www.rit.edu/actnow).

# R·I·T

**Rochester Institute of Technology**

University News Services  
132 Lomb Memorial Drive  
Rochester, NY 14623-5608

**Change Service Requested**

Non-profit Org.  
U.S. Postage Paid  
Burlington, Vt 05401  
Permit No. 450

**The 'Future' Arrives—page 6**

**[www.rit.edu](http://www.rit.edu)**

