

End of the Quarter Report 20083

Academic Intervention & Mentoring Program (AIM)

Supplemental Instruction

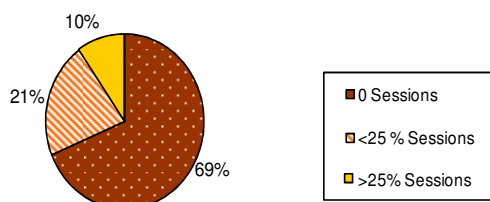
Summary of SI Support

- 16 courses
- 25 sections
- 1032 students enrolled
- 440 SI sessions welcomed 1118 attendees (323 individual students)

Spring Courses Supported

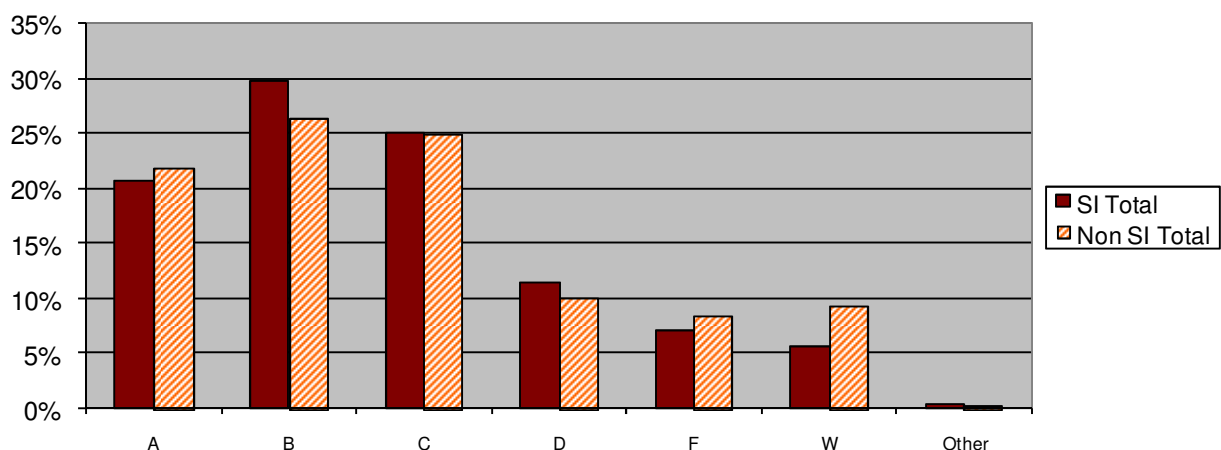
- 1 Discrete Math for Tech I (1016-205, section 1)
- 2 Discrete Math for Tech II (1016-205, sections 1 and 5)
- 1 Calculus for Engineering Technology I (1016-231, section 1)
- 1 Calculus with Foundations II (1016-262, section 3)
- 1 Calculus A (1016-271, section 1)
- 4 Calculus B (1016-271, sections 1, 3, 4 and 6)
- 1 Project Based Calculus I (1016-281, section 1)
- 1 Project Based Calculus III (1016-283, section 2)
- 2 Computer Science II (4003-232, sections 1 and 2)
- 1 Computer Science III (4003-233, section 5)
- 1 Principles of Microeconomics (0511-211, section 1)
- 1 Principles of Macroeconomics (0511-402, section 4)
- 3 University Physics Ia (1017-369, sections 1, 2 and 3)
- 3 University Physics IIa (1017-389, sections 1, 3 and 4)
- 1 General & Analytic Chemistry II (1011-216, section 1)
- 1 Materials and Processes of Photography Lecture (2076-212, all sections)

20083 Frequency of Attendance at SI Sessions
n=1032



20083 Grade Distribution of SI vs. Non-SI Attendees*

SI Attendees n=323 Non-SI Attendees n=709



% of students in SI or Non-SI group of fully supported sections receiving each letter grade.
i.e. 9% of Non SI Attendees withdrew, as opposed to 5% of SI Attendees.

End of the Quarter Report 20083

Academic Intervention & Mentoring Program (AIM)

Learning Assistance (LA)

Demographics

378 students were invited to receive LA

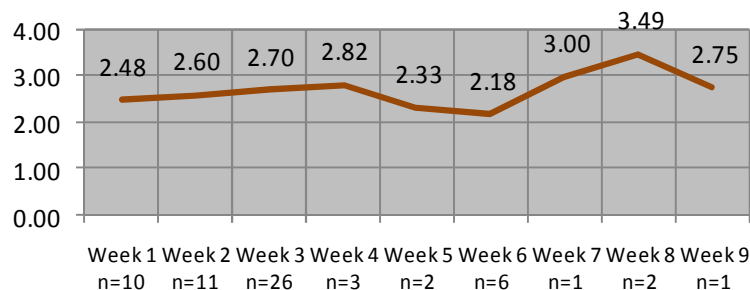
- 60 Received a D/F and W
- 200 Received a D/F
- 104 Received a W

62 Students fully participated in Learning Assistance
(12 additional students expressed an interest, however they did not follow through with their initial intake appointment)

20 COS; 12 KGCOE; 9 GCCIS; 8 CIAS; 6 CAST;
3 COLA; 3 SCB; 1 NTID

33 Male; 29 Female; 19 AALANA; 1 D/HH

Relationship Between Initial Intake Meeting and Average Term GPA



Student Outcome Summary

166 Student contact hours were provided

37 Students raised Term GPA

35 Students raised CUM GPA

35 students earned ≥ 2.5 Term GPA

- 29 Met with Learning Assistant prior to week 4
- 24 Met with Learning Assistant ≥ 2 times
- 7 Received Learning Assistance in 20082

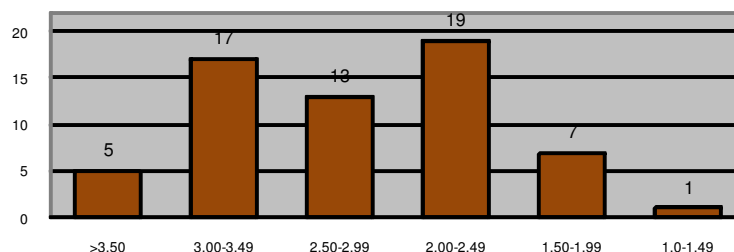
27 students earned ≤ 2.49 Term GPA

- 10 Met with Learning Assistant ≤ 2 times
- 6 stopped working with Learning Assistant after week 3
- 3 Started Learning Assistance during week 6
- 4 Received Learning Assistance in 20082 and continue to struggle academically

Upon Completion of Spring Quarter

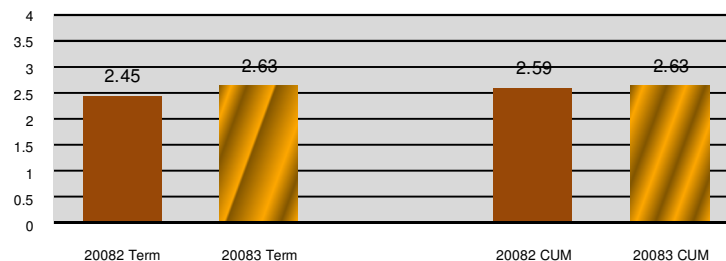
- 8 Students made Dean's List
- 8 Students were placed on probation
- 3 Students will continue with Learning Assistance in 20084

20083 Learning Assistance Participant GPA*



* A majority of students who earned below a 2.0 term GPA had minimal to no contact with the Learning Assistant following their initial intake meeting.

20083 Cohort Learning Assistance GPA*

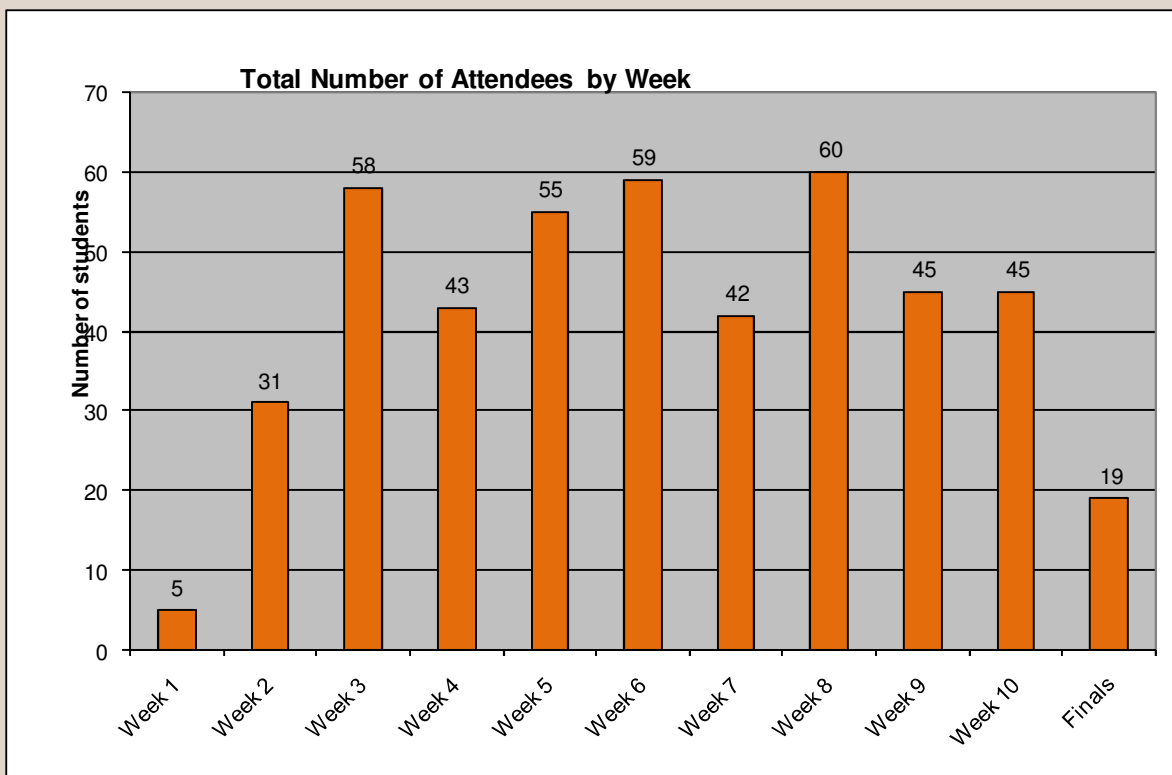


* 20082 Numbers are based on initial data pull.

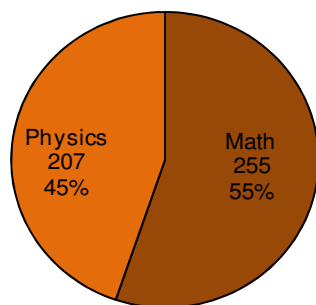
End of the Quarter Report 20083

Academic Intervention & Mentoring Program (AIM)

Sol Heumann Study Center



Math vs. Physics



Study Skills Workshops

- 9 Study skills sessions welcomed 115 attendees (35 individual students)
- Zero students took advantage of individual study skills coaching