

End of the Quarter Report 20072

Academic Intervention & Mentoring Program (AIM)

Supplemental Instruction

Summary of SI Support

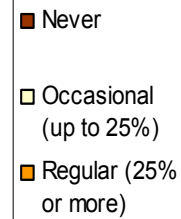
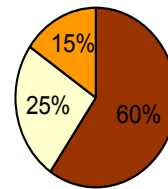
- 7 courses
- 13 sections
- 407 students enrolled
- 161 SI sessions offered
- 174 SI attendees*

*attended at least one SI session

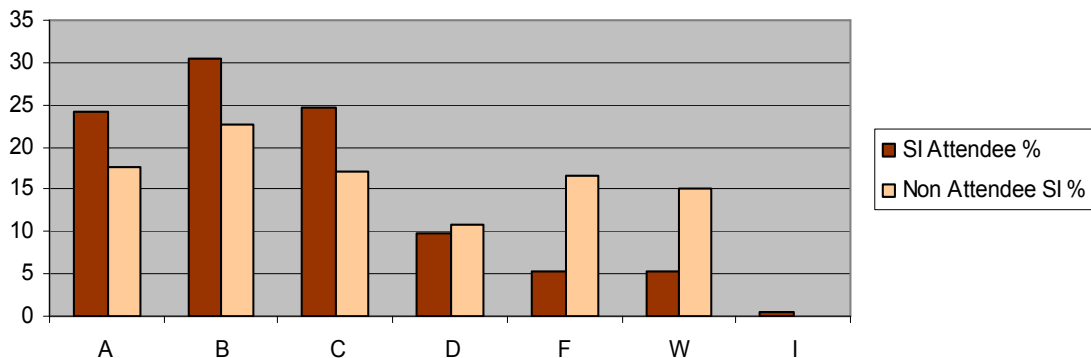
Winter Courses Supported

- 2 Programming for IT I (4002-217)
- 2 Computer Science 1 (4003-231)
- 2 College Algebra & Trig (1016-204)
- 2 Calculus for Engineering Tech I (1016-231)
- 2 Calculus w/ Foundations I (1016-261)
- 2 Project Based Calculus I (1016-281)
- 1 Materials & Processes of Photo (2076-212)

Frequency of Attendance at SI Sessions



Grade Distribution of SI vs. Non-SI Attendees*



* Scale indicates % of students in SI or Non-SI group receiving each letter grade
i.e. 24% of students who attended SI at least once earned an A.

1202 Eastman Building
27 Lomb Memorial Drive
Rochester, NY 14623
Phone: 585-475-5132
E-mail: www.rit.edu/aim



End of the Quarter Report 20072

Academic Intervention & Mentoring Program (AIM)

Learning Assistance Contract Students

Winter AIM Contract Students

GCCIS- 24 students
COS - 2 students
CIAS- 4 students
CAST- 4 students
COLA- 2 students
KGCOE- 9 students
TOTAL=45

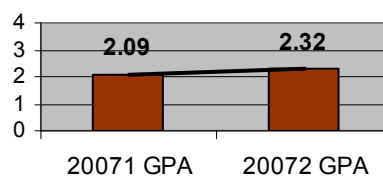
STUDENT OUTCOME SUMMARY

- 191 students invited
- 45 students signed contracts and met with the Learning Assistant three or more times
- 11 students achieved a GPA high enough to come off probation
- 4 students made Dean's List
- 25 students met the AIM requirements of a 2.0 or higher GPA and earned a C or higher in the course
- 22 students received a B or higher in the SI supported course
- 26 students attended weekly SI sessions
- 26 students qualify for summer course
- 3 students took a LOA/IW during winter

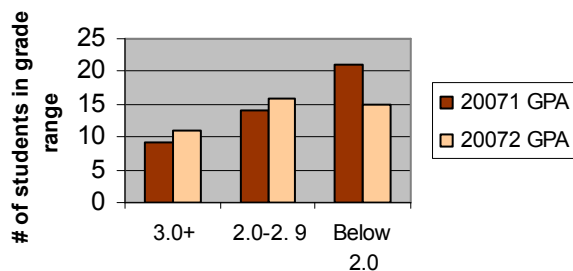
UPON COMPLETION OF WINTER

- 1 student, while making progress with AIM support, was suspended for conduct violations
- 5 students suspended by department, 4 of them went to CRP
- 28 winter AIM students plan to continue in spring. 17 will fully participate; 11 will participate with SI only

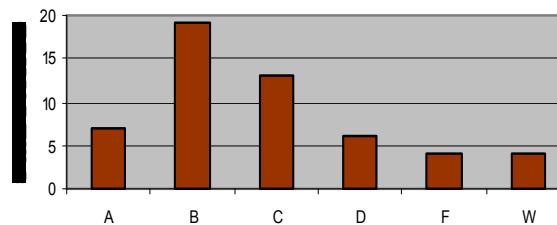
AIM Contract Student TERM GPA Average



Comparison of AIM Contract Student GPA 20071 to 20072



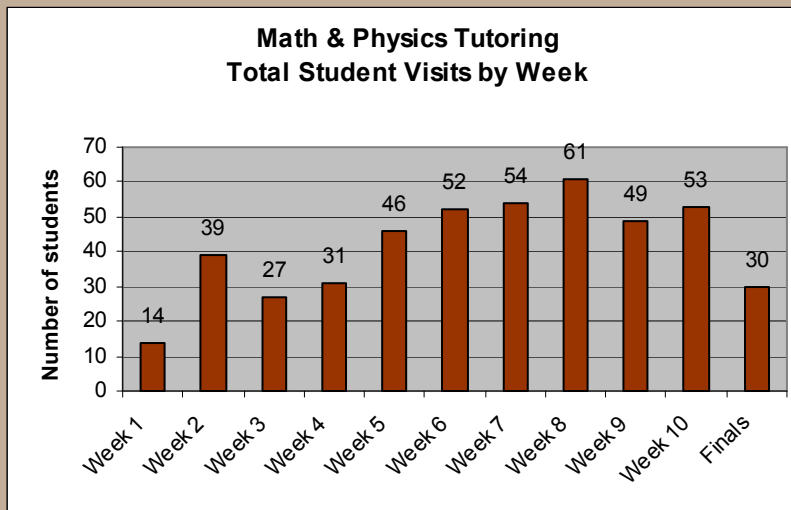
Grade Distribution of AIM Students in SI Supported Courses



End of the Quarter Report

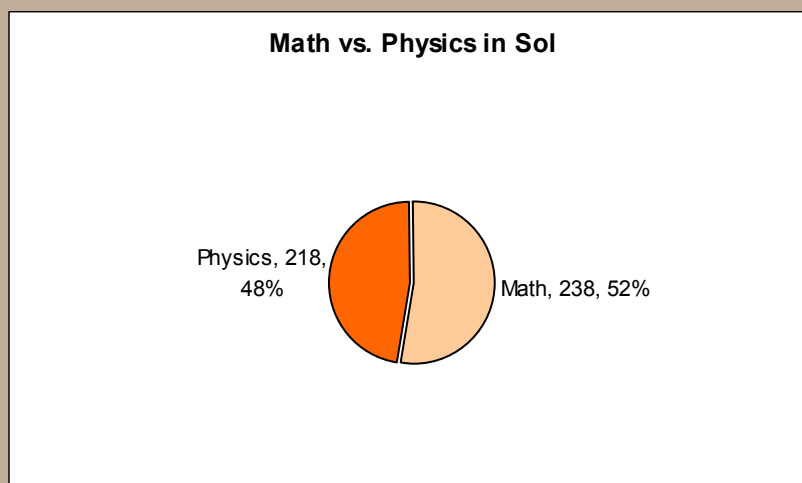
Academic Intervention & Mentoring Program (AIM)

Sol Heumann Study Center



Study Skills Workshops

- 9 sessions advertised
- 3 sessions occurred
- 5 total students attended



Writing Center

- 62.5 extra hours offered
- 65 Writing Seminar students attended

1202 Eastman Building
27 Lomb Memorial Drive
Rochester, NY 14623
Phone: 585-475-5132
E-mail: www.rit.edu/aim

