

STUDY ABROAD FOR CHINESE LANGUAGE

RIT | Global
Education
Abroad



Students majoring in Chinese must participate in an international experience before graduating:

Study Abroad

Full semester (fall or spring), academic year or a minimum 10 week long summer program (with approval from language advisor).

Co-op Abroad

Contact Maria.Richart@rit.edu in the Office of Career Services and Cooperative Education.

Other International Experiences

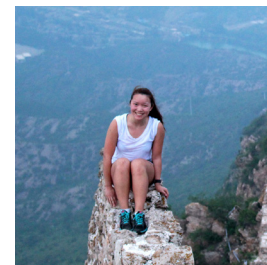
(Other than study or co-op abroad)

Students must be pre-approved by the Modern Languages & Cultures Department Chair, Hiroko Yamashita (hxygsl@rit.edu).

4 Reasons To Study A Language Abroad:

- 1) Cultural immersion is the fastest, most effective way to learn a new language leading to increased fluency. (nafsa.org)
- 2) Hearing, reading, and using your language skills on a daily basis improves your pronunciation, vocabulary and comprehension.
- 3) Gaining an understanding of the cultural origins of your host language gives a new clarity and meaning to words and sentences that once seemed abstract.
- 4) Acquiring advanced level language skills increases your value to prospective employers.

Featured Student:



Theresa McDonald
Studied Chinese
Beijing, China

"I learned so much while spending the summer in China! The courses I took were language intensive which allowed me to increase my skills quickly and my program paired us with local Chinese students so we could practice our conversation skills."



For a Culturally Immersive Experience:

Live with a local family in a home stay.

Take elective courses in the local language.

Set English aside - join clubs and other activities that provide the opportunity to interact with local students.

Participate in culturally immersive excursions.

Look for programs with internships or directed research projects.

Volunteer in the local community.

Scholarships for studying Chinese abroad:

- **CLA Global Opportunity (GO) Grant** - automatic \$500 grant for CLA majors to study abroad.
- **CLA Student Travel Fund** - up to \$750 to study abroad.
rit.edu/cla/awards-grants/cola-student-travel-fund
- **Gilman Scholarship** - For U.S. citizens who receive a Pell Grant.
gilmanscholarship.org

- **Critical Language Scholarship** - For students studying a critical language over the summer.
clscholarship.org

- **Boren Scholarship** - Supports study of less commonly taught languages (Asia). borenawards.org

Search for more scholarships at fellowships.rit.edu

Next steps:

- 1) Meet with your academic advisor to determine timing and coursework.
- 2) Login to the Compass database at studyabroad.rit.edu to search programs.

- 3) Make an appointment with a study abroad advisor to go over required application steps. Email global@rit.edu or call 585-475-4466 to make an appointment.

CHINESE LANGUAGE PROGRAMS ABROAD

Location	Term(s) Offered	Program Provider	Program	University	Program Details
RIT Programs					
Beijing, China	Fall, Spring	RIT Exchange	Beijing Jiaotong University Exchange	Beijing Jiaotong University	Six levels of Chinese language courses and business courses.
Affiliate Programs – Semester					
Beijing, China	Fall, Spring	CIEE	Advanced Chinese Studies	Peking University	Advanced level language program. Classes taught fully in Chinese.
Beijing, China	Fall, Spring	CIEE	Intensive Chinese Language	Peking University	2 courses in Chinese language (beginning to highly advanced), plus elective courses. 16 credits
Nanjing, China	Fall, Spring	CIEE	Intensive Chinese Language & Culture	Nanjing University	6 credits of Chinese language (intermediate or advanced), and two elective courses. 15- 18 credits
Shanghai, China	Fall, Spring	CIEE	Accelerated Chinese Language	East China Normal University	12 credits of Chinese language (beginning to advanced high), plus elective credit course. 15 credits
Shanghai, China	Fall, Spring	CIEE	Business, Language & Culture	East China Normal University	6 credits of Chinese language, plus two business electives. 12 credits
Shanghai, China	Fall, Spring	CIEE	China in a Global Context	East China Normal University	6 credits of Chinese language, plus two electives in East Asian studies.
Shanghai, China	Fall, Spring	IES	Shanghai Economy, Business & Society	Shanghai Jiao Tong University	6 credits in Chinese language. Supplement with area study electives taught in English. 12-15 credits
Taipei, Taiwan	Fall, Spring	CIEE	Intensive Chinese Language & Culture	National Chengchi University	12 credits of Chinese language (beginning to advanced), plus one elective. 15 credits
Affiliate Programs – Summer					
Shanghai, China	Summer	CIEE	Summer Accelerated Chinese Language	East China Normal University	10 credits of Chinese language (accelerated courses).
Beijing, China	Summer	CIEE	Summer Intensive Chinese Language	Peking University	2 Chinese language courses, plus one elective. 9-10 credits.