

Preventative home health visits are effective at controlling health care costs and curbing overutilization of healthcare services, and have the potential to reduce disparities in the utilization of healthcare services among the elderly population in Denmark.

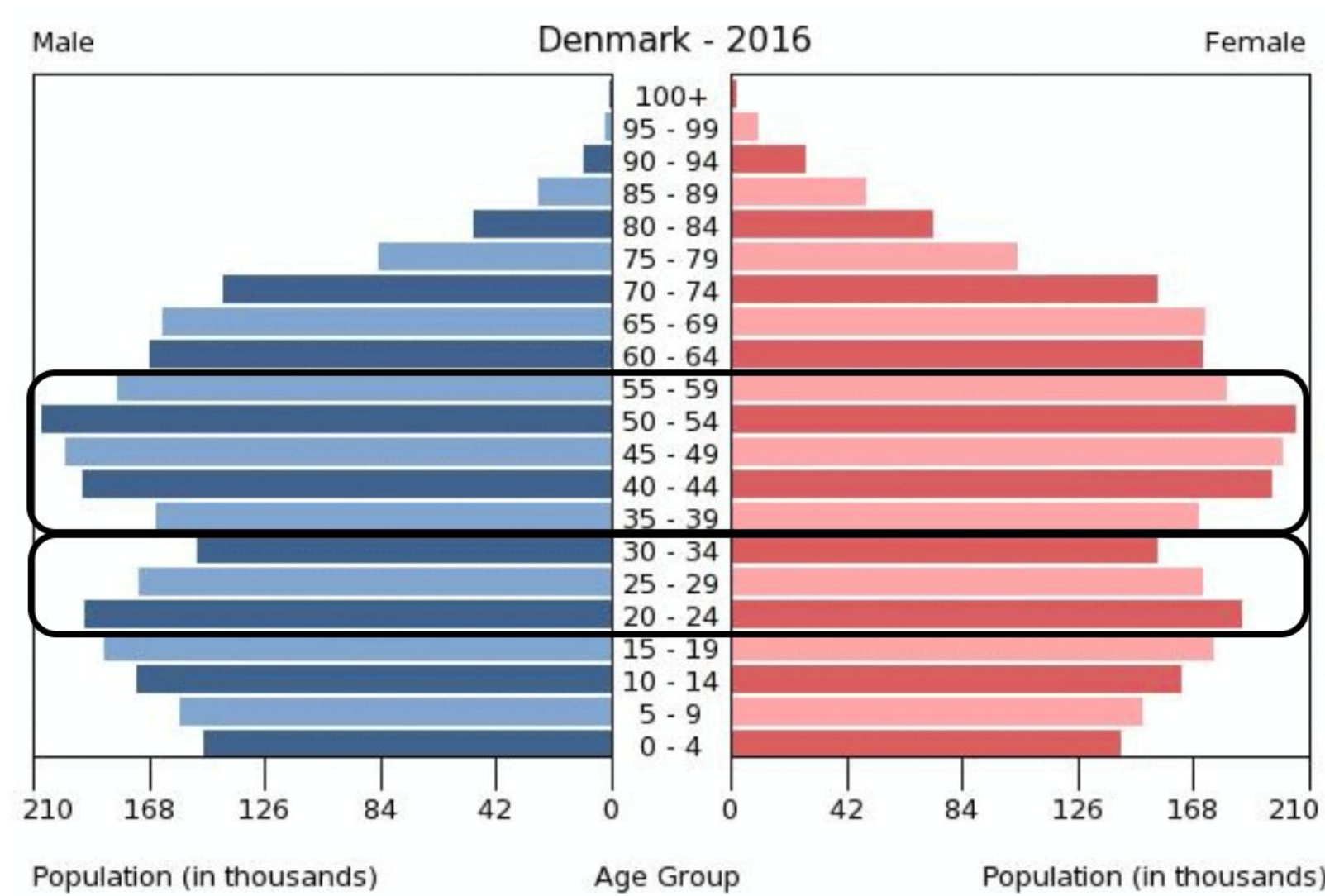
- ### Highlights
- **Cost-Related Effectiveness:**
 - **Short term:** cost-effective
 - **Long term:** not cost-effective
 - **Non Cost-Related Effectiveness:**
 - Home visits lead to **reduced hospital admission-** especially amongst **disabled population**
 - Visits are **adaptable and expandable** with increased **specialized training**
 - **Prioritization and PHV Effectiveness:**
 - A **technical approach** focuses on **specific quantitative outcomes:**
 - decreased comorbidity
 - mortality rates
 - **Disparities in Healthcare Utilization:**
 - More **direct, binding invitation** is equally accepted from **all socio-economic groups**
 - **Minority groups** are **less likely to utilize health care** due to a lack of accommodations or cultural sensitivity
 - **Prioritization and Disparities in Utilization:**
 - **Retaining a universal approach** while also **targeting those of low SES**
 - Inclusion of the input from **low SES groups** via an **institutional approach**

The Effectiveness of Preventative Home Visits for an Aging Danish Population

Miranda Montoya, Hannah Kuntz, Cassandra Fate, Maggie Pickard, & Natalie Tikhonovsky

Motivation

- ¼ of Danish citizens are 60 years or older.
- Spending on elderly care is tied for the largest share of public expenditure on all social and health services.

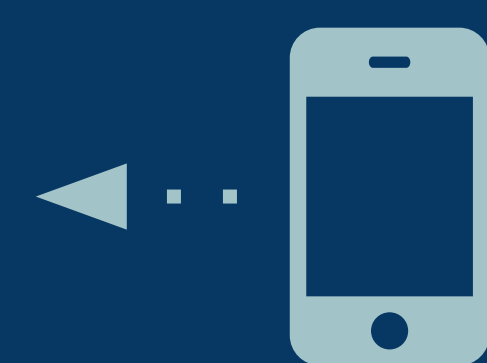
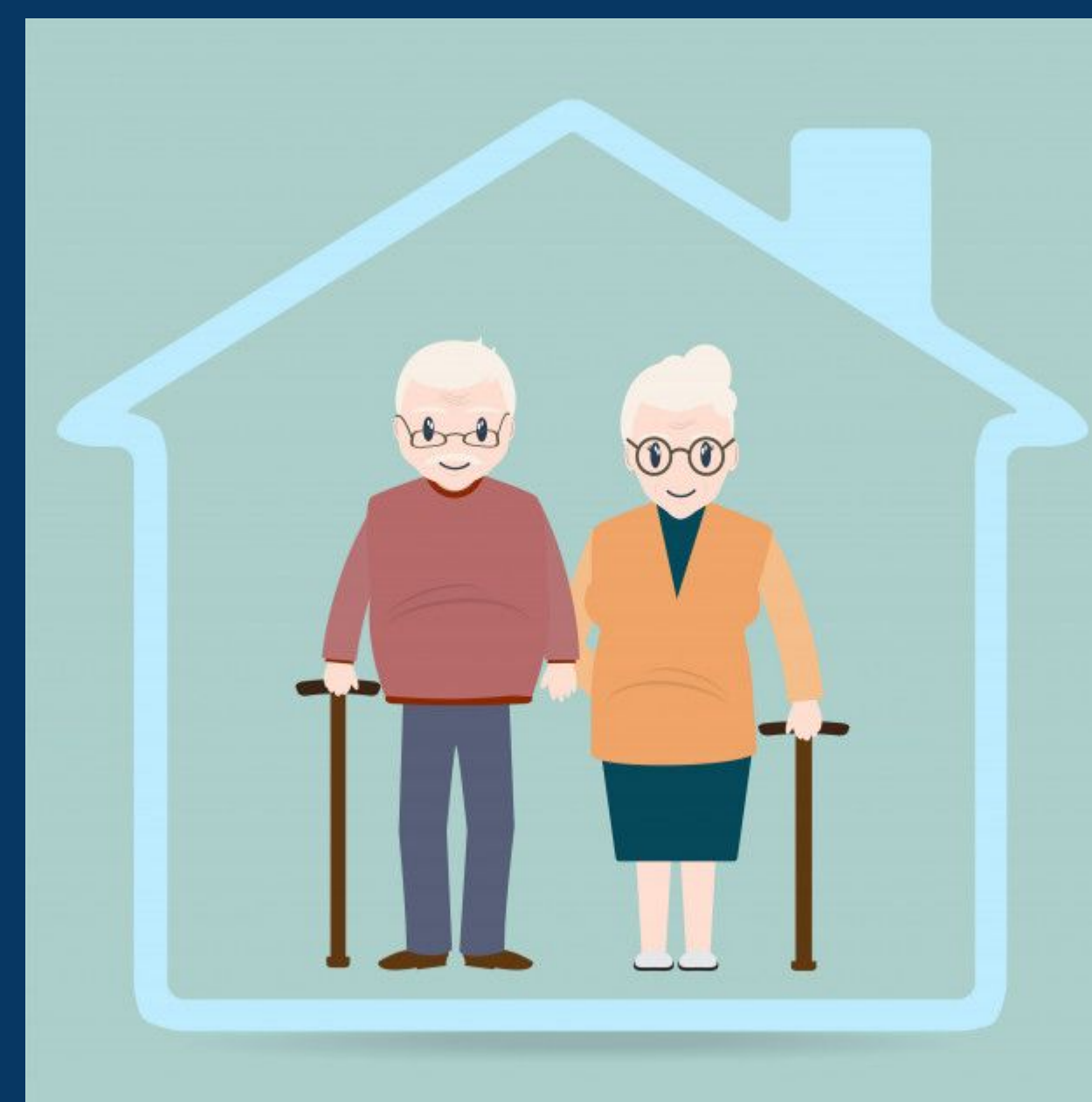


Preventative Home Visits

- Preventative Home Visits (PHVs) are provided by municipalities twice a year for elderly citizens 70+.
- Goal is to enhance citizens' quality of life and mobility and prevent costly visits to the hospital.
- PHVs are delivered by municipal health workers, who conduct a basic assessment of citizens' activity levels, home environment, health status, & medication compliance.

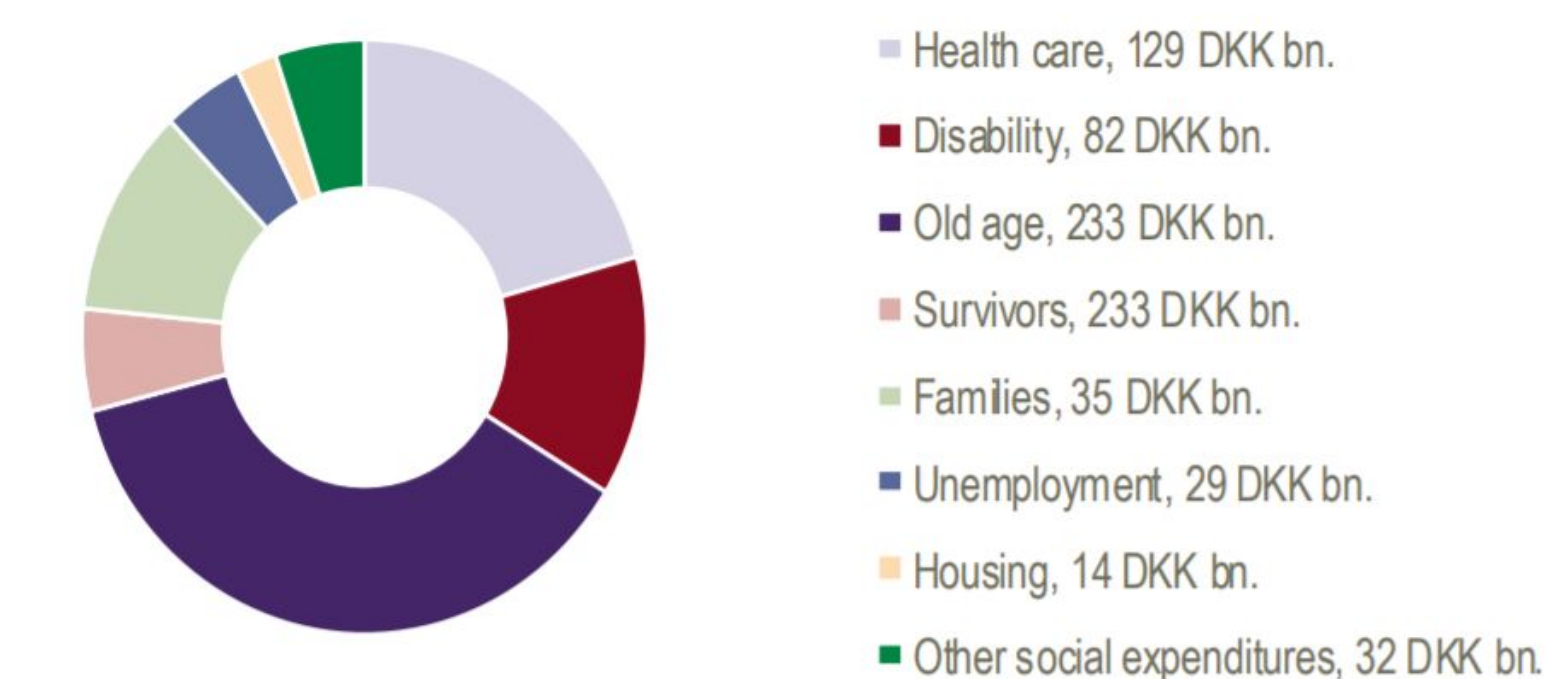
Methods

- Various scholastic search engines.
- Only sources published after 2000 were included.
- After analyzing the findings of our sources, we shaped the answer to our research question.



Take a picture to download the full paper

Expenditure on social and health services. 2016



Public Health Implications

- PHVs greatly enhance mobility, quality of life, and overall health status.
- PHVs save many scarce healthcare resources.

Future Research

- PHVs are a relatively new intervention.
- More research is to come!