

# STUDY ABROAD FOR JAPANESE LANGUAGE

RIT | Global Education Abroad



## Students majoring in Japanese must participate in an international experience before graduating:

### Study Abroad

Full semester (fall or spring), academic year or a minimum 10 week long summer program (with approval from language advisor).

### Co-op Abroad

Contact Maria.Richart@rit.edu in the Office of Career Services and Cooperative Education.

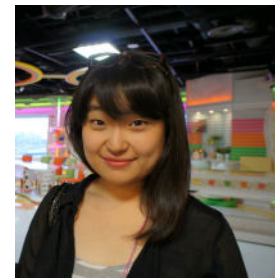
### Other International Experiences

*(Other than study or co-op abroad)*  
Must be pre-approved by the Modern Languages & Cultures Department Chair, Hiroko Yamashita (hxygs1@rit.edu).

## 4 Reasons To Study A Language Abroad:

- 1) Cultural immersion is the fastest, most effective way to learn a new language leading to increased fluency. (nafsa.org)
- 2) Hearing, reading, and using your language skills on a daily basis improves your pronunciation, vocabulary and comprehension.
- 3) Gaining an understanding of the cultural origins of your host language gives a new clarity and meaning to words and sentences that once seemed abstract.
- 4) Acquiring advanced level language skills increases your value to prospective employers.

## Featured Student:



Tomoni Takeuchi  
Studied Japanese  
Nagoya, Japan

"Spending a semester in Japan helped me improve my Japanese language skills tremendously, gave me insight into Japanese culture and will be something that will set me apart in my career."



## For a Culturally Immersive Experience:

Live with a local family in a home stay.

Take elective courses in the local language.

Set English aside - join clubs and other activities that provide the opportunity to interact with local students.

Participate in culturally immersive excursions.

Look for programs with internships or directed research projects.

## Scholarships for studying Japanese abroad:

- **CLA Global Opportunity (GO) Grant** - automatic \$500 grant for CLA majors to study abroad.
- **CLA Student Travel Fund** - up to \$750 to study abroad. [rit.edu/cla/awards-grants/cola-student-travel-fund](http://rit.edu/cla/awards-grants/cola-student-travel-fund)
- **KIT Fellowship** - RIT fellowship funded summer program at Kanazawa Institute of Technology.
- **Gilman Scholarship** - For U.S. citizens who receive a Pell Grant. [gilmanscholarship.org](http://gilmanscholarship.org)
- **Critical Language Scholarship** - For students studying a critical language over the summer. [clscholarship.org](http://clscholarship.org)
- **Boren Scholarship** - Supports study of less commonly taught languages (Asia). [borenawards.org](http://borenawards.org)

## Next steps:

1. Meet with your academic advisor to determine timing and coursework.
2. Login to the Compass database at [studyabroad.rit.edu](http://studyabroad.rit.edu) to search programs.
3. Make an appointment with a study abroad advisor to go over required application steps. Email [global@rit.edu](mailto:global@rit.edu) or call 585-475-4466 to make an appointment.

## JAPANESE LANGUAGE PROGRAMS ABROAD

| Location                             | Term(s) Offered | Program Provider | Program                                   | University                          | Program Details   | Courses for Japanese Major | Courses for Japanese Minor/Immersion |
|--------------------------------------|-----------------|------------------|---|-------------------------------------|---|----------------------------|--------------------------------------|
| <b>RIT Programs</b>                  |                 |                  |   |                                     |   |                            |                                      |
| Kanazawa, Japan                      | Summer          | RIT Exchange     | KIT Summer Program in Japanese            | Kanazawa Institute of Technology    | 6 credits, 6 weeks<br><i>Courses: Japanese language &amp; culture</i>                                   | ✓                          | ✓                                    |
| Kyoto, Japan                         | Summer          | RIT Faculty-Led  | MLC Kyoto Doshisha Summer Program         | Doshisha University                 | 6 credits, 4 weeks<br><i>Courses: Japanese language &amp; culture</i>                                   | ✓                          | ✓                                    |
| <b>Affiliate Programs - Semester</b> |                 |                  |   |                                     |   |                            |                                      |
| Akita, Japan                         | Fall, Spring    | SUNY Oswego      | Akita International University            | Akita International University      | 12-15 credits, full semester<br><i>Courses: Japanese language, culture, liberal arts &amp; business</i> |                            | ✓                                    |
| Kyoto, Japan                         | Fall, Spring    | CIS              | Semester in Japan                         | Kyoto University of Foreign Studies | 12 credits, full semester<br><i>Courses: Japanese language &amp; culture</i>                            | ✓                          | ✓                                    |
| Nagoya, Japan                        | Fall, Spring    | IES              | Nagoya Direct Enroll at Nanzan University | Nanzan University                   | 15-18 credits, full semester<br><i>Courses: Japanese language &amp; culture</i>                         | ✓                          | ✓                                    |
| Tokyo, Japan                         | Fall, Spring    | CIEE             | Arts & Sciences                           | Sophia University                   | 16 credits, full semester<br><i>Courses: Japanese language, culture &amp; elective courses</i>          | ✓                          | ✓                                    |
| <b>Affiliate Programs - Summer</b>   |                 |                  |   |                                     |   |                            |                                      |
| Tokyo, Japan                         | Summer          | CIS              | Summer in Japan                           | Seisen University                   | 3-6 credits, 2-4 weeks<br><i>Courses: Japanese language &amp; culture</i>                               |                            | ✓                                    |