

Hidden Treasure

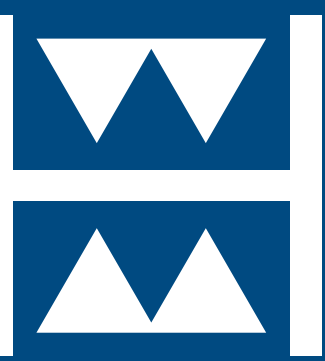
Hidden Treasure is a concept to revitalize the space under a freeway bridge on the border between Frederiksberg and the Nørrebro neighborhood of Copenhagen. The concept re-imagines the space as a local hub for cultural activities and play, enhanced by a fantasy underwater theme. The area becomes a destination for locals, with word-of-mouth spreading the word to the rest of the metro area.

The design includes solutions targeting five key areas: lighting, play structures, seating, plants, and accessibility. The bridge is used for shade, shelter, and as a key element in the design. Both custom and off-the-shelf solutions are used to control costs and construction time. Special consideration was given to ensuring the space was welcoming for women and girls. Modifications include moving existing structures, adding new ones, traffic-calming actions, and a rebranding.

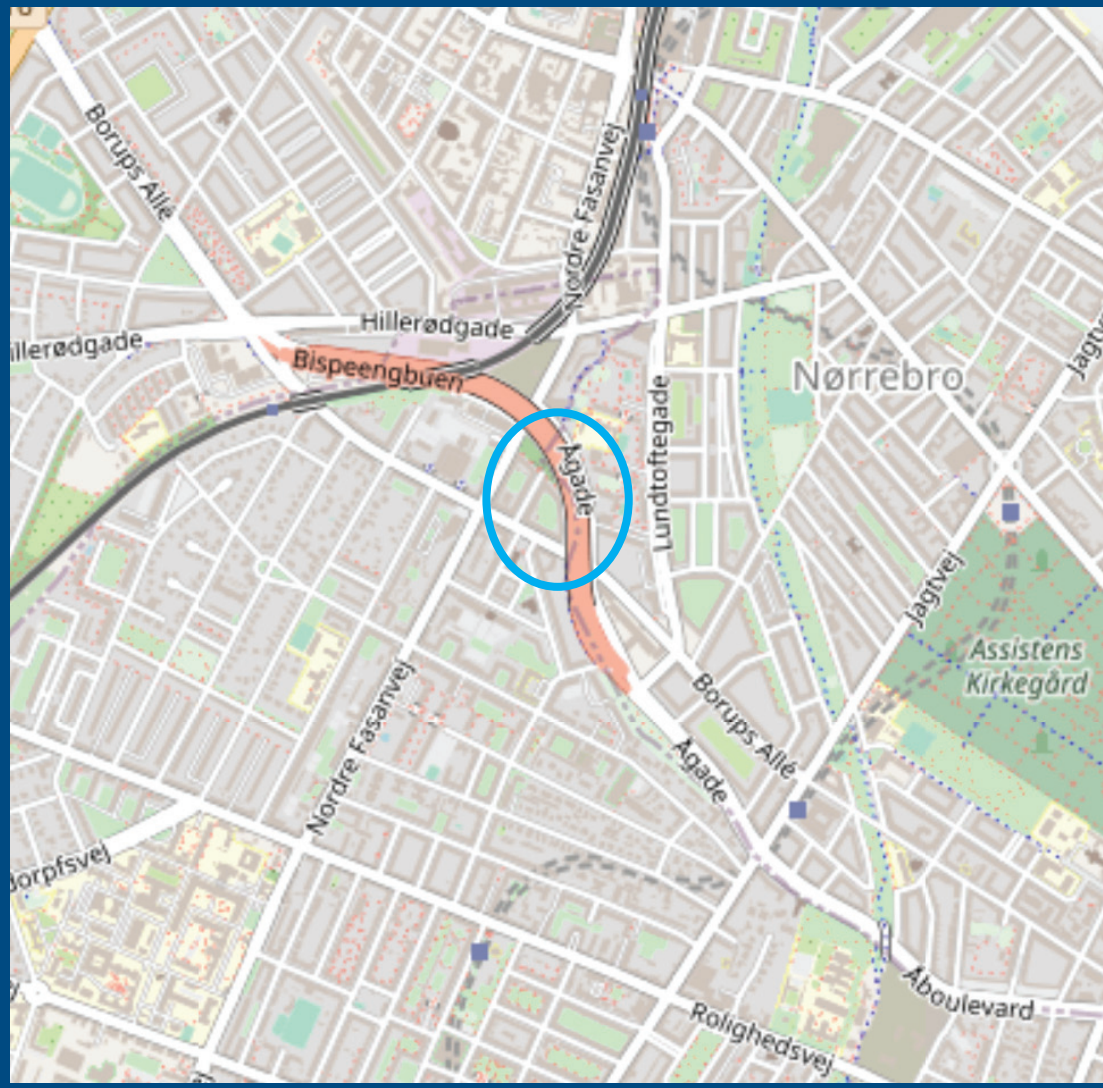
Analysis of the site focused on observations and data collection performed by all members of the class. Once these observations were collected and shared, I proceeded to distill them into my five key ideas. From there, I explored what succeeded in the current design and where improvements would be most effective. At first, I attempted to keep all existing structures in their existing position, but it became clear that moving them would be beneficial. After a few experimental layouts, I settled on the current site plan. Feedback from classmates suggested that I remove the western access road and combine it into the front lawn area. This led to the final layout shown here.

In addition to the site plan, I designed an improved lighting scheme to make the site feel safer at night. I also wanted to use lights and overhead elements for theming and wayfinding. This led to the combination of utility lights and decorative lights seen in the lighting plan. I also expanded existing light implementations, like the upward-facing lights that use the bridge structure as a diffuser, to the rest of the space.

An Urban Design Concept by Mike Hodgkiss
Prepared for Urban 13 and DIS Urban Design Studio
2022 – Copenhagen, DK



Actual location:

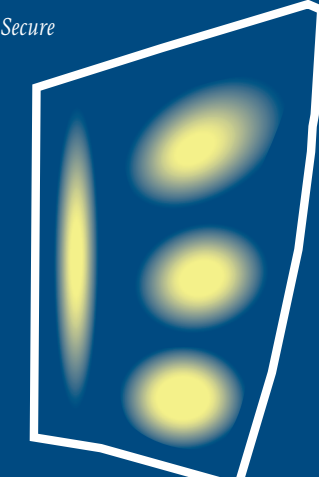


Layout Concept:



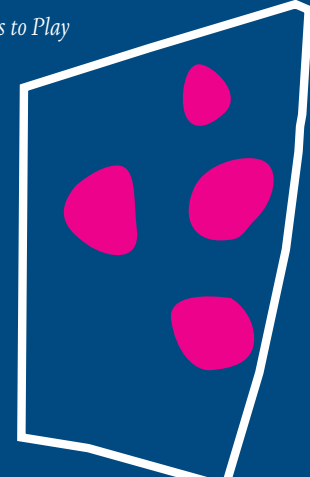
Bright

Soft, Warm, Secure



Fun

Chances to Play



Green

Extensive Planting



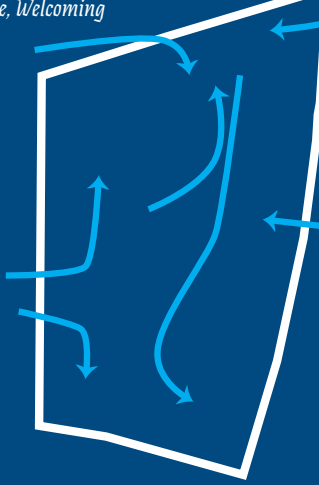
Comfortable

Shelter and Seating



Accessible

Barrier Free, Welcoming



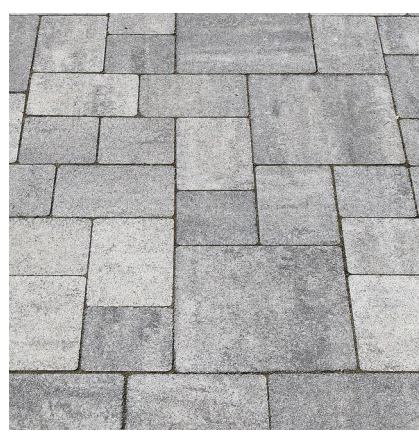
Surface Materials:



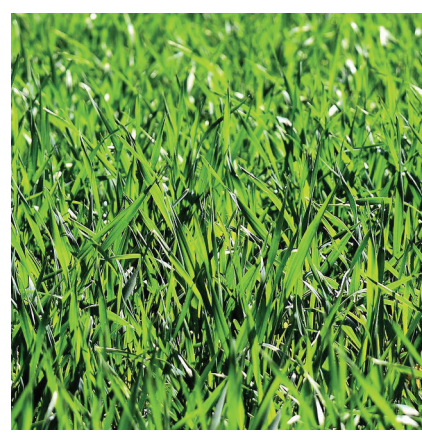
Cobblestone



Stone Road



Paving Stones



Grass



Poured-in-Place Rubber

