

Explore your passions while finding your people.

the community

The community at RIT stands apart through its **unique blend of creative and technical disciplines**, where scientists, engineers, computing specialists, and entrepreneurs collaborate alongside designers, artists, photographers, and filmmakers. **This interdisciplinary environment fosters innovation** as students from vastly different fields come together to tackle challenges and explore new possibilities.

At RIT, **breakthroughs happen in teams**. You won't just learn from our leading faculty: you'll join them as partners in discovery, research, and innovation. From robotics labs and digital fabrication studios to immersive media theaters and clean rooms, you'll have access to the minds and facilities that support your ideas. You'll use the same tools and tech that are powering the industries you're preparing to lead. There's a reason we're home to **16 research centers and institutes** and earned more than **\$100 million in sponsored research last year**; we're always on to something extraordinary.

300+

Organizations and Clubs

30+ 24

Competitive and non-competitive intramural sports
NCAA Division I and III Athletic Teams

life in the fast lane

Baja Racing, Formula SAE, Hot Wheelz Solar Racing and, so much more!
rit.edu/clubs-and-experiences



the housing

Video Tour

13

First-Year Residence Halls and RIT Inn

Special Interest Housing

House of General Science
Computer Science House
Engineering House
House of the Arts
Unity House



16,900

students at the Rochester, NY campus

100+

Countries represented in the student body

13:1

Student-to-faculty ratio



Admissions

Graduate

Each degree differs in its admit terms, deadlines, application requirements, and more. Please see the program website for details and information on rolling admissions and priority deadlines.

rit.edu/grad

Applicant materials may include:

- Academic documents (transcripts, degree certificates)
- Personal Statement
- Resume/CV
- If proof of English proficiency is required: Duolingo (DET), IELTS Academic/IELTS Academic Online, LanguageCert Academic (LC), PTE Academic, TOEFL iBT® and TOEFL iBT® Home Edition scores, or the RIT English Language Proficiency Test
- Additional requirements (varies by program): GRE or GMAT, letters of recommendation, writing samples, portfolio
- Application fee of \$65

Cost of Attendance

Graduate tuition varies by degree, the number of credits taken per semester, and delivery method.

On-Campus Graduate Study Academic Year 2025-26 (2 semesters)

Average course load: 9-12 credits

	9 Credit Hours	12-18 Credit Hours
Tuition	\$46,332	\$61,762
Student Activity Fee	\$430	\$430
Student Health Services Fee	\$600	\$600
Estimated Living Expenses	\$16,750	\$16,750
Estimated costs for books, supplies, transportation, loan origination, and other personal expenses*	\$3,016	\$3,016
Total Estimated Cost of Attendance	\$67,128	\$82,558

* More details on estimates and information about health insurance coverage can be found on rit.edu/admissions/tuition-and-fees

Per Credit Hour Rate

On-campus graduate students enrolled in less than 12 credits (1 to 11) are charged the per credit hour rate of \$2,574.

Online Graduate Study

Designated online graduate programs are assessed a discounted tuition rate of \$1,466 per credit hour.

rit.edu/admissions/online

Undergraduate

The admission process at RIT is about you. Each application is reviewed for the strength of academic preparation, performance, and counselor recommendations. We seek applicants from a variety of backgrounds with a range of experiences preparing them for study at RIT.

rit.edu/admissions

English Testing

Test Type	Minimum Score for Direct Admission
Internet-Based TOEFL (iBT)*	79
IELTS*	6.5
PTE Academic	58
Duolingo	120
LanguageCert Academic	22

Students below the minimum will be considered for conditional admission.

*If students do not submit TOEFL or IELTS scores, they must take the RIT English Language Proficiency Test to test out of the English language courses. For more information, visit rit.edu/studentaffairs/elc/test-dates.

Cost of Attendance

All international students are considered for merit-based scholarships.

Undergraduate Cost of Attendance	2025-2026 Academic Year
Tuition	\$60,774
Housing (double room)	\$9,700
Food (standard meal plan)	\$7,050
Fees	\$1,030
Total	\$78,554

Application Deadlines

Early Decision I – November 1

Early Decision II – January 1

Early Action – November 1

Regular Decision – January 15

Learn more today!



RIT

Rochester Institute of Technology

Bausch & Lomb Center
60 Lomb Memorial Drive
Rochester, NY 14623-5604
admissions@rit.edu



RIT Nondiscrimination Notice can be found here: rit.edu/nondiscrimination

9/26-CNR

©2025 Rochester Institute of Technology.
All rights reserved. RIT is a registered trademark of Rochester Institute of Technology.

International

Global.
Experiential.
Customizable.

GUIDE
2025-26



RIT

 | Rochester Institute of Technology

Undergraduate Degree Programs

#11 Top Animation
BFA Degree
Animation Career Review, 2025

Art and Design

3D Digital Design
3D Visualization option
Game Arts option
Graphic Design
Illustration
Industrial Design
Interior Design
Medical Illustration
New Media Design
Studio Arts
Ceramics option
Furniture Design option
Glass option
Metals and Jewelry Design option
Painting option
Printmaking option
Sculpture and Expanded Forms option

Business and Management

Accounting
Community Development and Inclusive Leadership
Economics
Finance
Global Business Management
Hospitality and Tourism Management
Management Information Systems (MIS)
Marketing
Supply Chain Management

Communications and Digital Media

Advertising and Public Relations
ASL–English Interpretation
Communication
Journalism option
Graphic Design
New Media Design
New Media Interactive Development

Computing and Information Sciences

Bioinformatics and Computational Biology
Computational Mathematics
Computer Engineering
Artificial Intelligence option
Secure Systems option
Computer Engineering Technology
Audio option
Wireless Communications option
Computer Science
Computing and Information Technologies

#18 Cybersecurity
U.S. News & World
Report, 2025

Environmental Studies and Sustainability

Cybersecurity
Game Design and Development
Human- Centered Computing
Humanities, Computing, and Design
Management Information Systems (MIS)
New Media Design
New Media Interactive Development
Software Engineering

Environmental Studies and Sustainability

Civil Engineering Technology
Electrical Engineering
Clean and Renewable Energy option
Environmental Science
Environmental Sustainability, Health and Safety
Mechanical Engineering
Energy and Environment option

Engineering and Engineering Technology

Biomedical Engineering
Chemical Engineering
Civil Engineering Technology
Computer Engineering
Artificial Intelligence option
Secure Systems option
Computer Engineering Technology
Audio option
Wireless Communications option

Electrical Engineering
Artificial Intelligence option
Clean and Renewable Energy option
Computer Engineering option
Microelectronics option
Robotics option

Electrical Engineering Technology
Audio option
Wireless Communications option

Imaging Science
Industrial Engineering
Ergonomics option
Lean Six Sigma option
Manufacturing option
Supply Chain Management option

Mechanical Engineering
Aerospace Engineering option
Automotive Engineering option
Bioengineering option
Energy and Environment option

Mechanical Engineering Technology
Product Design option
Robotics and Automation option

Mechatronics Engineering Technology

Microelectronic Engineering
Audio option
Packaging Science

Robotics and Manufacturing Engineering Technology

Software Engineering

#6 Top 50 Game Design
Undergraduate
Princeton Review, 2025

Game Design, Development, and Arts

3D Digital Design
3D Visualization option
Game Arts option
Film and Animation
Animation option
Game Design and Development
Illustration
New Media Interactive Development

Health Professions and Medical Sciences

Bioinformatics and Computational Biology
Biology
Biomedical Sciences
Biotechnology and Molecular Bioscience
Diagnostic Medical Sonography (Ultrasound)
Exercise Science
Global Public Health
Medical Illustration
Neuroscience
Nutritional Sciences
Physician Assistant (BS/MS)

Humanities and Social Sciences

Applied Modern Language and Culture
Chinese option
French option
Japanese option
Spanish option

ASL–English Interpretation
Community Development and Inclusive Leadership
Criminal Justice

Economics
English
Global Futures
History
Human- Centered Computing
Humanities, Computing, and Design
Individualized Program

Museum Studies
Philosophy
Political Science

Psychology
Sociology and Anthropology

Women's, Gender, and Sexuality Studies
--

rit.edu/study/undergraduate



#22 Top Film Schools
The Hollywood Reporter, 2025

Science and Math

Applied Mathematics
Applied Statistics and Data Analytics
Biochemistry
Bioinformatics and Computational Biology
Biology
Biomedical Engineering
Biomedical Sciences
Biotechnology and Molecular Bioscience
Chemistry
Computational Mathematics
Imaging Science
Motion Picture Science
Neuroscience
Photographic Sciences
Physics

Photography, Film, and Animation

Film and Animation
Animation option
Production option
Motion Picture Science
Photographic and Imaging Arts
Advertising Photography option
Fine Art Photography option
Photojournalism option
Visual Media option
Photographic Sciences

Undeclared and Individualized Study

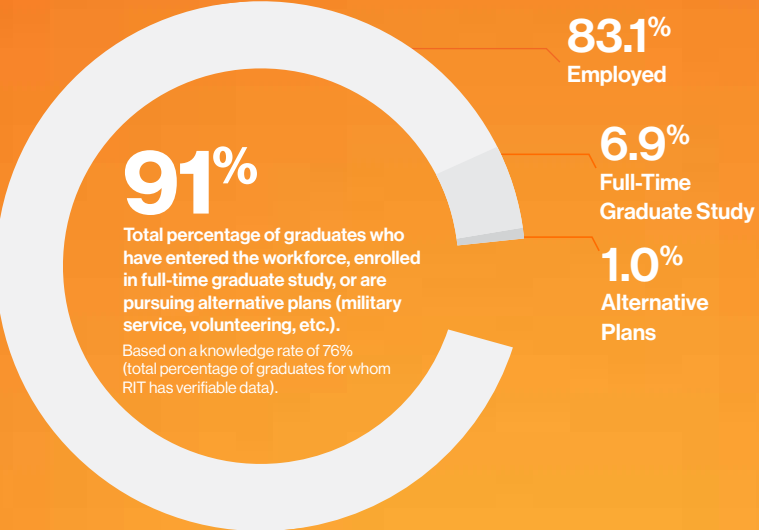
Business Exploration
Computing Exploration
Engineering Exploration
Engineering Technology Exploration
Individualized Program
Liberal Arts Exploration
Photographic Arts and Sciences Exploration
Studio Arts Exploration

Pre-Professional Programs

Pre-Med/Pre-Health Advising
Pre-Law Advising
Pre-Vet Advising

Information is correct at time of printing.

Class of 2024 Outcomes



83.1%
Employed

6.9%
Full-Time Graduate Study

1.0%
Alternative Plans

RIT Average Starting Salaries

\$76,500
RIT Bachelor's Degree Earners

\$87,200
RIT Master's Degree Earners

2K+
Hiring organizations are in 49 states and 25 countries abroad

\$66M
Total earned annually by RIT students on co-op

#6 Top Schools for Co-op or Internship Programs

U.S. News & World Report, 2025

Employer Partners

A sampling of our employer partners that hire RIT students for co-op and full-time employment:

Amazon	L3Harris Technologies
Apple	Lockheed Martin
EPIC	Microsoft
GE Aerospace	Paychex Inc.
Google	Procter & Gamble
Hasbro	Tesla
Johnson & Johnson	

What's co-op?

Co-op (cooperative education) is significant paid, full-time work that directly relates to your major

91% of RIT programs have a required or optional co-op component

Tuition-free



May Ren
Beijing, China
Industrial Design BFA
Co-op/Internship: Fisher-Price

Sanketh Moudgalya

Bangalore, India
Electrical Engineering MS,
Imaging Science Ph.D.
Co-op/Internship: Philips,
Los Alamos National
Laboratory and
Kodak Alaris

Selma Peña

Mexico City, Mexico
Film and Animation MFA
Co-op/Internship: Academy of
Television Arts & Sciences

Graduate Degree Programs

rit.edu/study/graduate



Online option available
 Online exclusively
 Spring start (January) eligible

Art, Design, and Architecture

Architecture (M.Arch.)
Ceramics (MFA)
Fine Arts Studio (MFA)
Furniture Design (MFA)
Glass (MFA)
Industrial Design (MFA)
Medical Illustration (MFA)
Metals and Jewelry Design (MFA)
Visual Arts–All Grades (Art Education) (MST)
Visual Communication Design (MFA)

Business and Management

Accounting and Analytics (MS)
Accounting and Financial Analytics Adv. Cert.)
Applied Statistics (MS)
Big Data Analytics (Adv. Cert.)
Business Administration (MBA, Ph.D.)
Business Administration–Executive (MBA)

Business Administration–Online Executive (MBA)
Business Analytics (MS)
Data Science (MS)
Engineering Management (MS)
Environmental, Health and Safety Management (MS)
Finance (MS)

Global Supply Chain Management (MS)
Hospitality Business Management (MS)
Lean Six Sigma (Adv. Cert.)
Manufacturing Leadership (MS)
Organizational Leadership and Innovation (MS)
Product Development (MS)
Project Management (Adv. Cert., MS)
Smart Cities Construction Management (MS)

Technology Entrepreneurship (Adv. Cert.)
Technology Innovation Management and Entrepreneurship (MS)
Workplace Learning and Instruction (Adv. Cert.)

Communications and Digital Media

Communication (MS)
Health Care Interpretation (MS)
Visual Communication Design (MFA)

Computing and Information Sciences

Artificial Intelligence in Computer Science (Adv. Cert.)
Artificial Intelligence (MS)
Applied and Computational Mathematics (MS)
Big Data Analytics (Adv. Cert.)
Bioinformatics (MS)
Cognitive Science (Ph.D.)

Communication Networks (MS)
Computer Engineering (MS)
Computer Science (MS)
Computing and Information Sciences (Ph.D.)
Cybersecurity (MS, Adv. Cert.)
Data Science (MS)

Electrical and Computer Engineering (Ph.D.)
Game Design and Development (MS)
Human-Computer Interaction (MS)
Imaging Science (MS)
Information Technology and Analytics (MS)
Software Engineering (MS)
Visual Communication Design (MFA)
Web Development (Adv. Cert.)

Engineering and Engineering Technology

Architecture (M.Arch.)
Biomedical and Chemical Engineering (Ph.D.)
Biomedical Engineering (MS)
Chemical Engineering (MS)
Communication Networks (MS)
Computer Engineering (MS)
Electrical and Computer Engineering (Ph.D.)
Electrical Engineering (MS)
Engineering Management (MS)
Engineering Psychology (Adv. Cert.)
Environmental, Health and Safety Management (MS)
Imaging Science (MS)

Industrial and Systems Engineering (MS)
Lean Six Sigma (Adv. Cert.)
Manufacturing Leadership (MS)
Materials Science and Engineering (Adv. Cert., MS)
Mechanical Engineering (ME, MS)
Mechanical and Industrial Engineering (Ph.D.)
Mechatronics and Mechanical Systems (MS)

Microelectronic Engineering (MS)
Microsystems Engineering (Ph.D.)
Packaging Science (MS)
Product Development (MS)
Smart Cities Construction Management (MS)

Software Engineering (MS)
Sustainable Systems (MS)
Vibrations (Adv. Cert.)

Environmental Studies and Sustainability

Architecture (M.Arch.)
Environmental Science (MS)
Environmental, Health and Safety Management (MS)
Packaging Science (MS)
Sustainability (Ph.D.)
Sustainable Systems (MS)

Game Design, Development, and Arts

Film and Animation (MFA)
Game Design and Development (MS)
Human-Computer Interaction (MS)
Visual Communication Design (MFA)

Health Professions and Medical Sciences

Bioinformatics (MS)
Biomedical and Chemical Engineering (Ph.D.)
Biomedical Engineering (MS)
Dietetics and Nutrition (MS)
Health and Well-Being Management (MS)
Health Care Interpretation (MS)
Medical Illustration (MFA)
Occupational Therapy (Doctorate)

Humanities, Social Sciences, and Education

Artificial Intelligence (MS)
Cognitive Science (Ph.D.)
Communication (MS)
Criminal Justice (MS)
Deaf Education (MS)
Engineering Psychology (Adv. Cert.)
Environmental Science (MS)
Experimental Psychology (MS)

Health Care Interpretation (MS)
Human-Computer Interaction (MS)
Science, Technology, and Public Policy (MS)
Visual Arts–All Grades (Art Education) (MST)
Workplace Learning and Instruction (Adv. Cert.)

Individualized Study

Professional Studies (MS)

Photography, Film, and Animation

Film and Animation (MFA)
Photography and Related Media (MFA)

Science and Math

Applied and Computational Mathematics (MS)
Applied Statistics (Adv. Cert., MS)
Astrophysical Sciences and Technology (MS, Ph.D.)
Bioinformatics (MS)
Chemistry (MS)
Cognitive Science (Ph.D.)
Color Science (MS, Ph.D.)
Data Science (MS)

Environmental, Health and Safety Management (MS)
Environmental Science (MS)
Imaging Science (MS)
Materials Science and Engineering (Adv. Cert., MS)
Mathematical Modeling (Ph.D.)
Packaging Science (MS)

Physics (MS)
Sustainability (Ph.D.)
Sustainable Systems (MS)

Doctoral Programs

Astrophysical Sciences and Technology (Ph.D.)
Biomedical and Chemical Engineering (Ph.D.)
Business Administration (Ph.D.)
Cognitive Science (Ph.D.)
Color Science (Ph.D.)
Computing and Information Sciences (Ph.D.)
Electrical and Computer Engineering (Ph.D.)
Imaging Science (Ph.D.)
Mathematical Modeling (Ph.D.)
Mechanical and Industrial Engineering (Ph.D.)
Microsystems Engineering (Ph.D.)
Occupational Therapy (OTD)
Physics (Ph.D.)
Sustainability (Ph.D.)

#3 Game Design Master's Degrees
Animation Career Review, 2025

#9 Animation MFA Degrees
Animation Career Review, 2025

#9 Best Online MBA Programs
U.S. News & World Report, 2025

#33 Best Analytics Graduate Programs
U.S. News & World Report, 2022

#63 Best Engineering Graduate Schools
U.S. News & World Report, 2025