

# Department of Packaging Science



## Open House Online



Changfeng Ge  
Professor and Graduate Director



*Stefanie Soroka*  
*Senior Academic Advisor*



*Mandie Kinggelhoffer*  
*Assistant director,*  
*Graduate admission*

# Packaging Science @ RIT

## What do we do?

- Design
- Develop
- Evaluate
- Improve
- Packages
- Products
- Materials
- Brands

# Sustainable Packaging Design, Development, Research

**Nancy Yang**  
**PACKAGING FOR END USE**

**R·I·T**

**Wegmans Organic**

**Current Family Pack**

**New Family Pack**

**New Shipper**

**18.2% more boxes per pallet**

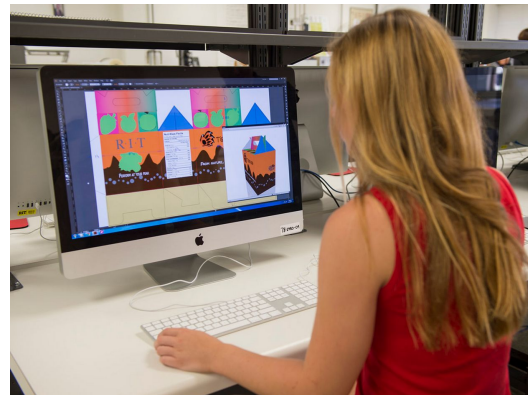
**11.7% less package product ratio**

**19.7% less materials**

**100.0% more yogurts per pallet**

**25.6% less package product Ratio**

**Overall Dimension (in)**  
11.8" x 8.9" x 10.08 (New Design)  
13.0" x 10.0" x 11.30 (Current)



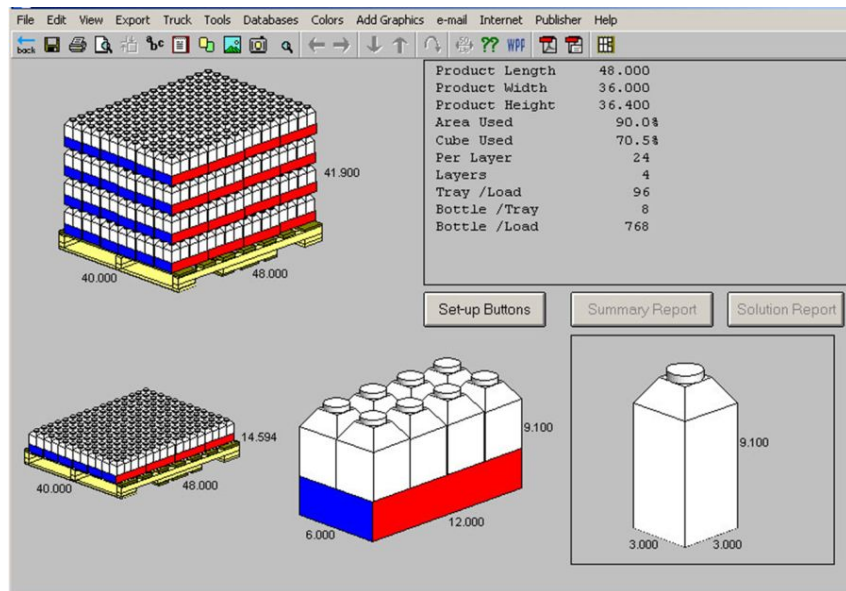


# Where Does Packaging Need to Perform?

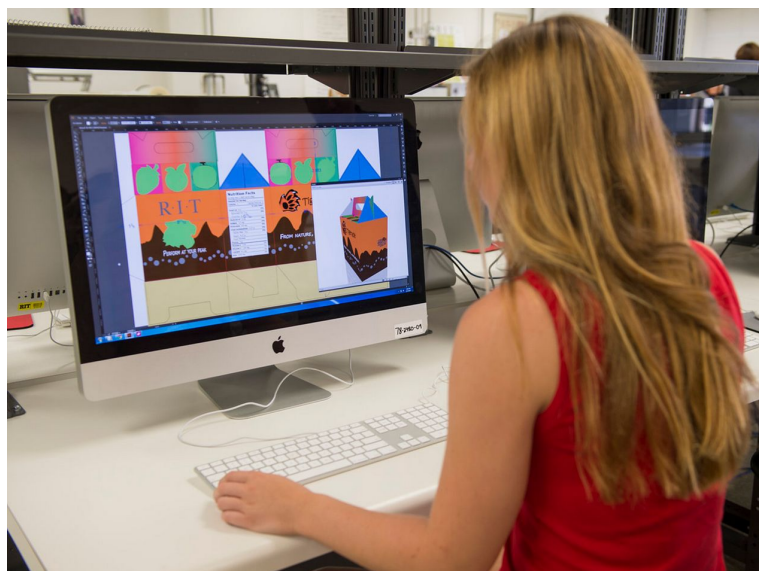
- Production
- Storage
- Distribution/Shipping
- Sale
- Use
- Renewal

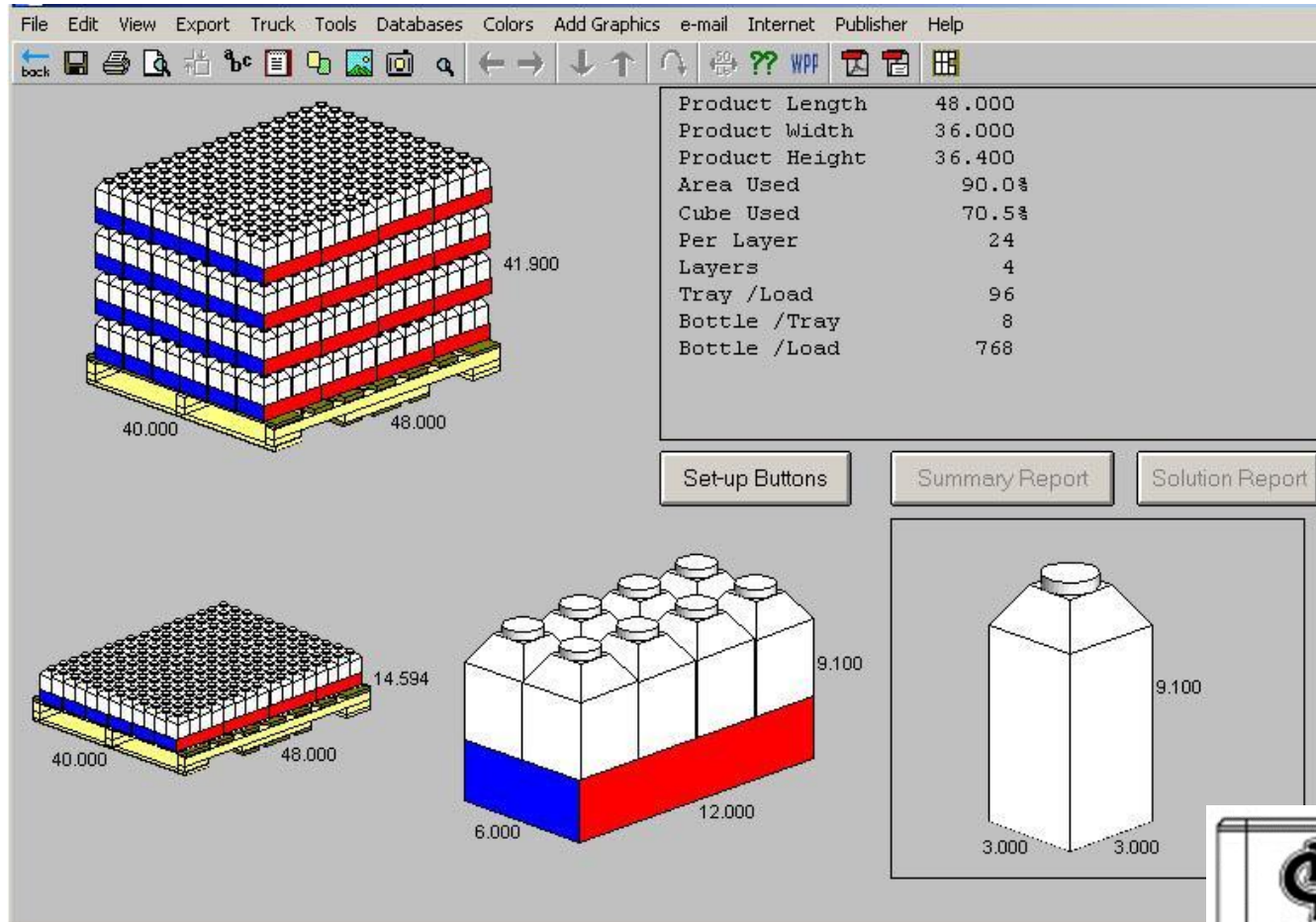




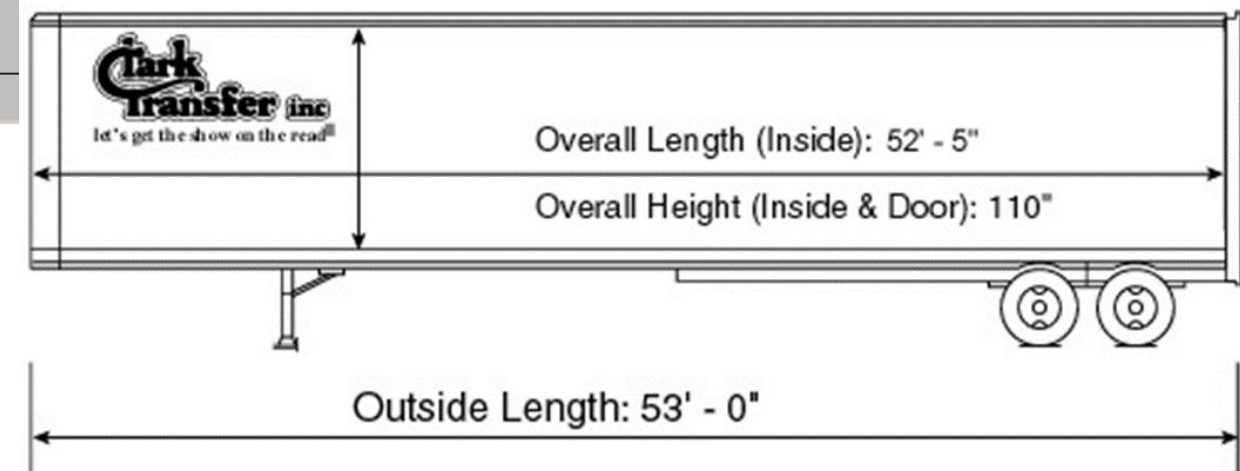


# Packaging Design & Development



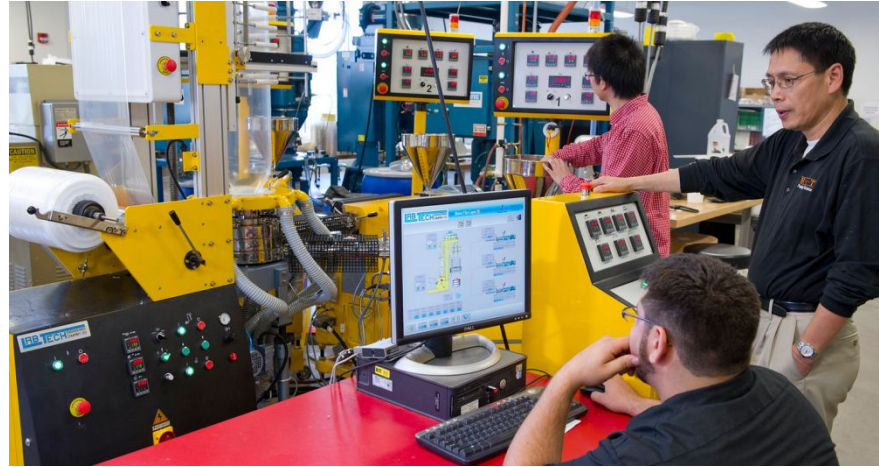


# Packaging Design & Development





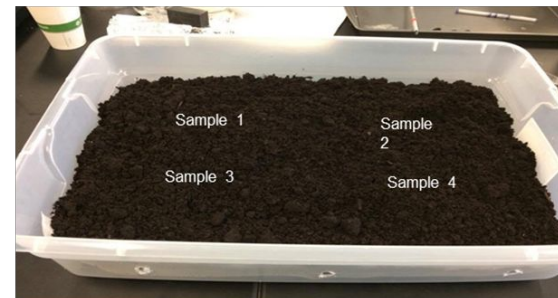
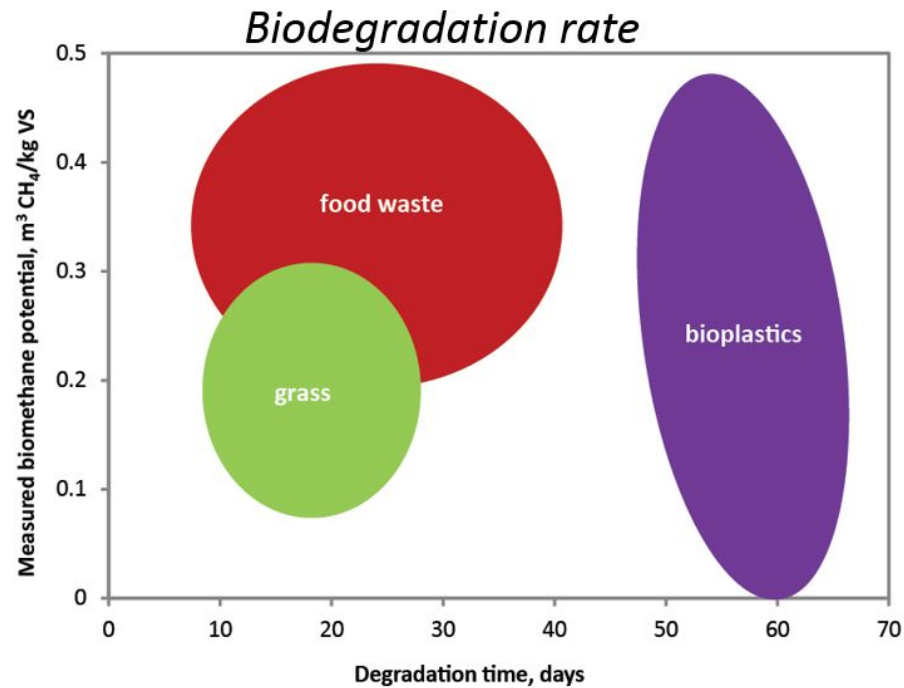
# Materials Development & Testing





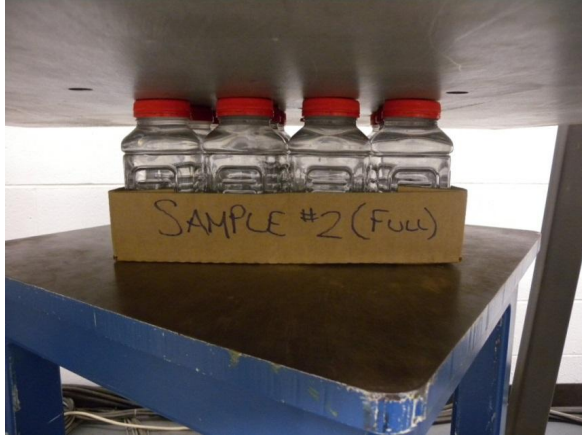
# Materials Development & Testing

- Creating Biodegradable Packaging to Collect Compostable Food Waste





# Protective Packaging / Distribution Testing



Certified to perform ISTA 6  
(Amazon) E-Commerce Test

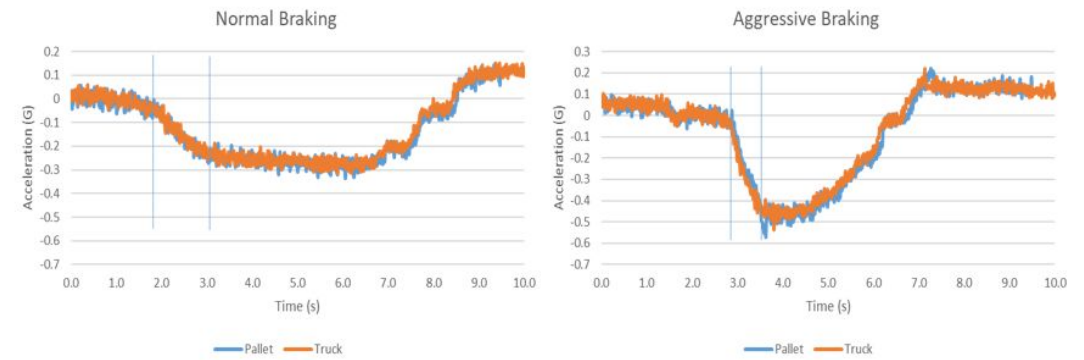




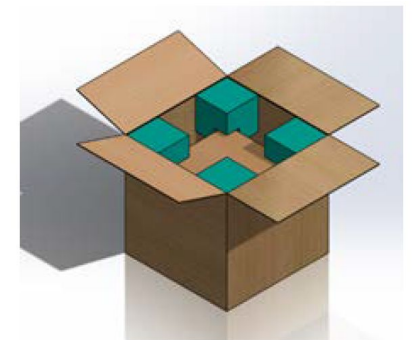
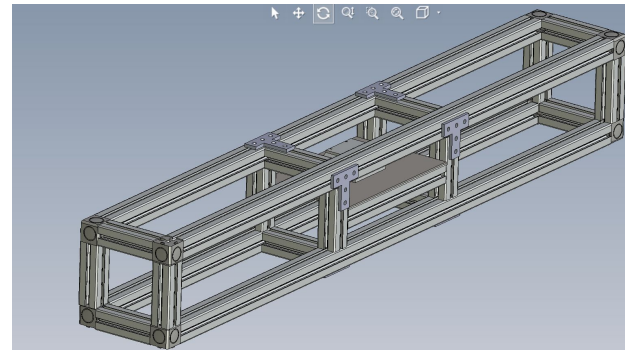
# Measurement of Transport Environment



Characterization of horizontal acceleration occurring during braking and turning events



Effect of packaged product size and weight on the frequency of drops during small parcel shipping





## PACKAGING SCIENCE TEAM

**Daniel Johnson**, *Department Chair*

**Carlos A. Diaz**, *Associate Professor*

**Shauna Newcomb**, *Coop-Career Advisor*

**Changfeng Ge**, *Graduate Program Chair*

**Kyle Dunno**, *Assistant Professor*

**Stefanie Soroka**, *Senior Academic Advisor*

**Karen Proctor**, *Professor*

**Alexis Rich**, *Lecturer – Lab Manager*

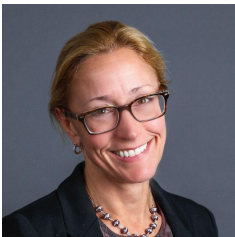
**Erin Aaron**, *Sr. Staff Assistant*

**Deanna Jacobs**, *Emeritus Professor*

**Georgios Koutsimanis**, *Lecturer*

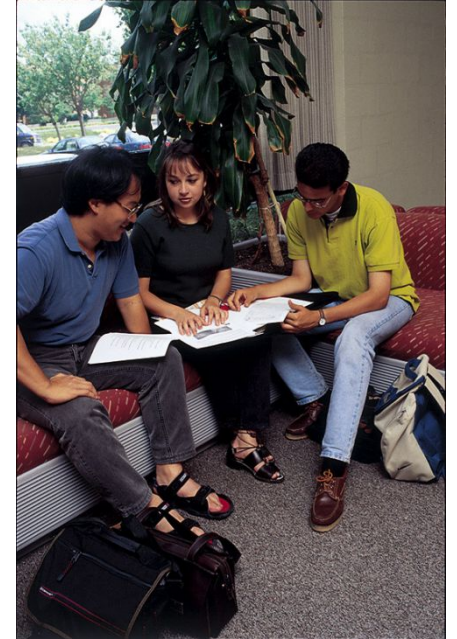
**Katie Coyne**, *Alumni Relations*

**Barbara (BJ) Hoerner**, *Corporate Relations*



# Academic and Career Support

- **Academic Support Center**
  - Writing Lab / Math Center / Study Skills
- **Bates Study Center**
  - Math / Physics / Chemistry / Biology
- **Instructors, Program Chairs / Dept Chairs / Office Staff**
- **Women in Technology**
- **Coop and Career Services**
  - Coop Prep Course and Job Search
- **Job Fairs, Specialized Tutoring, Recitation Sections, Lab Teams**
- **Learning Communities and Colleagues**
- **Your Advisor**

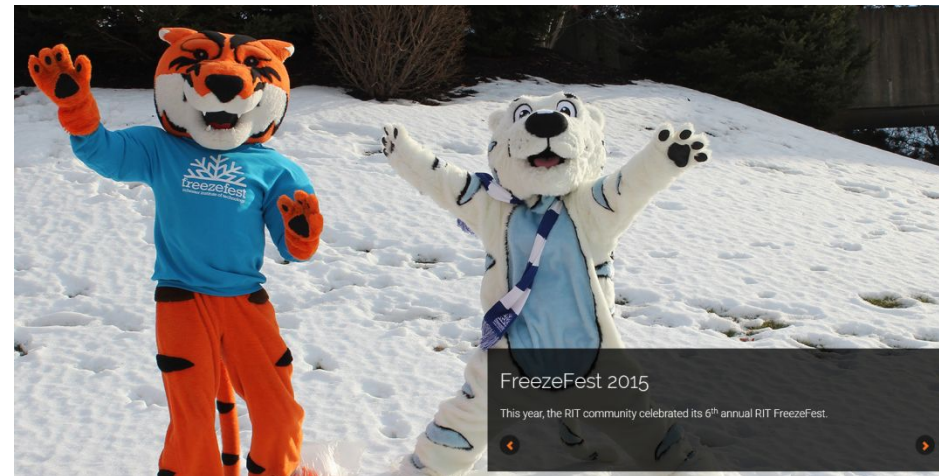


Not Sure where to go? Ask Your Advisor!



# Student Clubs and Activities

- Packaging Students
  - Institute of Packaging Professionals
  - 20-30 Students to Pack EXPO (Chicago or Las Vegas)
  - Packaging School Jamboree (Michigan State, Clemson Etc)
  - Plant Tours, Socials, Career Fair Arrangements
- Other Clubs
  - Geocachers
  - Habitat for Humanity
  - Humans vs Zombies
  - Juggling Club
  - KanJam
  - Kendo Club
  - Motorbike Club
  - Outing Club
  - Ukulele Club
  - Yoga Club
  - Roller Hockey
  - Rugby
  - Sailing Club
  - Tae Kwon Do Club
  - Beard Enthusiasts at RIT Demonstrating Success
  - Rescue Shelter



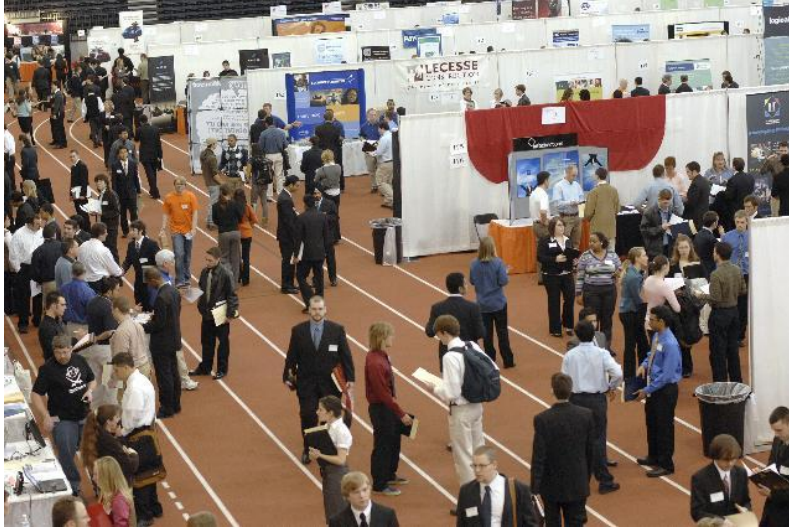
# PS Coop's and Graduates





## Career Fairs

- Fall - RIT
- Winter - Packaging
- Spring - RIT



# Packaging Science



- Small Department at a Big School
- Blends Creative, Scientific, Business and High Technology – Variety of Career Directions
- Outstanding Placement, Networking, Corporate and Alumni Support



# Packaging Science

- College of Engineering Technology Video
  - <https://youtu.be/Gw4hFTQrhBA>
- More RIT Questions
  - <https://www.rit.edu/admissions/freshman>
- Department Questions



Changfeng Ge,  
Graduate director  
[cfgmet@rit.edu](mailto:cfgmet@rit.edu)



Stefanie Soroka,  
Sr. Academic Advisor  
[swsmet@rit.edu](mailto:swsmet@rit.edu)