

Sustainability Graduate Programs

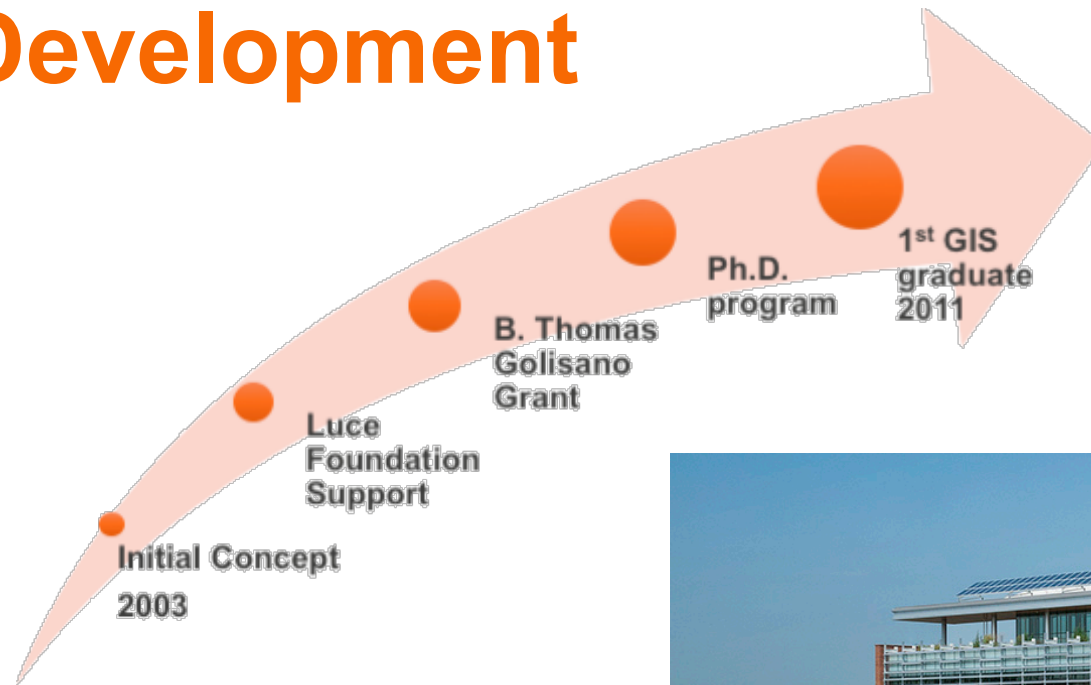
Golisano Institute for Sustainability



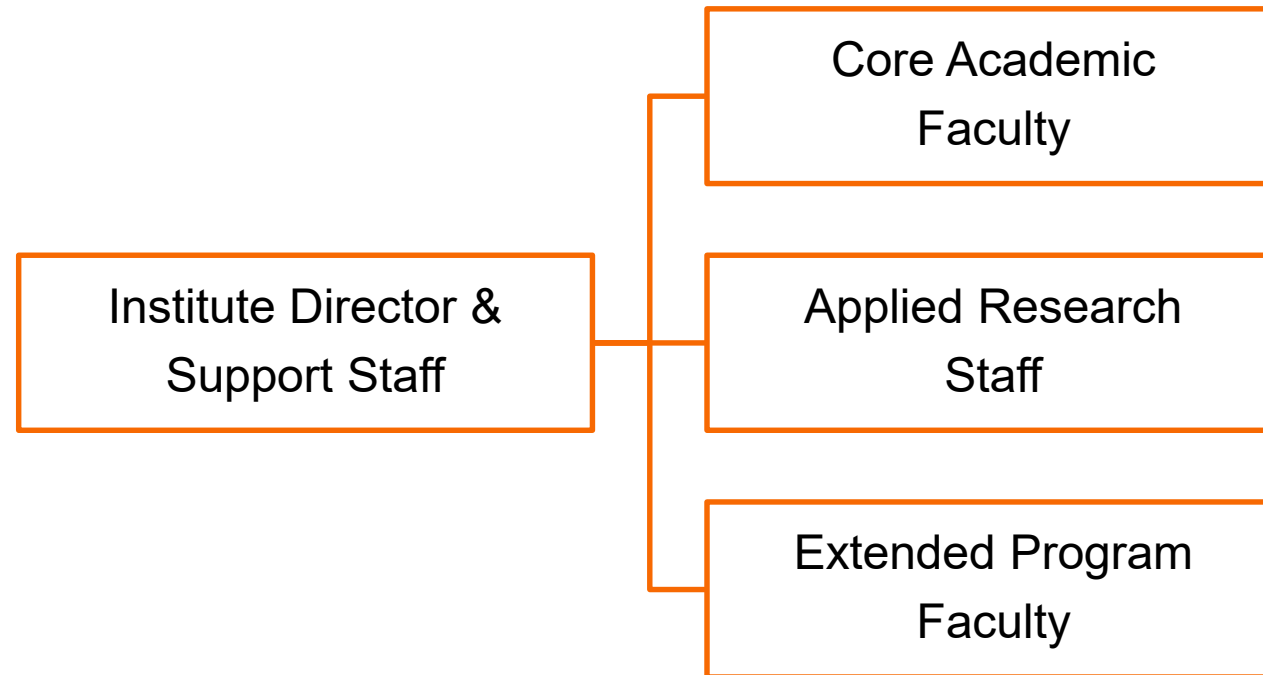
Research Areas

- Renewable Energy
- Built Environment
- Mobility & Transportation
- Sustainable Production Systems
- Waste-to-Energy
- Smart Grid
- Resilient and Connected Communities
- Food-Energy-Water Nexus

The Development



GIS Organization: Diverse & Dynamic





Dr. Nabil Nasr

Associate Provost and Director, GIS

Research

- Clean Production
- Remanufacturing
- Sustainable Manufacturing

Core Academic Faculty



Tom Trabold
Head,
Sustainability



Callie Babbitt



Eric
Williams



Nathan
Williams



Sustainable Systems MS

- Energy and recycling systems
- Environmental assessment
- Economics and policy

Potential Tracks

- Sustainable Energy
- Circular Economy
- Sustainable Urban Systems



Sustainable Systems MS

Core Curriculum

- Fundamentals of Sustainability Science
- Economics of Sustainable Systems
- Risk Analysis
- Multi-criteria Decision Analysis
- Industrial Ecology
- Policy Requirement | Electives



Sustainability Ph.D.

- Sustainable Energy Production
- Life Cycle Assessment
- Energy Systems Modeling

Participate in an Institute research project led by a faculty member. All tuition costs are covered, and a stipend is given to help pay for living expenses.



Sustainability Ph.D.

Core Curriculum

- Fundamentals of Sustainability Science
- Economics of Sustainable Systems
- Risk Analysis
- Multi-criteria Decision Analysis
- Industrial Ecology
- Policy Requirement | Electives

Extended Faculty (partial list)



Dr. Gregory Babbitt

Assistant Professor, College
of Science
gabsbi@rit.edu
585-475-6246



Dr. Amit Batabyal

Arthur J. Gosnell Professor of
Economics, College of Liberal
Arts
aabgsh@rit.edu



Dr. Eric Hittinger

Assistant Professor, College
of Liberal Arts
eshgpt@rit.edu
585-475-5312



**Dr. Clark G.
Hochgraf**

Associate Professor, College
of Applied Science and
Technology



**Dr. Clyde Eiríkur
Hull**

Associate Professor,
Saunders College of Business



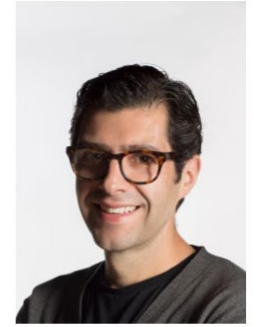
**Dr. Andres
Kwasinski**

Associate Professor, College
of Engineering



Dr. Brian Landi

Assistant Professor, College
of Engineering
brian.landi@rit.edu



Alex Lobos

Associate Professor and
Graduate Director, Industrial
Design, College of Imaging



Dr. Jeffrey Lodge

Associate Professor, College
of Science
jslsbi@rit.edu
585-475-2489
[View Bio »](#)



**Dr. Ryne P.
Raffaele**

VP Research & Associate
Provost and Professor, Kate
Gleason College of
Engineering



**Dr. Jennifer L.
Schneider**

Professor, College of Applied
Science & Technology
jlwcm@rit.edu
585-475-2092



**Dr. Thomas W.
Smith**

Professor, College of Science
twssch@rit.edu
585-475-7982
[View Bio »](#)



**Dr. Brian
Tomaszewski**

Assistant Professor, College
of Computing and Information
Sciences



Dr. Christy Tyler

Assistant Professor, College
of Science
actsbi@rit.edu
585-475-5042



Dr. Jeffrey Wagner

Professor of Economics,
College of Liberal Arts
Jeffrey.wagner@rit.edu
585-475-5289

Applied Research Faculty



Dr. Mike Thurston

Manufacturing Energy Systems
Smart Products and Systems
Sustainable Built Environment



Dr. Gene Park

Environmental Toxicity
Membrane Filtration



Nenad Nenadic

prognostics health monitoring (PHM)
Microgrids
Parametric design



Chuck Ruffing

Environmental Toxicity
Green Chemistry

A Living, Learning Laboratory



A Living, Learning Laboratory



MS - Careers

Title	Company	Title	Company
Pollution Prevention Engineer	NYSP2I, RIT	Quality Assurance Manager	LSI Solutions
Performance Manager	NYSERDA	Director of Sustainability	ARAMARK
Energy Engineer	Power Management	Pollution Prevention Engineer	NYSP2I, RIT
Start-Up CEO	Cubi Consultoria	Sustainability Consultant	Strategic Community Intervention
Energy Advisor	Franklin Energy Services	SolarCorps Tribal Program Fellow	GRID Alternatives
Lecturer	RIT	Associate Test Engineer	Dell EMC
Start-Up CEO	Cubi Consultoria	Sustainability Consultant	SGS Group
Recycling Coordinator	City of Rochester, NY	Development Lead (migrant health)	NWRPCA
BIM-Project Engineer	The Pike Company	Technical Writer, Center for Advan	RIT
Product Stewardship Specialist	Kodak	Assistant Vice President	First American Equipment Finance



Ph.D. - Careers

Title	Company
Assistant Professor	Michigan State University (MSU)
Post-doctoral Associate	Massachusetts Institute of Technology (MIT)
Sustainability Consultant	Economic Development Authority
Research Scientist	Battery Prototyping Lab
Post-doctoral Associate	Environmental Protection Agency (EPA)
Independent Consultant	Climate Consulting
Director	Center for Sustainable Manufacturing
Development Specialist	Praxair
Project Manager	NYSERDA
Post-doctoral Associate	National Renewable Energy Lab (NREL)
Visiting Professor, Public Policy	RIT
Research Scientist	Battery Prototyping Lab
Director of Sustainability	Rochester Regional Health
Project Coordinator	Underwriter's Laboratory (UL) Environment



**Massachusetts
Institute of
Technology**



NYSERDA





Student Involvement

- Networking and Team Building
- Community Outreach
- Sustainability Education
- ImagineRIT

A large, modern, multi-story building with a glass and brick facade, featuring a solar panel array on the roof. The building is surrounded by a landscaped courtyard with green lawns, trees, and winding paths. The sky is blue with a few clouds.

Sustainability Institute Hall



Building Overview

Research Areas

- Fuel cells
- Sustainable Materials
- Electric Vehicle Propulsion
- Eco-IT
- Food Waste

Living Laboratory

- Green Wall
- Elevator
- Floor
- Sensors

Building Design

- offices, classrooms, meeting rooms
- labs, testbeds, and workspaces
- LEED Platinum Certified

























Questions?

Prof. Thomas Trabold
Sustainability Dept. Head & PhD Program Director

585-475-4696

tatasp@rit.edu

<https://www.rit.edu/sustainabilityinstitute/>