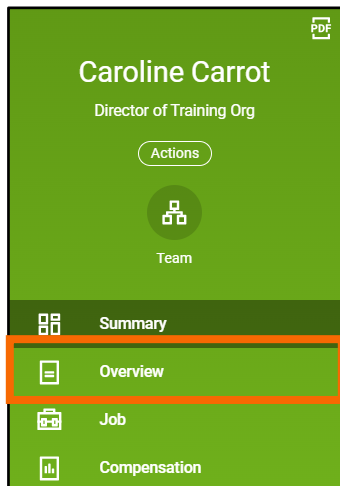


Workday provides your department's reporting structure, which can help you understand your place within your organization.

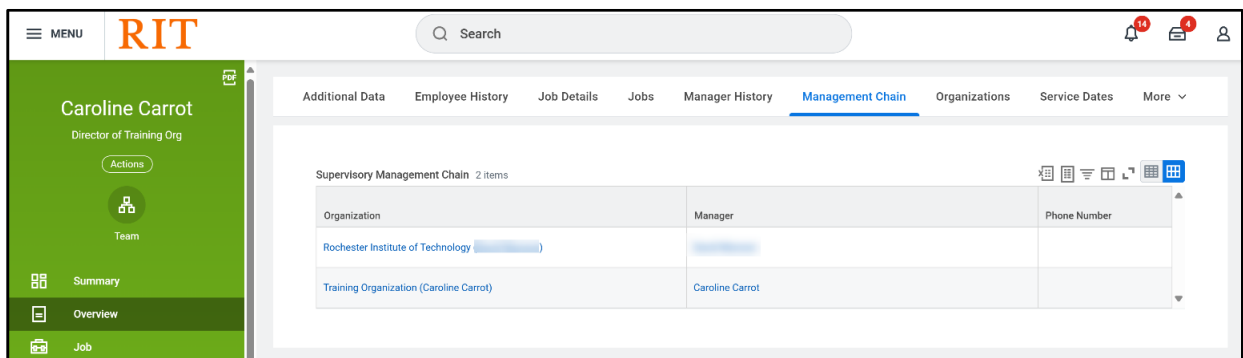
## Locate Your Place in the Organization

From the homepage:

1. Select your employee **Profile** icon in the upper right corner and select **View Profile**.
2. Select the **Overview** tab.



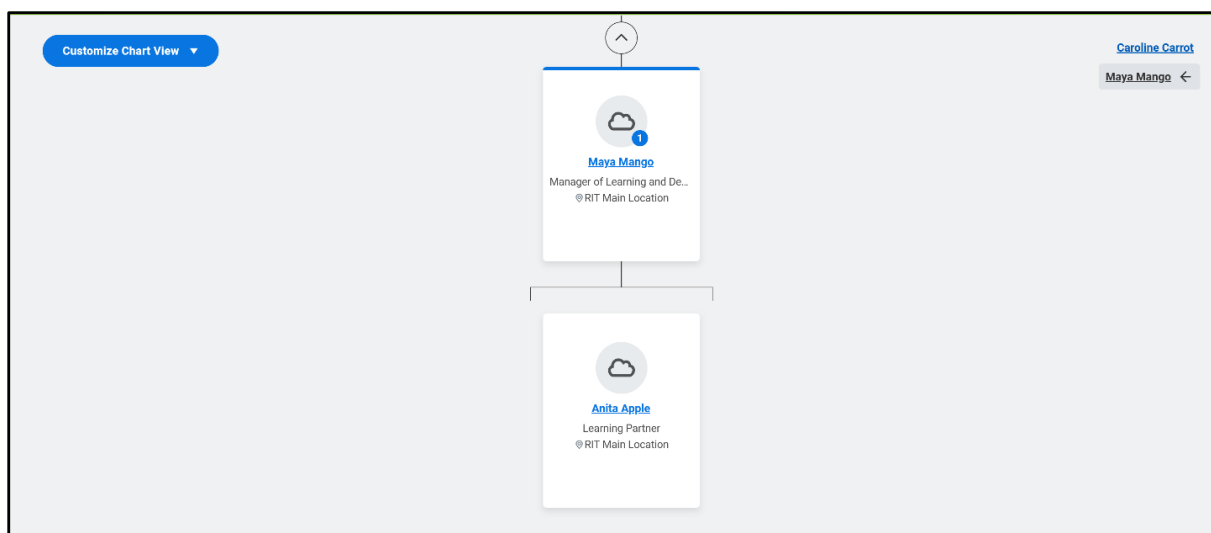
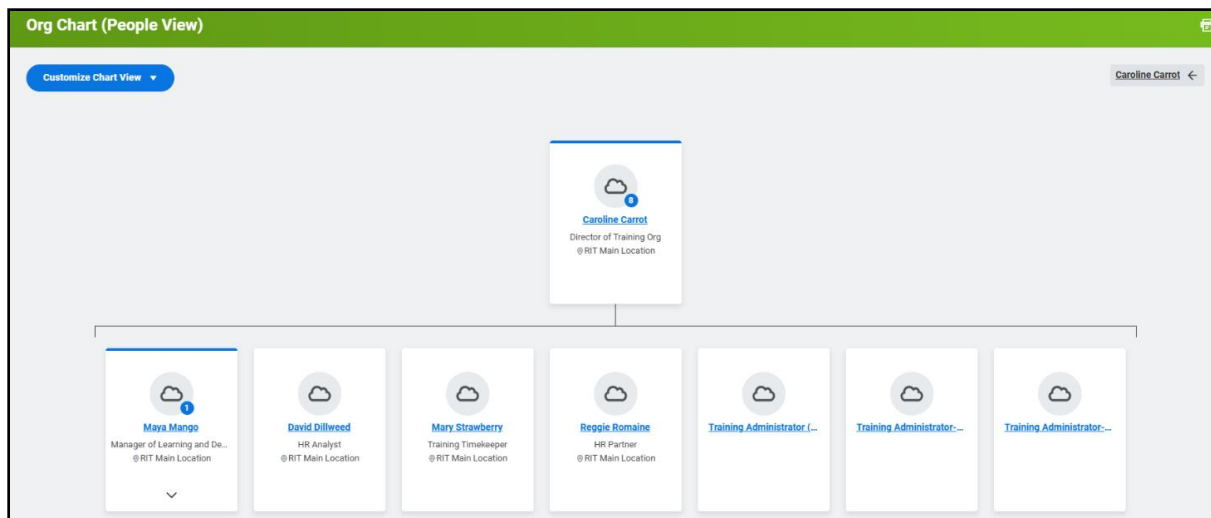
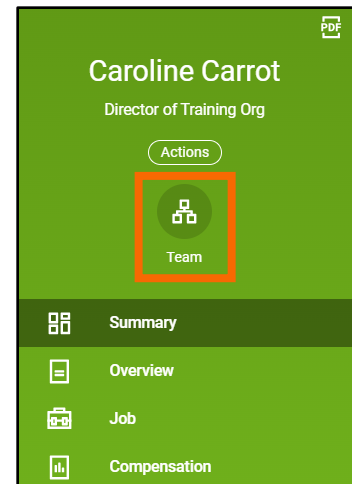
3. Select the **Management Chain** subtab. Information about your management chain displays.



4. From **Overview**, you will find helpful tabs like **Manager History**, **Management Chain**, and **Organizations**.

## Locate Your Organizational Chart

1. Select your employee **Profile** icon in the upper right corner and select **View Profile**.
2. Select the **Team** icon.
3. Your organizational chart includes information about your team, HR support, and your manager's manager, as shown in the image below.
4. In the upper right corner of the page, hover over your name to reveal your management chain. Select the names in the chain to navigate your hierarchy or use the arrows at the top of the organizational chart. You can also use the Customize Chart View pull-down in the top left corner to view your organizational chart with or without contingent workers, matrix report, or open positions.



# Mobile

## Locate Your Place in Organization – iPhone and iPad

The org chart helps you identify where you and others fit into the overall structure of your organization. Your position within the department displays, as well as the positions of your teammates. Within the org chart, you can navigate the structure of your department and company by selecting individuals or groups.

From the homepage:

1. Select employee **Profile** icon in the upper right corner and select **View Profile**.
2. Select the **Team** icon to open the Organization Chart.
3. Swipe up or down to navigate through the company hierarchy.
4. Select an individual's **Profile** photo to view the Profile Page.
5. Select **Back** arrow to return to the chart.

