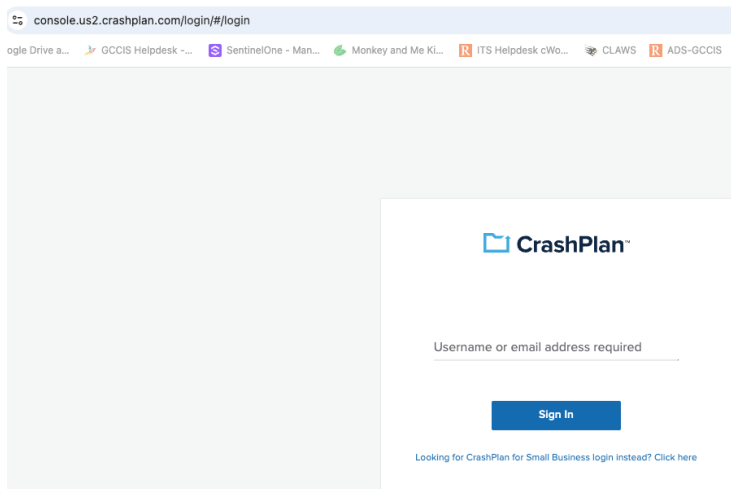
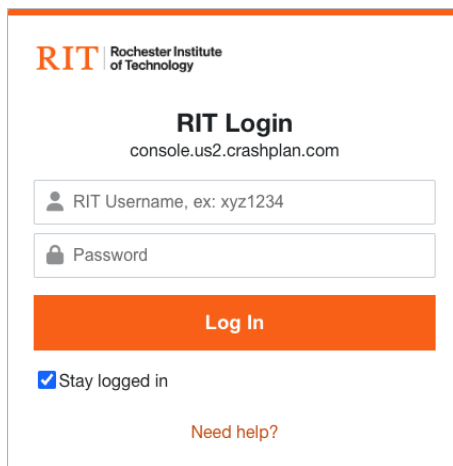


## Windows Install Instructions:

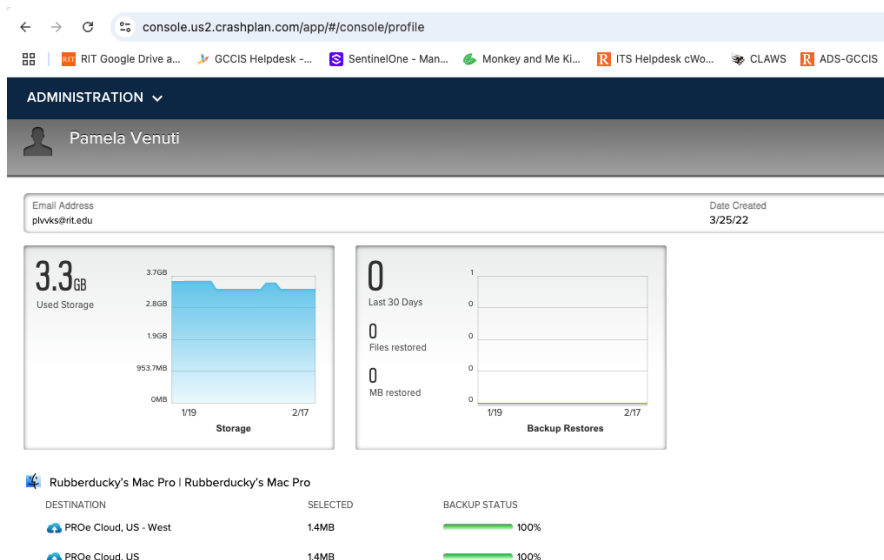
1. Visit <https://console.us2.crashplan.com/login/#/login>
2. Login with your username@rit.edu account



3. Login with your full RIT login and select Single Sign On login



4. From the Crashplan control panel, select Administration



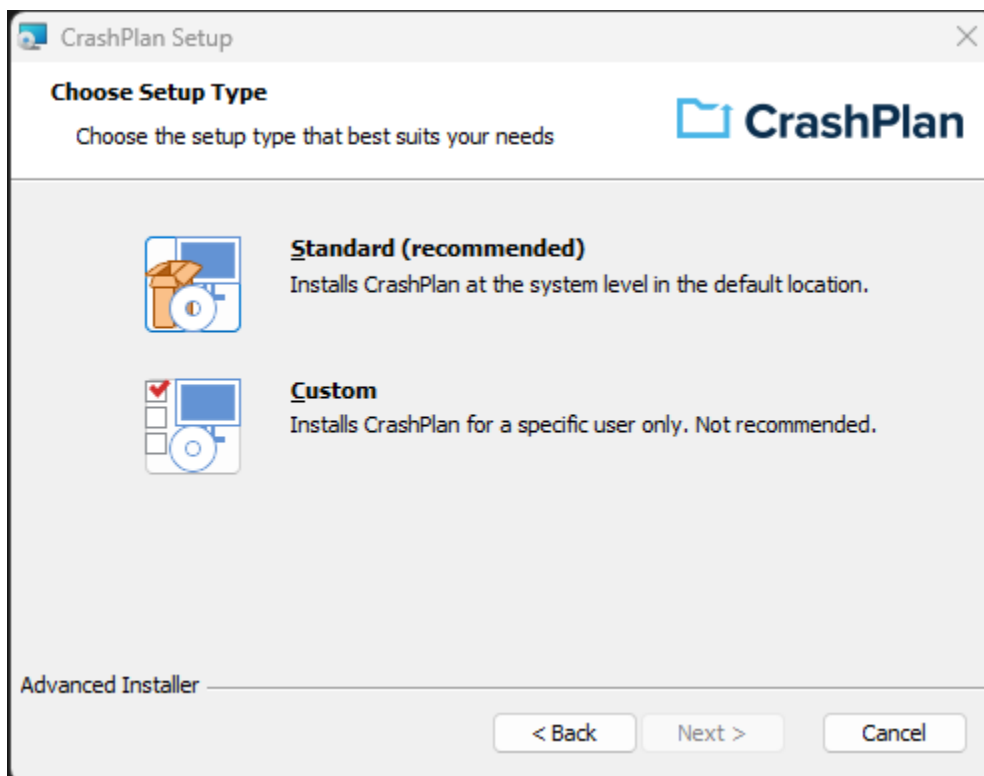
- From the Administration drop down menu, click on Downloads for a complete list of Crashplan clients



- Download the Windows Client. The portal will always be up to date with the most recent version.

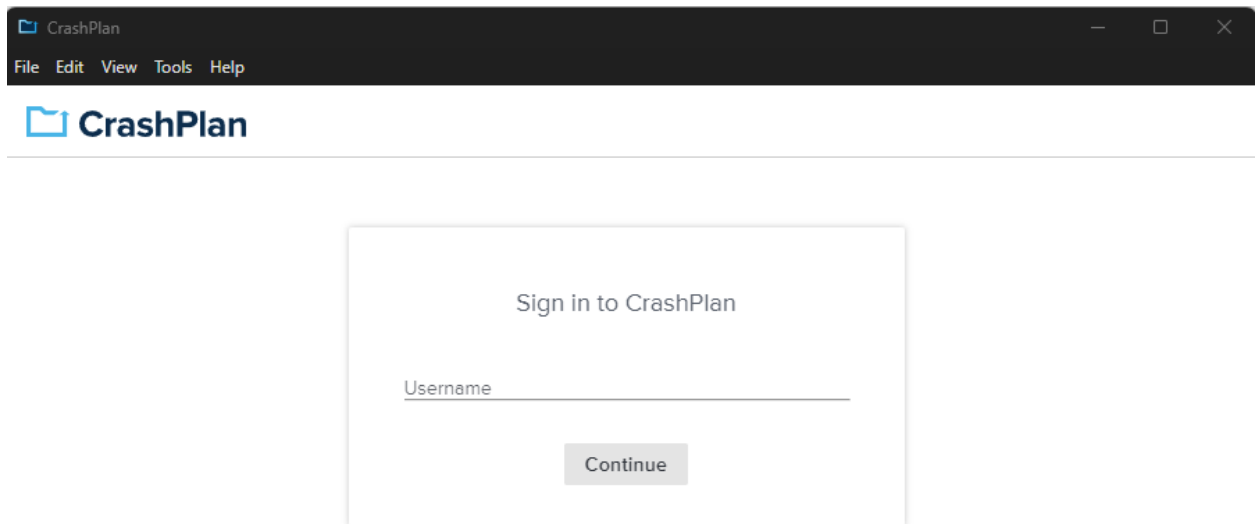
App Downloads					
Available on your CrashPlan server					
Download and install CrashPlan for your operating system. After installation, sign in to the app to start backing up.					
Operating System ↕	Version ↕	Build Number	App	Hash (SHA-1)	Download Apps
Windows - 64-bit processor	11.5.3	13	CrashPlan	b7b16633cc87c6d4069e3c79ba108986d3422a89	<a href="#">↓</a>
Mac	11.5.0	445	CrashPlan	940cda1806daa49f8ce9ada83defa4223ce984f8	<a href="#">↓</a>
Linux	11.5.0	445	CrashPlan	8d9d38bce262c1ea3b9c16a8a104aa20c1386bef	<a href="#">↓</a>
Windows - 64-bit processor	11.4.1	21	CrashPlan	90f0c3ff3963bcd0f3c37f435c71495a2e01d4b6	<a href="#">↓</a>
Mac	11.4.1	11	CrashPlan	af2a60e09a70eeaaff0909f0546eb339ac76b730	<a href="#">↓</a>
Linux	11.4.1	11	CrashPlan	6e8e6e32702bebf3efb2977392f09324ba4c8834	<a href="#">↓</a>

- Once downloaded, run the installer. Choose Standard installation

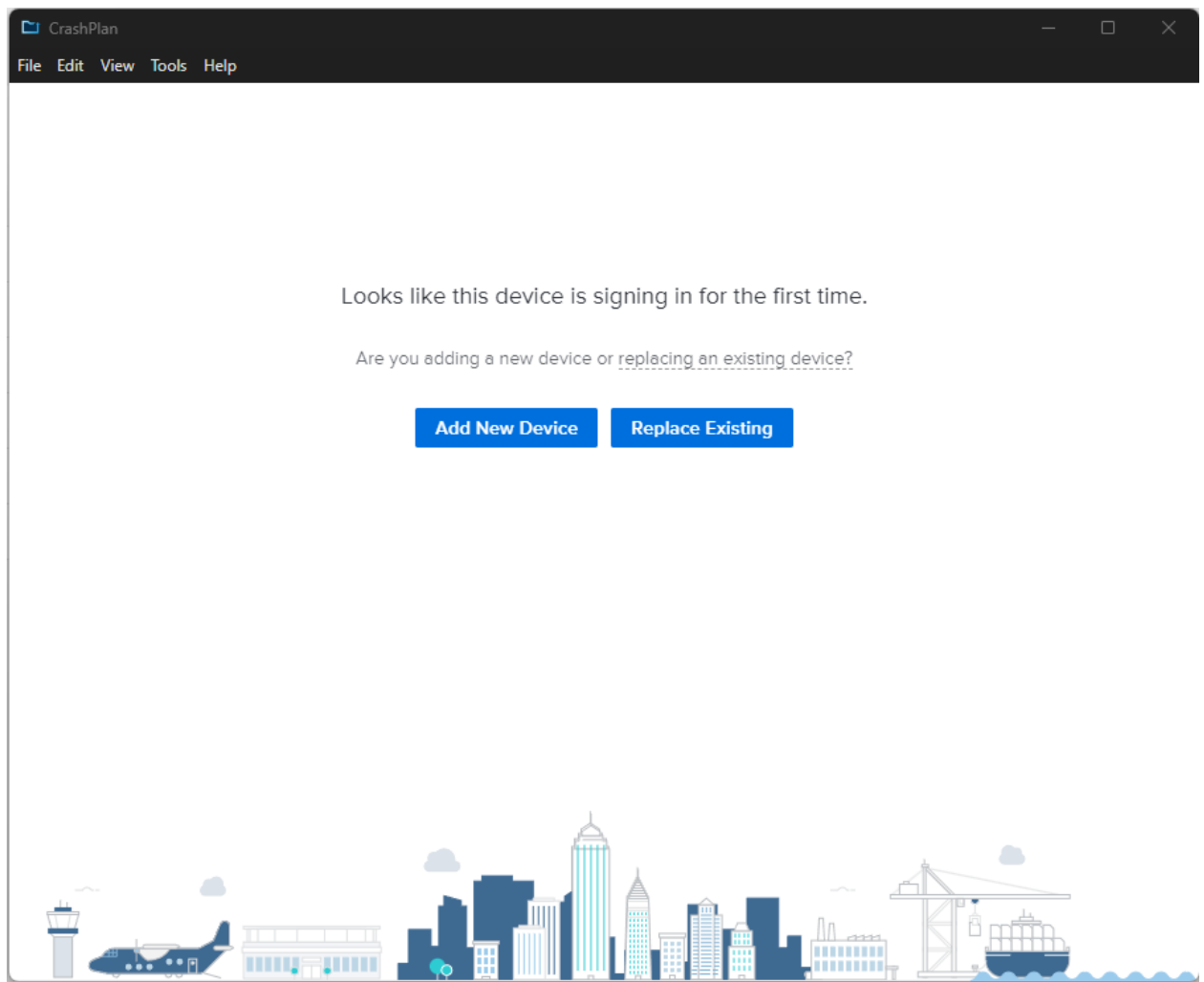


- Open the CrashPlan app. You can find it in the Start menu or system tray.

9. Sign in with your RIT credentials ([user@rit.edu](mailto:user@rit.edu)). This will redirect you to the RIT login. Once logged in the webpage will close and the app will log in.



10. You'll be presented with the option to add a new device or replace an existing one. If using CrashPlan for the first time or adding an additional device, choose Add a New Device. If replacing an old device, choose Replace Existing.



11. If you are replacing a device, the app will guide you through a three step process.  
You'll choose a device to replace, your settings and files stored in CrashPlan will transfer to the new device, and then a backup will be created of that device. Simply follow these steps to complete the process.
12. If you're adding a new device, an initial backup will be taken with default settings.  
You can change these settings at any time.
13. Click the Manage Files option to select what content is backed up.