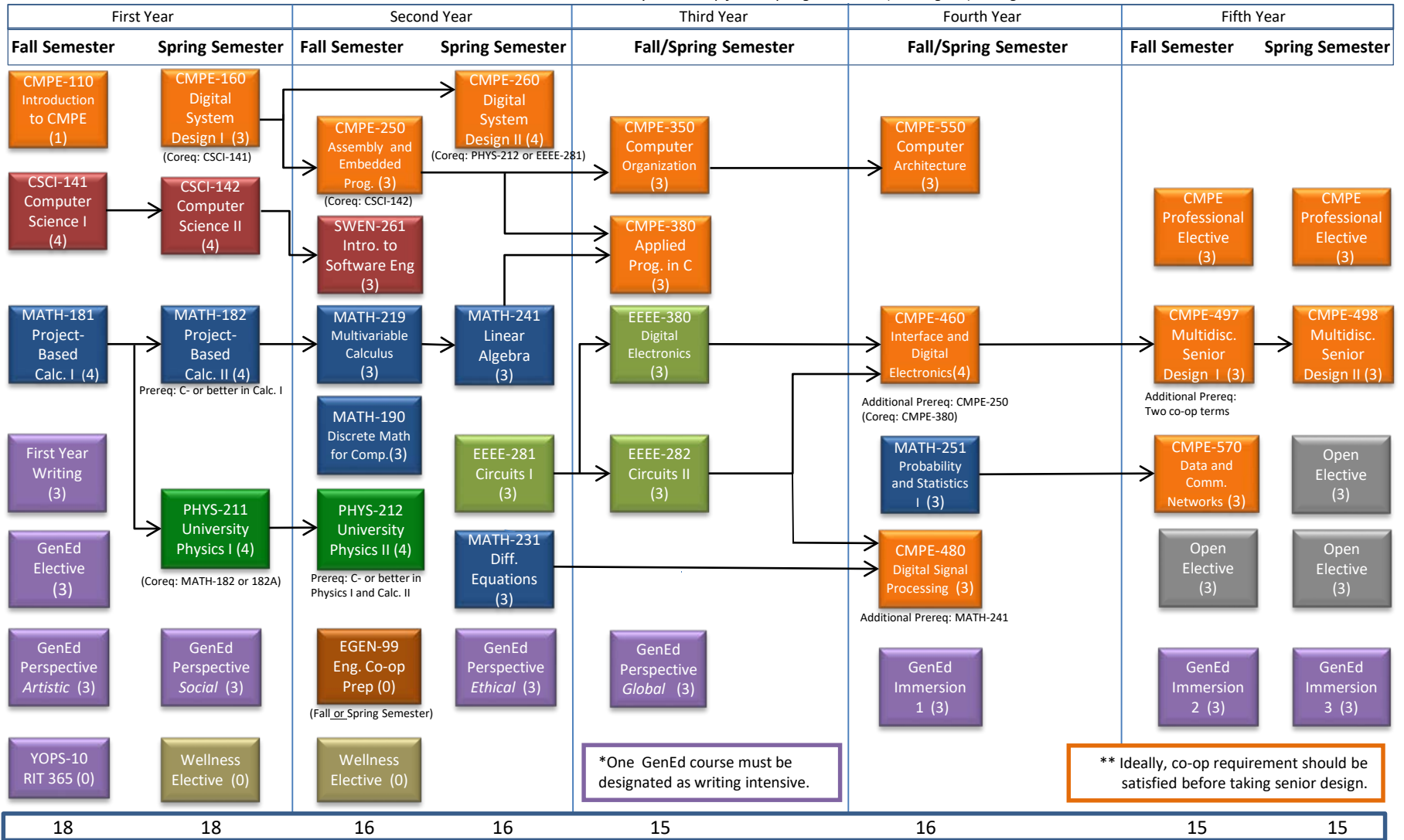


# Computer Engineering BS Program Schedule

3<sup>rd</sup> and 4<sup>th</sup> years: co-op fall or spring semesters (as assigned), along with summers



A grade of C- or better must be earned to complete MATH-181 (181A), MATH-182 (182A), PHYS-211, and CSCI-141

During the third and fourth years of the CmpE BS Degree Program, two summers and two semesters are spent on co op, alternating with coursework.

\*One writing intensive course must be chosen from the class search using the "WRTG" attribute and "WI-GE" attribute value. This course can be a perspective, immersion, or free elective

\*\*CMPE-460 IDE and a minimum of two co-op terms must be completed before taking CMPE-497 Multidisciplinary Senior Design I.

Effective starting 2020–2021 academic year

This flowchart is intended as a general resource in addition to more individual guidance from advisors. Specific course information and prerequisites can be found on SIS using class search.