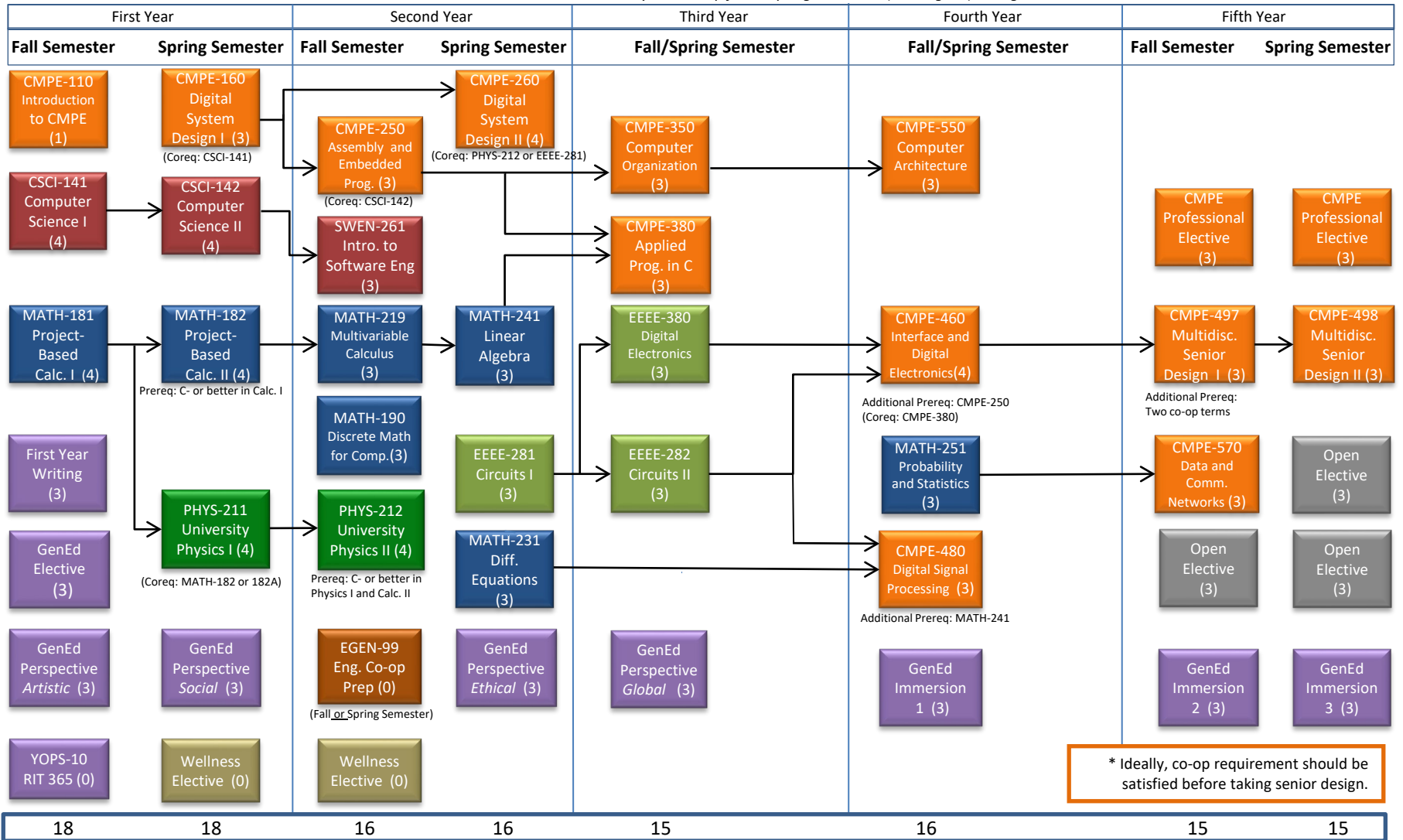


Computer Engineering BS Program Schedule

3rd and 4th years: co-op fall or spring semesters (as assigned), along with summers



* Ideally, co-op requirement should be satisfied before taking senior design.

A grade of C- or better must be earned to complete MATH-181 (181A), MATH-182 (182A), PHYS-211, and CSCI-141

During the third and fourth years of the CmpE BS Degree Program, two summers and two semesters are spent on co op, alternating with coursework.

*CMPE-460 IDE and a minimum of two co-op terms must be completed before taking CMPE-497 Multidisciplinary Senior Design I.

Effective starting 2020–2021 academic year

This flowchart is intended as a general resource in addition to more individual guidance from advisors. Specific course information and prerequisites can be found on SIS using class search.