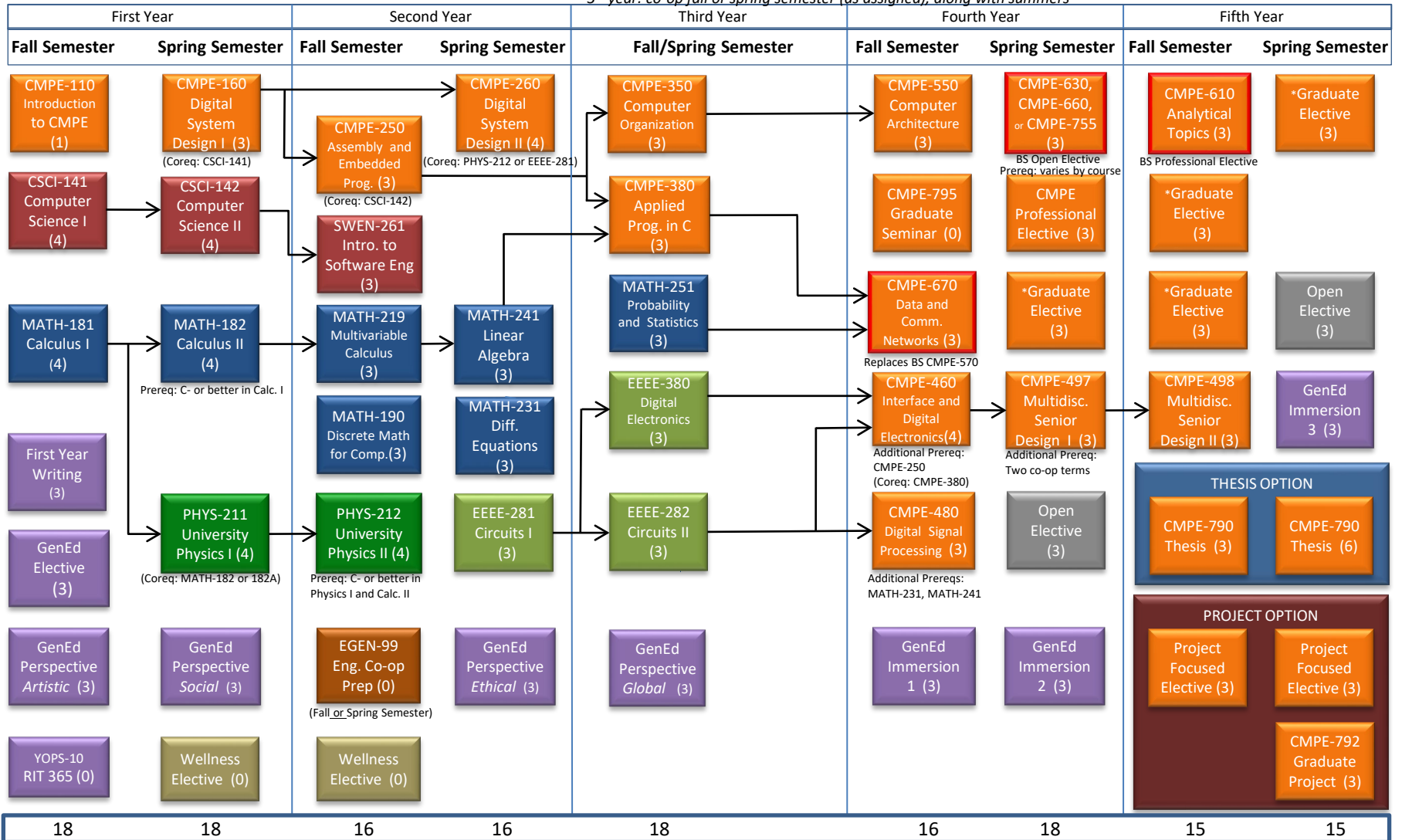


Computer Engineering BS/MS Program Schedule for Thesis or Project Options

3rd year: co-op fall or spring semester (as assigned), along with summers



A grade of C- or better must be earned to complete MATH-181 (181A), MATH-182 (182A), PHYS-211, and CSCI-141.

A grade of C or better must be earned to complete all graduate level courses.

During the third and fourth years of the CmpE BS/MS Degree Program, summers are spent on co-op, as well as one assigned semester in the third year, alternating with coursework.

*At least two graduate electives must be CMPE courses.

■ Course is counted toward both BS and MS degrees.

This flowchart is intended as a general resource in addition to more individual guidance from advisors. Specific course information and prerequisites can be found on SIS using class search.