

Mapping Model Flow Activity Directions

Name: _____

Grades: 9-12

Directions: Print and use this worksheet or follow the pictures in the slideshow!

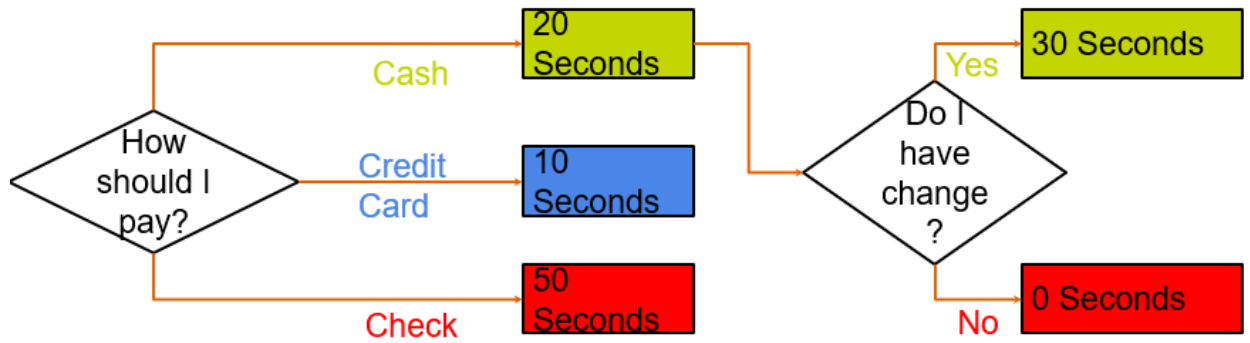
Materials Required:

1 piece of paper to keep track of the different decisions made, and a pencil/pen.

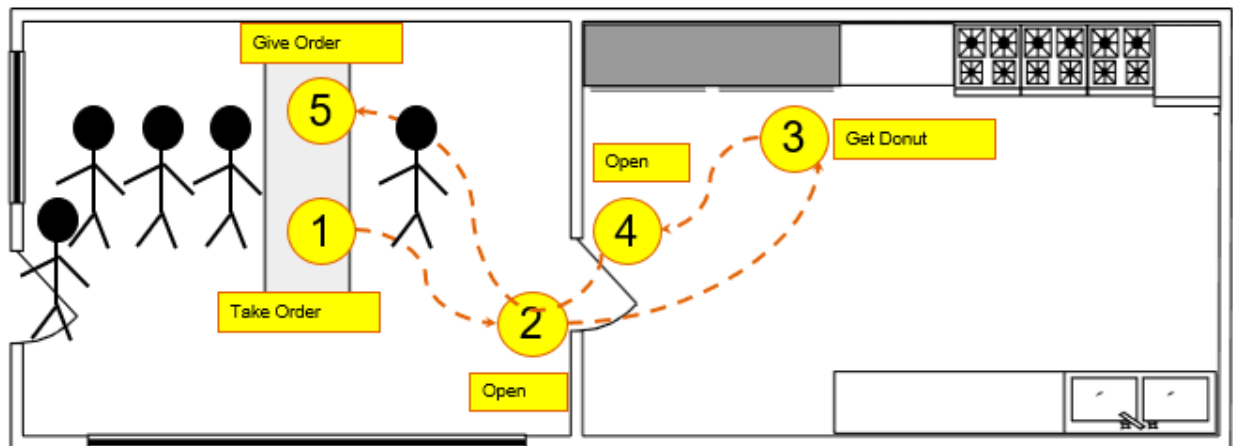
Directions:

1. Think about getting ready for school and the steps associated with that and where in the house each step takes place.
2. For example, getting changed may involve a closet, brushing your teeth in the bathroom, and getting food from the kitchen.
3. When you are including the steps that you do each morning, think about the decisions you make and how that affects the process.
4. For example, if it's snowing you will probably have to put on boots which will take longer than putting on sandals or sneakers. Another decision is whether to skip a step, especially if you are running late!
5. The first step is to draw the layout of your house, either with on paper or by using <https://www.lucidchart.com/> if you have access.
6. The layout does not have to be 100% accurate, if your room is 10 feet and 2 inches long, you can shorten that to 10 feet. If your house is very complex, try making simple rectangles/squares for each room and hallway.
 - a. Make sure to include relevant items in your house. If you have to go downstairs, include them. If getting ready for school involves getting clothes from a cabinet that should be included as well.
 - b. Generally, don't try to draw everything and focus on larger pieces of furniture and appliances (beds, desks, fridges, etc....)
7. Try to time how long each step takes by timing yourself on your phone or by counting.

8. Remember the importance of travel time in the donut shop. If one step involves going to the bathroom to brush your teeth, time how long it takes for you to go from your bedroom to the bathroom. Feel free to use estimations!
9. Map out the times for each path for decisions like seen below.



10. With all your steps known, map them out in your house like the steps are mapped out below! Remember that decisions can lead to different rooms.



11. Once everything is mapped out in your layout, imagine actually starting the process you just modeled and go down different pathways. See how long each route takes.
 - a. Is there a certain decision that takes a lot of time?
 - b. What is the shortest time to get ready for school?
 - c. What is the longest time?
 - d. How can you change the process to go faster? (Try moving items if you can)