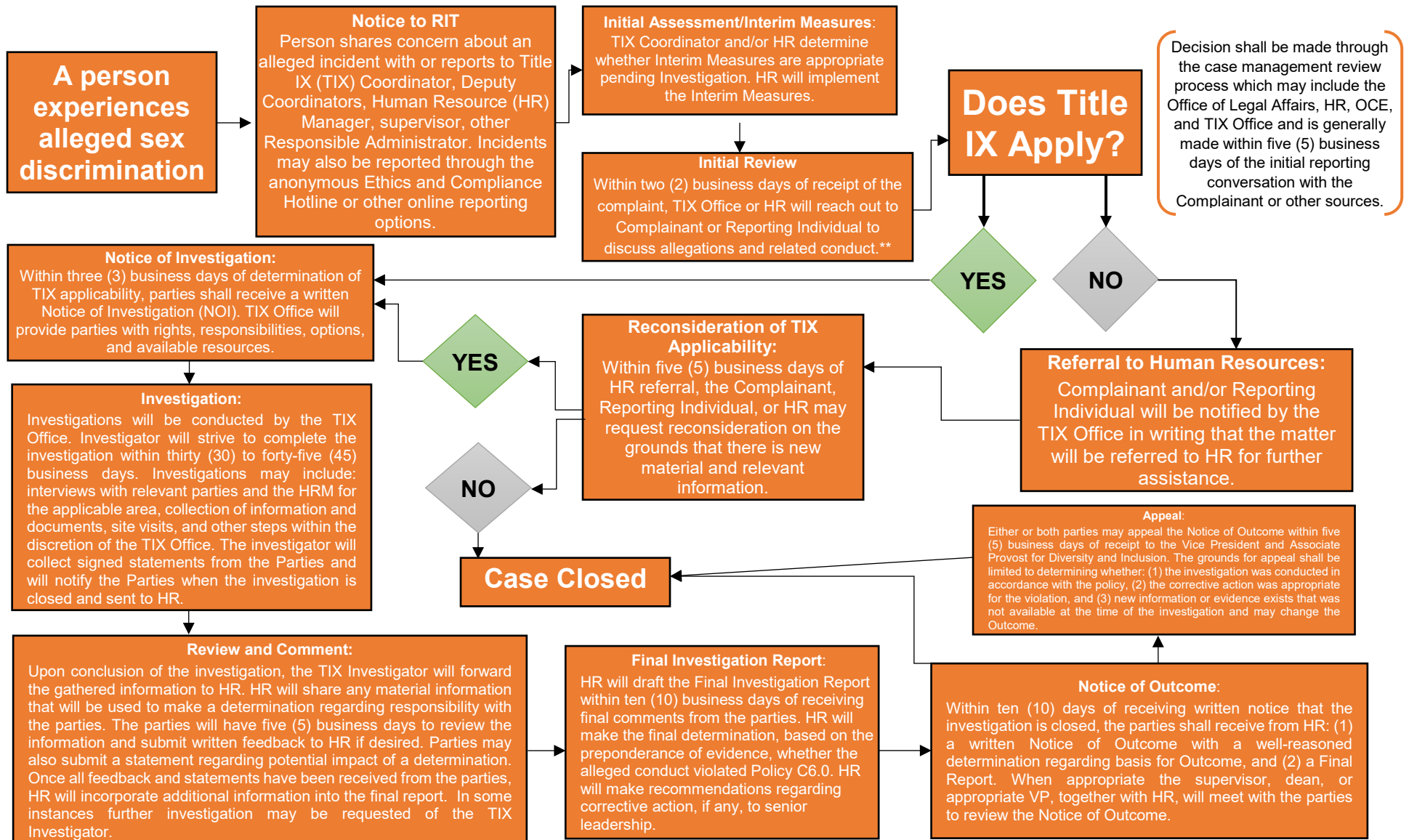


RIT Title IX Investigation Process for Employees*



*This flow chart is intended as guidance to the steps in the process for handling concerns about sex discrimination under RIT's Policy Prohibiting Discrimination and Harassment (Policy C06.0). For a complete description of the process and definitions of the terms used herein please refer to Policy C06.0, and related [Procedures](#).

** Timeframes indicated may vary based on the circumstances of each case. Parties will be notified in writing if timeframe needs to be extended for any reason and the basis for any extension. In addition parties shall be permitted to bring an Advisor of Choice to any meetings related to cases under Policy C06.0.