

RIT



Member Benefits Guide

Welcome to the Osher Lifelong Learning Institute at RIT, a learning community for adults age 50+. This guide is intended to help you get the maximum benefits from your Osher membership. If you have any questions, please ask one of our helpful staff members.

Our members say Osher is the best deal in town!

Osher Lifelong Learning Institute at RIT

50 Fairwood Drive, Suite 100

Rochester NY 14623

Email: osher.info@rit.edu

Phone: 585-292-8989

Website: osher.rit.edu

Facebook: facebook.com/osheratrit

Table of Contents

Osher Institute Benefits	1
Unlimited Courses	1
Course Leadership	1
Pfaudler Lecture Series	1
Arts & Lectures Series	2
Summer Seminar Trips	2
Social Events	2
Intersession Events	3
Special Interest Groups	3
Member Art Gallery	3
Lending Library	3
Online Video Library	4
Assistive Listening Devices	4
Volunteerism	4
Council Org Chart	5
RIT University Benefits	6
Student Identification Card	6
BJ's Wholesale Club Membership	7
Computer Account / Network Access	8
Computer Account Form	11
Liberal Arts Course Auditing	13
Course Auditing Form	15
Audiology Services	17
Wallace Library	17
Travel Programs	18
Parking Privileges	18
Events on Campus	18
Campus News Emails	18
Recreation, Shopping, & Food	18
Gordon Field House and Activities Center	18
<i>Better Me</i> Wellness Classes	20
Student Alumni Union	20
Global Village	20
Park Point	20

Osher Institute Benefits

Unlimited Courses

Your membership fee allows you to take as many courses per term as you would like, at no additional charge. With three class periods per day, you could take as many as 14 classes per week if you were so inclined!

Course Leadership

Some people say teaching is the best way to learn. At Osher, **courses are developed and led by member volunteers** as it fosters a sense of community in, and ownership of, the program. No previous teaching experience is required, just a desire to share with others your knowledge or passion for a topic. Class members are energetic, curious, and have a lot of life experience to bring to the discussion. In keeping with our mission, course topics are primarily academically oriented. Prior to each term, course proposals are submitted to and reviewed by the Course Offerings Committee. Course proposals include the course title and description, the text or materials that will be used, the type of instruction planned (i.e. lecture, discussion, seminar) the length of the course, and other pertinent information. Leading a short, one-session class gives you the opportunity to "try out" course leadership to see if it is for you! Mentoring for new course leaders is available.

Go to the Resources page of our website (rit.edu/gcr/osher/resources) to fill out the **Course Proposal Form**.

Pfautler Lecture Series

Marge Pfautler, one of the founding members of our original lifelong learning group, then called The Athenaeum, had a vision: she wanted to establish a relationship with the Rochester community beyond RIT. Toward that end, she sought to bring in people like the city mayor, state representatives, and religious leaders to provide **information about the local political, social, religious, and cultural environment**. Many years later, the Pfautler Lecture Series continues weekly on **Thursdays at 12:15**. Check the course catalog or online calendar (rit.edu/gcr/osher/event-calendar) for topics and speakers.

Arts & Lectures Series

This enrichment series, made possible by our endowment from The Bernard Osher Foundation, brings us **entertaining performers, musicians, and others artists and expert speakers**. Following each of these events is a catered reception with food and drink. **And the best part is...it's free!** Recent performances include: *The Accidental Hero*, Push Physical Theater, Ying Quartet, pianist Nathan Carterette, and "Eastman To Go" student music groups. Recent guest lecturers include: Dr. James Wood, Albert Paley, Anne Serling, and Evan Dawson. These events are publicized via emails, class announcements, and posters in the building. Stay tuned for our next Arts & Lectures event!

Summer Seminar Trips

In addition to the academic courses offered in the summer, the Summer Seminar Series provides opportunities for members and their guests to **explore and enjoy the many cultural, historic, artistic, and scientific treasures within a day's ride from Osher**. Our volunteer Summer Seminar Committee plans each of the four trips (by comfortable coach bus) is preceded by a corresponding lecture here at Osher. There are additional fees for the trips; the lectures are free. Program information and registration details are mailed to members' homes in April and follow up emails are sent. See additional program information: rit.edu/gcr/osher/programs/trips-and-tours

Social Events

Enjoy the company of fellow members in a relaxed atmosphere at several social events, planned by our volunteer Social Committee, throughout the year. A minimal fee is usually required; some events allow members to pay for and bring a guest. Recent events include: Harbor Town Belle river cruise, annual summer picnic, ArtisanWorks tour, Radio Social happy hour, and Chinese New Year dinner at Red Sun. Events are publicized via emails, class announcements, and posters in the building. Stay tuned for our next fun social event!

Intersession Events

Intersessions are **visits to sites of local interest** or on the RIT campus during our breaks between terms and are planned by the volunteer Intersession Committee. Members provide their own transportation and most events are free or involve a minimal fee; some events allow members to pay for and bring a guest. Recent events include: Genesee Country Village & Museum holiday tour and luncheon, Eastman Museum gingerbread house display, and tours of RIT's MAGIC Center and the 3-D printed prosthetics lab. Intersessions are publicized via emails, class announcements, and posters in the building. Stay tuned for our next Intersession event.

Special Interest Groups

A Special Interest Group (SIG) is an informal community of Osher members who gather in order to **pursue and enjoy a shared interest**. All members are encouraged to join an existing SIG, or to initiate the formation of a new SIG. See a list of current SIGs here: rit.edu/gcr/osher/programs/special-interest-groups

Member Art Gallery

The Osher Gallery space is **open to Osher members to display their art**. All media are welcome. Recent shows have included but were not limited to:

- Acrylic
- Clay Sculpture
- Crafts
- Drawing
- Needlework
- Oil
- Pastel Collage
- Photography
- Watercolor
- Wood Carvings

If a member is interested in showing his/her work in the Osher Gallery, contact the Gallery Coordinator or the Vice-Chair of Participation. The member's name will then be added to the Osher Artist List. Individuals on the Artist List are contacted and asked to commit to a specific time block on the schedule. Each show will be on display for approximately 60 days.

Lending Library

The Osher Library is an **in-house collection of books and other media**

which have been donated by members and are maintained by member volunteer librarians. Materials are available to borrow on a no-time-limit basis and, of course, there are no late fees! Members sign out each item in the logbook and cross out their names when each item is returned.

Online Video Library

We have a **video collection** of past Pfaudler Series and other lectures at sites.google.com/site/oshervideolisting/.

Assistive Listening Devices

Do you find conversation, lectures, or videos in class hard to follow? Give our assistive listening system a try. We have both headphones and around-the-neck loops (for those who have hearing aids equipped with T-switches). Stop by the front desk and ask how **we can help you hear better**.

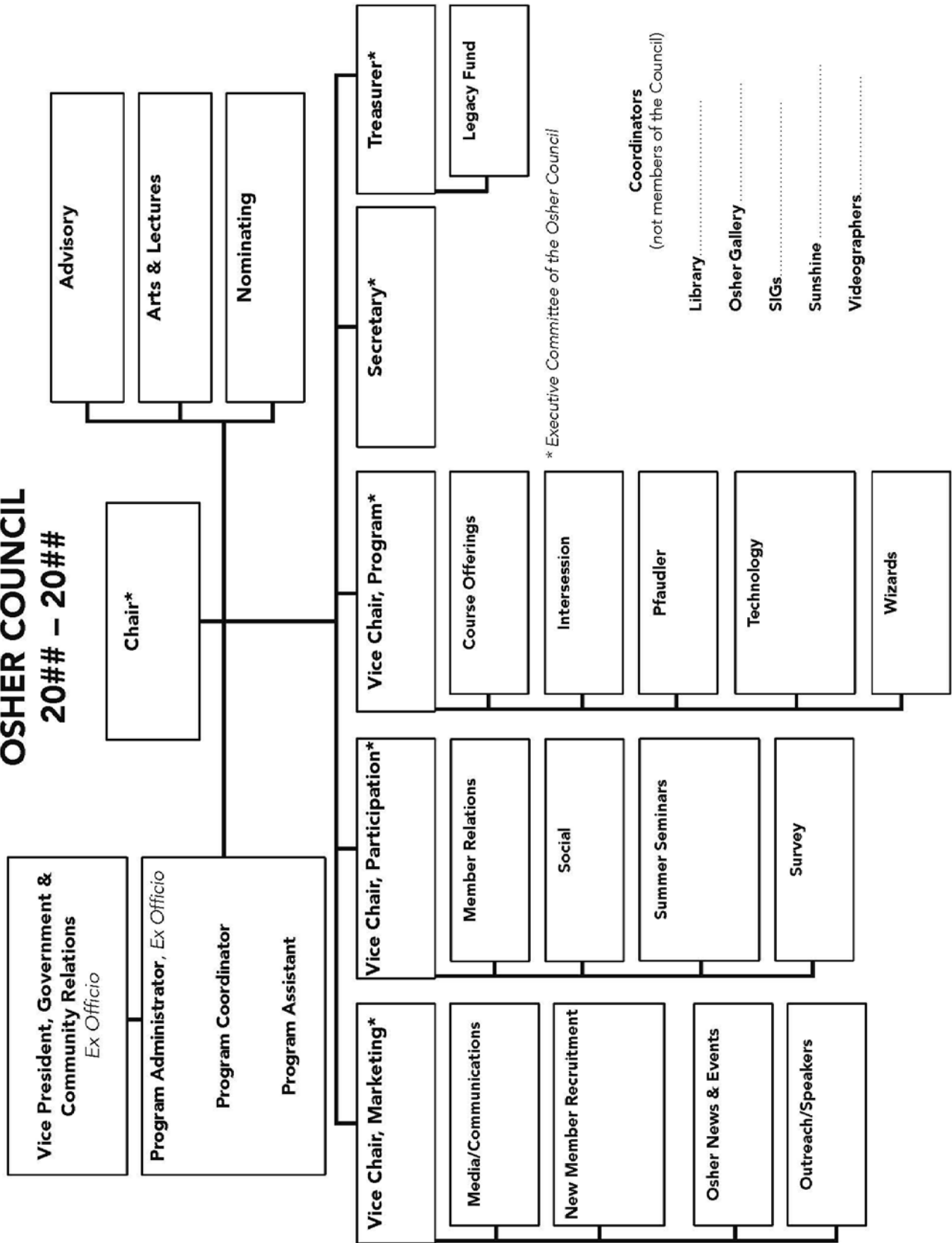
Volunteerism

By the members, for the members...Osher depends on member volunteerism. **Volunteering is a free way to give to an organization you care about, and it makes you feel good!** Osher is led by six officers elected every two years: the chairperson, three vice- chairs (Program, Marketing, and Participation), a secretary, and a treasurer. They form the Executive Committee. These officers appoint sub-committee chairs under their respective domains. (See the organizational chart on the following page.) These chairs, along with the officers, form the Osher Council and make decisions on issues affecting the organization. (See the big bulletin board in the lobby for the names, photos, and contact info of current Council members.)

Each sub-committee chair appoints his/her subcommittee members from Osher members who volunteer to undertake the various tasks of the organization. The chairperson also appoints ad-hoc subcommittees for specific tasks as the need arises with the approval of the Osher Council.

The day-to-day functioning of the Osher Institute is managed by the Program Administrator and staff who are employees of RIT, reporting to the Vice President of Government and Community Relations.

OSHER COUNCIL 20## – 20##



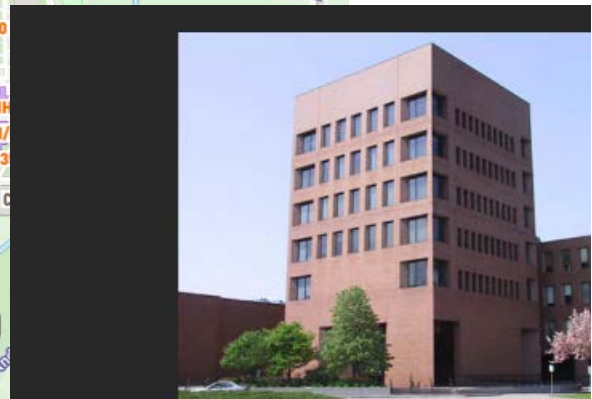
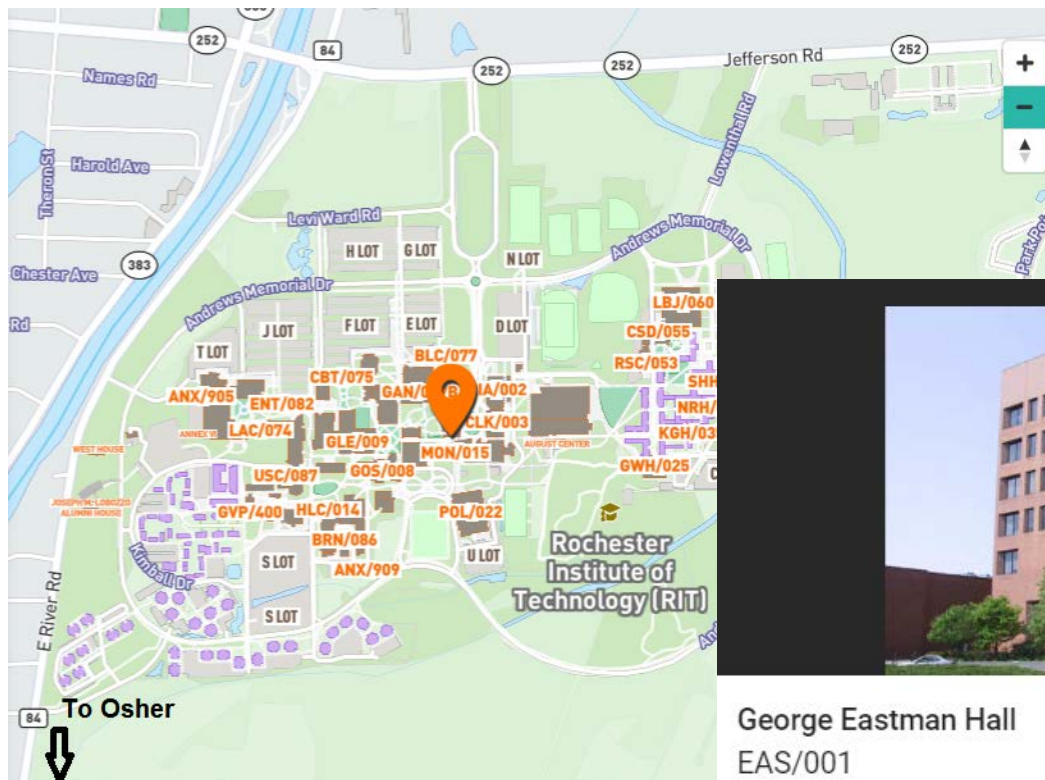
RIT University Benefits

Student Identification Card

*You must have a **Full Osher membership** to receive an **RIT Student ID card** and to participate in the on-campus courses and other activities described in this section of the guide.*



After joining, you will receive a “welcome letter” from Osher confirming your Full member status and instructions on how to get your ID card.



George Eastman Hall
EAS/001

To get your ID card, take the letter to the Registrar’s Office in George Eastman Hall:

1. Enter the RIT main campus on Lomb Drive from Jefferson Road (see the RIT campus map at maps.rit.edu)
2. At the roundabout, continue to drive straight to the Welcome Center/Information Booth and ask the attendant for directions to the

Eastman building (#1 on the campus map). You will be given a parking pass and directed where to park (do not park in any area with “Reserved” signs).

3. Walk to the main entrance of the Eastman building, walk straight ahead and turn right at the end of the hallway. About halfway down the next hall is the Registrar’s Office (Room 1202).
4. Approach one of the windows, indicate that you are an Osher member seeking to obtain an RIT Student ID card, and hand the person the membership letter and a photo ID. The registrar will arrange for you to have a picture taken immediately, and a card will be processed within minutes.
5. Keep the card and the nine-digit university ID (UID) number (it will not be printed on your ID card) in a safe place.

The **UID number** is necessary in case you wish to **access your RIT online library account, obtain an RIT computer account, or make an appointment at Audiology Services** (ntid.rit.edu/css/audiology).

The **Student ID card** is good for certain **discounts at Barnes & Noble @ RIT, campus event tickets, and at various places around Rochester** where student discounts are offered. Members have reported that discounts have been obtained in other US cities and countries where student discounts are offered such as museums and theaters.

Pro Tip: Do not attempt to obtain an ID card during the first week of a new RIT semester! Check the academic calendar at rit.edu/calendar .



BJ's Wholesale Club Membership

BJ's (Henrietta club only) offers Osher members the benefits of BJ's membership. Just **show your RIT ID card at the checkout.**

When getting gas, show your RIT ID to the attendant who then assists with starting the transaction.

Computer Account / Network Access

Once a Full Osher member has an RIT Student ID card, the member is entitled to secure an RIT computer account. The Osher Program Administrator must sponsor you for this account which allows you to:

- Register your own personal computer to **access the RIT Network** from the campus or from your home.
- Access some online RIT library resources, such as the **LinkedIn Learning (formerly Lynda.com) database**.
- Access **MyCourses**, a tool that allows RIT instructors and students to interact and access course materials online (for those auditing classes on campus).

Please note: Osher members are NOT entitled to receive rit.edu email addresses.

To obtain an RIT computer account:

1. You need to have an RIT Student ID card and 9-digit UID number from the Registrar's Office (see page 6).
2. Fill out the top section of the form on the next page and see the Osher Program Administrator, your account sponsor, who will finish completing the Computer Account form with you.
3. The Administrator will send the completed form to the Information & Technology Services (ITS) department, where your account will be created and a user name and password will be issued.
4. The Administrator will send you instructions on how to access your account.

Account maintenance

After the creation of your computer account, you will receive several emails annually from the ITS department regarding the following actions you will need to take.

- **Account renewal:** your account needs to be renewed annually. You and the account sponsor (the Osher Program Administrator) will both receive a renewal email. The sponsor will check whether you are still

a Full member in good standing and then renew your account.

- **Password reset:** once a year you are required to update your password which is private and known only by you. Follow the instructions in the email to update the password. **If you have trouble, please call the ITS Helpdesk at 585-475-HELP.**

Fill out the Computer Account Request form on the next page.

Section I – Required Information (Please Print)

Name: _____
 (First) (MI) (Last) Email: _____

University ID Number: _____ Athenaenum Bldg.
 50 Fairwood Dr. Suite 100

Department/Division: Osher Lifelong Learning at RIT/
 Government & Comm Relations Building/Room: Rochester NY 14623 Phone: 585-292-8989

Job Title: Member of Osher Lifelong Learning Institute (OLLI) at RIT

Section II – Action Requested

Username (max 20 characters. No symbols, no spaces): _____ (first initial + last name + olli, e.g.: jdoeolli)

Username Required

Creation/Activation

Deletion Reason: _____ Date required: _____

Name/Ownership Change (accounts)
 From Name: _____ To Name: _____

Access Requests (e.g. fileshare access): _____

Section III – Department Information

Department Number: 04000

Account type (check all that applies):

- Faculty (Adjunct)
- Staff
- Finance & Administration



If the following account types are selected, you must complete info on the right

- Contract Employee
- Student Employee
- Department*
- Authentication Only*
- Vendor*
- Other* _____

Acct Sponsor UID: 138003329

Expiration Date: One year from activation date

This account requires:

- Email Web space
- VPN access File Exchanger access

*Supply reason for account: Osher Members are entitled to an RIT computer account upon Osher Program Administrator's approval

Section IV – Authorization

I will comply with the policies of Rochester Institute of Technology and Information & Technology Services as outlined in the RIT Code of Conduct for Computer and Network Use.



_____	_____	_____
Print Name of Requestor	Requestor's Signature	Date
I approve this request, the assignment of computing resources, as well as any necessary charges to the above account.		
_____	_____	_____
Print Name of Department Head	Department Head's Signature	Date

**Bring this form to the Osher Program Administrator after filling out
Sections I & IV.**

Liberal Arts Course Auditing

In addition to taking courses offered at Osher, Full members have the opportunity to **participate in available courses offered through the College of Liberal Arts**. There are many courses available in the areas of Criminal Justice, Writing, Languages, Literature, The Arts, History, Science, Technology & Society, Philosophy, Anthropology, Economics, Political Science, Psychology, Sociology, Public Policy, and Communication.

- An RIT Student ID card and Computer Account are required to take courses on campus.
- The start dates of RIT's semesters are not always the same start dates as Osher's terms. Please plan accordingly.
- Classes that are full or waitlisted are not Osher eligible.
- Seating is not guaranteed. Approval is at the discretion of the professor.
- Matriculated students have registration priority; your request may not be approved until right before the semester begins.
- Do not register yourself online through the RIT system or you will be billed for tuition at the regular RIT rate.
- Please do not go to class without prior confirmation from Osher staff and/or the Office of Student Services.

Find out what courses are available in the RIT College of Liberal Arts (CLA) using the online course catalog search (tigercenter.rit.edu/tigerCenterSearch/#/search).

1. Click on Class Search.
2. Click the semester menu and choose the one you are interested in.
3. Click on "Advanced Search".
4. Choose "RIT Main" as the campus.
5. Choose "College of Liberal Arts" as the college.
6. Choose a "Course Subject" if you so desire, or leave it blank to bring

up ALL courses.

7. Choose any other details/attributes you'd like to use to filter the search (optional).
8. Click the "Save Options" button.
9. Click the "Search" button, and then all the courses will be listed.

Fill out the form on the following page to request the courses you'd like to audit.

The instructions on accessing the course catalog (above), and the course registration form (on the following page), also can be found online at rit.edu/gcr/osher/sites/rit.edu.gcr.osher/files/libartsaudit.pdf .

Osher Registration Form for RIT's College of Liberal Arts Courses

Fill out the information below and submit this form to Osher staff. Please note:

- Classes that are full or waitlisted are not Osher eligible.
- Seating is not guaranteed. Approval is at the discretion of the instructor.
- Matriculated students have registration priority; your request may not be approved until right before the semester begins.
- Do not register yourself online through the RIT system or you will be billed for tuition at the regular RIT rate.
- Please do not go to class without prior confirmation from Osher staff and/or the Office of Student Services.

Member Information

Name: _____

Address: _____

Telephone: _____

Email: _____

Date of Birth: _____

The following are required to enroll. If you don't have these items, we will work with you to get them.

Do you have an RIT student ID card? Yes No

If Yes, enter your UID number (9-digit number; NOT printed on your ID card)?

_____ (leave blank if you don't know it)

Do you have an RIT computer account? Yes No Not Sure

Do you have an RIT MyCourses account? Yes No Not Sure

Course Information

Name: _____

Number: _____

Day: _____

Location: _____

Instructor: _____

I understand this course is a listening and observation course; RIT college credit will not be granted.

Sign & Date:  _____

For office use only

Date Received:

OSS Approval Date:

Instructor Approval Date:

Participant confirmation/denial date:

Bring this completed form to an Osher staff member.

Audiology Services

Having an RIT Student ID card and UID number are required to take advantage of audiology services.

RIT's National Technical Institute for the Deaf (NTID) Communication Studies and Services Department (ntid.rit.edu/css/audiology) in the Lyndon Baines Johnson (LBJ) building (# 60 on the campus map) provides audiological services to members of the RIT Community (students, faculty, staff, alumni, and members of Osher): **hearing tests, hearing aid checks, consultations, and hearing aid evaluations.** At the Hearing Aid Shop (ntid.rit.edu/css/theshop | 585-475-6473), audiologists are available for several hours each weekday during the academic year (September through May) to answer questions. The staff can **schedule appointments, make and modify ear molds, sell batteries, testers, assistive devices and accessories, and many other services.** Either parking lot L or M is a convenient place to park.

Wallace Library

Wallace Library is very impressive in terms of the range and diversity of services and features offered to members of the RIT community which, of course, includes members of Osher. The Wallace Library is a high technology, multimedia resource center, connected to a wide array of information resources and online library services. The Reference Desk is staffed with reference librarians ready to assist with any research project.

Go to library.rit.edu for an overview of what's available at this remarkable resource. Remember, your Osher membership, RIT Student ID card AND UID number gives you access to your library account. In order for an Osher member to have access to the RIT Library system, the member must **go in person to the library and complete an activation form at the circulation desk.** The ID card must be shown at that time to verify eligibility to have a library account.

Java Wally's Café

The library is much more than books; it's a place for the community to gather, talk, connect, and explore new ideas. In partnership with Java's Cafe located at 16 Gibbs St. in downtown Rochester, the Wallace Library invites you to Java Wally's (library.rit.edu/javawallys/) to enjoy fresh

gourmet coffee, tea, smoothies, lemonade, and light snacks while relaxing in a casual, comfortable atmosphere. Student artwork adorns the walls.

Travel Programs

Osher members are also able to **participate in RIT-sponsored alumni travel** programs. Information is available at rit.edu/alumni/educational#travel-program.

Parking Privileges

Osher staff has a **limited number of campus parking permits you can borrow** if you are taking a course on campus or going to an event. You may park in any spot marked “Visitor” or any general, unmarked spot. Parking is not permitted in any area of a lot where there are “Reserved” signs.

You may also stop at the Welcome Center/Information Booth any time you are on campus and get a parking pass. Parking rules can be reviewed at rit.edu/parking.

Events on Campus

Throughout the school year, there are various events that may be of interest to Osher members. Events include musical performances, theatre performances, workshops, and conferences among others. **To find out what events are coming up, go to events.rit.edu.**

Campus News Emails

If you are interested, you can subscribe to **News & Events Daily** (rit.edu/get-news-events-daily), an online newsletter delivered to your email inbox. Each issue features campus and sports news, photos, upcoming campus events, and more.

Recreation, Shopping, & Food

Gordon Field House and Activities Center

The Gordon Field House and Activities Center (GFH&AC) (rit.edu/fa/arenas/gordon-field-house/about-facility) is a 160,000 square foot, two-story center.

A Full Osher membership, an RIT Student ID card, and an additional fee (see link to membership rates, below) are required to use the GFH&AC facilities.

The facility includes:

- A 60,000 sq. ft. field and event venue with an **indoor 200 meter track** for walking or jogging
- Judson/Hale Aquatics Center for both competition and recreational use includes a 25-meter, **eight-lane lap pool, and a recreation pool** with a lazy river and other features
- Fully equipped 16,000 sq. ft. Weidman Fitness Center is a two-story **fitness facility with various weight machines, free weights, and cardiovascular equipment**. An additional feature is the “personal trainer” program. A free initial consultation includes a fitness and nutritional assessment. For ongoing individual training sessions tailored to meet individual fitness goals, a fee applies.
- Clark Gymnasium with **basketball, badminton, and tennis courts** available for use (basketballs, badminton equipment, and tennis racquets and tennis balls can be signed out). A number of racquetball courts are available but personal equipment must be used.
- Frank Ritter Ice Arena offering **recreational ice skating**
- An arena for **entertainment, theatre, concerts, lectures, and other events**. Tickets for all events may be purchased at the GFH&AC Box Office. To find a complete listing of events, access the RIT events page online at events.rit.edu.

To participate in any of the aforementioned activities, you must:

1. Go to the GFH&AC office on the 2nd floor of the center.
2. Park in Lot D or Lot U. From Lot D, walk on the side of the building until you reach the campus walkway by climbing the outside stairs.
3. Make a left to enter the main entrance. (From Lot U, walk toward the building, follow path to the campus walkway and enter the entrance that will be to the right) The office is on the left after entering.
4. **Present your RIT Student ID card and indicate the length of time for which you would like a membership (3, 6, 9, or 12 months).**

Osher members are considered “Friends of the University” and current rates are at rit.edu/~w-criw/membership.php.

5. Pay the fee indicated by check or credit card and your RIT Student ID card will become your GFH&AC membership card.

Better Me Wellness Classes

With a wide variety of classes like Aqua Fitness, Yoga, Indoor Cycling, and Boot Camp, Better Me has a class for you. Whether you're a beginner or an athlete, our certified instructors will adjust each class for your fitness level and experience. See rit.edu/fa/betterme/get-moving/group-exercise for more information and class schedules.

Please note: access to unlimited Better Me classes requires a membership to the GFH&AC as well as an additional “class pass” fee per semester.

Student Alumni Union

The Student Alumni Union (SAU) building (#4 on the campus map), is a hub of activity. The name was selected to reflect the philosophy that this building should be available for the benefit of every member of the RIT community: students, faculty, staff, alumni, and visitors alike. The SAU is the home for the Ingle Auditorium, clubs, activities, and dining and shopping options such as Digital Den (rit.edu/fa/digitalden), RIT’s electronics store.

Global Village

Supporting the global and entrepreneurial missions of RIT, Global Village (rit.edu/fa/globalvillage/) prepares students to enter a worldly living environment. In addition to suite-style housing, a fire pit, and elegant water features, the complex also features a number of services including the HUB Print Center and Post Office, Better Me Wellness Center, Global Village Cantina and Grille, The Market at Global Village, and Shear Global Hair Salon. Check out Shop One (rit.edu/fa/shopone/), a unique gift shop featuring RIT-made art, craft, and design.

Park Point

Located on the corner of John St. and Jefferson Rd., Park Point (americancampus.com/student-apartments/ny/rochester/park-point) features housing, restaurants, retail services, and outdoor concerts, all open to the public. Visit Lovin’ Cup Bistro (lovincup.com/) for great food and drinks. At **Barnes & Noble @ RIT** (rit.bncollege.com/), the official university bookstore, your RIT **Student ID card is good for a 10% discount.**