



**2025- 2026
Graduate Student
Welcome Guide**

RIT



You're on to something amazing.

Welcome

Starting this new adventure may feel exciting and perhaps a bit overwhelming. Follow this Welcome Guide to successfully navigate your journey to becoming an RIT graduate student. Here, we've compiled the most important information for you so you know what to expect and what you'll need to do before arriving on campus. And don't forget – if you have any questions, our team is here to help.

 gradstudies@rit.edu  585-475-6492



Contents

Welcome, Tigers!	1
Get Connected	2
Accepted Graduate Student Checklist	4
Important Dates	6
Campus Traditions	7
Graduate Orientation	8
Follow us on Social Media	10





Welcome, **Tigers!**

On behalf of everyone at RIT, it is my pleasure to welcome you to our Tiger family. Your decision to attend RIT is the beginning of what I know will be an extremely rewarding experience for both you and your family.

Our students – YOU – are essential to the future and direction of RIT. Here you will find endless opportunities to make your mark on our RIT community, the greater Rochester area, and beyond. As you embark on this exciting journey, I encourage you to let your dreams soar – take advantage of our one-of-a-kind opportunities to discover and explore. But remember, you are not alone in this journey. The staff and faculty at RIT are incredibly passionate about their work and are eager to help you in a time of need as well as celebrate your successes along the way.

You will receive frequent email communications containing updates and information as well as action items that you will need to complete to ensure a smooth transition. Please reach out if you have any questions or if there is any way that we can help you as you prepare to launch your RIT experience.



I wish you all the best in the coming year!

Sandra (Sandy) Johnson, Ed. D.

She/Her/Hers

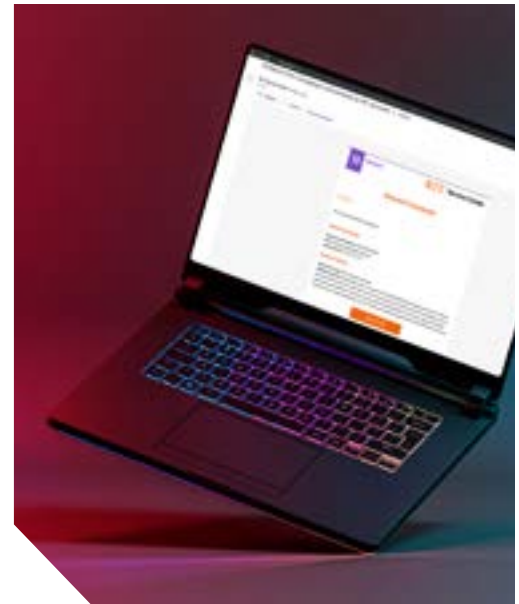
Senior Vice President for Student Affairs

Get connected

We will be sharing a lot of new information with you as a new grad student, but don't worry if you feel like your brain has temporarily run out of storage space – we don't expect that you will remember all of it.

Our Graduate Orientation web page will serve as your information hub and includes the accepted graduate student checklist, featured orientation events, RIT resources, links to past communications, and more.

If you have questions or are looking for information, start by going to rit.edu/gradschool-orientation.



Start Here

Set up your RIT account

You should have already received an RIT account activation notice sent to the email address supplied on your admissions application. By setting up your account, you will gain access to RIT's secure applications, some of which you will need to access to complete your pre-arrival requirements.

rit.edu/its/rit-computer-accounts

A successful transition to RIT requires your active participation. Plan to connect with important resources and information, and complete all necessary actions required of you as an incoming student.

Important ways to connect with RIT before your first semester starts:

Accepted Graduate Student Checklist

The Accepted Graduate Student Checklist will help you navigate the required action items you must complete before you arrive at RIT. It is important to note that some action items contain specific deadlines, so we encourage you to review the complete checklist as soon as possible and take note of important dates and deadlines.

Are you an International Student? Be sure to visit the **International Student Services (ISS) Page** for important ISS Orientation Information.

Email Communications

Important information will be periodically sent to you via email. Please check your **RIT email** regularly and pay close attention, as these emails will include important announcements and updates on pre-arrival requirements and unique opportunities made just for you.

You will also receive newsletters delivered directly to your email inbox. The **New Graduate Student Newsletter** will introduce you to campus resources, provide you with important updates, and serve as a timely reminder for important tasks that must be completed prior to your arrival.

Virtual Orientation

Jump start your Orientation experience with our RIT Virtual Orientation. The virtual component of your Orientation experience will provide you with important information, including an introduction to services and resources.

You must complete all **RIT Virtual Orientation** modules before you arrive on campus for your in-person Orientation experience. Feel free to go through this program at your own pace. If you need to take a break, you can log back in at any time and pick up where you left off.

Write down your questions and bring them with you to Orientation. We are eager to answer any questions you may have about your RIT journey.

virtualorientation.rit.edu

Save the Dates: Accepted Graduate Student Webinars

Join us Nov. 18, 9 a.m. or 5 p.m., Dec. 10, 9 a.m.
and Dec. 17, 9 a.m., EST.

Accepted Graduate Student Checklist

Start Here

There are a number of tasks and requirements that you must complete before your arrival—make sure to review the checklist and the Application Portal for important deadlines. Start checking a few things off of your list today.

View the full [Accepted Graduate Student Checklist](#).

□ **Submit Final Transcripts and Degree Certification**

All graduate students enrolled in another college must submit final official transcripts. If you will receive a degree prior to enrollment at RIT, final transcripts must indicate receipt of the degree and conferred date.

Transcript Requirements

International Students/International Colleges and Universities:

- Official Final Transcript(s) (for all universities/colleges attended) – English and foreign language versions
- Official Degree Certificate(s) (international universities only) – English and foreign language versions

US Citizens/US Colleges and Universities:

- Official Final Transcript(s) (for all universities/colleges attended)

How to Submit Transcripts

When all your classes are complete, make arrangements to submit transcripts to the Office of Graduate Enrollment Services:

- **By Mail** – Original transcripts issued by your university and sent to RIT in a sealed envelope. (If they are mailed to you, they must remain in their original, sealed envelope.)
Attention: Office of Graduate Enrollment Services
Rochester Institute of Technology
Bausch & Lomb Center, Bldg. 77, Room A-130
58 Lomb Memorial Drive
Rochester, New York 14623-5604
- **Digital Copy** – Some institutions allow you to request a digital copy. You can request a PDF official copy be emailed to gradinfo@rit.edu.

- **In-Person** – You may present them in-person in their original, sealed envelope.

□ **Sign in and manage your eServices account**

eServices (eservices.rit.edu) is a secure online portal where you can pay bills, view and accept financial aid, view grades and schedules, request a payment plan, and request a refund. You can add and manage authorized users in the “Manage Accounts” section of eServices. Billing info is emailed to you and up to three others. For more information about billing, visit rit.edu/sfs.

□ **Complete and submit your health history and immunization forms**

You must complete all required health documents located online at wellnessportal.rit.edu. For detailed information about New York State and RIT health history and immunization requirements, visit rit.edu/studenthealth/immunizations.

□ **Update emergency contact information**

Update your emergency contact information in the Student Information System at rit.edu/studentcontact. If you are unable to access the Student Information System, visit help.rit.edu/sp to report an issue.

□ **Snap a selfie for your university ID**

Take a selfie and create your own personalized student ID for pickup during Orientation. View photo requirements and learn more at rit.edu/its/id-cards.

Important Dates

First Week of December

RIT Bill Available to View in e-Services

January 15

RIT Bill Payment Due Date

January 9 | 10:00 a.m.

Orientation and Campus Resource Fair

January 9 | 11:00 a.m.

Graduate School Orientation and Semester Kick-Off

January 12

Classes Begin – Get ready to launch your academic journey at RIT!

Learn more about these important dates at rit.edu/gradschool-orientation.



Signature RIT Traditions



TigerFest

TigerFest is one of RIT's signature fall traditions, welcoming Tigers back to campus with a week of events, activities, and opportunities to get involved.

Spring 2026



FreezeFest – Jan. 25-Feb. 7

Grab your gloves and embrace the cold during RIT's annual winter celebration! This longstanding tradition features multiple days of festivities, including hot cocoa tastings, ice skating, and more.

campus traditions



FallFest

Crisp air and crunchy apples mean it's fall in Rochester! We traditionally kick-off RIT's annual fall themed celebrations with FallFest.



Brick City Homecoming & Family Weekend

This yearly tradition honors RIT's families, students, alumni, staff, and friends of the university. Each year we host many Brick City Weekend activities: distinguished speakers, the Brick City 5k race, Tiger sporting events, and more!



SpringFest – April 16-19

Wrap up the end of the school year with a celebration of all things spring! SpringFest is a great way to unwind and have fun before finals. Join us for music, food, games, and more.



Imagine RIT – April 25

Where creativity and innovation come to life, Imagine RIT features the extraordinary work of our students, faculty, and staff. This university-wide event features hundreds of exhibits and welcomes visitors of all ages year after year.

Explore more at rit.edu/studentlife/campus-traditions.

Spring Graduate Orientation



Save the Date!

**Graduate School Orientation
and Semester Kickoff: Jan. 9, 2026**



Orientation Campus Resource Fair

Jan. 9, 2026, 10:00 a.m.

Your on-campus Orientation will help you connect with campus resources and your fellow RIT Tigers through a variety of events and activities. Stop by the Resource Fair to get your questions answered, meet members of the RIT community, and receive info about available RIT and area resources and services.

Graduate Orientation & Semester Kick-Off

Jan. 9, 2026, 11:00 a.m.

Graduate Orientation will provide an introduction to RIT Graduate School services, graduate student organizations, and an overview of some need-to-know resources. A welcome reception for new and returning graduate students will follow to celebrate the start of the semester!

If you have any questions, contact
[**gradstudies@rit.edu**](mailto:gradstudies@rit.edu).

Follow us on Social Media

Rochester Institute of Technology

 Rochester Institute of Technology

 rittigers

 RITTigers

 rittigers

RIT Graduate School

 ritgradlife

 RIT Graduate School



RIT Student Life

Connect with and get updates from your fellow RIT Tigers. These #RITstudentlife ambassadors will share weekly event highlights and timely tips to help you get connected and be successful during your time at RIT.



RIT Student Life



RITstudentlife

RIT Accepted Class of 2025/26

Meet your future classmates, learn more about life at RIT, find roommates, and ask current students questions!



RIT Official Graduate Admits



RIT Official Graduate Admits



