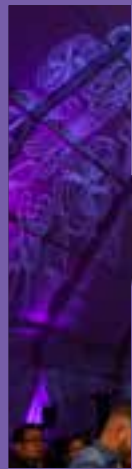


Home of

Thinkers Makers Home Doers



rit.edu/housing

In person
Grace Watson Hall

By phone
(585) 475-5000

f @ t @RITHousing

Service portal or online chat
help.rit.edu



RIT | Housing

Upper Class

Apply for your RIT housing

Your community
of learning, living,
and laughter is waiting.

Living in RIT Housing

RIT Housing is the Home of Thinkers, Makers, and Doers and is an inclusive environment for living and connection. In partnership with a network of support services, we are along for the ride to promote your pursuit of a successful college experience.

Explore campus living within our residential communities of diverse interests, each designed with an emphasis on comfort, safety, and easy access to technology, academics, and campus services.

APPLY NOW!

Apply for your RIT housing today.



Scan QR code and begin your contract or visit online at myLife.rit.edu

Only RIT Housing can provide you on-campus convenience that ensures you have a connected experience.

Advantages of RIT Housing

No subletting

No subletting needed.

9-month contracts

9-month housing contracts that coincide with the academic year.

Inclusive

Inclusive environment for living and learning.

Safety

Safe and secure environment with card swipe access, Public Safety patrols, and on-site Residence Life staff.

Options

Varying types of housing offering singles, multi-occupancy, and a range of rent rates.

Unlimited data

No cap on data or utility usage.

Convenience

Convenient location with access to dining, academics, and recreational facilities.

Transportation

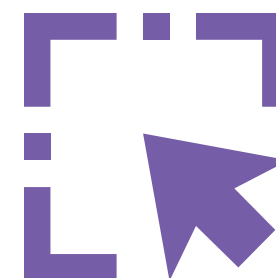
Free shuttle service around campus and to local shopping.

Co-op and study abroad

No termination fees when leaving for co-op and study abroad.

Utilities

All utilities and features are included – high-speed wireless, Tiger TV, laundry, furnished and unfurnished options.





Students living in RIT Housing consistently

perform better academically

than students living off-campus.

We're here for you.

Congratulations on your decision to become an RIT Tiger! The staff at RIT Housing is excited to welcome you to campus and take you through the RIT campus living experience.

RIT housing is the home of Thinkers, Makers, and Doers and we provide a place to live embedded in a community of learning and collaboration that is life-changing. Moving to a new place takes courage, but you will find that living on-campus gives you opportunities to develop friendships, become inspired to work on creative projects, and engage in new experiences in a safe and residential atmosphere.

RIT housing is an inclusive environment for living and connection. Our housing is full of diverse students with great capabilities. You will find many similarities among your fellow peers; you'll also find differences. You will learn from each other and explore life together. We, along with a network of support services, are along for the ride to promote your pursuit of a successful college experience.

Explore all of our housing options and find the best community for you. Your RIT living experience is within these pages, as well as dining and campus resources. We look forward to welcoming you.

Residential Communities

Explore all of our housing options and find the right community for you.

University Commons

Suite-style living with private bedrooms and shared bathrooms. for independent living.

Global Village

Suite-style living that embraces global awareness with communal spaces for gaming and socializing.

Perkins Green

Neighborhood-like apartment community with green space for gathering outdoors.

Riverknoll

Townhouses designed to infuse your personal touches.

RIT Inn

Premium amenities for independent lifestyles.

Residence Halls

Thirteen halls to choose from and a mixture of special interest and lifestyle floors.

175 Jefferson

Single-rooms exclusively with private baths for independent living lifestyle.

Residence Hall Refresh

Halls continue to be- updated to provide a housing experience that is modern, comfortable, and convenient - which includes air conditioning, and upgraded quality finishes. Additional upgrades include landscaping, residence hall quads, Grace Watson Lobby, and the first floor of the Residence Hall towers. Renovations include:

Bathroom

- Flooring
- Ceilings
- Shower stall partitions
- Vanity refresh
- Lighting
- Painting

Hallway

- Carpet
- Wood ceilings
- New room doors
- New door hardware
- Decorative side panels

Sleep rooms

- Air conditioning
- Additional lighting

Lounges

- Paint
- Flooring
- Lighting



University Commons

A short walk to academic buildings, these suites offer all-inclusive living spaces for independent upper-class students. The modern interior features a fully equipped, open concept kitchen and living room for gathering with friends. Four students to a suite; each has a private furnished bedroom with a full-size bed, share two bathrooms, and a laundry in-unit.

Room Types & Occupancy

4-Bedroom Suite

kitchen, living room, two full baths, and laundry room

4

people



Key Features

- Private bedroom with full size bed
- Fully furnished
- Full kitchen
- Laundry in suite
- Central air conditioning
- Basketball court
- Renewable contract
- Electronic safety alarm system tied to Public Safety



4-Bedroom Suite



Global Village

Global Village, a LEED Certified Silver building, embraces all that campus living has to offer while being globally-responsible. Situated on the west side of campus, this suite-life living is located in RIT's Global Village and steps from global inspired dining, fair trade and local shopping, heated outdoor seating, and fitness facilities with close access to academic buildings.

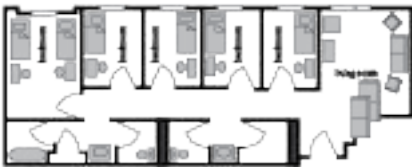
Modern interiors complement a mix of 4 to 6 person suites and studio apartments with communal spaces for gaming and socializing. This upper-class student residence is supported by a Resident Advisor while embracing independent living.

Room Types & Occupancy

5-Bedroom Suite with kitchen living room and 2 full baths	6 people	
5-Bedroom Suite without kitchen living room and 2 full baths	6 people	
4-Bedroom Suite living room with kitchen and 2 full baths	4 people	
Studio sleep and living area, kitchen, and full bath	1 person	

Key Features

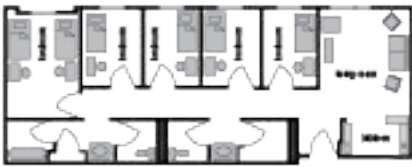
- Furnished
- Full kitchen access
- Central air conditioning
- Mobile access for entry
- Electronic safety alarm system that is tied to Public Safety
- Live-in Residence Life staff provide close support
- Indoor and outdoor communal spaces and a Maker Space
- On site dining, retail, laundry, and postal services
- Fitness center on property



5-Bedroom Suite without kitchen



4-Bedroom Suite



5-Bedroom Suite with kitchen





Studio

Perkins Green

Perkins Green, located on the east side of campus, offers the ideal school-life balance. The neighborhood is situated in a park-like setting that is a short walk to academic buildings, allowing a separation between campus and home. The community is close-knit with greenspace. Perkins Green is a great value for the student looking for a furnished, budget-friendly option.

Room Types & Occupancy

1-Bedroom kitchen, living room, and full bath	1 person	
2-Bedroom Apartment kitchen, living room, and full bath	4 people	

Key Features

- Fully furnished with full kitchen
- Free laundry on property
- Outdoor grill and courts
- Renewable contract



1-Bedroom



2-Bedroom Apartment (PG I)






2-Bedroom Apartment (PG II)



Riverknoll

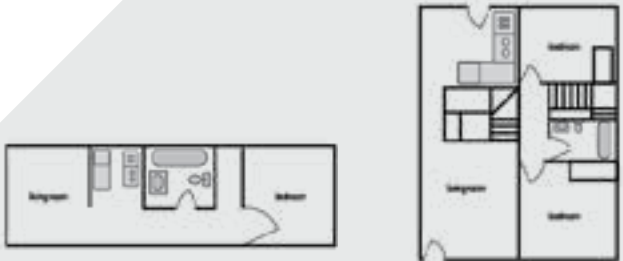
Riverknoll is steps from Global Village and academic buildings. The quiet community is home to many upperclass students who value the campus proximity and academic focus of the community. This is a great choice for students looking to infuse their style into their living space. Townhouses feature single and double occupancy bedrooms and is one of the best values for on-campus living.

Room Types & Occupancy

3-Bedroom unfurnished Townhouse 2 single and 1 double bedrooms, kitchen, living room, and full bath	4 people	
2-Bedroom unfurnished Townhouse 1 single and 1 double bedrooms, kitchen, living room, and full bath	3 people	
1-Bedroom unfurnished Apartment kitchen, living room, and full bath	1 person	

Key Features

- Unfurnished with full kitchen
- Riverknoll 516 - 536 are fully furnished
- Free laundry on property
- Outdoor grill and courts
- Renewable contract
- Closest apartment complex to the academic buildings



1-Bedroom Apartment

2-Bedroom Townhouse





3-Bedroom Townhouse

RIT Inn

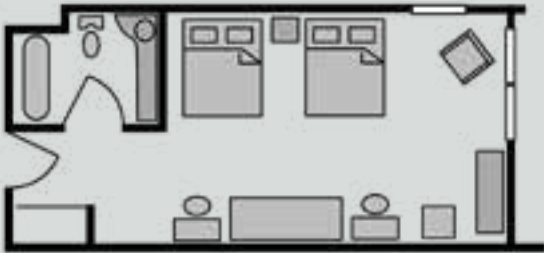
The RIT Inn offers students an amenity-rich living experience and is ideal for those with independent lifestyles. Premium amenities come at a great value and include air conditioning, indoor pool and sauna, on-site fitness center, bi-weekly housekeeping, and on-site dining. The RIT Inn has Resident Advisors who facilitate social gatherings and offer personal and developmental support to students. The RIT Shuttle provides free transportation to and from the RIT Inn and campus and local shopping. RIT Housing will reimburse students who live at the RIT Inn and bring their car with them the cost of an on-campus general parking permit.

Room Types & Occupancy

Double Occupancy Furnished including TV, private bath and shower	2 people	
Double as a Single Occupancy Furnished including TV, private bath and shower	1 person	

Key Features

- Microfridge and TV
- Standard cable and Tiger TV
- In-room-controlled air and heat
- Free bi-weekly housekeeping
- On-site free laundry
- Swimming pool, hot tub, and fitness center
- Free on-campus general parking permit
- Free express shuttle service to campus
- Dining and coffee shop
- Renewable contract



Double Occupancy









Double

Residence Halls

Students living in Residence Halls are embedded in a learning community of diverse interests and lifestyles.

Located on the east side of campus, we have 13 residence halls to choose from, along with a mixture of special interest and lifestyle floors, in which students are encouraged to explore, connect, and learn in this supported living environment. Each floor has Resident Advisors who facilitate social gatherings and offer personal and developmental support to students. The halls are connected by a set of underground tunnels with easy access to dining, postal services, laundry facilities, and the quarter mile.

Room Types & Occupancy

Single	1 person	
Double	2 people	
Triple	3 people	
Quadruple	4 people	

Key Features


- Furnished
- On-site free laundry
- Microfridge (microwave, refrigerator, and freezer combination)
- Carpet*
- Convenient location with access to dining, academics, and recreational facilities
- Resident Advisors serve as first line of support and facilitate on-campus experiences.
- Special Interest Houses provide a community for students to share common interests
- Fitness Center

*Some residence hall rooms have no carpeting in anticipation of meeting an ADA accommodation. Students without accommodations may be placed in these rooms.

175 Jefferson

175 Jefferson sits on RIT's campus and offers students a private living experience which is ideal for those with independent lifestyles. Amenities come at a great value and include single rooms exclusively with private baths, air conditioning, smart TV in room and RIT Dining micro-market on-site with grab-and-go food items and vending.

Room Types & Occupancy

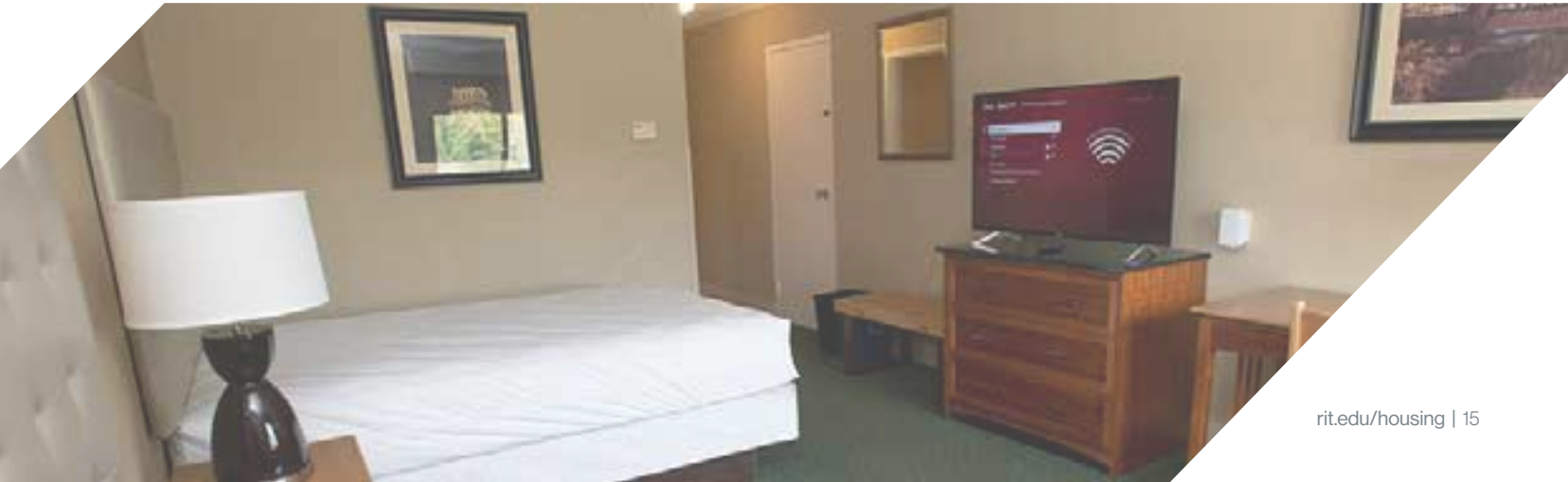
Single	1 person	
Furnished including TV, private bath and shower		

Key Features

- On-site free laundry
- Air Conditioning
- Free Express Shuttle Service
- Fully furnished
- TV in room
- RIT Dining micromarket



Single person bedroom



Amenities Comparison Chart

	Residence Halls	Global Village	RIT Inn & Conference	Perkins Green	Riverknoll	University Commons	175 Jefferson
9-month academic year contract	•	•	•	•	•	•	•
Accessible units available	•	•	•	•	•	•	•
Air conditioning ²	•	•	•			•	•
Basketball facilities		•				•	
Blue-light emergency phones & security cameras	•	•	•	•	•	•	•
Co-op/Study Abroad reduced-rent option	•	•	•	•	•	•	•
Dishwasher						•	
Ethernet jacks	•	•	•	•	•	•	•
Fitness center	•	•	•				
Free on-site laundry facilities	•	•	•	•	•	•	•
Free shuttle bus service	•	•	•	•	•	•	•
Free Tiger TV ³	•	•	•	•	•	•	•
Free wireless access	•	•	•	•	•	•	•
Furnished*	•	•	•	•		•	•
Gender inclusive ⁵	•	•	•	•	•	•	•
Grills and picnic area	•			•	•	•	
Indoor pool, whirlpool, sauna			•				
Light housekeeping			•				
Live-in Residence Life staff	•	•	•	•	•		
Located on main campus	•	•		•	•	•	•
Locked 24/7	•	•	•			•	•
Microfridge	•		•				•
Microwave		•		•		•	
No security deposit	•	•	•	•	•	•	•
Renewable space			•	•	•	•	•
Rent added to student account	•	•	•	•	•	•	•
Stove and refrigerator ⁴		•		•	•	•	
Suite-style housing ¹	•	•				•	
Television			•				•
Volleyball court	•	•		•			
Washer and dryer in suite						•	

*Riverknoll 516 - 532 are furnished with a bed, dresser, table, couch, and microwave.



To complete a Housing contract:

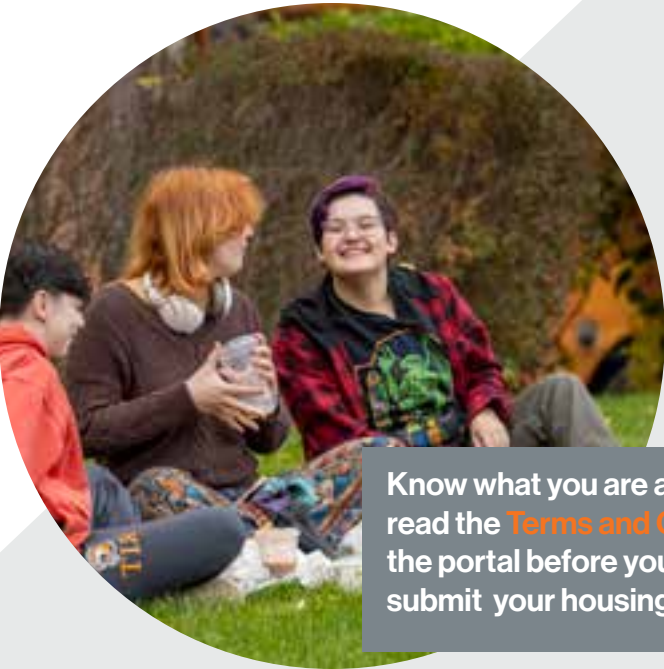
- Visit myLife.rit.edu
- Log in with your RIT computer account username and password
- Click on the Housing & Dining Application
- Select the academic year that applies to you

You are now ready to begin filling out your RIT housing contract. Complete each section of the application.

Graduate and transfer students are assigned to RIT housing on a space-available basis. Placement in RIT housing is not guaranteed.

Once your admissions deposit is paid or waived, you will have access to the RIT Housing contract.

1. In the residence halls, Residence Hall D, Ellingson, and Peterson Halls contain a majority of suite-style rooms.
2. 11/13 residence halls are air conditioned.
3. Tiger TV—live streaming TV.
4. Applies to Global Village suites with kitchens.
5. Gender-inclusive housing provides students the opportunity to live within a room/suite/apartment with other students regardless of sex, gender identity/expression, or sexual orientation.



Know what you are agreeing to—read the Terms and Conditions on the portal before you complete and submit your housing contract.

Things to know about your RIT Housing application

Meal Plans

Students who live in the residence halls, RIT Inn, and 175 Jefferson must have a meal plan. You will select your meal plan on your housing contract. Learn about meal plans at rit.edu/dining.

Smoker/Nonsmoker/No Preference

All residential communities are smoke-free. Smoking cannot occur anywhere inside the building, including the rooms. Accurate information regarding smoking habits is critical to your roommate(s) and room selection. Answer this question on your housing contract honestly. RIT’s Tobacco Restricted Campus policy can be found at: http://bit.ly/UniversityTobaccoPolicy.

Feel the campus spirit from anywhere



RIT AR Experience

Available for download

The vibrancy of the Tiger spirit comes alive with the RIT AR Experience. Step onto campus through portals and see what makes RIT an amazing place to live and learn.



Community Support for Your Success

RIT Housing and The Center for Residence Life support the success of 6,500 students living in RIT housing. In addition to Resident Advisors, you have a team of full-time professionals that provide leadership for all administrative and programmatic functions that enhance your living experience.

RIT Housing

RIT Housing is located in Grace Watson Hall. We assist with housing assignments, lock outs, key losses, and questions regarding your housing billing.

We offer a variety of housing solutions with a wide range of rent rates. These include single to multiple occupancy housing, residence halls, Greek housing, and apartment and suite-style options. Laundry, utilities, and all functional amenities are included. RIT housing contracts coincide with the academic year. Students leaving for co-op, research, or study abroad can rest assured that they can end their housing contract with no fee or subletting needed.

Selecting your housing has never been easier with myLife, our online portal that enables you to complete all of your housing business. Submit housing contracts, and submit maintenance requests all in one spot.



success

Residence Life

A great benefit of RIT Housing is the on-site RIT Residence Life community staff.

Resident Advisors (RAs) are upperclass student staff who play an important part in your campus living experience. RAs are our campus leaders and your first line of support. They facilitate activities and encourage participation in campus activities.

- Provide an engaging environment and encourage participation in community events.
- Help develop a community within their assigned area.
- Answer general questions and provide roommate conflict resolution.
- Directly supervised by full-time staff, Residence Coordinators.

Residence Coordinators (RCs) serve as coaches and counsel students, develop and support residential and institute wide events and initiatives, serve as conduct officers, resolve roommate conflicts, and serve as advisors to student organizations and special interest houses.

RIT's Expectations for Community Behavior

Responsibility, support, respect, integrity and strong moral character are valued and expected within and outside of the RIT community. As members of the RIT campus community, including students, trustees, faculty, staff, and administrators, we will:

- Demonstrate civility, respect, decency, and sensitivity towards our fellow members of the RIT community, and recognize that all individuals at this university are part of the larger RIT family, and as such are entitled to the support and mutual respect that they deserve.
- Conduct ourselves with the highest standards of moral and ethical behavior. Such behavior includes taking responsibility for our own personal choices, decisions, and academic and professional work.
- Affirm through the daily demonstration of these ideals that RIT is a university devoted to the pursuit of knowledge and a free exchange of ideas in an open and respectful climate.

RIT Dining

rit.edu/dining

RIT Dining offers diverse cuisine in vegan, allergen-friendly, international, and staple meals. Restaurants, coffee shops, grab and go, and convenience stores are spread throughout campus with an option to order online and pick up in-store. Late night eats, morning coffee chats, Rochester area visiting chefs, and dining events enhance your campus living experience and provide common ground for solidifying friendships.

Meal Plans

The meal plans are convenient, easy to use, and save money. Meal plans are tied directly to your RIT ID card making purchases contactless and quick. All meal plans include Dining Dollars, which saves you NY state 8% sales tax. All students living in the residence halls, 175 Jefferson and RIT Inn are required to have a meal plan. Find the right plan for you at rit.edu/dining.

Dining Dollars and Tiger Bucks

Dining Dollars is a form of payment that is embedded into a meal plan or can be added to a dining account. Dining Dollars are used to purchase perishable and non-perishable groceries and food items. Funds rollover each semester until graduation.

Tiger Bucks is a form of payment that can be used to purchase food and non-food items at various retail locations around campus, including the RIT Campus Store, hockey game tickets, and printing fees. These funds can be added at any point and roll over until graduation.

Adding funds to your dining account is easy. You have access to transaction history and can request funds from family. Details can be found at tigerspend.rit.edu.

Dietary and Allergy-Related Needs

Keeping students safe is at the center of the food allergy and intolerance policy program at RIT. Students are encouraged to meet with the on-campus registered dietitian to create a plan for safe eating on campus. Additionally, NetNutrition is a tool used to easily access nutritional information on foods served at the dining locations. If students need accommodations related to allergies or other dietary needs (e.g. peanut/tree nut free classroom designation), the Disability Services Office can help. See page 23 for more information.

Over **75** different international cuisines are served on campus.

RIT Dining includes restaurants, coffee shops, concessions, convenience stores, grab and go, and a catering department.



“You meet people and people are excited to meet others and start friendships.”

Disability Service Office

rit.edu/disabilityservices

The Disability Services Office DSO is dedicated to facilitating equitable access for the full RIT experience for students with disabilities. Students with all types of disabilities and access needs are encouraged to request accommodations with the Disability Services Office.

While there is no deadline for accommodation requests, students with housing access needs should begin working with DSO early as possible in order to align with the RIT housing selection and assignment process. Late accommodation requests may result in a “pending availability” status and may not be available before the semester begins. Any housing requests made throughout the academic year and for spring term will also stipulate that they are “pending availability”.

Note: Students requesting housing accommodations with the Disability Services Office must also submit a housing contract to RIT Housing. The accommodation process can be started as soon as a student is officially enrolled at RIT. Details found at rit.edu/disabilityservices/student-resources

Parking & Transportation

rit.edu/parking

Parking and Transportation Services administers parking and transportation services at RIT.

Having a car is not required or necessary. Alternate modes of transportation include the free on and off-campus shuttle, bicycling, ride-sharing, and walking. RIT Transportation Services offers a robust

schedule of shuttles for both on and off-campus travels. Shuttle services are available for transportation between the Residential areas and academic areas on campus. Students in RIT Housing are required to register their vehicle and purchase a Residential Permit.

Public Safety

rit.edu/publicsafety

The Public Safety Department patrols campus seven days a week, 52 weeks a year and provides services dedicated to creating a safe community for the RIT campus. All Officers are trained in emergency medical procedures, CPR, automated external defibrillators, American Sign Language, and crisis intervention.

Blue light security boxes are installed all around campus for emergencies, a car escort, lockouts, and more. Download the TigerSafe app to be a finger tap away.

ResNet

rit.edu/resnet

ITS Resnet provides technical support for machines personally owned by RIT students. Resnet offers a wide range of services from basic machine tune-up and virus scans to file recovery and limited hardware replacement. Friendly residential computing consultants are on hand to assist our customers in troubleshooting and resolving a wide variety of computer issues.

Fredericka Douglass Sprague Perry Hall
Room 43-1065
Phone: 585-475-5000
ITS Live Chat: help.rit.edu

