

# Sensory-Friendly Play: A Study on Toy Design for Children on the Autism Spectrum

## PROJECT OBJECTIVES

The purpose of this project is to study, identify, and recognize the intricacies of autism and create sensory toys that meet the sensory requirements of children with Autism.

I wanted to pursue the ability to boost their play experiences and general well-being. This takes a combination of researching toy design and researching the autism spectrum disorder aimed towards children aged around 3-10 (pre-k - elementary school) → which can be later employed in therapy sessions or serve as gadgets to promote play and focus.

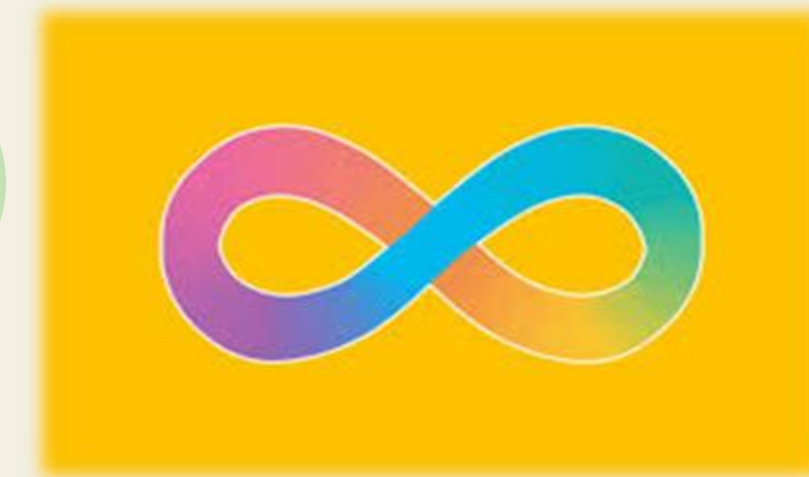
## What is Autism?

Autism, or autism spectrum disorder (ASD), is a sensory neurological disorder, in other words, brain development disorder. Which refers to a broad range of conditions characterized by challenges with social skills, repetitive behaviors, speech and nonverbal communication. This disorder affects their ability to process senses at a neurotypical degree.

## Why Are Sensory Toys Important?



## Neurodiversity & Autism Symbol



## TESTING - OBSERVATIONS



## SENSORY PROCESSING & INTEGRATION

- Vestibular - Balance
  - Tactile
  - Gustatory
  - Olfactory
  - Auditory
- Proprioception - Body awareness
  - Visual



Autism affects an estimated **1 in 36 children in the United States** (American Psychiatric Association, 2013)

## SENSORY TOY DESIGN PROCESS

