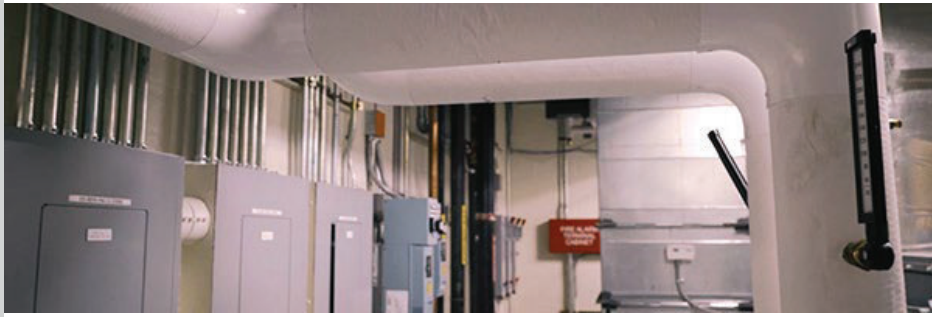


## Crate, Crate Preparation, and Packing Materials Questionnaire

As part of the first phase of a three-year research project, [Cost-Efficient and Environmentally Responsible Preservation Methods for Preparing Paper-Based Objects for Transit and Display](#), IPI is conducting a crate, crate preparation, and packing materials questionnaire. The results of this questionnaire will inform a current inventory of common crate construction and packing materials used to prepare paper-based collection objects for transit, similar to a [survey about sealed frame package materials](#) conducted last November. These materials will be evaluated for cost and environmental waste comparisons, and inform laboratory experiments of crates and crate packing configurations. A summary of the questionnaire results will be shared in a future newsletter.

The questionnaire should take approximately 20 minutes to complete and addresses the following topics specific to traveling paper-based collection objects: 1) Crate construction, packing materials, and preparation practices, 2) Exploring topics related to environmental waste associated with crates and packing materials. The questionnaire will close on August 16, 2021.

[Complete the Questionnaire](#)



## Environmental Management During the Pandemic: Field Study Results

In an effort to understand how changes in mechanical system operations in response to the COVID-19 pandemic impacted collections environments across institutions, IPI launched a field study through an online submission platform from October through November 2020. Nineteen questions sought to address the role of environmental management at institutions, document changes made to mechanical system operations in response to the pandemic, and collect observed impacts to collections environments resulting from the changes implemented. The results demonstrated a high level of successful implementation of sustainable operations among respondents, especially when coupled with a quality, cross-disciplinary environmental management program. We encourage all collecting institutions to examine their practices and consider ways in which they can work towards even greater success in achieving preservation and sustainability goals. IPI is grateful to those who participated in the field study, your willingness to share enriched our understanding. If you have any questions or comments on the field study, or would like to inquire about available resources to develop a sustainable environmental management program, please contact Kelly Krish, Preventive Conservation Specialist, at [kmkp@rit.edu](mailto:kmkp@rit.edu). This work was funded by the National Endowment for the Humanities as part of a larger education and training project.

[Read the Field Study Results \(PDF\)](#)



## WUDPAC Summer Intern Sarah Freshnock

Sarah Freshnock completed her first of three years in the Winterthur/University of Delaware Program in Art Conservation (WUDPAC) in May, and joined IPI for a summer internship in June. Sarah is majoring in preventive conservation and aspires to start a private practice in the American Midwest when she graduates. During her internship she has been spending some time with everyone on staff to learn about the variety of activities and positions at IPI. However, most of her time is devoted to two projects supervised by Al Carver-Kubik, Research Scientist, and Meredith Noyes, Research Scientist. With Al, Sarah is developing new content for IPI's online reference resource, [Graphics Atlas](#). With Meredith, she is learning about the Photographic Activity Test (PAT - ISO 18916:2007) and exploring the potential to use the PAT to better understand sustainable alternatives to traditional enclosure materials.

Sarah notes, "Interning at IPI has been a wonderful experience. I have learned so much about what IPI does and how important this work is for the field. I am excited to take my new knowledge of the PAT back to my classmates and to see the photographs I have loved researching up on Graphics Atlas! It has been a fantastic summer!"



## Microclimates: A Greener Future for Collections Care

Kelly Krish, Preventive Conservation Specialist, co-authored a blog post for the American Alliance of Museums (AAM) Environmental Climate Network earlier this month with Joyce Lee, chair of the Network. The post introduces two case studies focused on using desiccants or a dedicated mechanical system to control relative humidity in exhibit cases. By providing microclimate control instead of conditioning the entire room, appropriate conditions are provided for the objects on display with less energy use and at lower cost.

[Read More](#)

## Upcoming Funding Opportunities

### Sustaining Cultural Heritage Collections Grant Deadline

The next round of applications to the [Sustaining Cultural Heritage Collections \(SCHC\)](#) grant program in the Division of Preservation and Access at the National Endowment for the Humanities are due **January 13, 2022**. This important program offers funding to support sustainable preventive conservation strategies in cultural institutions. IPI environmental consulting services have been a component of many successful SCHC projects. Christopher Cameron, Sustainable Preservation Specialist, and Kelly Krish, Preventive Conservation Specialist, lead IPI's preservation consulting services that assist institutions with improving their preservation environments while making them more energy efficient. If you are considering submitting a proposal that requires environmental consulting services, [please contact us](#).

### Preservation Assistance Grants for Smaller Institutions

**January 13, 2022** is the deadline for submitting applications to [NEH for Preservation Assistance Grants](#). If you are considering applying for funding to support consultations with preservation professionals about establishing environmental monitoring programs or improving preservation environments and have questions about IPI's services in these areas [please contact us](#).

# Do you need help meeting your sustainability goals?

IPI offers a range of remote and onsite consulting and preservation training options. Contact us to start a conversation about how we can assist with achieving your short-term or long-term preservation environment and sustainability goals.

[Contact Us](#)



[Share](#)

[Tweet](#)

[Share](#)

[Forward](#)

The Image Permanence Institute® (IPI) is an academic research center within the College of Art and Design at Rochester Institute of Technology (RIT) dedicated to supporting the preservation of cultural heritage collections in libraries, archives, and museums around the world.

Rochester Institute of Technology  
Image Permanence Institute - GAN 2000  
70 Lomb Memorial Drive  
Rochester, NY 14623  
(585) 475-5199

You are receiving this email because you are subscribed to the Image Permanence Institute mailing list.

[Preferences](#) | [Unsubscribe](#)