



## National Leadership Grant for Museums to Support Mold Research

IPI received a [National Leadership Grant for Museums](#) from the Institute of Museum and Library Services to support a three-year research project titled, *Investigating the Prevention of Mold Germination in Museum Collections During Sustainable Operations and Emergency Response*. IPI's research team will collaborate with conservation staff at Colonial Williamsburg Foundation and with researchers at Georgia Southern University to investigate the relationship between room-level relative humidity, object-level water activity, and the associated risk of fungal germination on historic organic materials. Through the grant, IPI will be purchasing a single-sided nuclear magnetic resonance relaxometer, which will be used to monitor time-resolved and depth-resolved water activity during dynamic environmental control. We look forward to sharing project updates in the years ahead.

[Read more about the project](#)



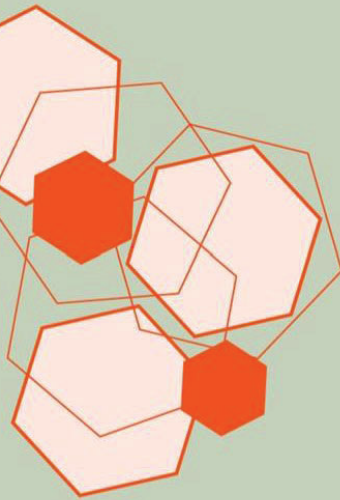
## Update on 3D Printed Research Collections

This Spring, IPI will conclude its inaugural 3D printing research project, *Foundational Research to Inform Preservation Guidelines for the Creation, Collection, and Consumption of 3D Printed Objects in Museums*. One of the project outcomes was the creation of six 3D printed research collections. Two will remain at IPI, and four will be placed with conservation training programs, preservation research laboratories, and research collections around the country. A portion of the collection consists of 18 samples printed from the same 3D file in a range of technologies and materials. These samples were designed by the research team to enable portions to be removed for testing or instrumental analysis. The remainder of the collection consists of five samples printed from a 3D scan of a frame corner that represent different 3D print processes. An additional three samples illustrate other strengths of 3D printing, including an example of 3D printed porcelain. The collection box is accompanied by a key that identifies the samples.

We are grateful to our colleagues at the [Institute for the Preservation of Cultural Heritage](#) and [Winterthur/University of Delaware MS Program in Art Conservation](#) for each accepting to host a research collection and their commitment to making the collections accessible for preservation research and education activities. We are currently discussing potential placements for the remaining two collections.

[Read more about IPI's 3D print research](#)

# MECHANICAL INSIGHTS SYMPOSIUM



## IPI at the Mechanical Insights Symposium

This month Emma Richardson, IPI Director of Research, and Jacek Olender, IPI Postdoctoral Researcher, will both present at the Getty Conservation Institute's [Mechanical Insights Symposium](#). The goal of the symposium is to create a forum to discuss how mechanical research can inform decision-making in the management of museum environments, practical conservation, and the transportation of art objects. Dr. Richardson's presentation will provide an introduction to current IPI research initiatives that are aimed at developing new tools for sustainable environmental management and providing guidance for collection care professionals. Dr. Olender's presentation will discuss preliminary results from a current IPI research project including data pertaining to multiple combinations of cellulose di- and tri-acetate produced in the laboratory and plasticized with two common additives in varied amounts. This data allows for the quantification of changes introduced by the presence of different plasticizers. It will be evaluated to help identify relevant thresholds and acceptable rates of change to support guidelines for collections care of plastic composites.

[Read the symposium abstracts](#)

# Do you need help meeting your sustainability goals?

As a new calendar year approaches, it's time for setting 2025 sustainable preservation goals. IPI can support collecting institutions with environmental monitoring and sustainable preservation planning activities, and education and professional development opportunities. Please [contact us](#) if you would like to learn more about our custom consulting and education programming.

## Funding Opportunities

If you are considering applying for funding to support consultations with preservation professionals about establishing environmental monitoring programs or improving preservation environments learn more about these upcoming funding opportunities.

## Sustaining Cultural Heritage Collections

The next round of applications to the [Sustaining Cultural Heritage Collections \(SCHC\)](#) grant program in the Division of Preservation and Access at the National Endowment for the Humanities are due **January 10, 2025**. This important program offers funding to support sustainable preventive conservation strategies in cultural institutions. IPI environmental consulting services have been a component of many successful SCHC projects. If you are considering submitting a proposal that requires environmental consulting services, [please contact us](#) by filling out this brief survey.

## Preservation Assistance Grants for Smaller Institutions

**January 9, 2025** is the deadline for submitting applications to the [Preservation Assistance Grants for Smaller Institutions](#) grant program. If you are considering applying for funding to support consultations with preservation professionals about establishing environmental monitoring programs or improving preservation environments and have questions about IPI's services in these areas [please contact us](#).

# Save 5% on HOBO monitoring products that are compatible with eClimateNotebook®

IPI has a partnership with Onset, maker of HOBO Data Loggers, that allows eClimateNotebook (eCNB) subscribers to save 5% off the price of HOBO monitoring products that are eCNB compatible. Data logger options include manual and wireless downloading models. Use promotional code **eClimateNotebook5** at the time of purchase to save. Visit <https://www.onsetcomp.com/eClimateNotebook/> for more information. A portion of the proceeds from these sales will be returned to IPI to support our mission.



[f](#) Share

[X](#) Tweet

[in](#) Share

[✉](#) Forward

The Image Permanence Institute® (IPI) is an academic research center within the College of Art and Design at Rochester Institute of Technology (RIT) dedicated to supporting the preservation of cultural heritage collections in libraries, archives, and museums around the world.

Rochester Institute of Technology  
Image Permanence Institute - GAN 2000  
70 Lomb Memorial Drive  
Rochester, NY 14623  
(585) 475-5199

You are receiving this email because you are subscribed to the Image Permanence Institute mailing list.

[Preferences](#) | [Unsubscribe](#)