



Project Safe Neighborhoods: Dispute Related Violence Intervention

Kayla Macano, MS; Irshad Altheimer, Ph.D; John Klofas, Ph.D

Center for Public Safety Initiatives



Background

The goal of this project is to prevent future violence in active arguments of disputes.

- Research has found that the majority of shooting incidents in Rochester, NY, about 60%, are dispute-related. We expect this to be similar in Niagara Falls.

Why have we not focused on disputes in the past?

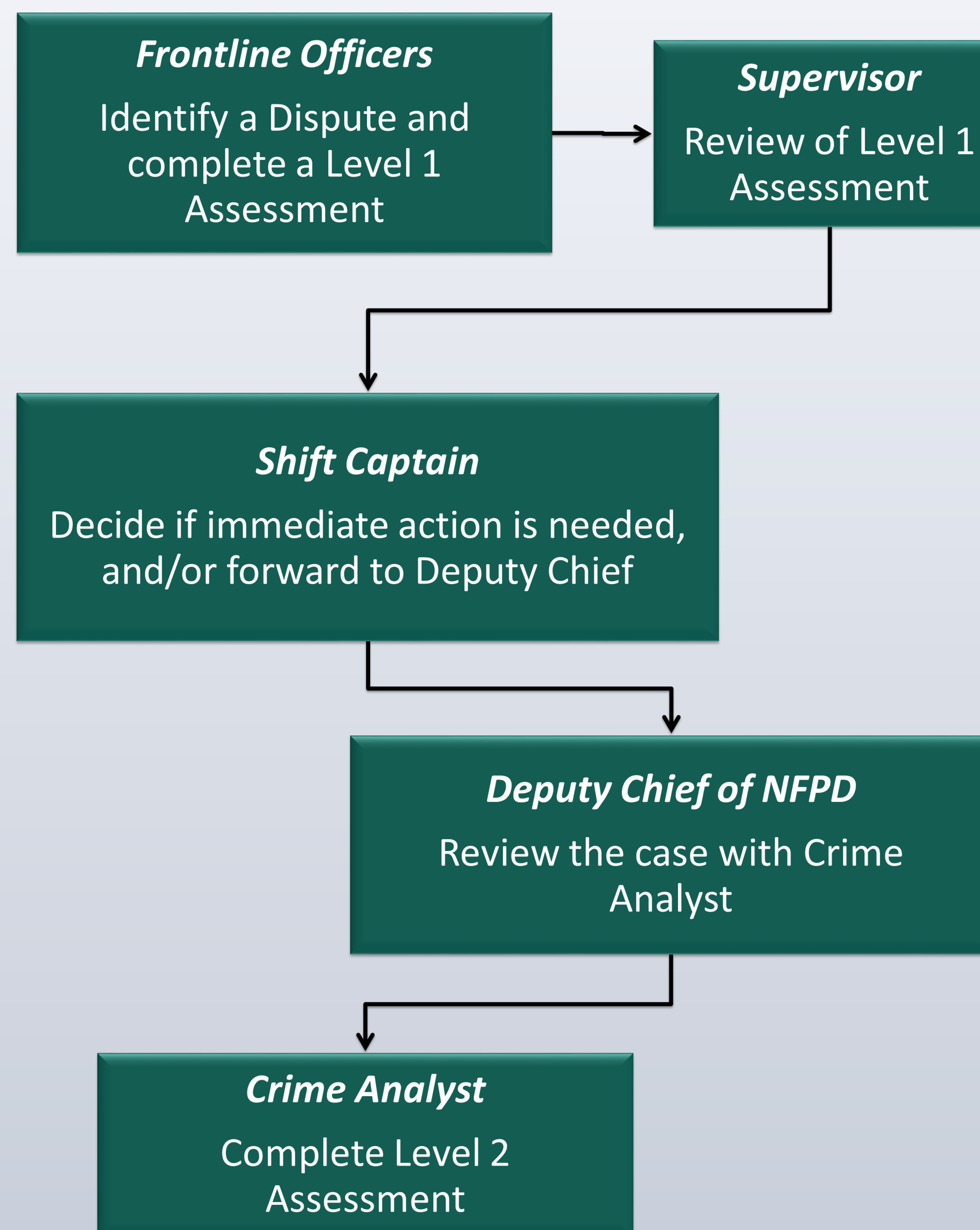
- Typically police work focuses on individual cases, not necessarily identifying combinations of cases or events
- Criminal records also focus on individual cases
- Many interventions focus on group affiliation and group-related interventions
- It was difficult to focus on clusters of cases without the expansion of crime analysis; there are now better tools available

What is a Dispute?

A dispute is:

- An interaction involving conflict and **retaliation**
- Takes place **over a period of time**
- Occurs between **two or more individuals** and the people associated with them
- Disputes are marked by **two or more events** involving confrontation or intimidation
- At least some of those events involve **violent acts or credible threats of violence**

Niagara Falls Dispute Project Process



How Can We Identify Disputes?

- Calls for Service
- Conversations with Community Members
- Street-Level Intelligence
 - Repeated fights
 - Conflict between known violent offenders
- Victims
- Surrogates of Victims (e.g., parents or other family, close friends and associates, significant others, etc.)
- Shootings and other Aggravated Assaults
 - Reckless endangerment – house shot at
 - People stopped in neighborhoods carrying weapons

Potential Interventions

- I. Investigative Interventions** (focused on investigating dispute incidents and making an arrest)
 - Prioritize investigation at the section level by directing resources.
 - Refer to Special Investigations Section (SIS)
 - Jail “Debrief” of dispute participants and other knowledgeable persons
 - Monitor dispute participants’ social media accounts
 - Neighborhood or area canvass
 - Investigate mental health issues
- II. Crossover Interventions** (enforcement action focused beyond the current dispute incidents)
 - Targeted enforcement on key individuals
 - Warrant and DMV checks
 - Support GPS for probationers and parolees
 - Property code enforcement for residence or business
 - School Resource Officer “Knock and Talk”
 - Dispute letter from the Chief of Police
 - Mental Health arrest
- III. Direct Prevention Interventions** (direct preventive action other than arrest)
 - Joint Police and Probation home visits
 - Refer to Center for Dispute Settlement (CDS)
 - Engage significant others (family etc.)
 - Active police mediation
 - Assist in relocating, negotiating or settling debts
 - Link to social services
 - Focused Deterrence “Call-In” and “Custom Notification”

CPSI Contact Information

Center for Public Safety Initiatives
 Department of Criminal Justice
 Building 1, Room 2383
 Rochester Institute of Technology
www.rit.edu/cla/criminaljustice/cpsi