

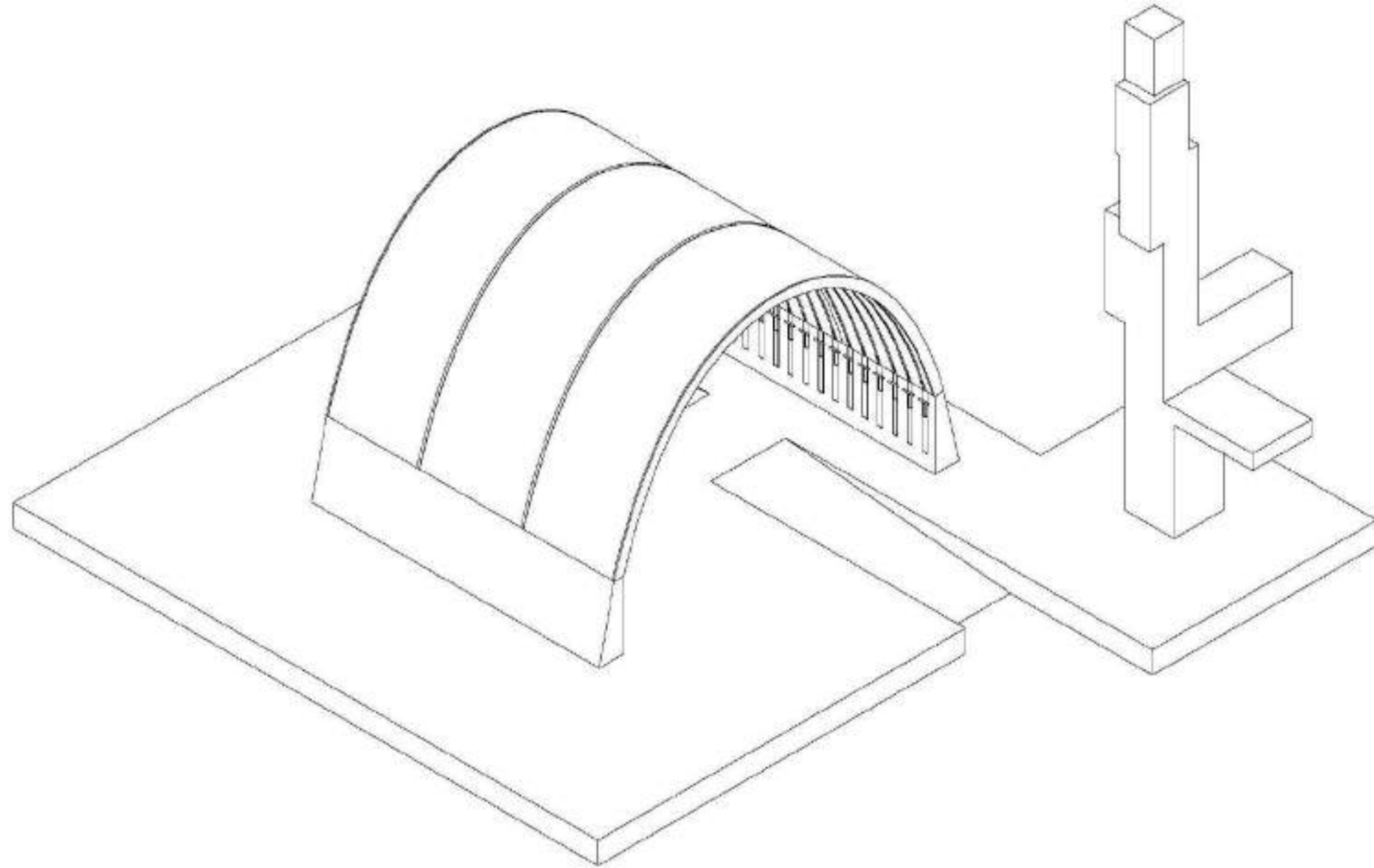
# ENERGY

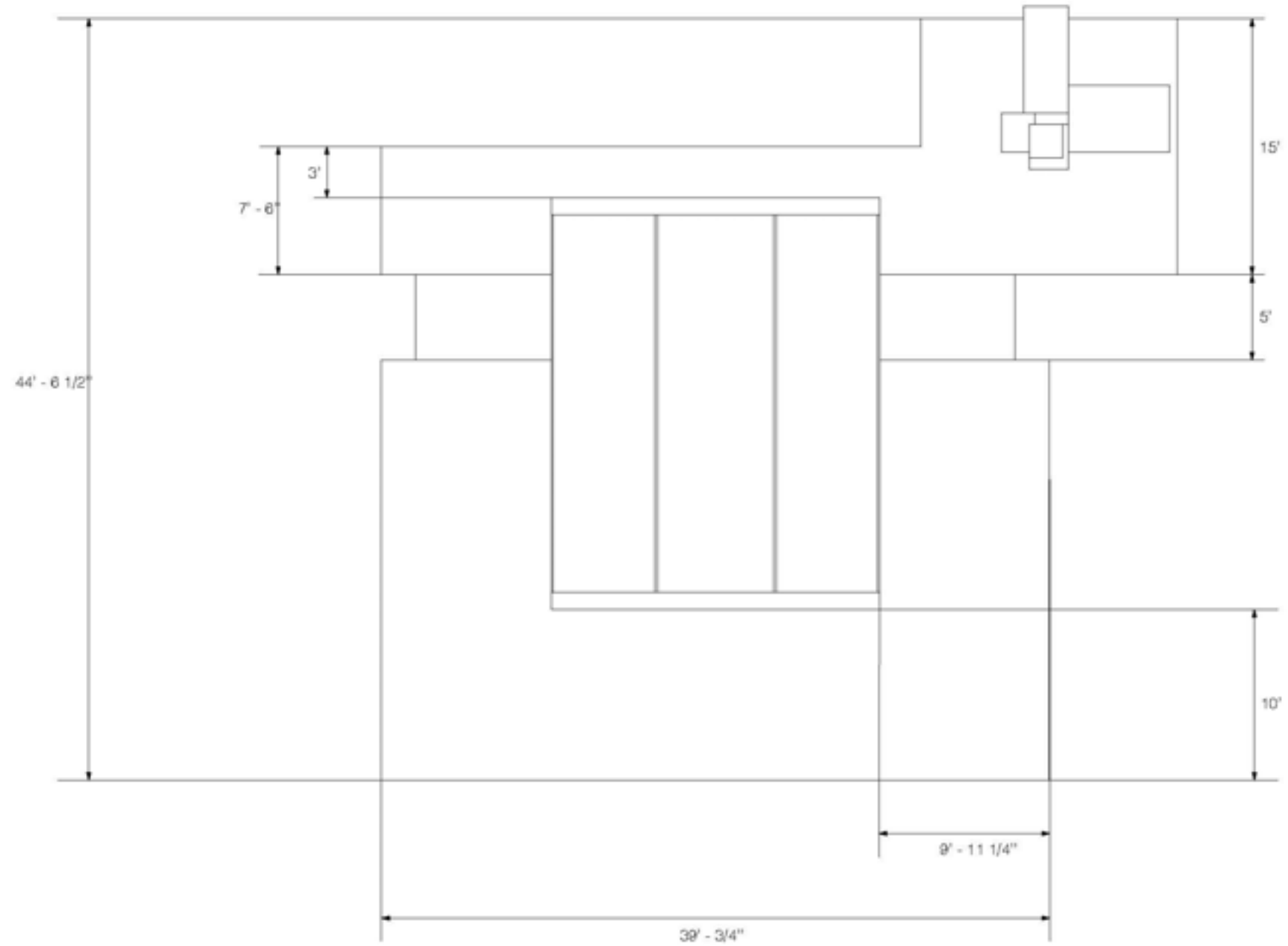
Energy is ever-shifting, moving, and exchanging. It changes levels, from high to low and low to high. I wanted to embody this in my project with the chaotic, high-energy interactive element and the contemplative and rejuvenating atmosphere. On the edges of arch, high-energy visitors are able to spend that energy, stomping around to see their energy transferred directly into the flying balls, to create a visual spectacle. Yet without physical divisions, in the middle, surrounded by all the chaos and the high roof encourages visitors to look up. As they see colorful red balls fly above their head, engulfed in the soft light that filters through the translucent walls, visitors can sit with themselves, center themselves, and recoup energy. The energy spent by some are gained by others, and the cycle continues.

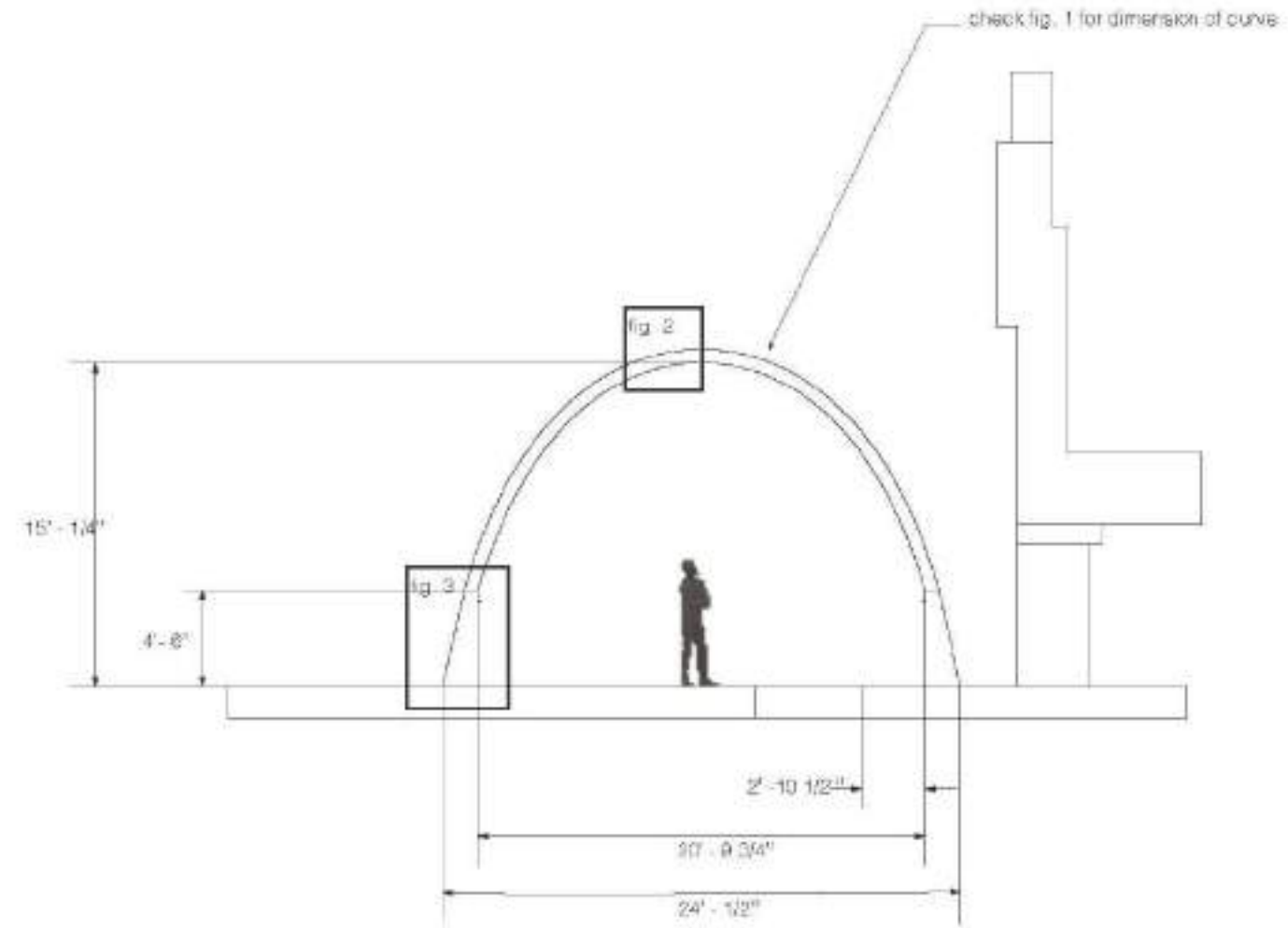
“...the basic stuff of the universe, at its core, is looking like a kind of pure energy that is malleable to human intention and expectation in a way that defies our old mechanistic model of the universe--as though our expectation itself causes our energy to flow out into the world and affect other energy systems.”

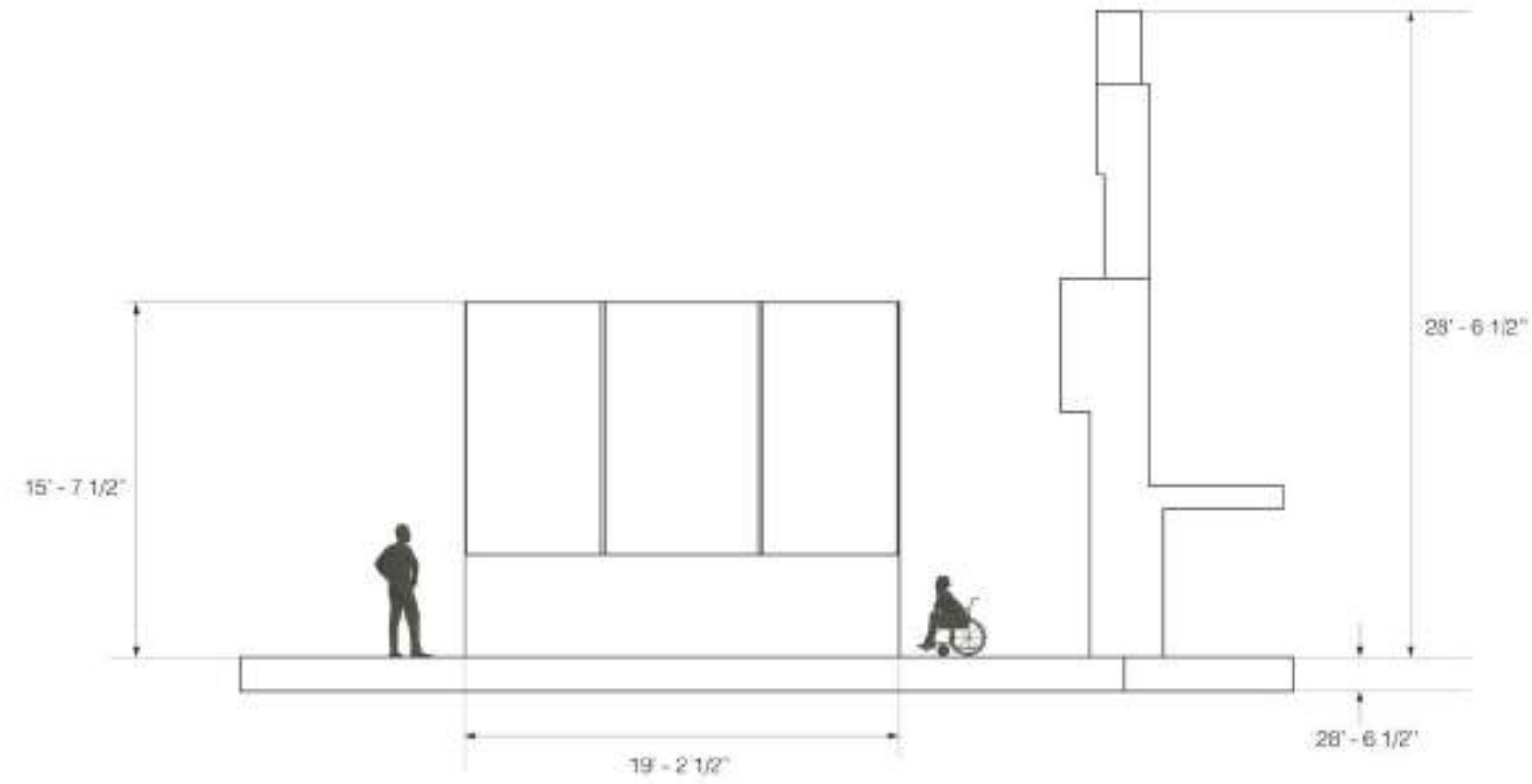
— James Redfield, *The Celestine Prophecy*













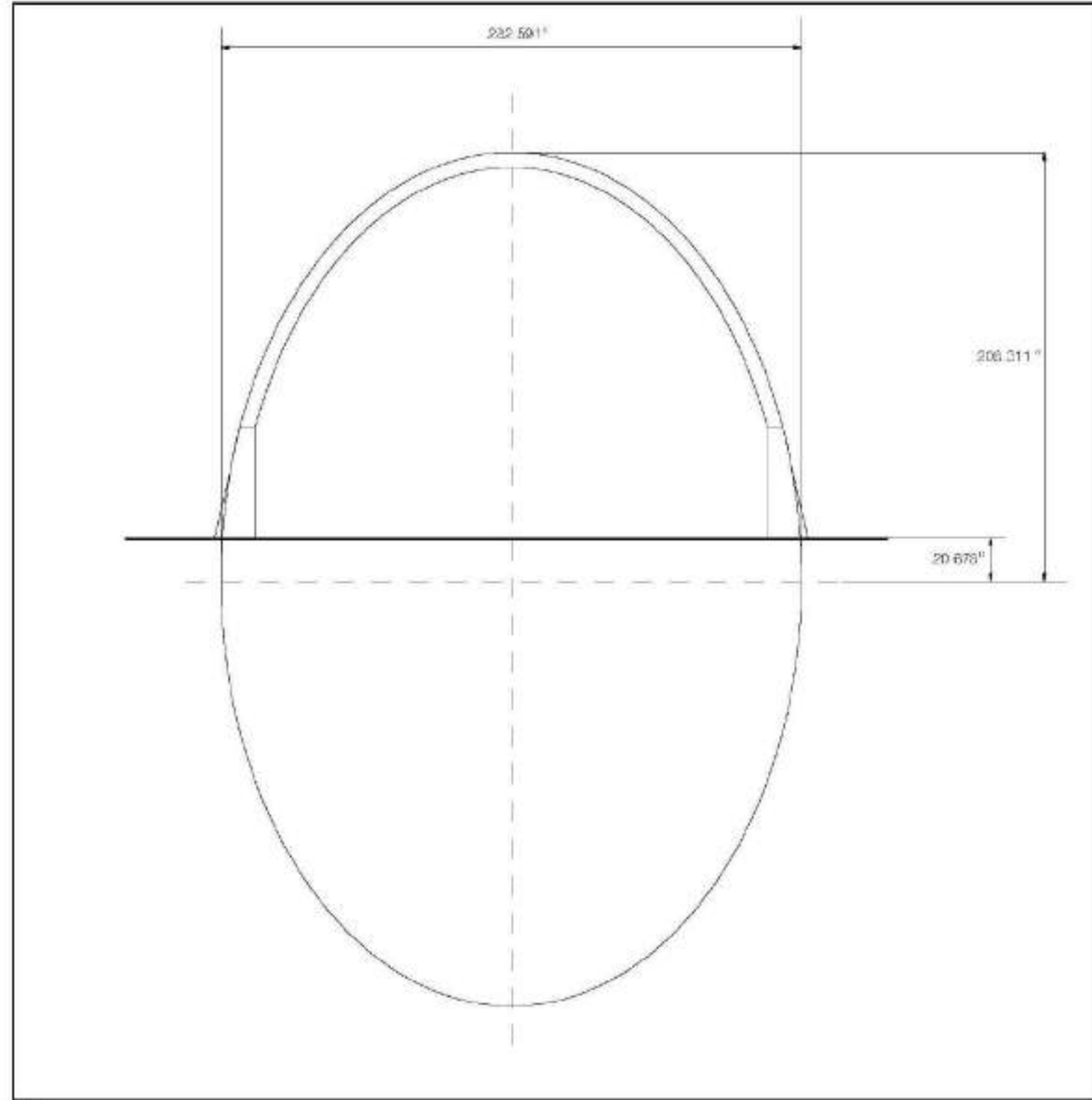


Fig. 1

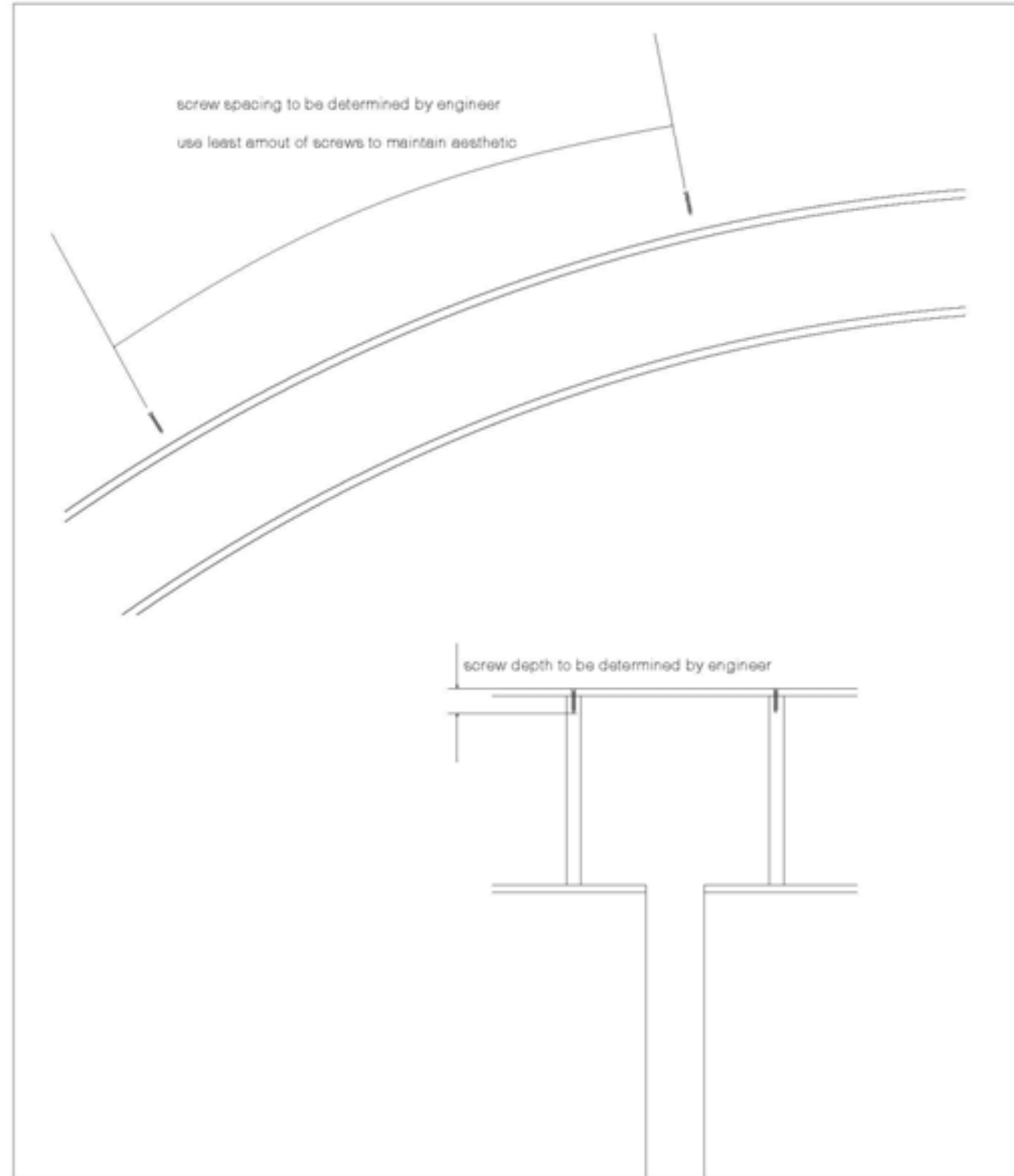


fig. 2

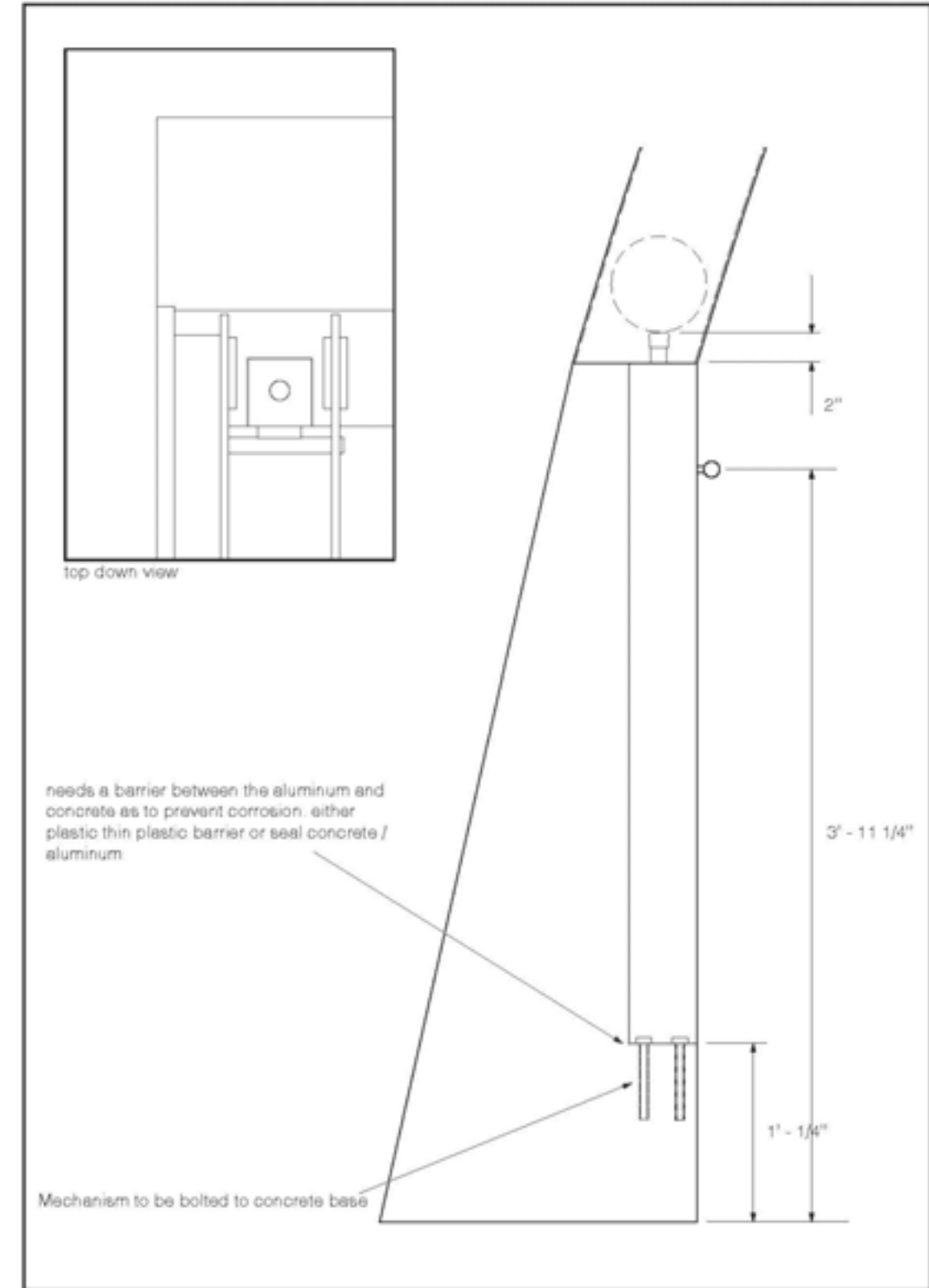
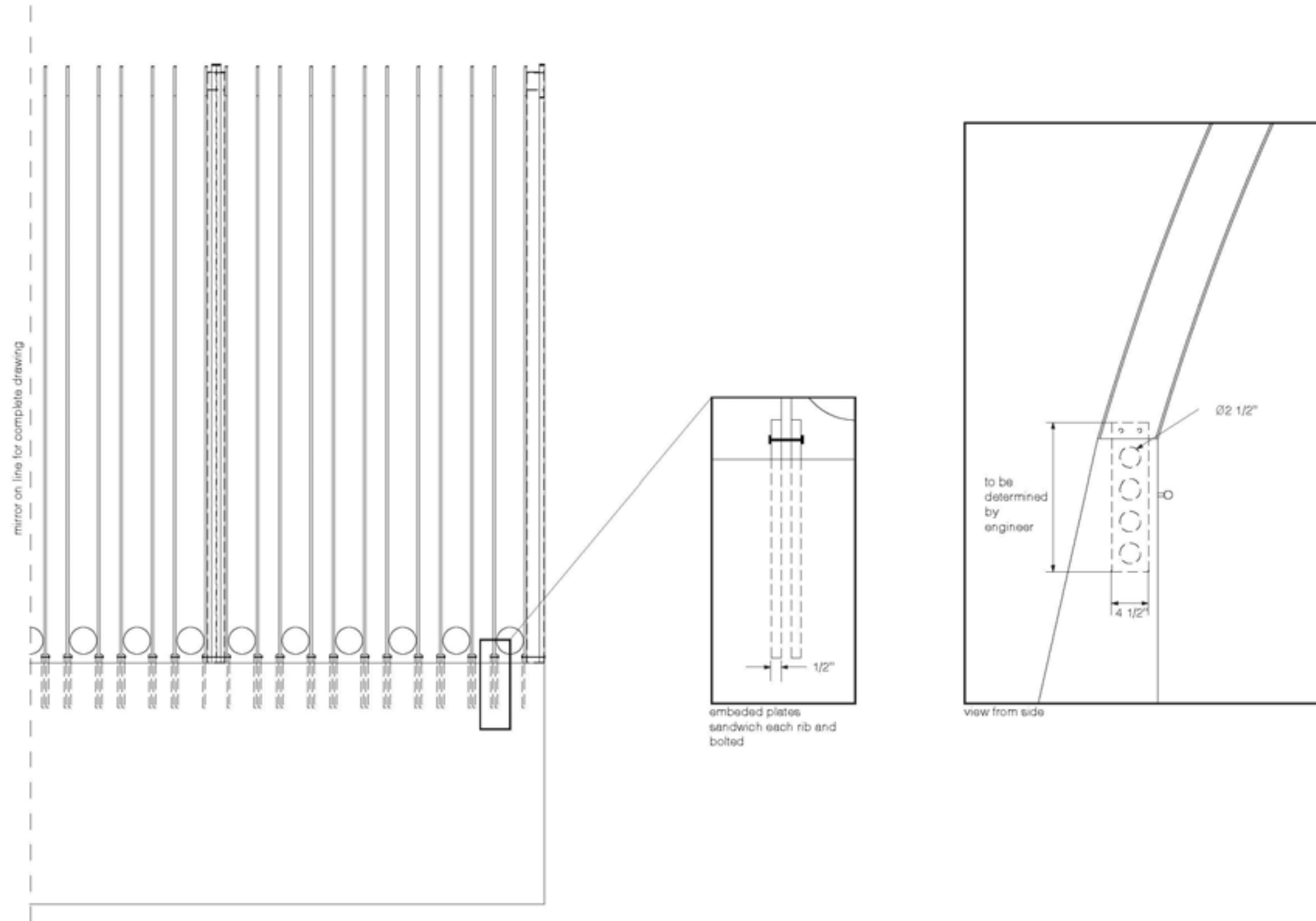
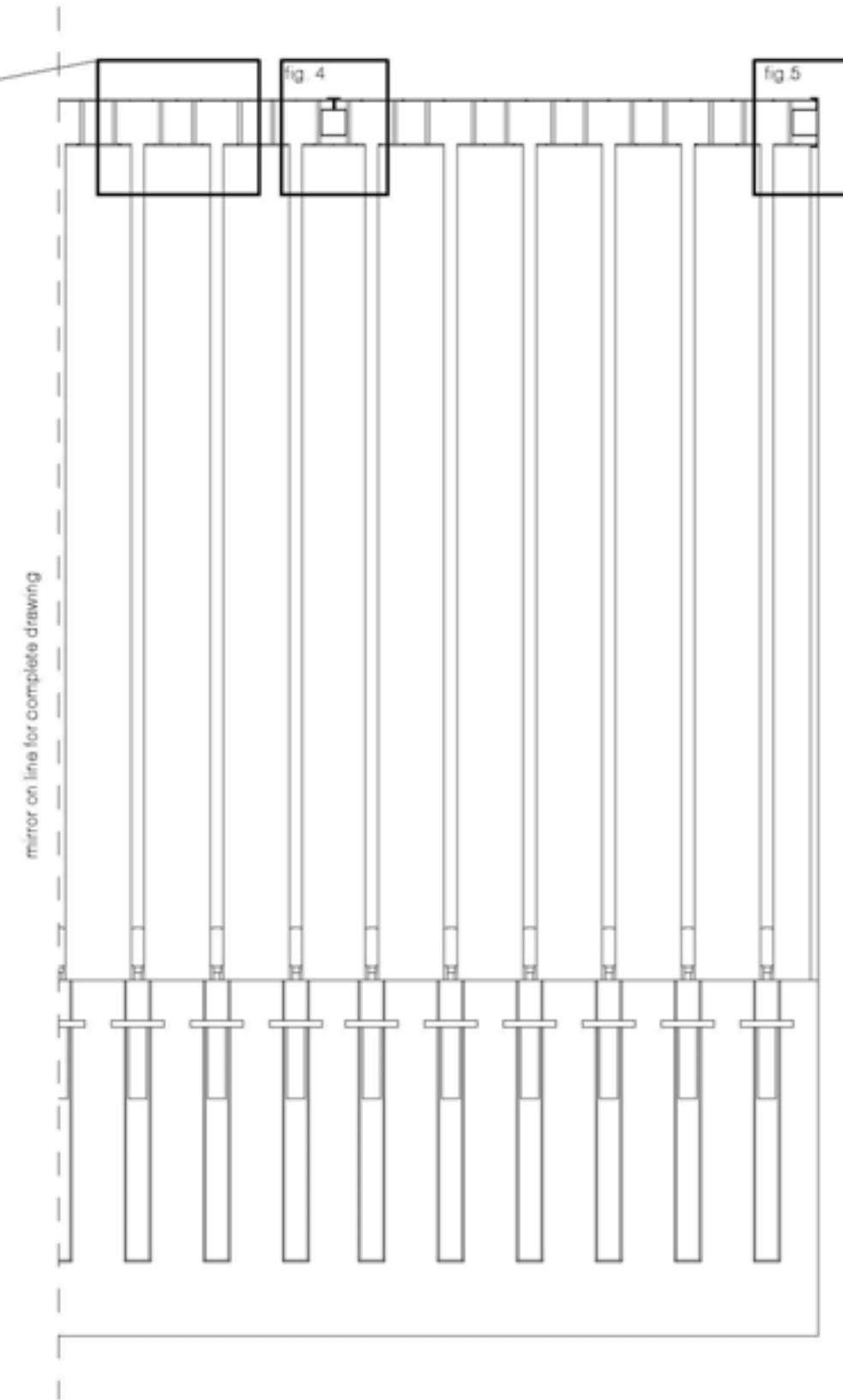
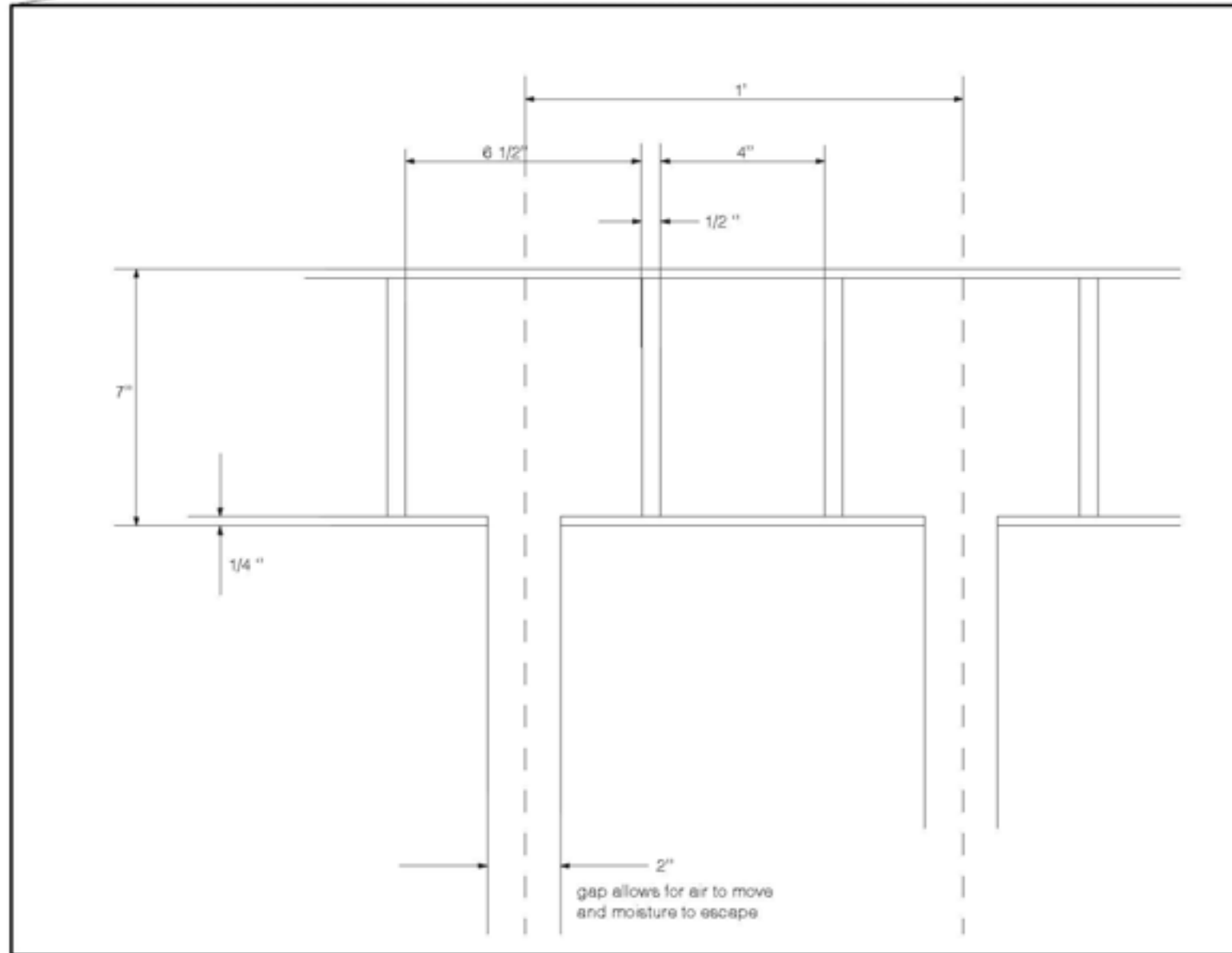
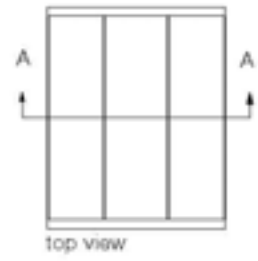


fig. 3





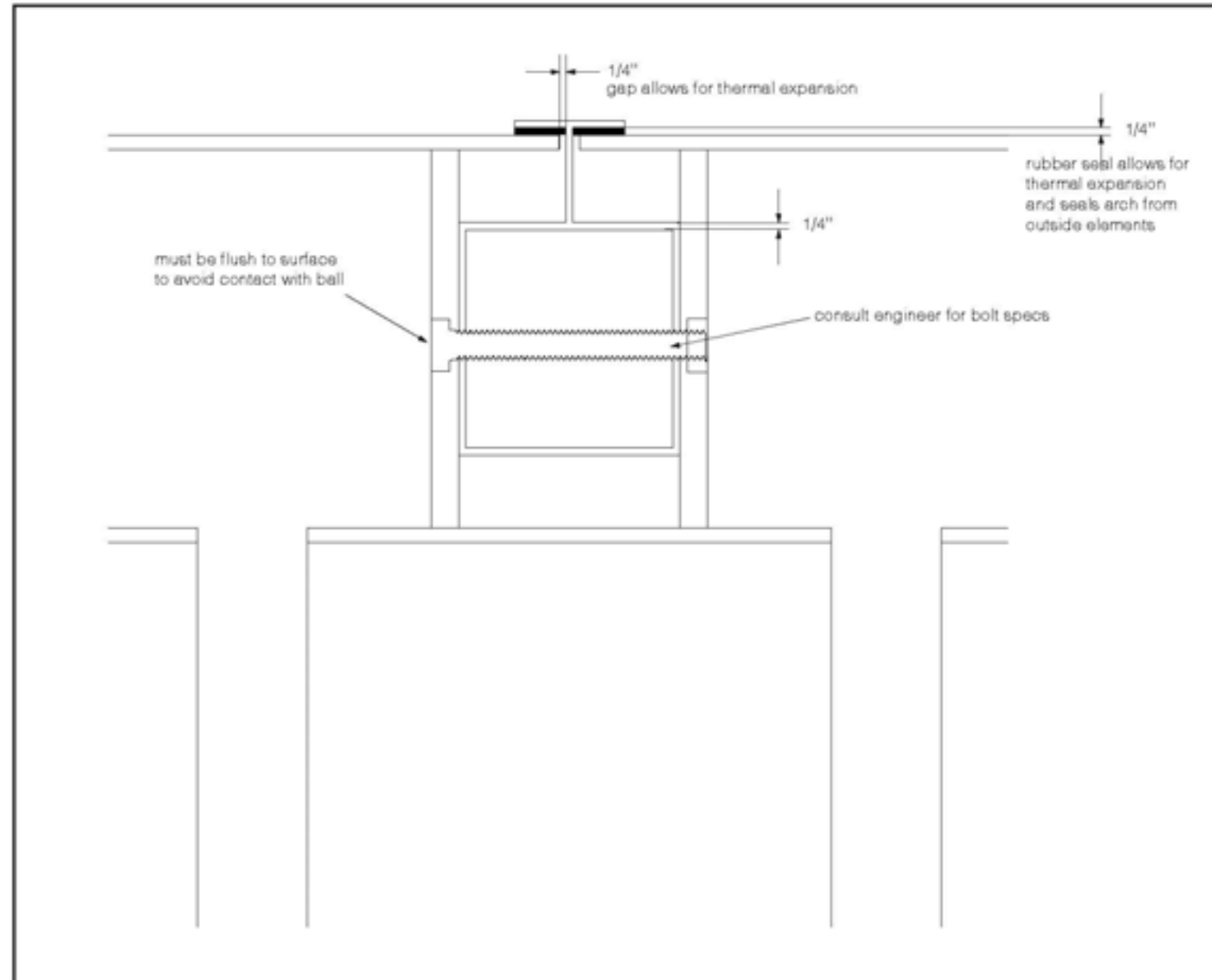


fig. 4

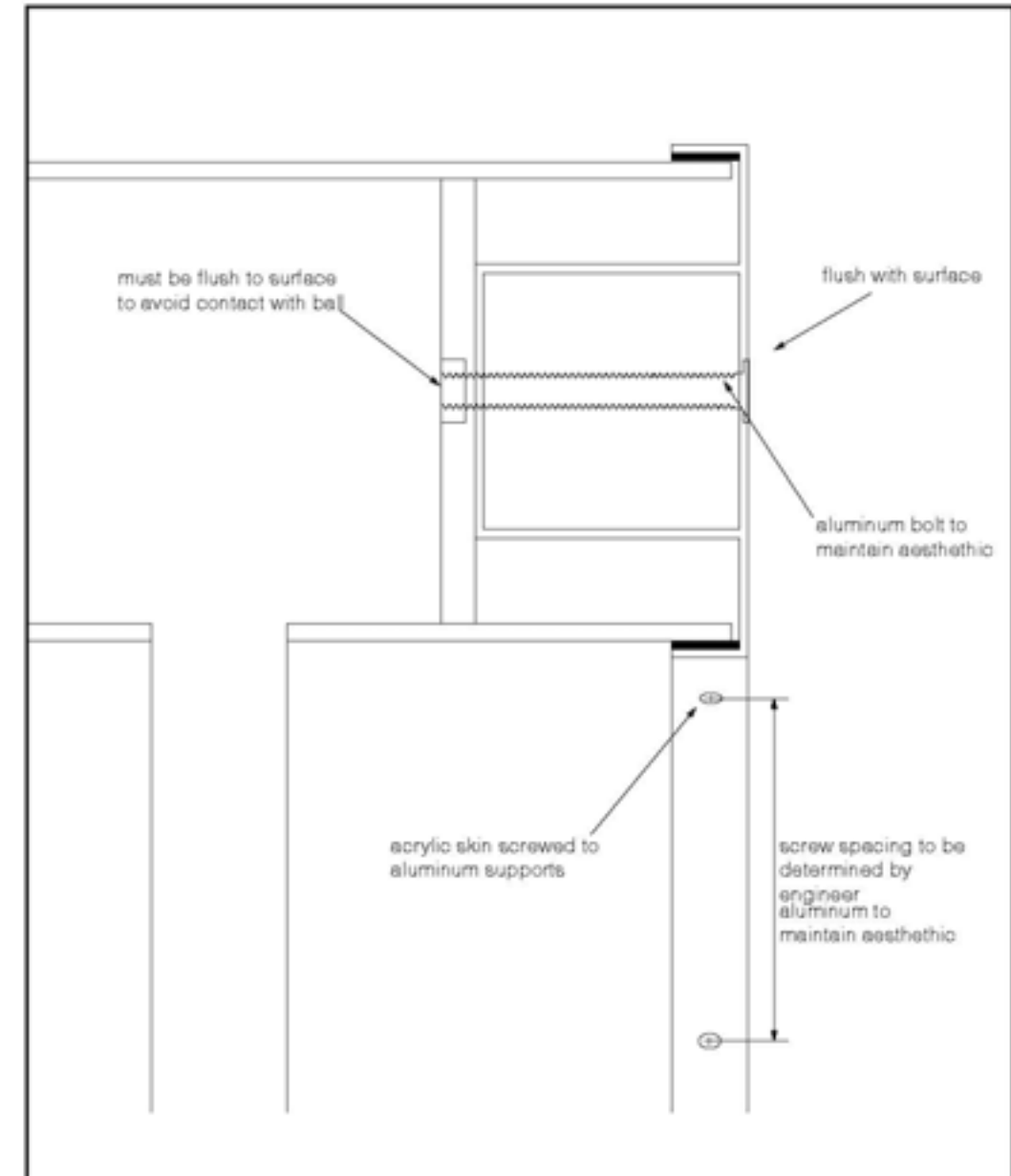
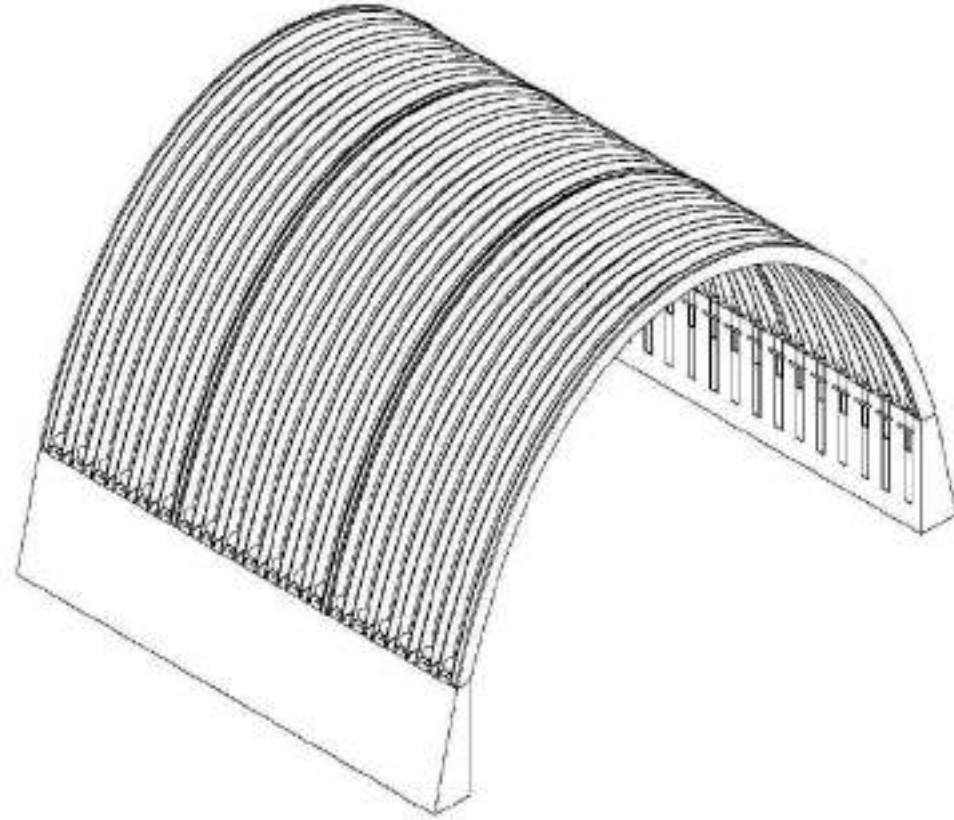
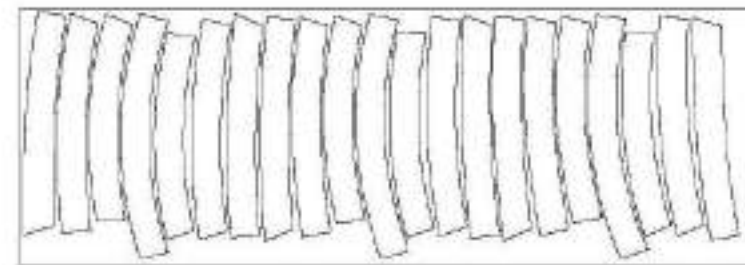
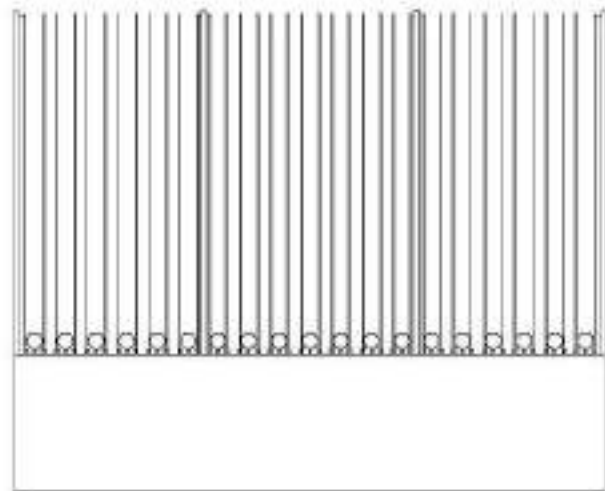
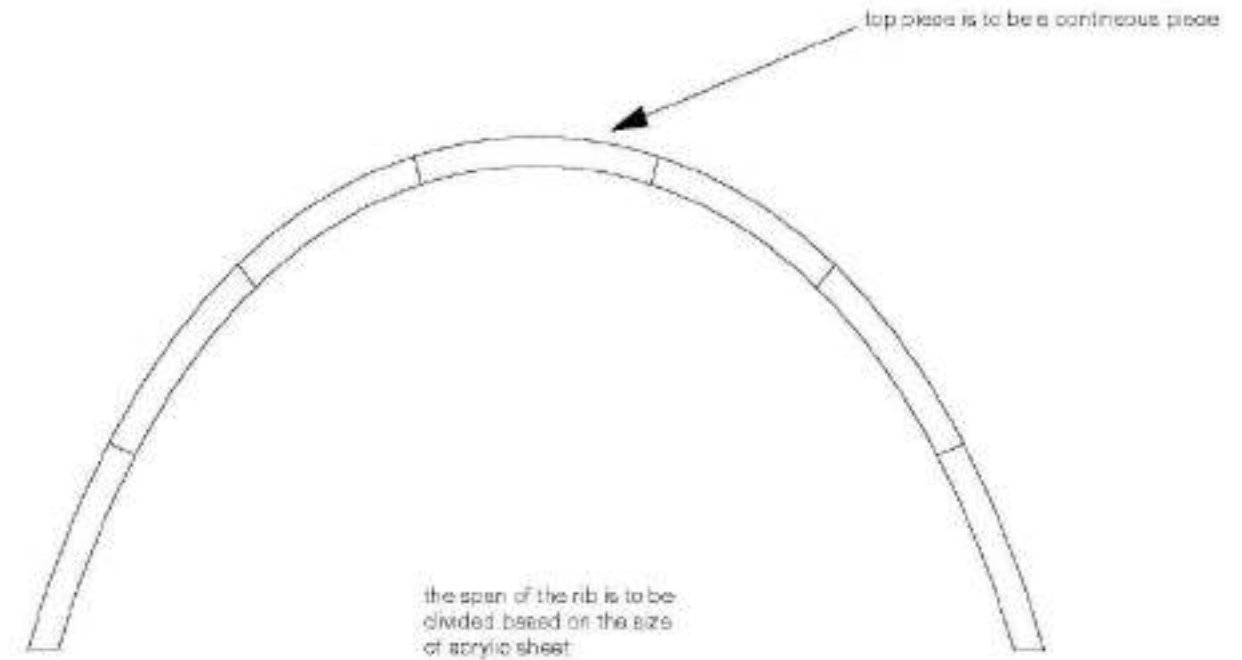


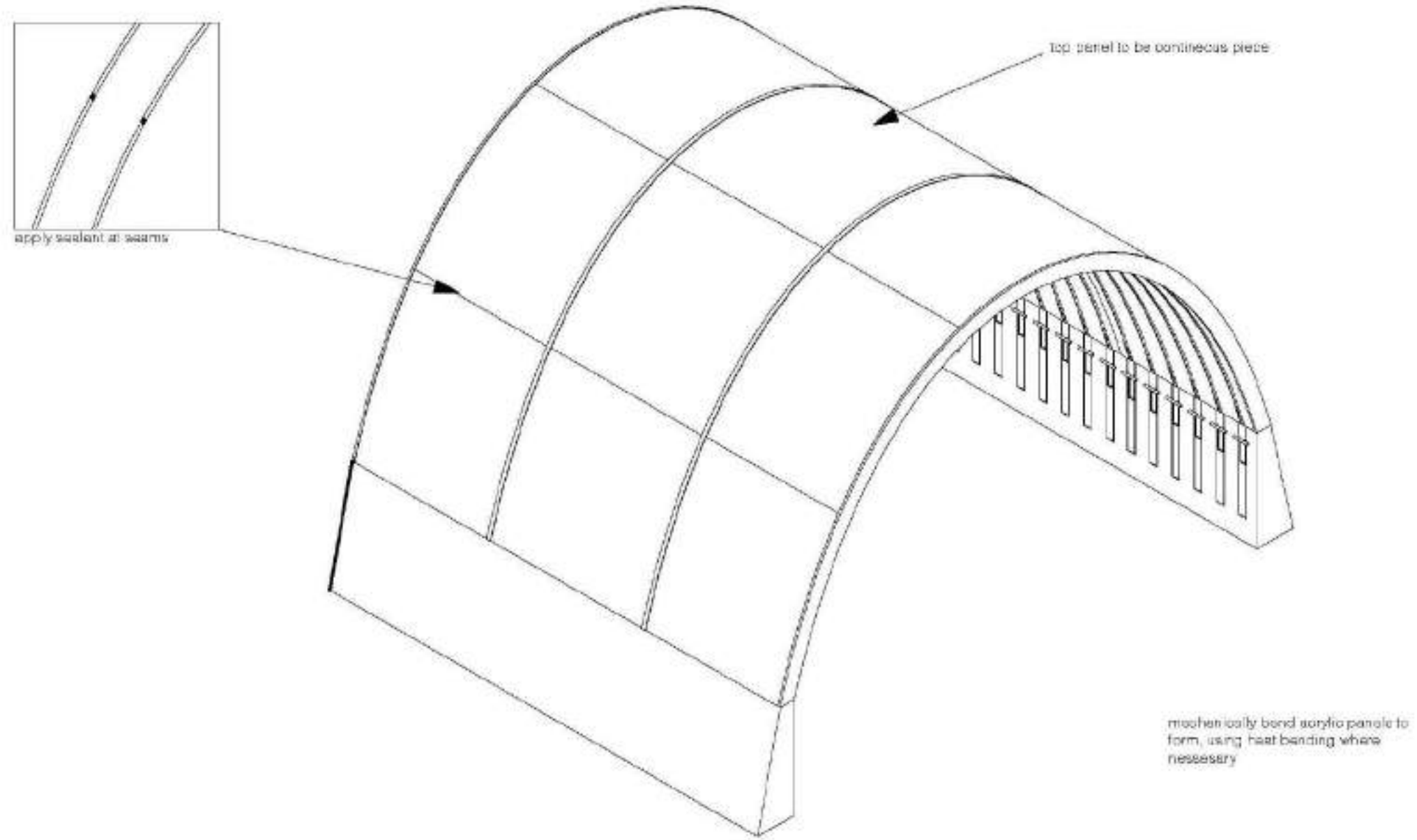
fig. 5

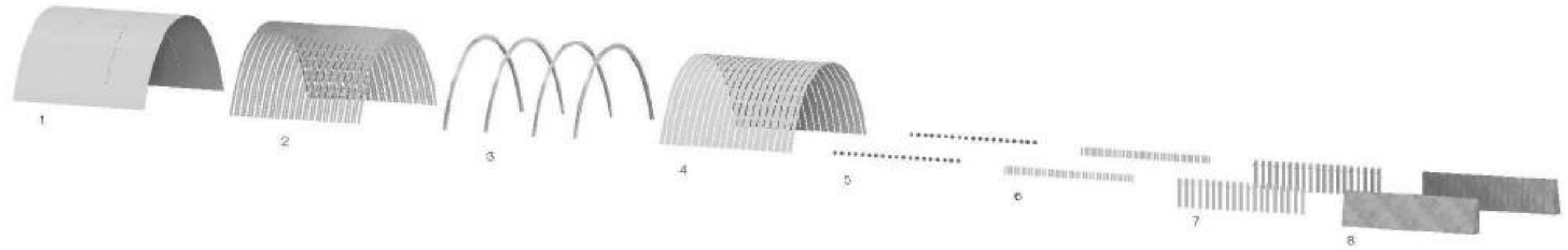


ribs make up the main structure supporting the outer panels



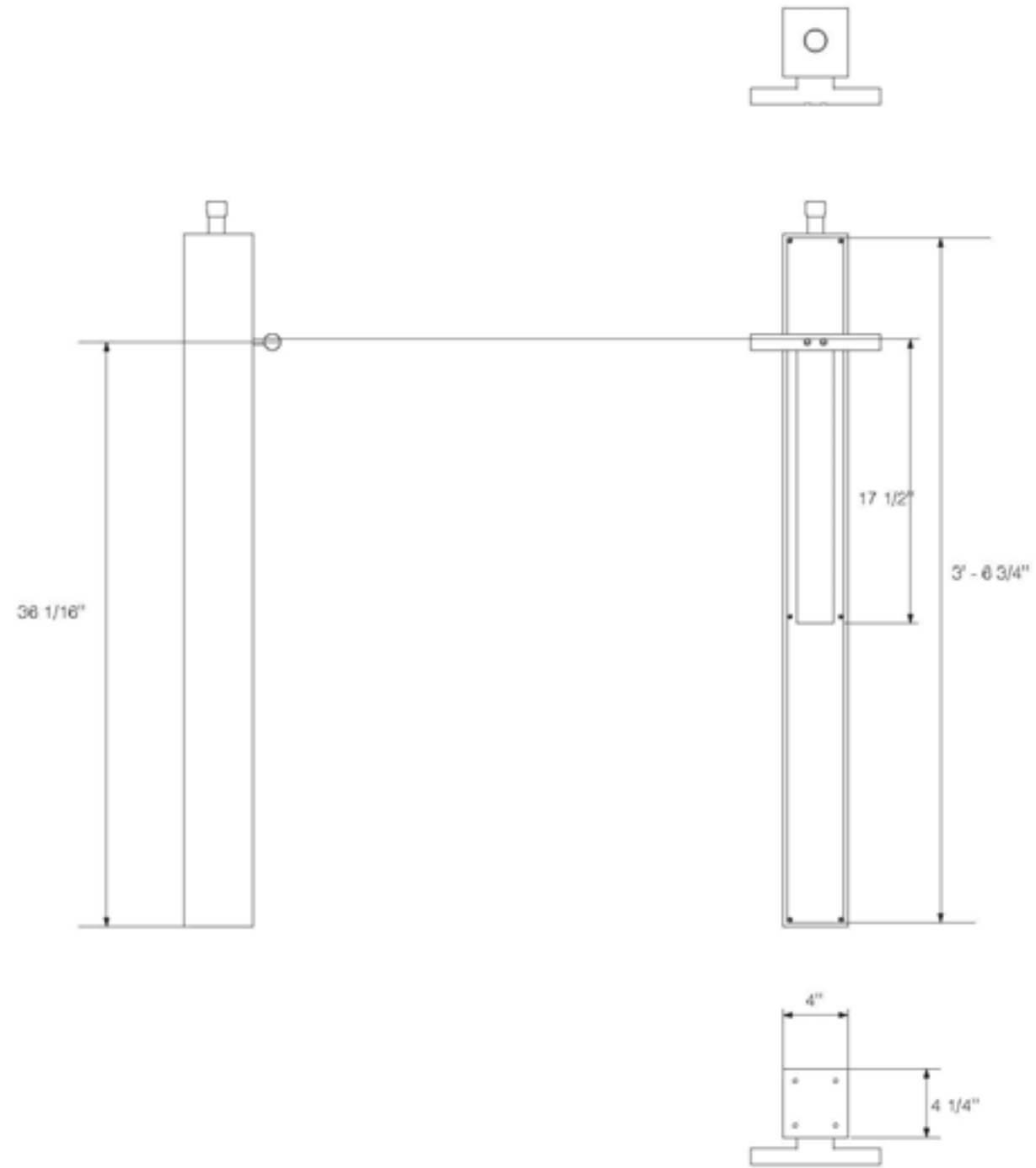
rib sections will be laser cut out of flat sheets and plastic welded at the ends to form the full size structure

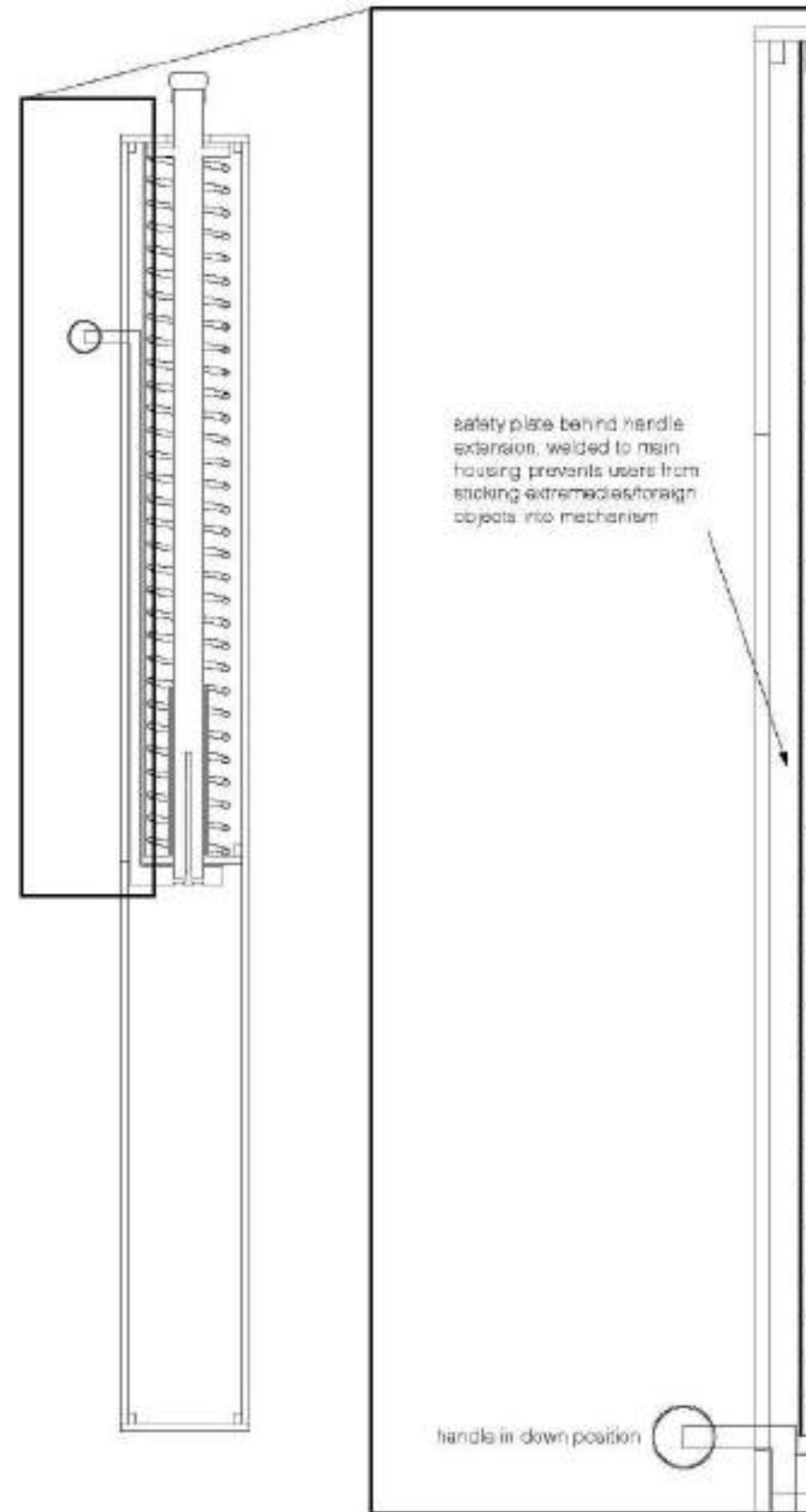
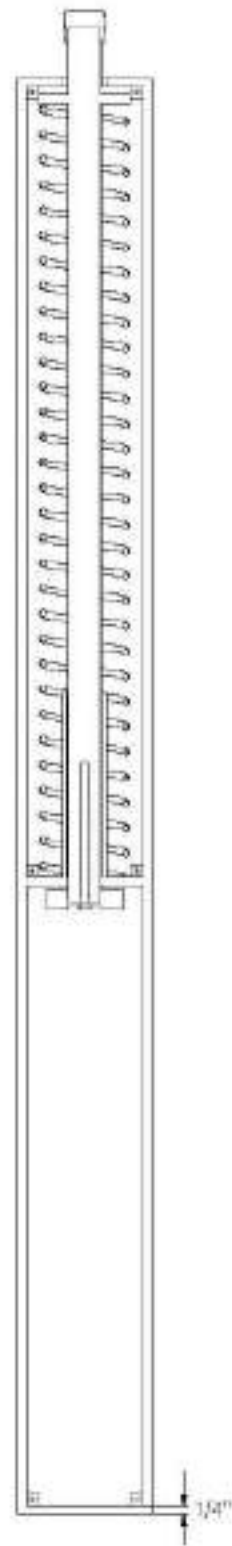
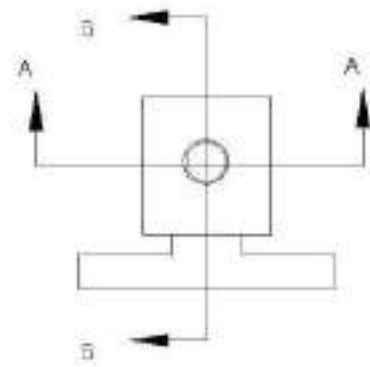




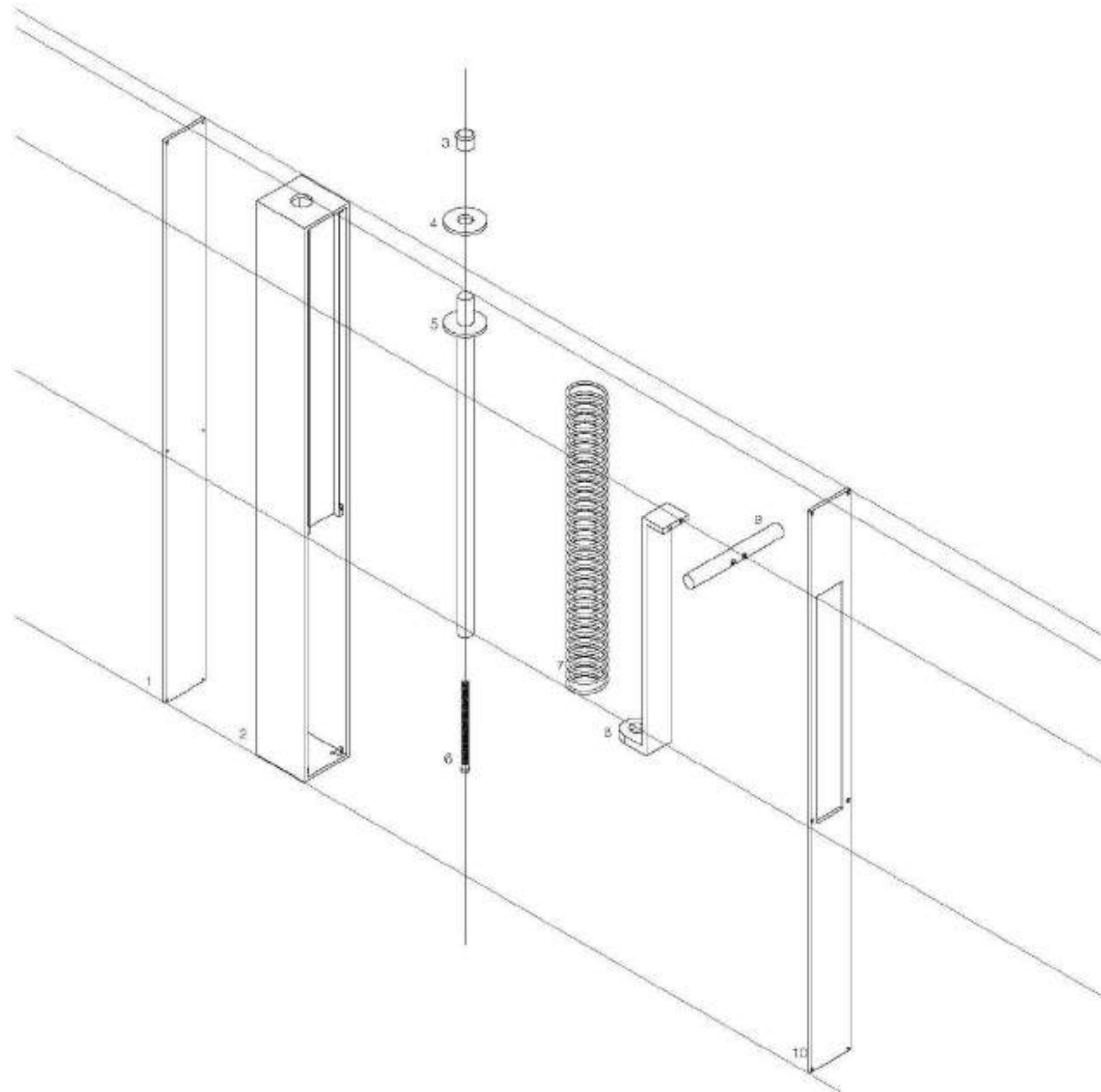
	Materials	Processes	Notes
1	Acrylic Outer Skin	Sandblasted on inner-facing surface / Gloss on outside surface	Outside gloss surface allows for periodic polishing to rid small scratches and surface imperfections
2	Acrylic Ribs	Cut out of flat panels and plastic welded	As its hidden, it can be normal acrylic sheets to save cost
3	Aluminum Supports	Bent Rectangle tubing welded with flat plates	made from sections similar to acrylic rib construction
4	Acrylic Inner Skin	Sandblasted on inside-facing surface / Gloss on user facing surface	User facing gloss surface allows for periodic polishing to rid small scratches and surface imperfections
5	Hollow Plastic Bolts		Red Color
6	Steel Plates		Corrosion/Rust resistant and embedded in concrete base
7	Aluminum Mechanism	Aluminum housing welded together from flat panels	visible surfaces will be made in aluminum, internal components can be made in steel. Handle will be finished with red rubber for grip
8	Concrete Base	Rebar re-enforced	cast with voids to accommodate the mechanism







NOTE: dimensions will change based on chosen spring, mechanism construction will remain as designed



- 1 Backplate
- 2 Main Housing
- 3 Rubber Tip
- 4 Rubber Dampener
- 5 Rod
- 6 Bolt
- 7 Spring
- 8 Handle Extension
- 9 Rubberized Handle
- 10 Facoplate



**Julius J. Chiavaroli**

RIT Professor  
Department of Architecture



**Scott Wolcott**

RIT Professor  
Department of Civil Engineering Technology,  
Environmental Management and Safety



**John Wellin**

RIT Principal Lecturer  
Department of Mechanical Engineering



**Abdullah al Faruque**

Associate Professor  
Department of Civil Engineering Technology,  
Environmental Management and Safety



**Reza Aliabadi**

Designer in Residence  
Vignelli Center



**Josh Owen**

Vignelli Distinguished Professor of Design  
School of Design