

BALANCE

A Project of Balance

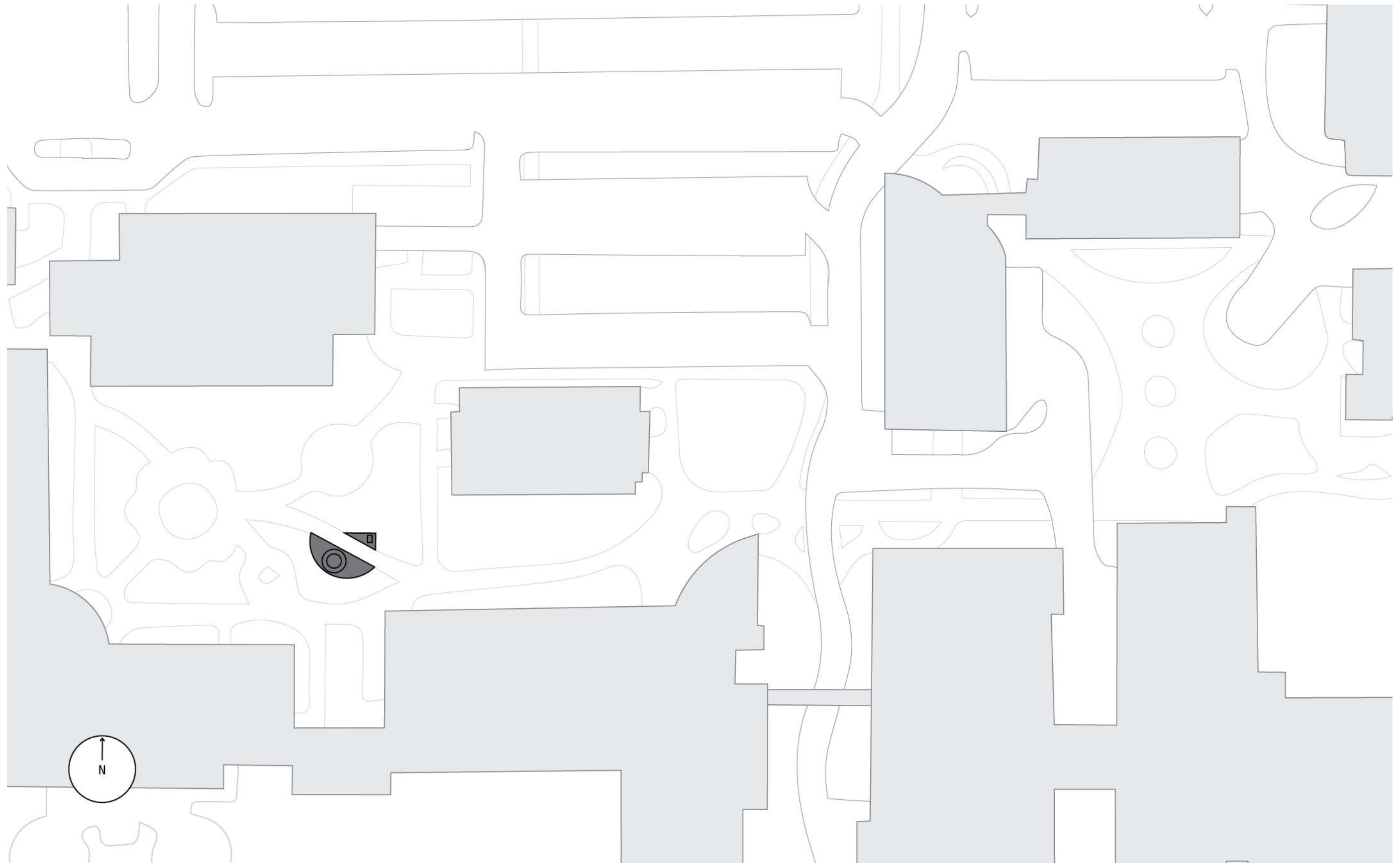
The basic forces of the universe are a push and a pull, but neither can be sustained at an extreme. Eventually, equilibrium is reached. A point of balance lying still at the perfect center in a moment of peace.

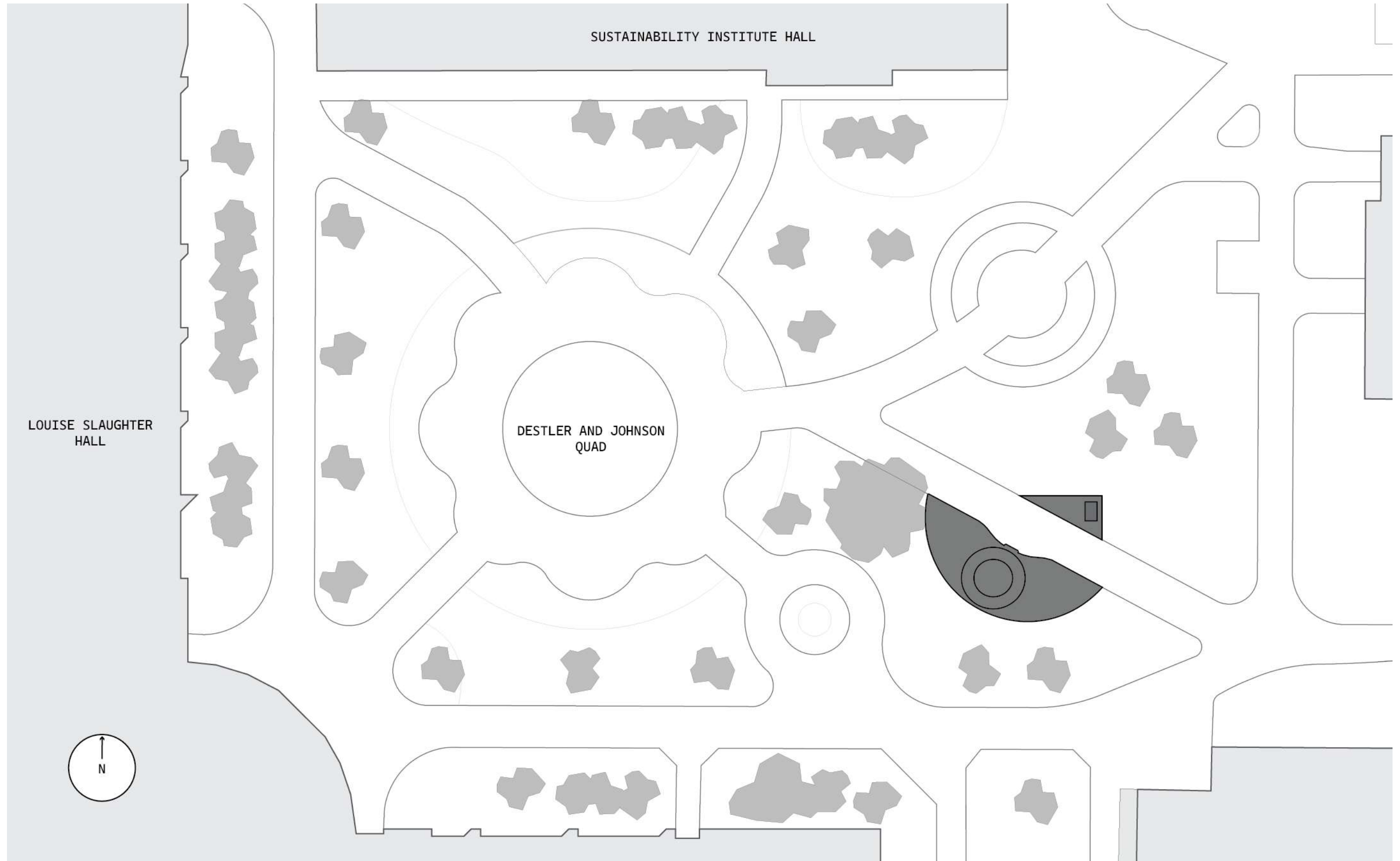
A relationship is established. A scale reveals a disparity or an equality between the weights.

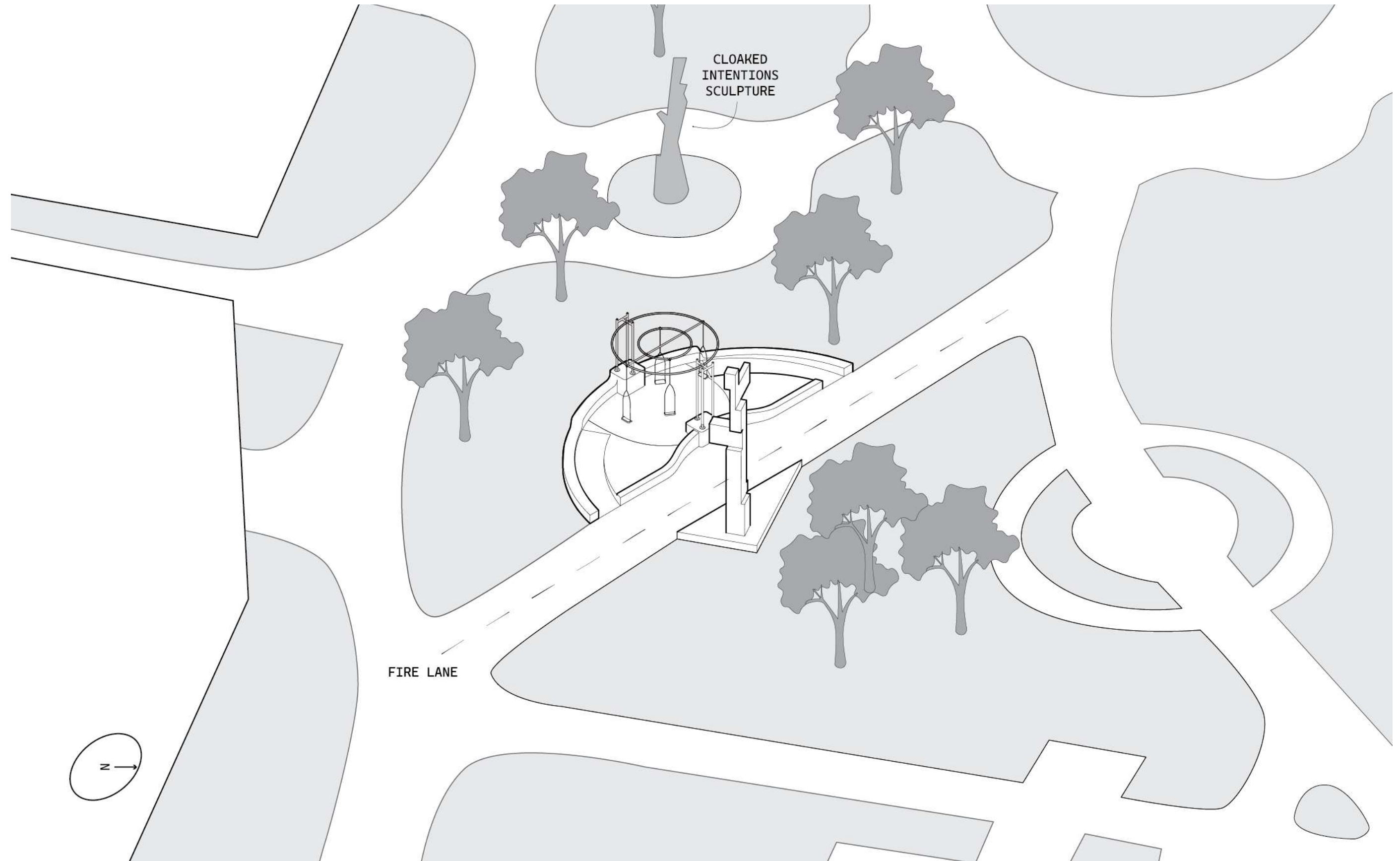
This balance seeks equality, at a human scale. Applying pressure to either pan will move the whole structure, which exists in a state of flux. There is no need for careful measurement or calibration, no desire to relate the human body to a number. Instead, the balance invites several people at once to investigate their relationship with each other, to identify the point of compromise between them, and sit at rest.

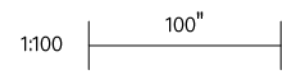
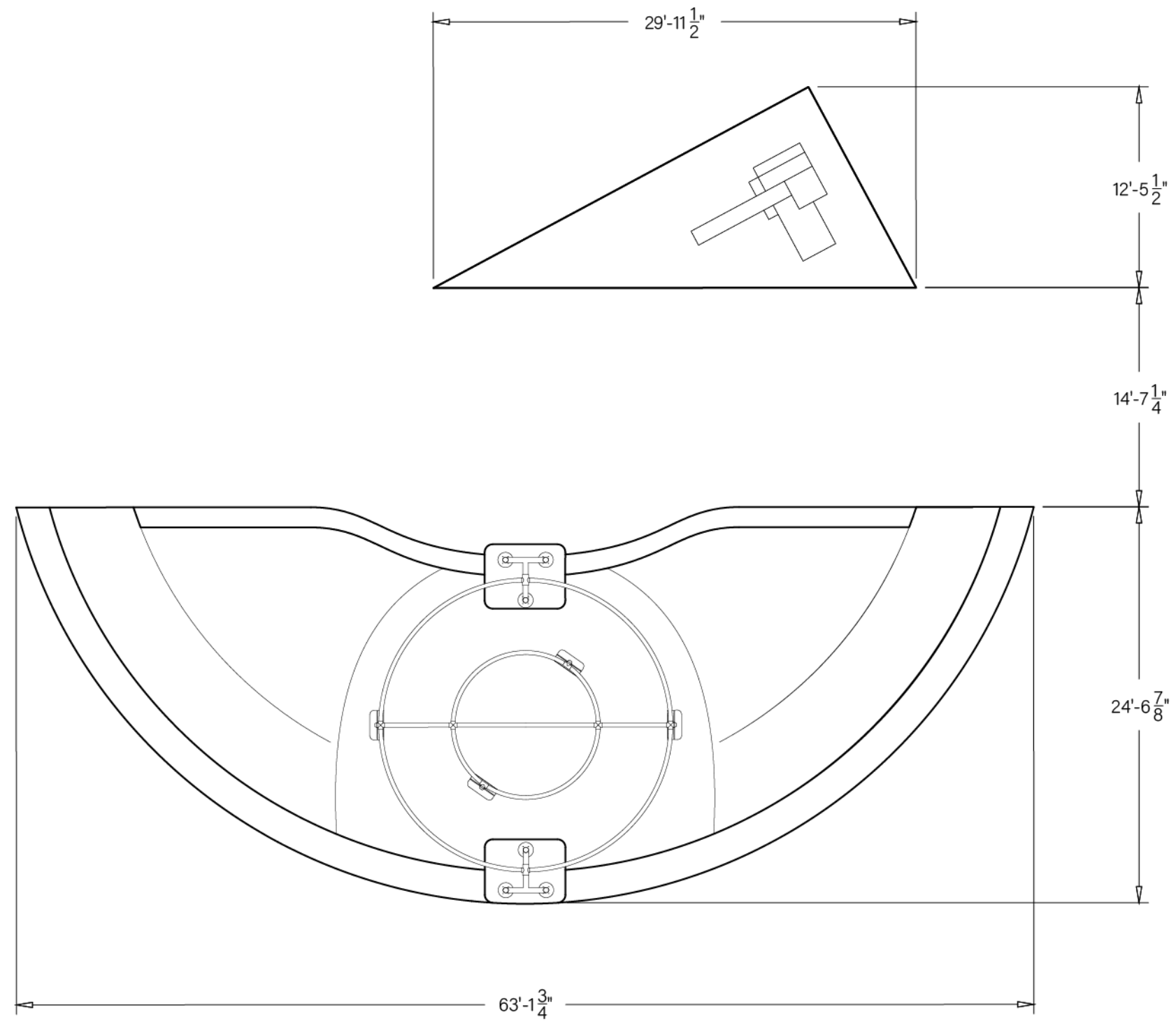
“We want Realism's wealth of experience and Symbolism's depth of feeling. All art is a problem of balance between two opposites.”

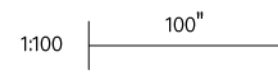
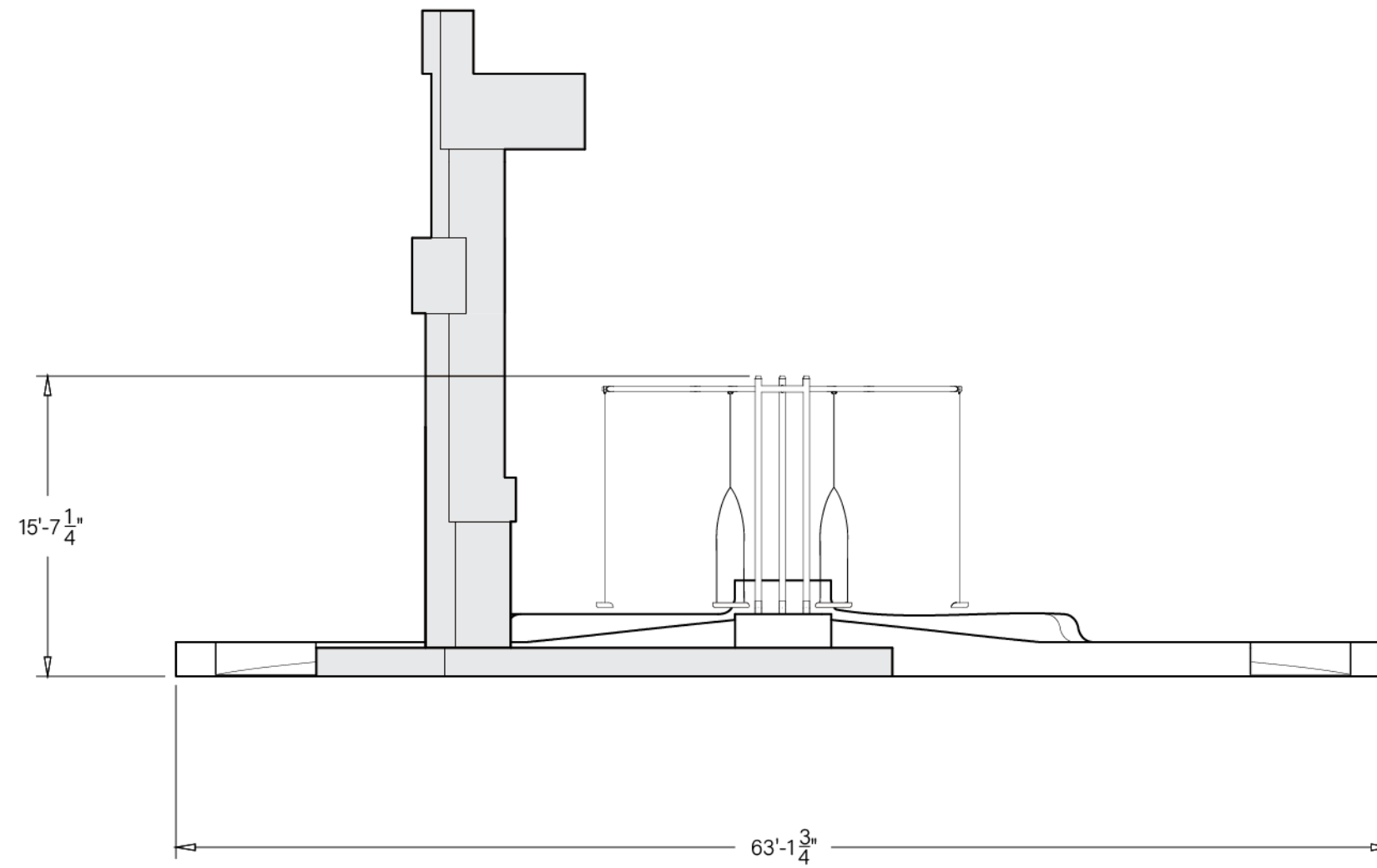
Cesare Pavese

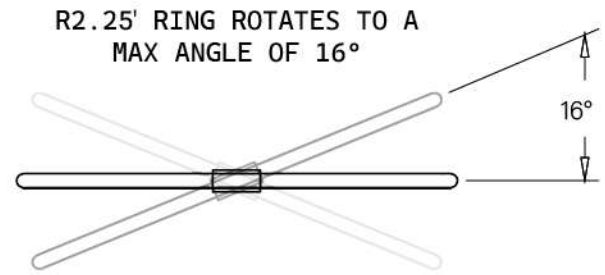
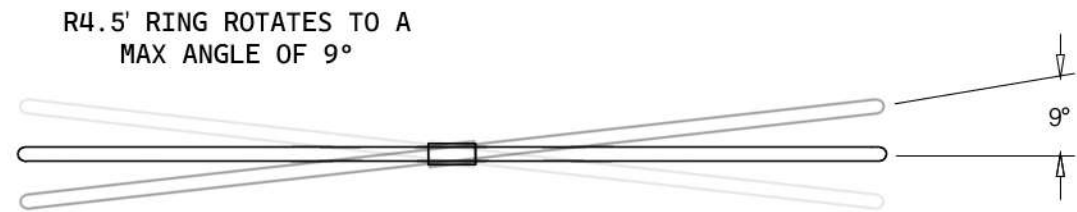




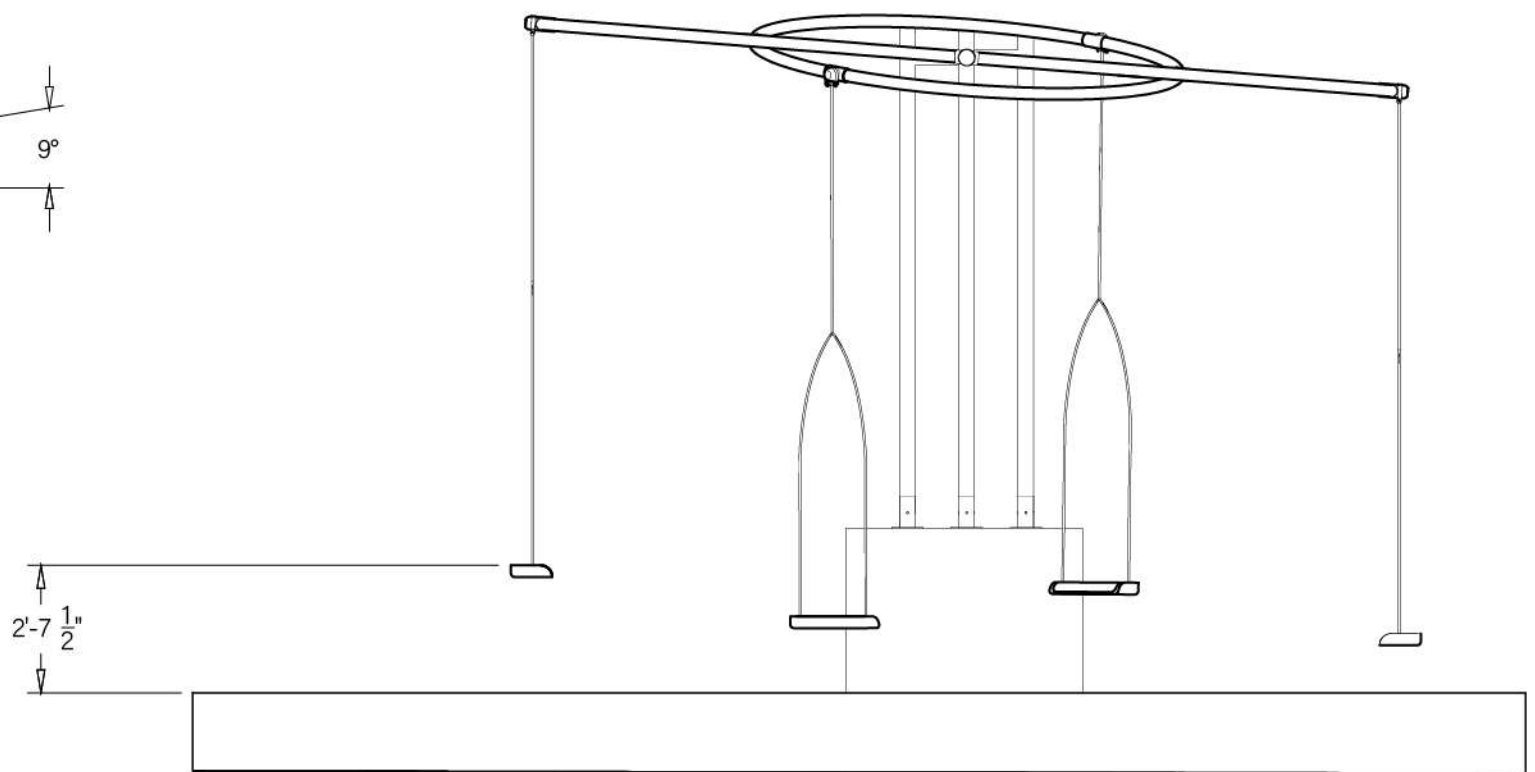




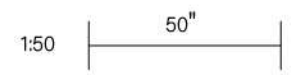
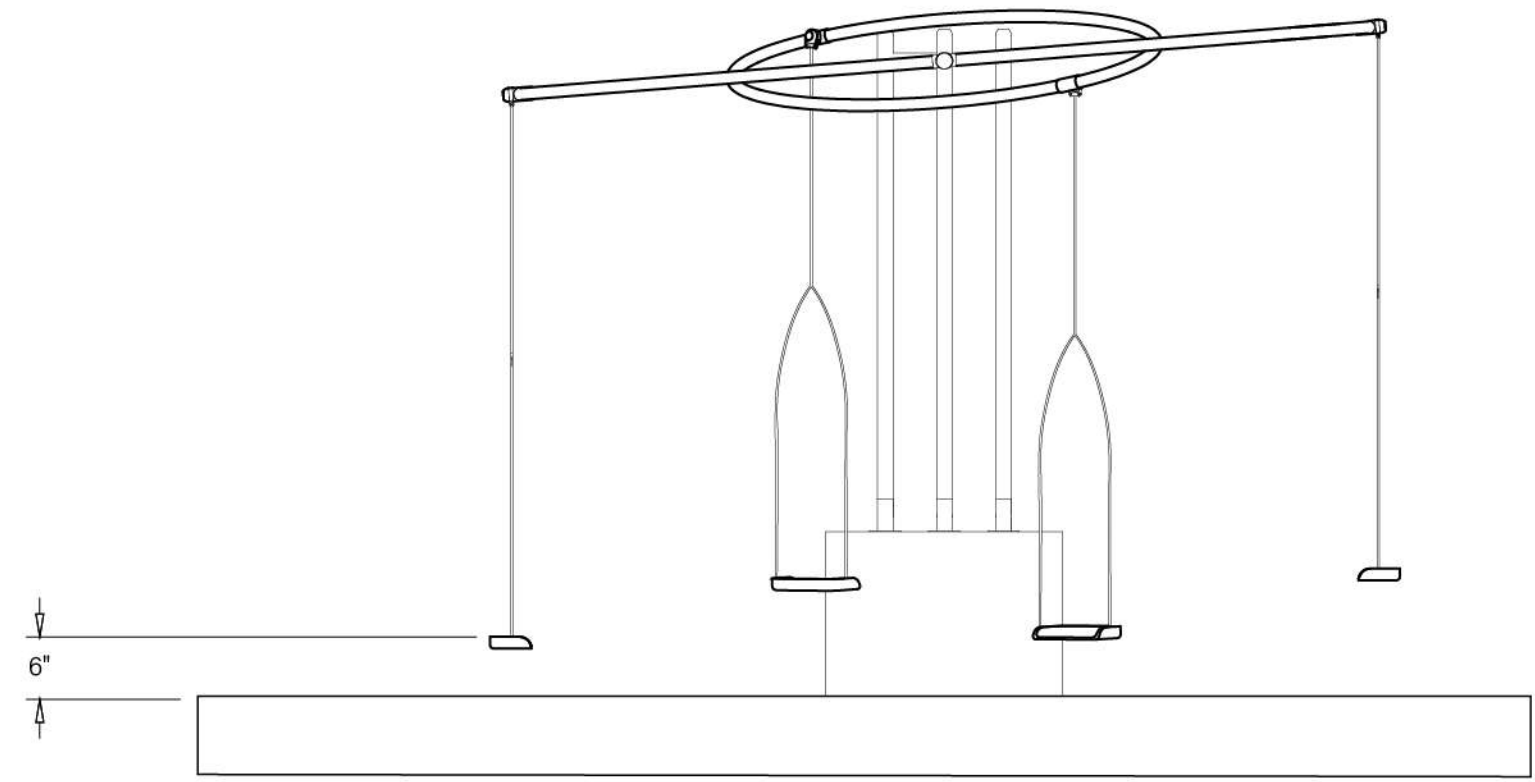


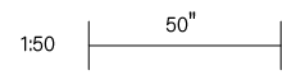
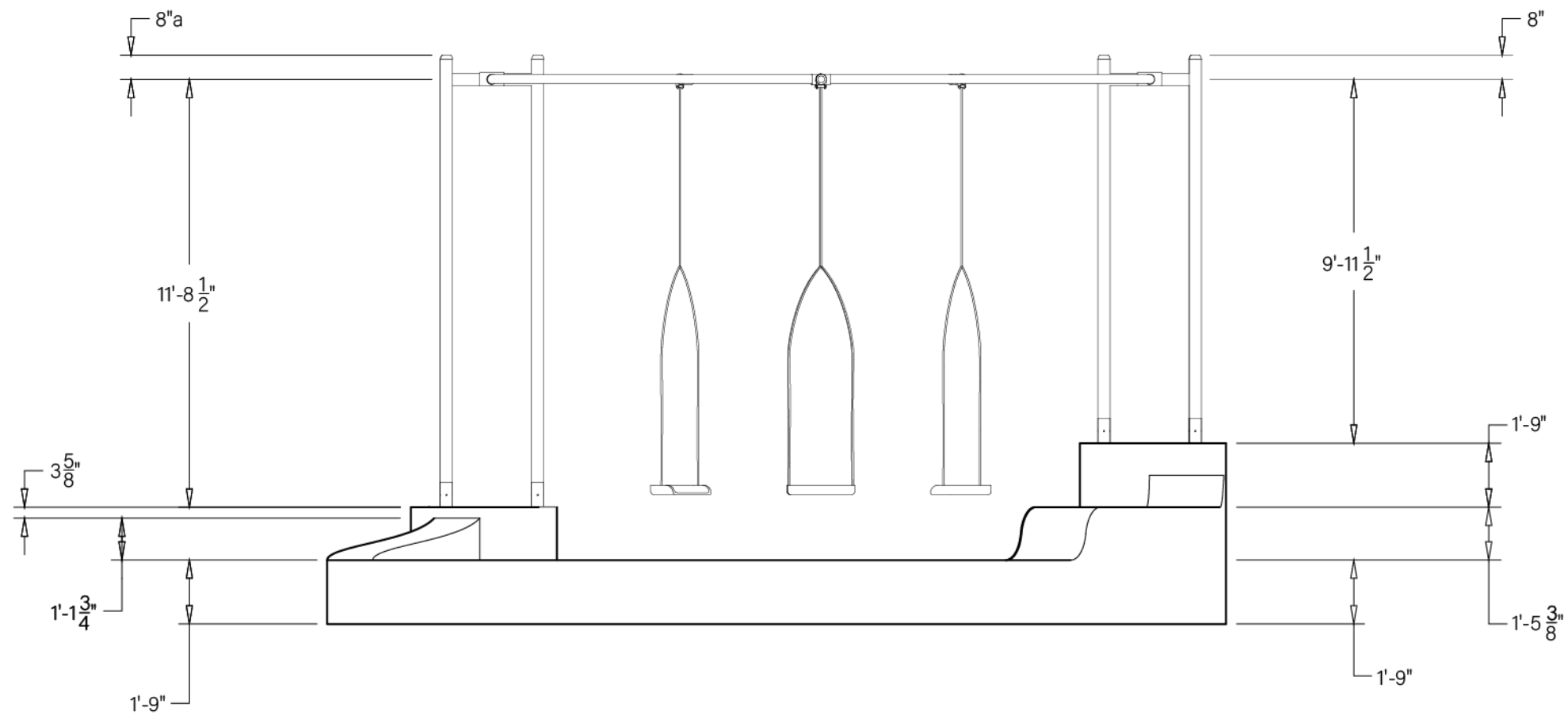


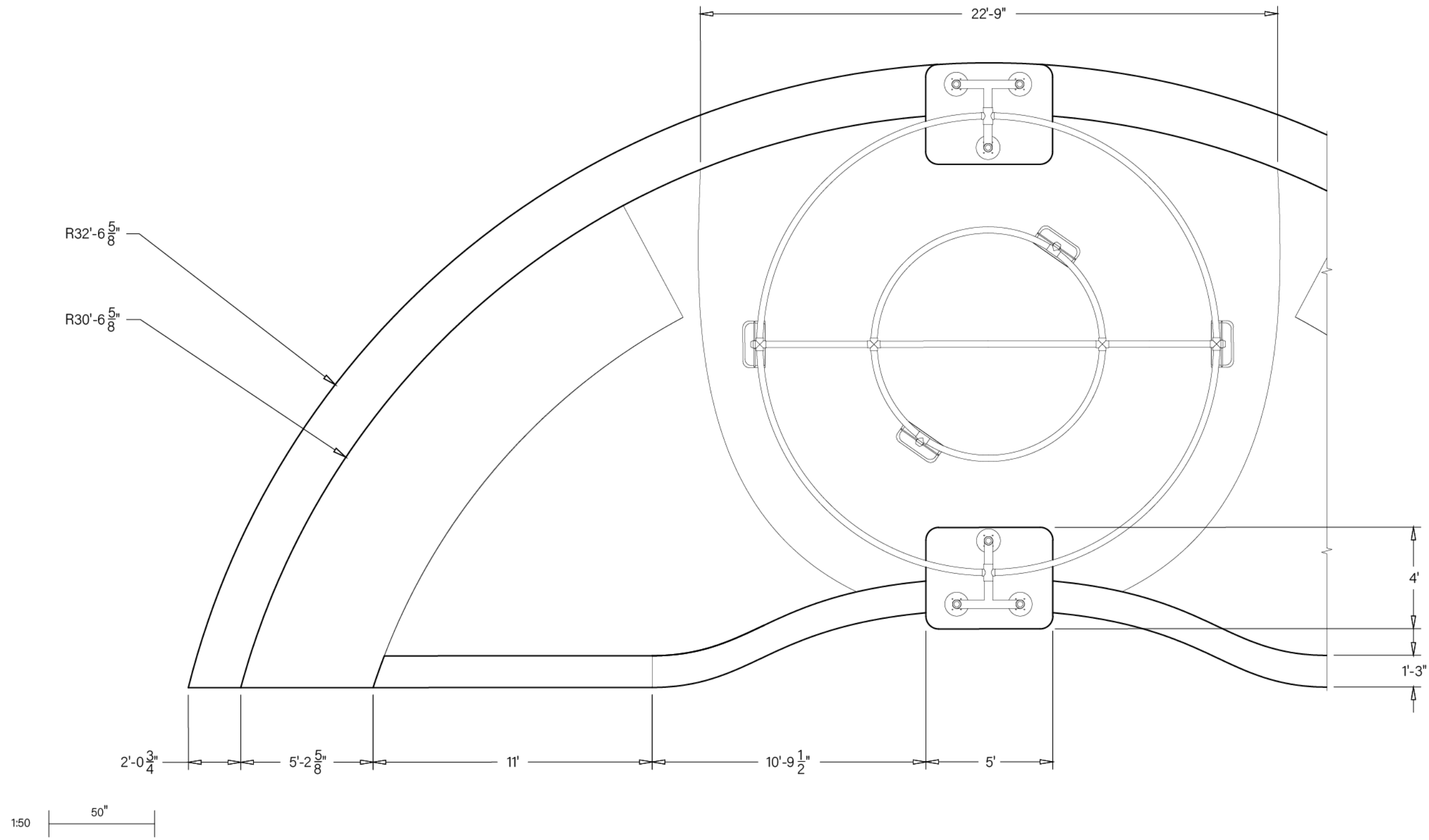
MAX SEAT HEIGHT: 2'-7 1/2"

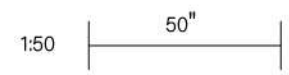
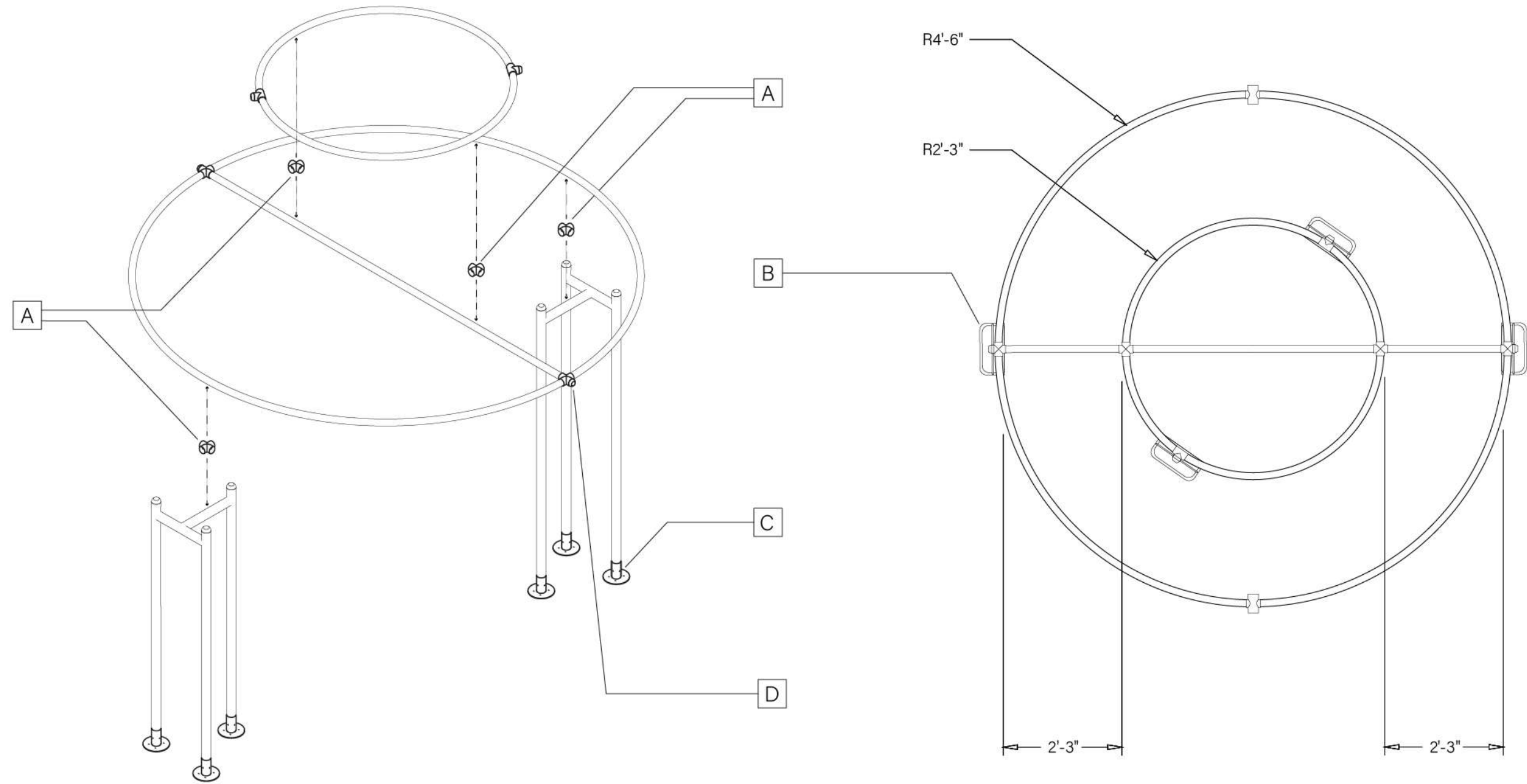


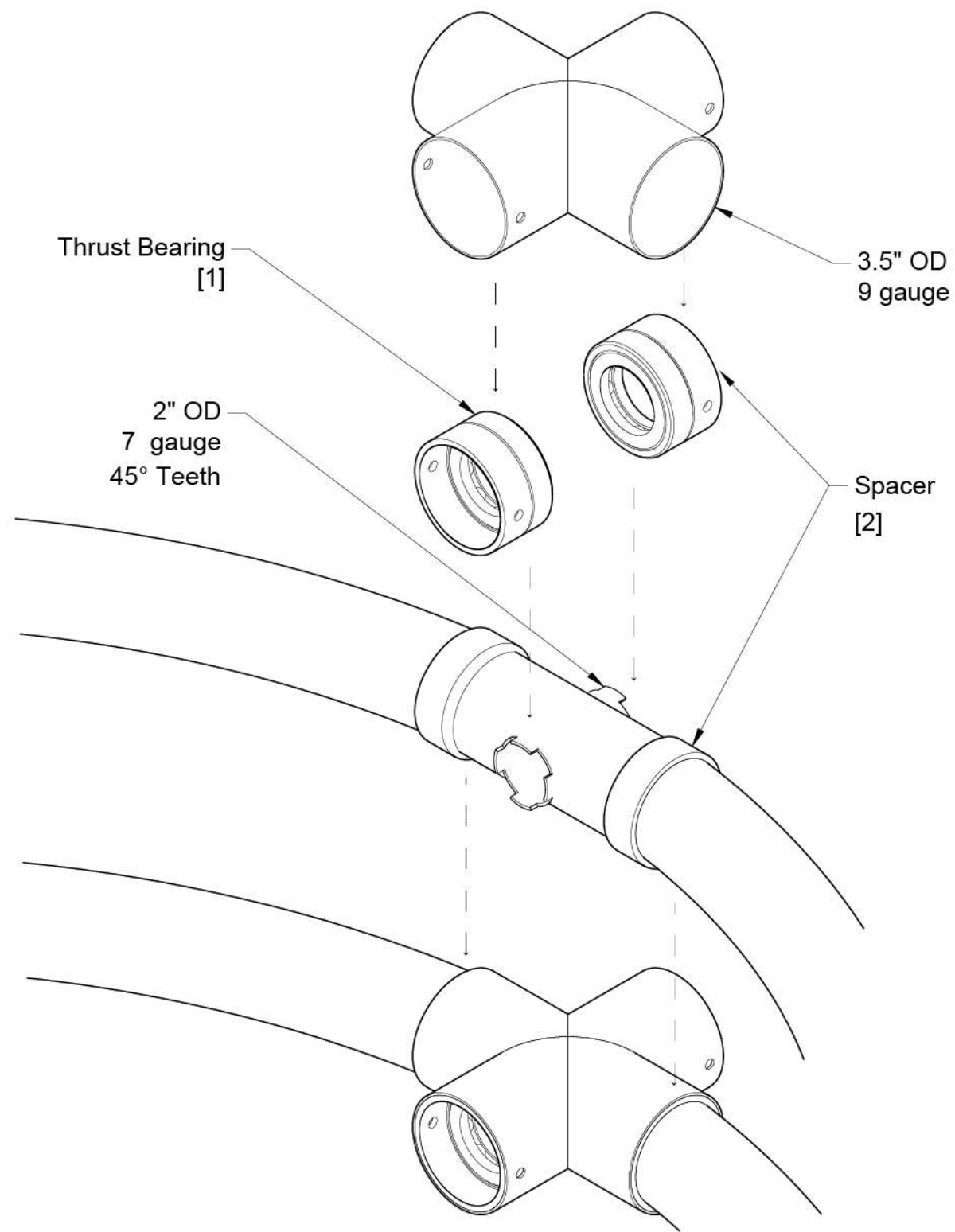
MIN SEAT HEIGHT: 6"



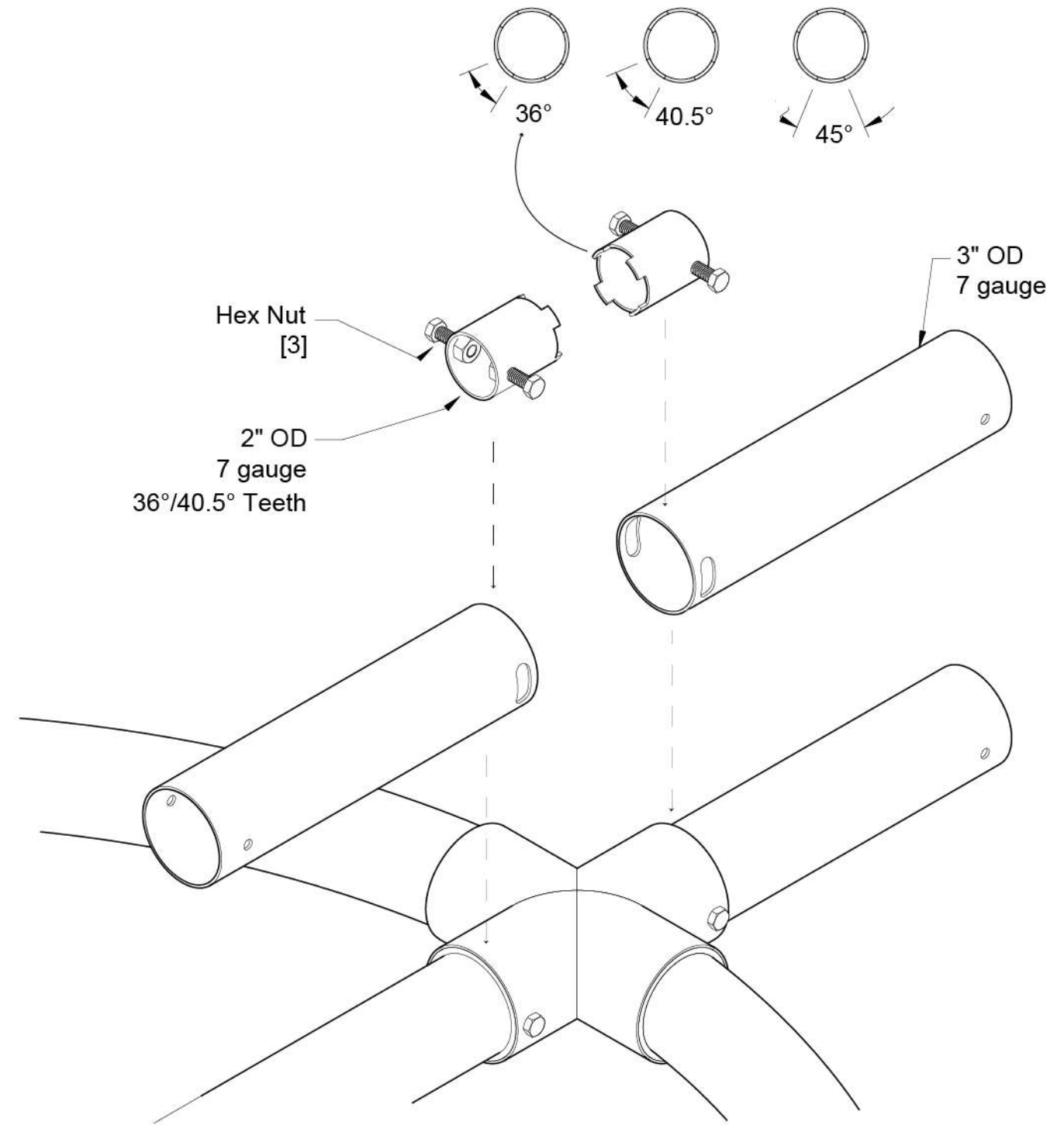




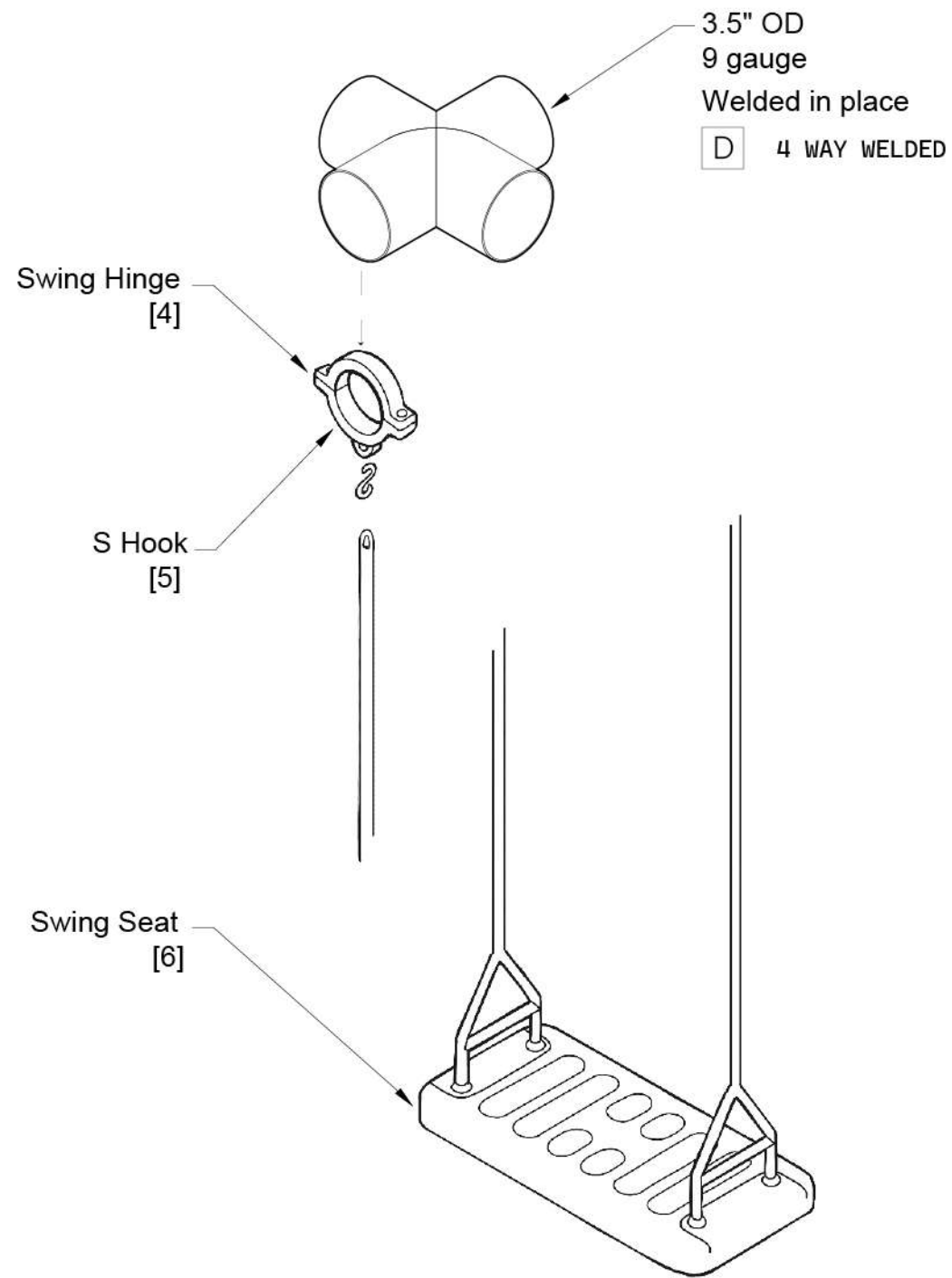




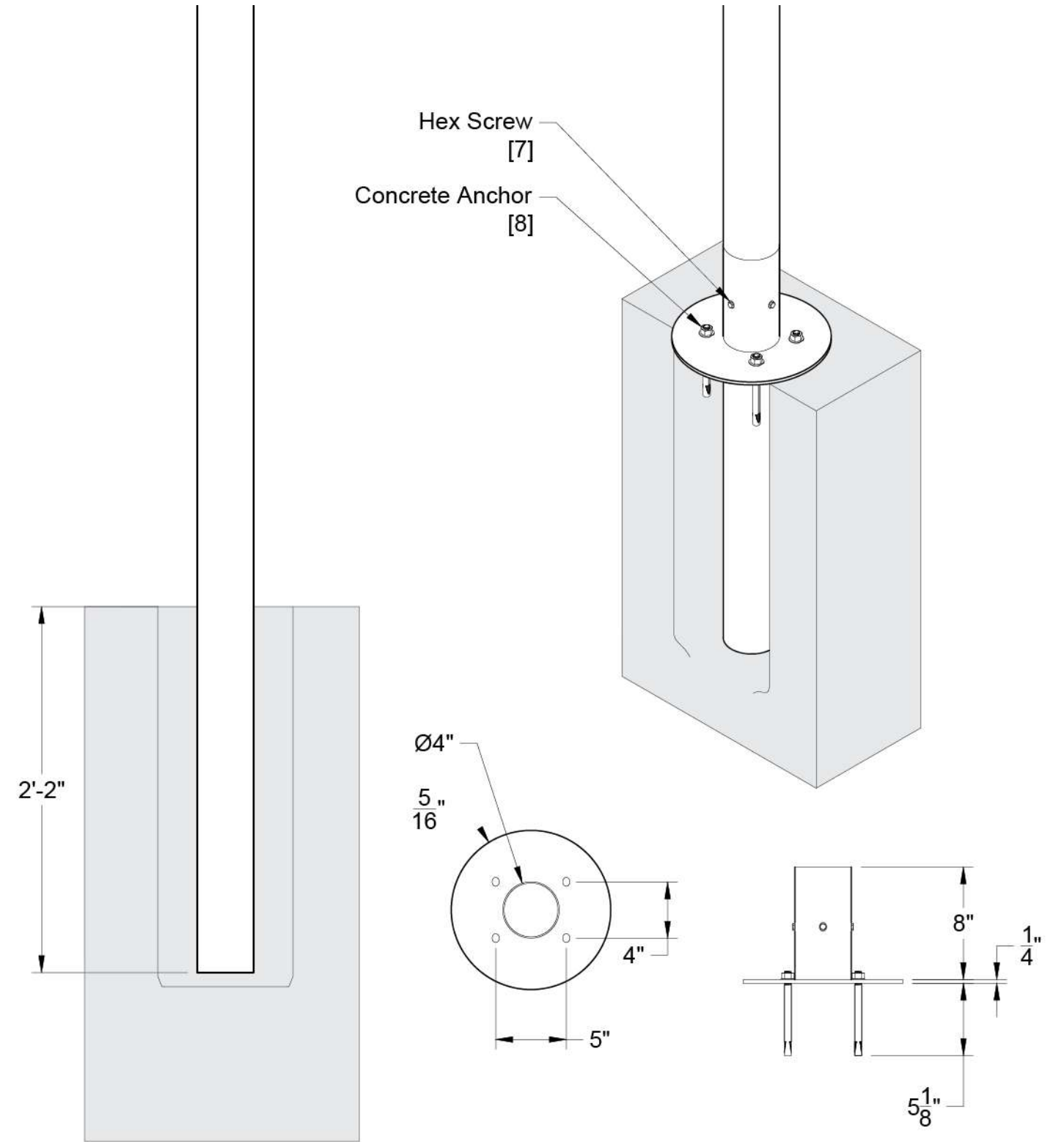
TEETH PIPE ENDS
SERVE AS END STOPS TO RESTRICT BEARING ROTATION.
36° FOR R2.25' SWING,
40.5° FOR R4.5' SWING



1:4 | 4" | A 4 WAY BEARING CONNECTOR



1:10 | 10" | B HANGING SEAT



1:10 | 10" | C ANCHOR TO CONCRETE

MATERIALS

TUBING

All tubing is Flo-Coat galvanized steel.
Supply Rite Steel offers recycled steel, and the Flo-Coat process.

General Assembly:

4" OD, 7 gauge:	Length	12.25'	Amount	3	
		10.5'		3	
3" OD, 7 gauge:	Length	3'	Amount	2	
		1'		4	
		8"		8	
		6.563'		4	(To bend)
		3.333'		4	(To bend)
		4.583'		2	
		8.5'		2	

OTHER

The base of the assembly is made out of concrete.
Beneath thw seats, it is required that a shock absorber is installed to a depth of at least 6".
Suggedted is Poured in Place Rubber from Pro Playground over mulch.

[A] 4 WAY BEARING CONNECTOR (x4)

This piece is used to rotate a load along a single axis a restricted number of degree.

Tubing:

2" OD, 7 gauge:	Length	1'	Amount	1x4
3.5" OD, 9 gauge:	Length	3'	Amount	1x4

- [1] Thrust Bearing Amount: 2x4
McMaster Carr: One-Piece Thrust Ball Bearing for 2" Shaft Diameter, 3-11/32" OD, Shielded
- [2] Spacer Amount: 2x4
3.75" OD, 3" ID, 1" thickness
- [3] Hex Nut Amount: 4x4
McMaster Carr: Super-Corrosion-Resistant 316 Stainless Steel Heavy Hex Head Screw for High-Pressure Applications, 3/8"-16 Thread, 1-1/4"

[B] HANGING SEAT (x4)

The seats hang from pat [D] off of the general assembly.

Tubing:

0.5" D:	Length	21'	Amount	1x4
---------	--------	-----	--------	-----

- [4] Swing Hinge Amount: 1x4
Buyswings: Commercial 3 1/2" OD Steel Pipe Swing Hanger
- [5] S Hook Amount: 1x4
Playsetparts: 5/16" S-Hook
- [6] Swing Seat Amount: 1x4
Swing Set Stuff Inc.: Swing Set Stuff Inc.
Rubber Mega Flat Seat Sturdy Durable

[C] ANCHOR (x6)

This piece secures the structure into the concrete base.

- [7] Hex Screws Amount: 4x6
McMaster Carr: Super-Corrosion-Resistant Bumax 88 Hex Head ScrewHigh-Strength, 1/4"-20 Thread Size, 3/4" Long
- [8] Concrete Anchor Amount: 4x6
McMaster Carr: Vibration-Resistant Stud Anchor for Concrete 1/2" Diameter, 6" Long

[D] 4 WAY WELDED (x4)

This piece is rigid and welded into place to hold the swings and rings.

Tubing:

3.5" OD, 7 gauge:	Length	1.5'	Amount	1x4
-------------------	--------	------	--------	-----

EXPERTS AND CONSULTANTS

A very special thanks to...



Nolan Fairley

**Mechanical Engineering
Student at RIT**



Dr. Sarilyn Ivancic

**Senior Lecturer
of Mechanical Engineering at
RIT**



Dr. Callie Babbitt

**Professor in the
Department of Sustainability
at RIT**