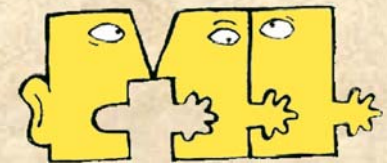


In-house Meeting with PEN-International NTID Team

Centre for Sign Linguistics and Deaf Studies
Chinese University of Hong Kong

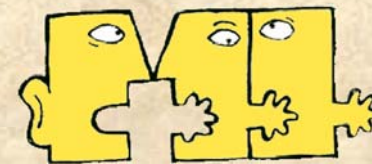
9 July 2007



CENTRE for Sign Linguistics and Deaf Studies

Agenda

10:00 – 10:20	Demonstration of Teaching Materials and WebCT course materials	Nippon Hong Kong Deaf Students
10:20 – 11:30	1) Comments and suggestions 2) Demonstration of RIT/NTID myCourses online resource	NTID Team
11:30 – 12:30	Dicussion on technical support needed in setting up regional training	Yiu & Jafi

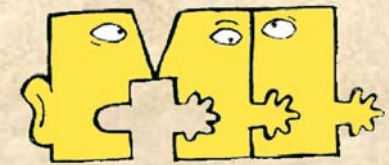


Progress on Materials Production

	Sign Language Teaching and Learning Materials			
	Book 1	Book 2	Book 3	Companion Electronic Dictionary
Manuscript Completed	✓	✓		
Work In Progress	-final review	-final review	✓ compiling manuscript	✓ program on test-run and data generated from 3 levels are being processed



A demo version of book 1



CENTRE for Sign Linguistics and Deaf Studies

A demo version of the Electronic Dictionary

The Electronic Dictionary

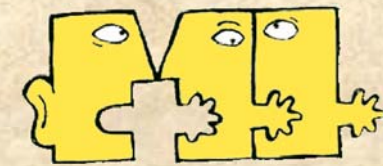
The screenshot displays the user interface of the Electronic Dictionary. On the left, there is a sidebar with the following elements:

- 手語查詢** (Sign Language Search)
- 快速檢索** (Quick Search) with the instruction "(輸入中文或英文單字)" (Enter Chinese or English words) and a search input field with a **搜尋** (Search) button.
- 其他檢索方法:** (Other search methods) with buttons for **中文** (Chinese), **英文** (English), and **手形** (Hand shape).
- Four hand gesture icons in a vertical column.
- Navigation buttons for **上一頁** (Previous page) and **下一頁** (Next page).

The main content area features a large video player with a play button and a progress bar. Below the video player, the search results are listed under the heading **檢索結果:** (Search results):

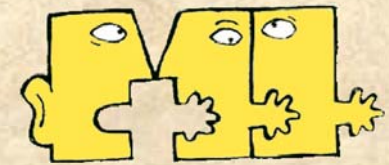
- 要
- 自己
- 知道
- 打算
- 美國
- 下面
- 何處
- 換
- 陪
- 同事
- 轉乘
- 真

At the bottom of the interface, there are logos for **EML** and **日本財團 The Nippon Foundation**.

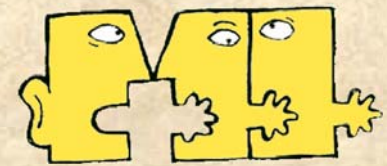


Other Training Activities

- A. Hong Kong Sign Language: Beginners course
- Online materials - WebCT



END



CENTRE for Sign Linguistics and Deaf Studies