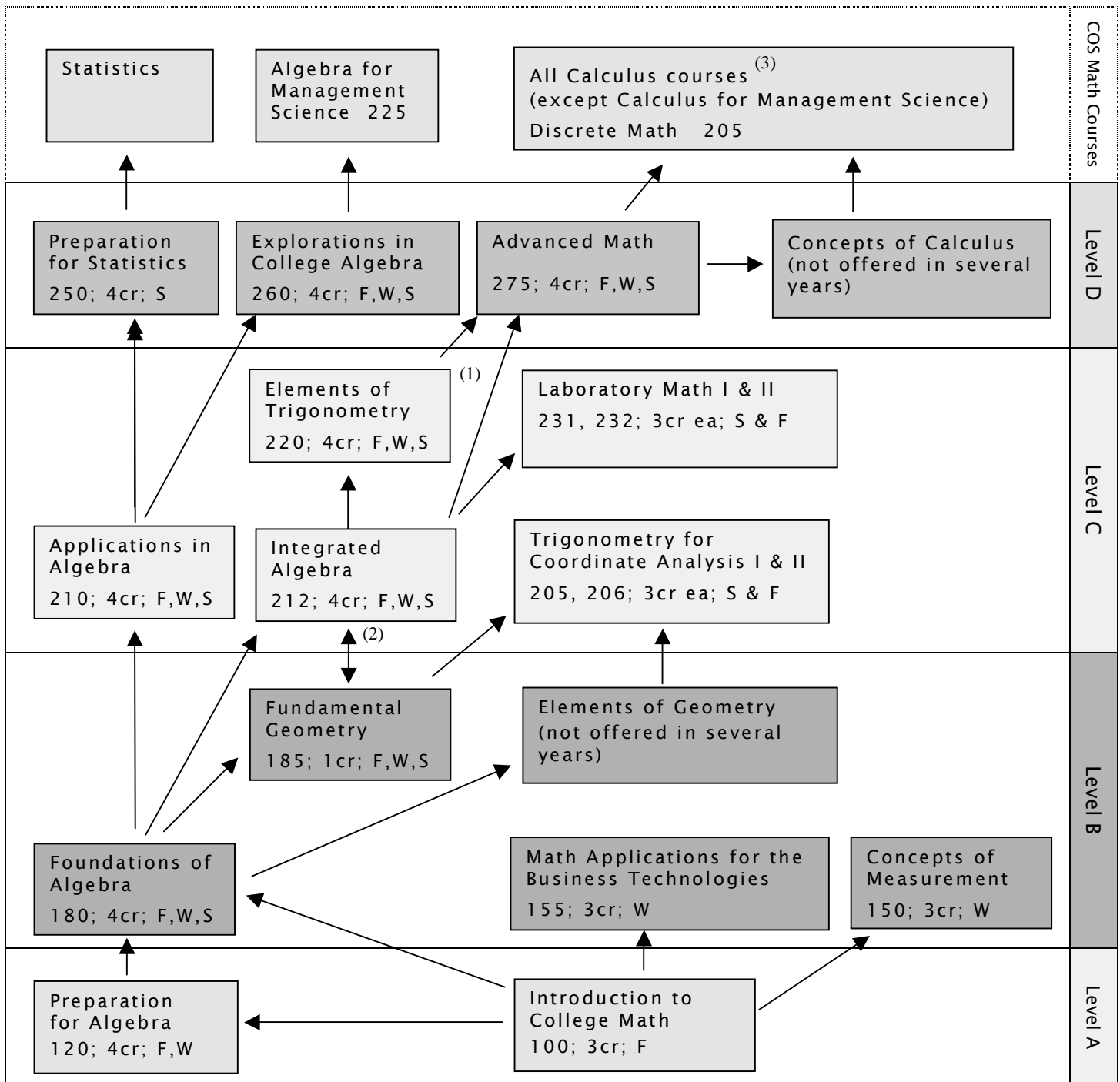


## NTID MATHEMATICS CURRICULUM MAP 2006-7

All Courses



- (1) This arrow indicates a **possible** path for some students whose program does not require Elements of Trigonometry. For example, Biology students could proceed from Integrated Algebra directly to Advanced Mathematics. **However, most students are required to take Elements of Trigonometry before Advanced Mathematics.**
- (2) This arrow indicates that the course **Fundamental Geometry** will usually be taken concurrently with **Integrated Algebra**.