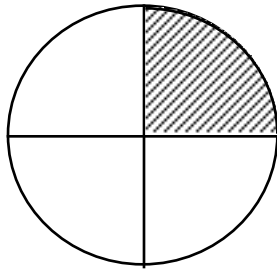


MATHEMATICS PLACEMENT TEST
(A few sample questions)

1. What percent of this diagram is shaded?



- A) 50% B) 25% C) 75% D) 37.5% E) $\frac{1}{4}$ %
F) none of these

1. 75%-80% answer correctly (B)	Placement Level A
------------------------------------	-------------------

6. Point P represents the number:



- A) $1\frac{3}{4}$ B) $\frac{1}{2}$ C) $1\frac{3}{5}$ D) $1\frac{4}{6}$ E) $\frac{3}{5}$
F) none of these

6. 45%-50% answer correctly (C)	Placement Level A/B
------------------------------------	---------------------

25. Which of the following numbers is the largest:

-5, 1, -3.2, $\frac{1}{30}$, 0.625

A) -5 B) 1 C) -3.2 D) $\frac{1}{30}$ E) 0.625

F) none of these

25. 75%-80% answer correctly(B) Placement Level A/B

19. For the equation $2x - y = 15$, the following pair of values (x,y) is a solution:

A) (9,3) B) (9,-3) C) (0,15) D) (10,-5) E) (8,0)

F) none of these

19. 45%-50% answer correctly(A) Placement Level A/B

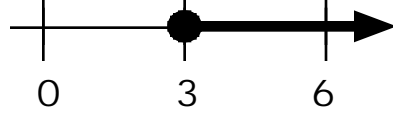
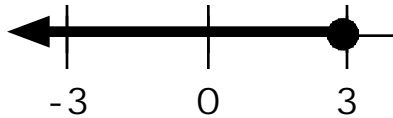
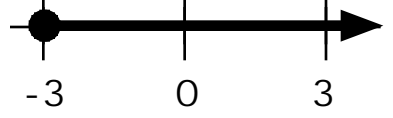
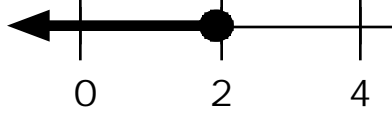
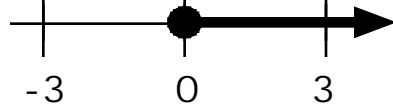
24. The solution of the equation $5(x - 7) = 2x + 1$ is:

A) 2 B) $\frac{8}{3}$ C) $\frac{36}{7}$ D) -12 E) 12

F) none of these

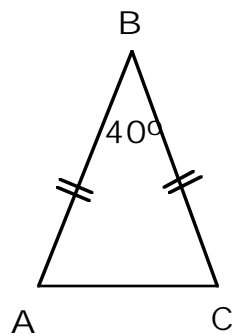
24. 60%-65% answer correctly(E) Placement Level B

31. The graph of $x \geq 3$ on the number line is which of the following:

- A)  B) 
- C)  D) 
- E)  F) none of these

31. 60%-65% answer correctly(B) Placement Level B/C

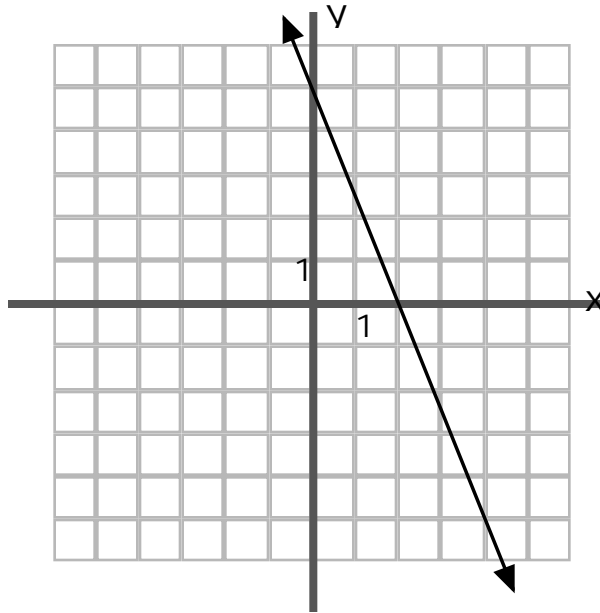
39. In the triangle below, the measure of angle A is: $m(\angle A) = \underline{\hspace{2cm}}$



- A) 50° B) 140° C) 70° D) 40° E) 45°
- F) none of these

39. 50%-55% answer correctly Placement: Geometry

32. The equation $5x + 2y = 10$ is graphed below:



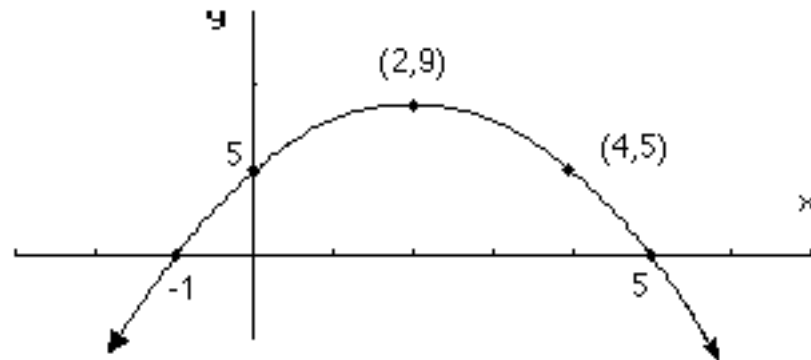
The slope of this line is

- A) $-\frac{5}{2}$ B) $\frac{5}{2}$ C) $\frac{2}{5}$ D) $-\frac{2}{5}$ E) 5

F) none of these

32. 20%-25% answer correctly(A) Placement: Level B/C
--

45.



Here is the graph of a function $y = f(x)$.

Which of the following statements is true?

- A) The function has a maximum at $x = 5$.
- B) The function has a minimum at $x = -1$.
- C) The vertical intercept of the graph is $(0, -1)$.
- D) The graph has two horizontal intercepts.
- E) The function has no maximum value.
- F) none of these

45. 20%-25% answer correctly(D)

Placement: Level C/D