



Information for VR Providers

RIT | National Technical Institute for the Deaf

rit.edu/ntid/smartinvestment



**No other university
in the world provides
better support for deaf
and hard-of-hearing
students, and no other
college provides
better outcomes.**

The world is an exciting place full of challenges and opportunities. For deaf and hard-of-hearing students, the challenges can be greater and the opportunities harder to find. The key to success is a good education, and the best education is one designed especially for them.

That's what your clients will find at Rochester Institute of Technology and the National Technical Institute for the Deaf—an outstanding education designed with their needs in mind and delivered by dedicated professionals with decades of experience educating

deaf and hard-of-hearing students. Learn more about what makes RIT/NTID the best choice for your clients and a smart investment for you.

Proven Success for Deaf and Hard-of-Hearing Students

95%

Placement rate within one year of graduation for deaf and hard-of-hearing students seeking employment

10k+

RIT/NTID graduates working across the country and around the world

200

Average annual co-op assignments for deaf and hard-of-hearing students

35+

Employers who attend annual Career Fair for deaf and hard-of-hearing students

49

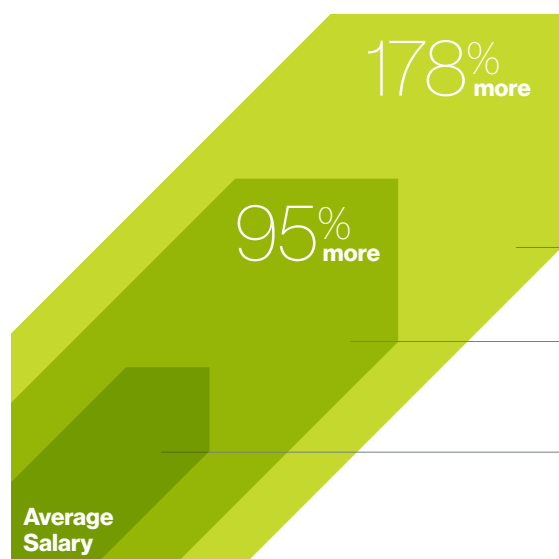
RIT deaf and hard-of hearing students come from 49 states and 13 countries.

77%

First-year persistence rate for deaf and hard-of-hearing students

Higher Earnings

Median Salary at Age 50



Deaf and hard-of-hearing RIT/NTID graduates are competitive in the marketplace.

According to a study conducted with the Social Security Administration, deaf and hard-of-hearing RIT/NTID graduates had higher career earnings than their deaf and hard-of-hearing peers who attended other postsecondary institutions.

RIT/NTID Graduates (Bachelor's)

RIT/NTID Graduates (Associate)

Deaf and Hard-of-Hearing Graduates of Other Postsecondary Institutions

Career Preparation and Co-op

RIT/NTID has a proven track record of successful employment of graduates in all sectors of the economy.

Looking at job placement by economic sector, 78 percent of RIT/NTID graduates have acquired jobs in business and industry, 13 percent in education/nonprofit, and 9 percent in government. At RIT/NTID, employers find and hire highly skilled tech-savvy workers with hands-on training who are motivated to succeed.

While students work hard to develop skills that will prepare them for careers, employment specialists from the NTID

Co-op and Career Center spend more than one-third of the year traveling coast to coast, connecting with employers to create a climate for successful job placement.

Cooperative Education

RIT/NTID's career-focused programs offer hands-on experience through cooperative education (co-op). Co-op is full-time, paid work experience directly related to a student's course of study and career interests. In addition to offering professional work experience and providing the opportunity to develop a valuable network of contacts, co-op is an excellent way to enhance important

business success skills—leadership, decision-making, communication, professionalism, flexibility, and independence.

The RIT/NTID Advantage

Students work with faculty, staff, counselors, and advisors, who often become mentors and role models, to develop professional skills and prepare for a career.

RIT/NTID alumni, who work all over the nation, also are mentors and role models and often return to represent their companies at the NTID Career Fair or at specially scheduled on-campus interview events.



Selected national and international companies that have hired **RIT/NTID** students and graduates

- BNY Mellon
- Caterpillar, Inc.
- Defense Finance and Accounting Service
- Dow Chemical Company
- General Electric
- Google
- Honda
- IBM
- Lockheed Martin
- Merck
- Microsoft
- NASA
- National Institutes of Health
- Naval Supply Systems Command
- Solar Turbines
- Tesla Motors
- Texas Instruments
- Toyota
- Tufts University
- U.S. Department of Defense
- Whirlpool
- Yahoo!



Access and Support Services

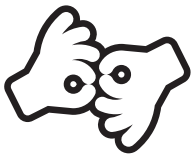
RIT helps level the playing field for deaf and hard-of-hearing students.

RIT provides one of the most accessible education communities in the world for deaf and hard-of-hearing students. No outside efforts by your clients are necessary to set up access services—they are part of an RIT education.

RIT provides access services and support to meet the needs of deaf and hard-of-hearing students enrolled in degree programs across the university. Services also are provided for non-academic events and activities throughout the RIT community. With the largest staff of professional interpreters and real-time captionists of any college program in the world, RIT is the world's most accessible university.

- Sign language interpreting
- Real-time captioning
- Classroom notetaking services
- Captioned classroom video material
- FM/Roger systems

Alternative services also may be provided. Students have access to educational support services such as tutoring, personal and career counseling, and academic advising with professionals who are skilled at working with deaf and hard-of-hearing students of all communication modes.



130

in-house interpreters



60

real-time captionists



500

trained notetakers

Audiology and Speech/Language Services

Communication Services

Deaf and hard-of-hearing students have audiological, cochlear implant, and speech-language support right here on the RIT campus in the Communication Studies and Services Department. Appointment and walk-in services are available.

Full-time, on-site audiologists, accredited by the American Speech-Language-Hearing Association (ASHA), provide services related to hearing, hearing aids, cochlear implants, accessories, and assistive listening

technology for all deaf and hard-of-hearing students on campus. This includes the 74% of our students who use hearing aids and/or cochlear implants.

Students also have the advantage of access to full-time, on-campus speech-language pathologists, also accredited by ASHA, who offer a broad range of speech and language services, including specialized instruction for job interview and workplace communication.

Exceptional Value and Affordability

RIT is an affordable choice and an excellent value for you and your clients. **Because RIT receives federal support, students who are deaf or hard of hearing pay less than one-half of RIT's regular tuition rate.**

In addition to the substantial tuition reduction, a variety of financial aid options are available, including scholarships, grants, loans, and supplemental Social Security assistance.



RIT provides an environment where I can thrive academically and professionally, surrounded by supportive peers and mentors. My co-op experience in the Community Affairs Bureau at the New York Police Department developed my teamwork, communication, and time management skills, and aligns closely with my career goals of working in administration while advocating for inclusivity and accessible communication.”

HERIBERTO ALMONTE MEDINA

Administrative Support Technology



RIT was my top choice for undergrad because of my acceptance into the RIT BS/MD program partnership with SUNY Upstate Medical University and the opportunity to make connections with the Rochester Deaf community. The extracurricular activities I’m involved with, extensive undergraduate research opportunities available, and the support of a large Deaf community on campus is making my time at RIT an outstanding experience.”

ELLIE WARREN

Biomedical Sciences and Applied Spanish Language



At RIT, I excel in and out of the classroom. I was named the NTID Undergraduate Delegate for my accomplishments. As a student leader I have served as president of Hands of Fire, secretary of the Asian Deaf Club, as an ASL consultant in the Department of Access Services, and was a member of the Randleman Program, working with interpreters. I also serve as a research assistant in NTID’s Deaf Health Lab. All of these experiences have prepared me well for my future.”

MAAMEYAA ASIAMAH

Laboratory Science Technology/ Biochemistry

Pathways to Success

Bachelor’s Degree Programs

Your clients can pursue any of more than 90 exciting and challenging majors offered in art and design, business, computing and information sciences, engineering, health sciences and technology, liberal arts, science, and more.

Pre-Baccalaureate Programs

Clients who would like to enter a bachelor’s degree program, but need to complete some courses in order to qualify for admission, may be eligible to enter a pre-baccalaureate program. These individualized programs prepare your client to enter a bachelor’s degree as soon as academically ready.

Associate+Bachelor’s Degree Programs

RIT’s National Technical Institute for the Deaf offers an array of associate degree programs that provide a solid foundation for entry into RIT bachelor’s degree programs.

Career-Focused Associate Degree Programs

If your clients are looking for the fast track to career success, they may choose to pursue an associate degree in any of our state-of-the-art technical programs in business, engineering, information technology, liberal arts, science, and visual communications.

Undecided

RIT is one of the few universities where students can immerse themselves in a major from day one. But, if your student needs more time to evaluate their interests and explore which major best suits their career aspirations, exploration options are available in each college. Exploration options enable students to take up to one year (two semesters) to take a variety of courses, explore majors and career paths, and make an informed decision about which major is best, all while they remain on pace to graduate on time.



At RIT, we blend technology, the arts, and design. Together, our kaleidoscope of engaged, socially conscious, and intellectually curious minds uncovers meaningful ways to **move the world forward.**

RIT

Rochester Institute of Technology
NTID Office of Admissions
52 Lomb Memorial Drive
Rochester, New York 14623-5604

Follow us
@ritntid



©2025 Rochester Institute of Technology. All rights reserved.
RIT and NTID are registered trademarks of Rochester Institute of Technology.
1300-FY25-00344-7/25-HUB-JS_JSA



RIT
Nondiscrimination
Notice