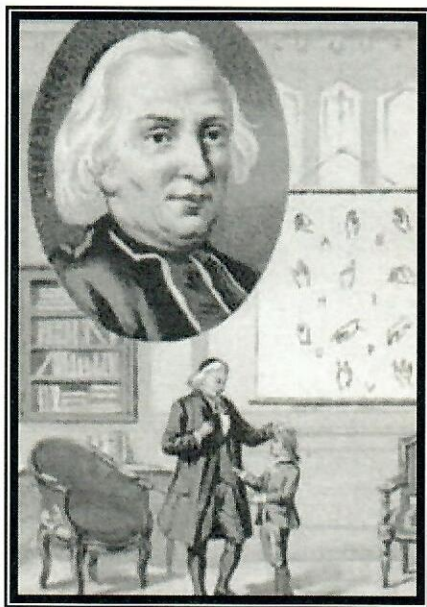


The RIT ASL & Deaf Studies Community Center

Presents:

Deaf-Mute Banquet



In the honor of
the Abbé de l'Épée's 300th birthday
Dinner at Dyer Art Gallery &
Film Screening at the Robert F. Panara Theatre
Friday, November 9, 2012
Rochester Institute of Technology
Rochester, New York



Abbé Charles-Michel de l'Épée



All great victories in this world have been achieved by ordinary people, ordinary people with extraordinary resolve. These pioneers were often shot down, scoffed at, and pushed aside; yet a few rose from the ashes, continued the fight, and humbly found their place in history. We call these people heroes. We gather today to commemorate the life of Abbé de l'Épée and his firm belief in the dignity of Deaf people and their language. By example, he continues to inspire others to such heroic deeds.



Letter of Welcome

Welcome to the Abbé de l'Épée's 300th Birthday Banquet! We are delighted you could join us for this wonderful celebration of an individual who had a profound effect on the education of deaf people around the world.

When Abbé Charles-Michel de l'Épée founded the first school for the deaf in Paris in 1760, he believed deaf people were capable of understanding language. Up until that time, it was commonly thought that deaf individuals could not understand language, therefore making them unable to receive church sacraments and destined for an eternity in hell.

Just imagine what he would think if he set foot upon the RIT campus today! He would see a thriving community of deaf and hard-of-hearing students interacting on equal levels with their hearing peers. He would see them studying engineering, chemistry, accounting, laboratory science technology, computer programming, and much more. He would be delighted that these deaf students are succeeding.

Not only are our students succeeding, but also our faculty and staff who are deaf or hard of hearing are also succeeding, teaching them the knowledge they come to RIT to receive.

He would surely be surprised at how easy communication can occur between deaf and hearing people on campus. Our Access Services department provides thousands of hours of interpreting, classroom captioning, and notetaking for our students each quarter.

Today, 300 years after Abbé de l'Épée's birth, the world has come a long way. And it has become a better place, providing more opportunities for deaf and hard-of-hearing individuals to become productive members of our communities.

Let us lift our glasses and toast Abbé de l'Épée, his vision, and his spirit, which has undoubtedly found its way on our campus three centuries after his birth. We are grateful for his philanthropy, his dedication, and his vision.

We hope you will be able to join us after the banquet for a screening of the film *The Count of Solar* in the Panara Theatre.

Bon appétit!

Dr. Gerard J. Buckley
President, NTID
Vice President and Dean, RIT

Evening Program

Guest arrival at 5:00pm

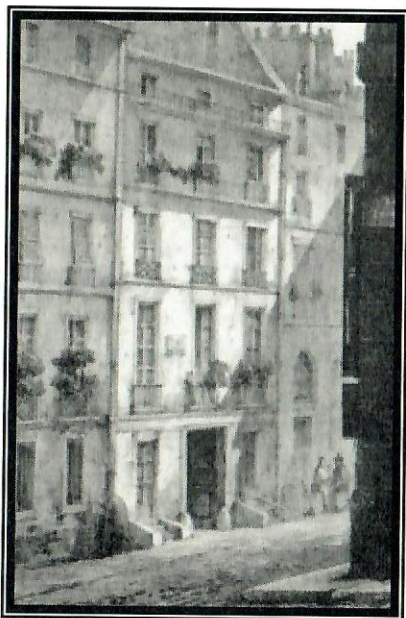
Special guest speaker at 5:15pm

Dinner serves at 5:30pm

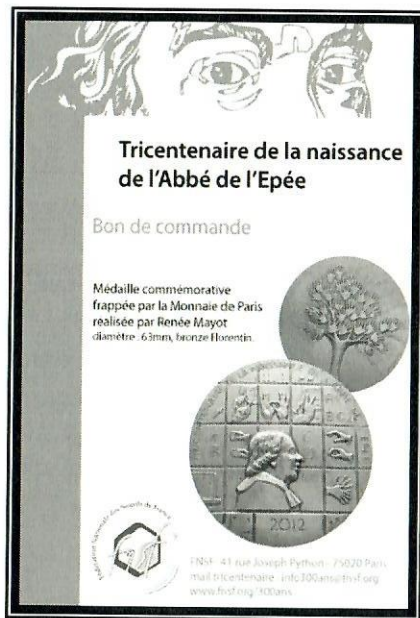
Film showing in the Robert F. Panara Theatre at 7:00pm

The Count of Solar

While dining, you will be visited by historical characters, who will share with you their inspiring stories of struggle and triumph. These men and women are Deaf figures who received their education from the Paris Deaf Institute.



Institut National des Jeunes Sourds-Muets



Novemeber 24th, 2012

Banquet Menu

Starter

Mixed green salad with house dressing

Entrée

Chicken French in a lemon butter sauce served with garden rice and seasonal vegetables

For our vegetarian guests, Portobello stacked with marinated grilled vegetables and topped with melted mozzarella cheese served with brown rice.

Dessert

Marble cake

Beverage

Water Coffee Tea
Sparkling Grape Juice

During the early 1830's, the French government favored the upper middle class and their social advancement. The social environment was repressive for anyone below the middle class, including the Deaf community. The Paris Deaf Institute was taken over by hearing professionals who supported oral methods. In response to this, Berthier and several other Deaf professors began a cultural movement by holding the Deaf-Mute banquets annually on de l'Épée's birthday, honoring his contributions to French Sign Language and Deaf education. These banquets also celebrated Deaf cultural expression, Deaf identity, and the exchange of political ideas.

(Quartararo 2008, pp 110-116)



Special Guest: Guillaume Chastel

Guillaume Chastel was born in Paris and grew up in Aix-en-Provence in the South of France. He is fluent in both American Sign Language and French Sign Language. He earned his B.A. degree in Math Education in 1996 and his Master's Degree in Deaf Education in 1997, both from Gallaudet University.

Mr. Chastel taught high school and middle school Math and Science at the Governor Baxter School for the Deaf in Maine, as well as high school Math classes at the Rochester School for the Deaf. For five years, he taught in the ASL/Interpreting Program at the University of Southern Maine. While at USM, Guillaume also developed and implemented an international course in which students traveled to France under his guidance and learned French Sign Language, French Deaf Culture, and French Culture.

Currently, Mr. Chastel is a full-time instructor in the ASL Program at the University of Rochester, where he teaches ASL and LSF and is planning a Summer Abroad course in France.

Cast of Historic Characters

Abbe de l'Épée.....RICHARD "SMITTY" SMITH

Ferdinand Berthier.....GUILLAUME CHASTEL

The twin sisters.....STACY LAWRENCE &
JOAN NATURALE

Jean Massieu NICHOLAS SHAW

Laurent ClercSCOTT COHEN

Madam Claudius Forestier.....LEISA BOLING

Emile MercierCORY BEHM



Ferdinand Berthier



Jean Massieu



Laurent Clerc



Twin Sisters



Emile Mercier



◇ Unable to locate the image for
Madam Claudius Forestier



Banquet Sponsors

NTID President's Office	Department of ASL & Interpreting Education (ASLIE)
Department of Cultural and Creative Studies (DCCS)	RIT Division of Student Affairs
Engineering Studies Department	The Wallace Center
The Dyer Art Gallery	Rochester School for the Deaf
Marketing Communications	St. Mary School for the Deaf

Committee Members

Jeanne Behm	Joan Naturale
Kathy Darroch	Leisa Boling
Aaron Kelstone	Stacy Lawrence
Barbara Ray Holcomb	Scott Cohen
Chris Kurz	Jennaca Longley
Cheri McKee	

The RADSCC is pleased that you could join us in commemorating the Paris deaf-mute banquets. We trust you have found the conversations stimulating and have enhanced your appreciation of de l'Épée's important contributions to Deaf culture and education of the deaf worldwide.