





SENTINEL

THE DESIGN, FABRICATION, & INSTALLATION OF
THE MONUMENTAL SCULPTURE BY ALBERT PALEY
AT ROCHESTER INSTITUTE OF TECHNOLOGY, NY







ALBERT PALEY | PORTALS & GATES

NAPLES MUSEUM *of* ART



Paley Ca
Endowed
Michael & D
Stephan

583

ember 2000







INSPIRATION

&

GLASS • Steel Exhibition Design

MEDE





ALBERT PALEY

SCULPTURE, DRAWINGS, GRAPHICS & DECORATIVE ARTS



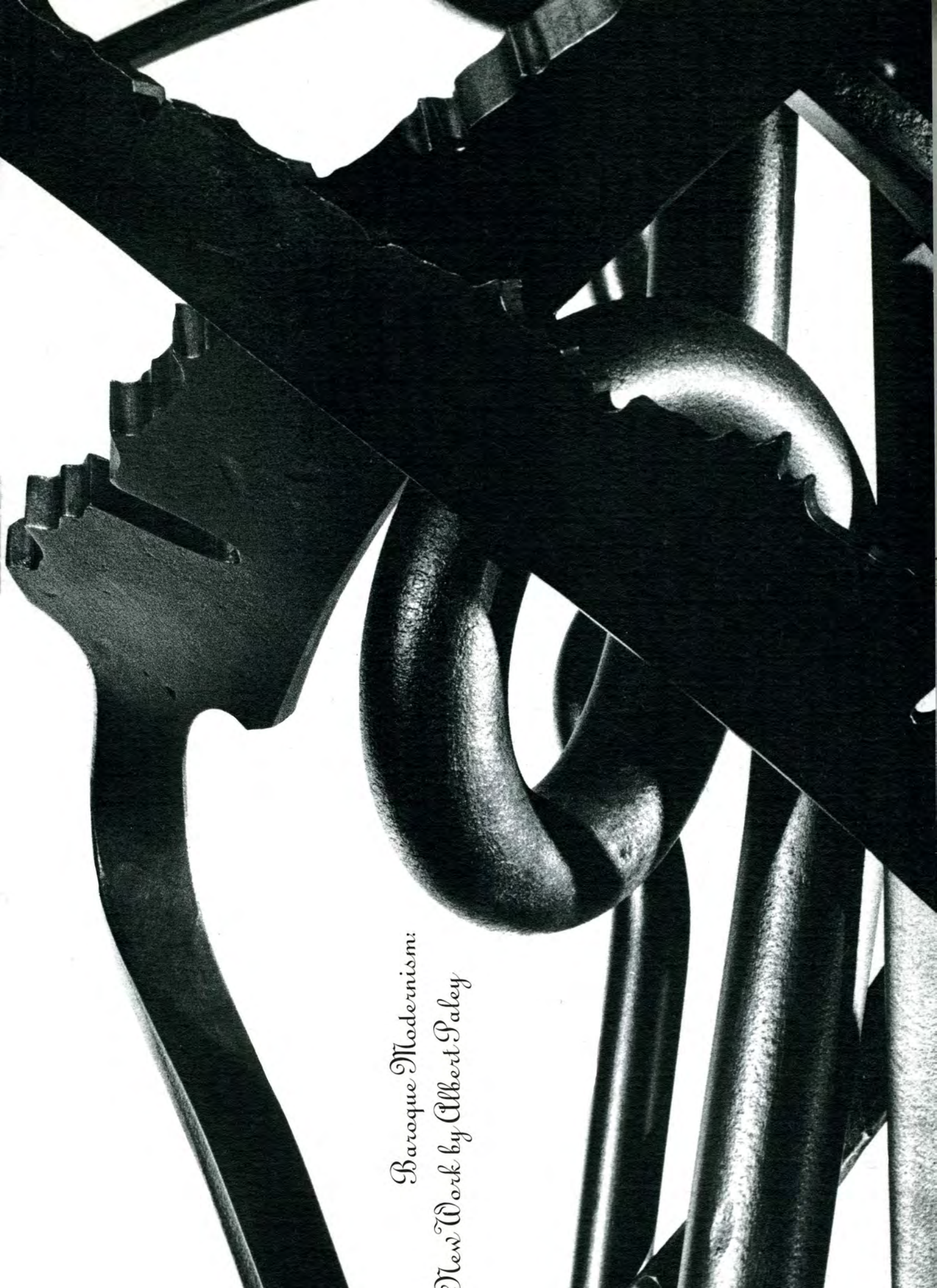
FLORIDA STATE UNIVERSITY MUSEUM OF FINE ARTS
SCHOOL OF VISUAL ARTS & DANCE





ALBERT PALEY



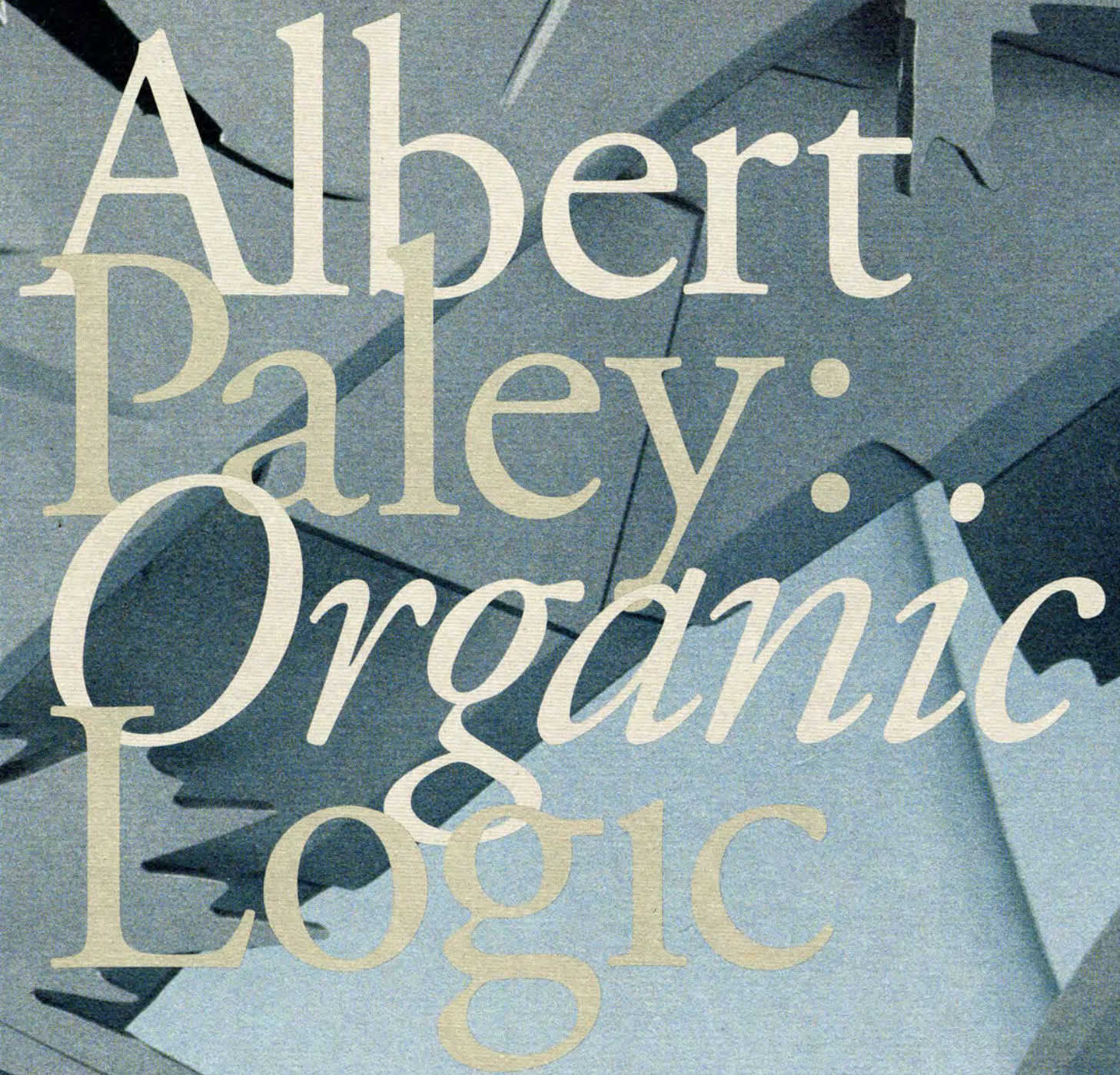


*Baroque Modernism:
New Work by Albert Paley*





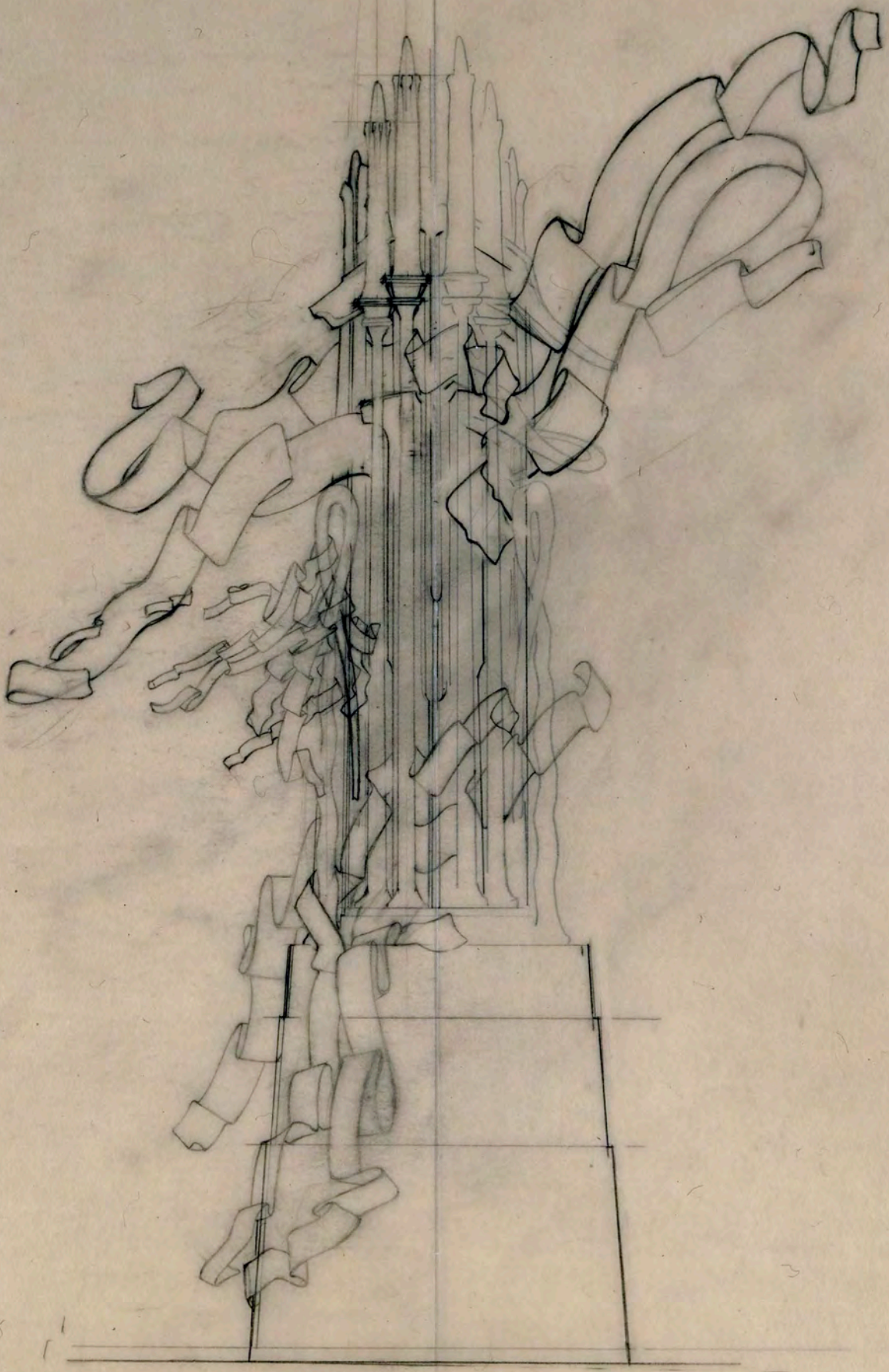




Albert
Paley:
Organic
Logic







Handwritten signature



Albert Paley
Eclipse
Bronze, Steel and Weathering Steel
Commissioned by
Paley for the City of New York





ONE WAY

Albert Paley
QR CODE

ALBERT PALEY: The Iron Aesthetic

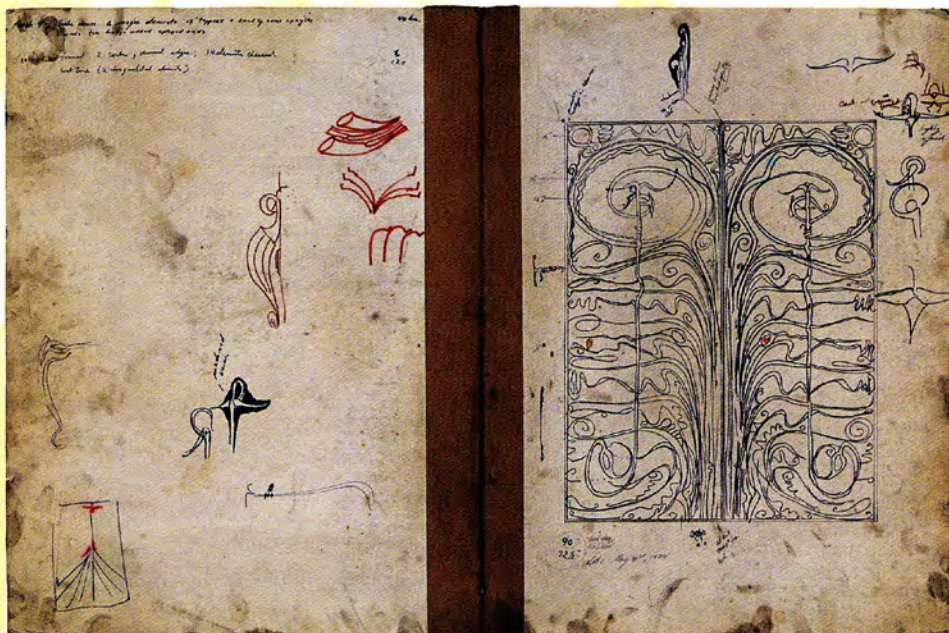


December 1983–January 1984
Fendrick Gallery, Washington, DC 20007





Inspiration & Context: The Drawings of Albert Paley



An abstract sculpture by Albert Paley, featuring large, angular, metallic plates in shades of blue, orange, and grey. The sculpture is composed of several large, flat, angular plates in shades of blue, orange, and grey, arranged in a complex, overlapping composition. The lighting creates strong shadows and highlights, emphasizing the three-dimensional quality of the work. A prominent feature is a large, dark, circular shape on the left side, which appears to be a cutout or a shadow cast by one of the plates. The overall effect is one of dynamic movement and geometric complexity.

Albert Paley

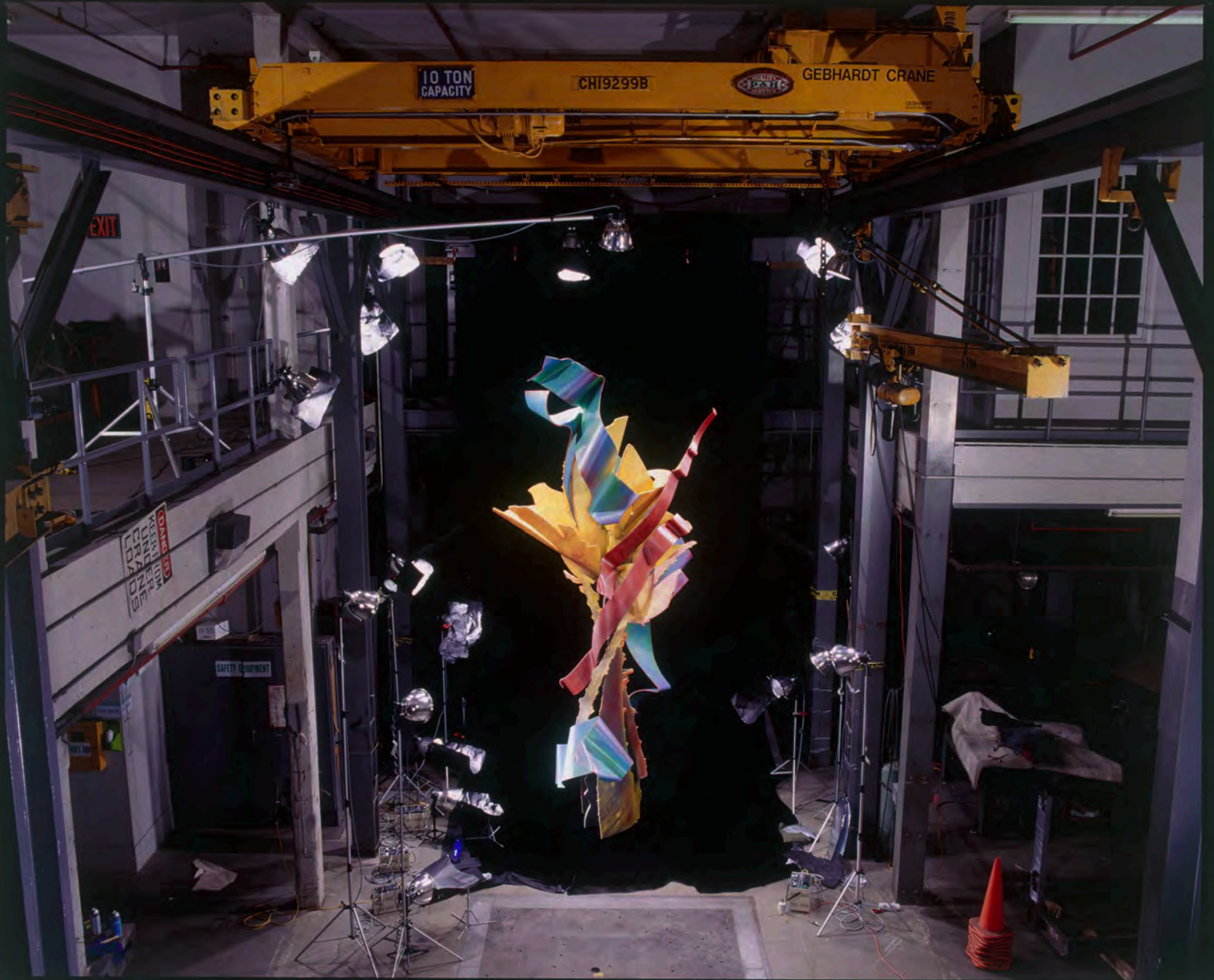
Sculpture



KODAK E100SW

46

KODAK E100SW



▶ 5



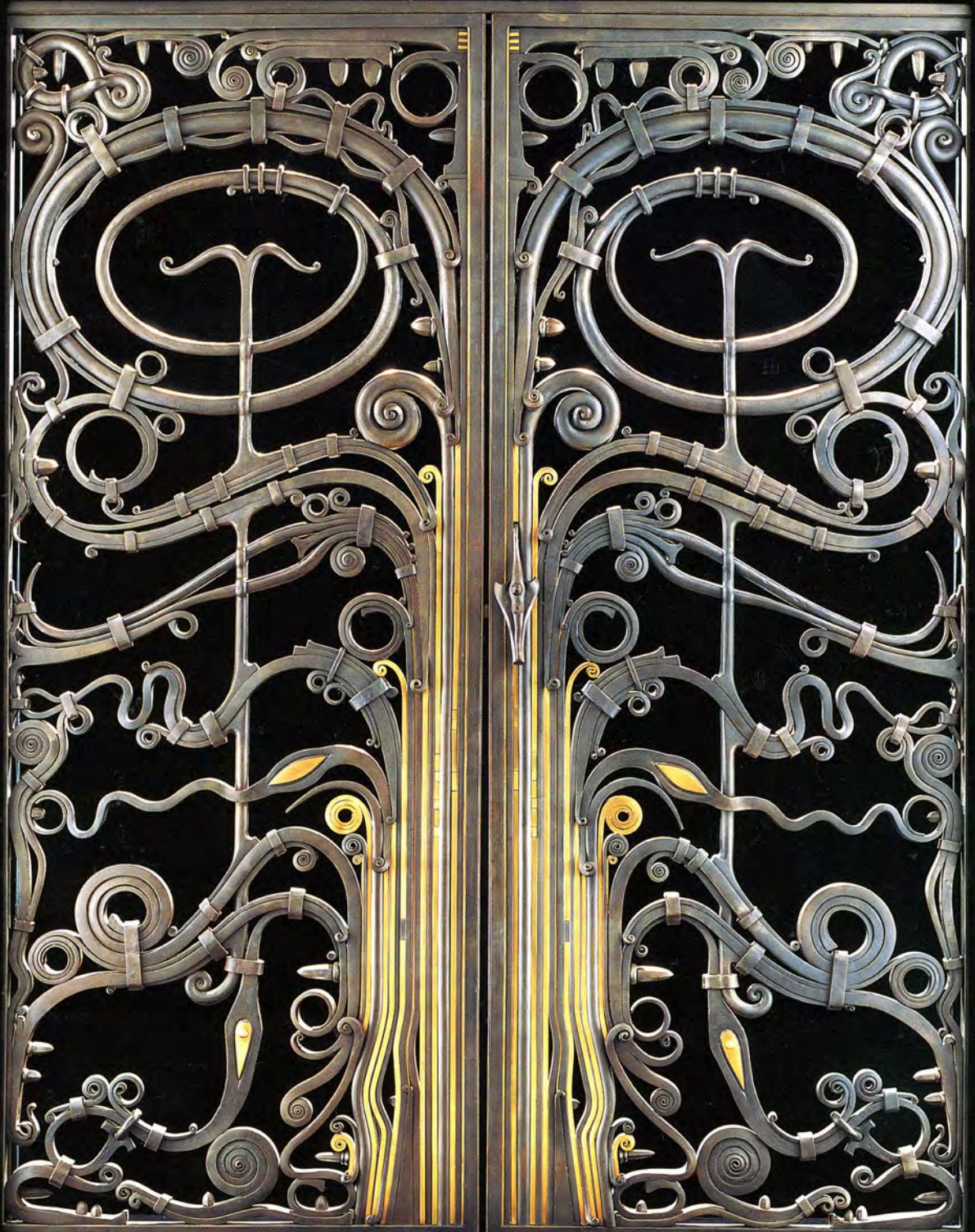
John Kelly



THE ART OF ALBERT PALEY

IRON & BRONZE & STEEL

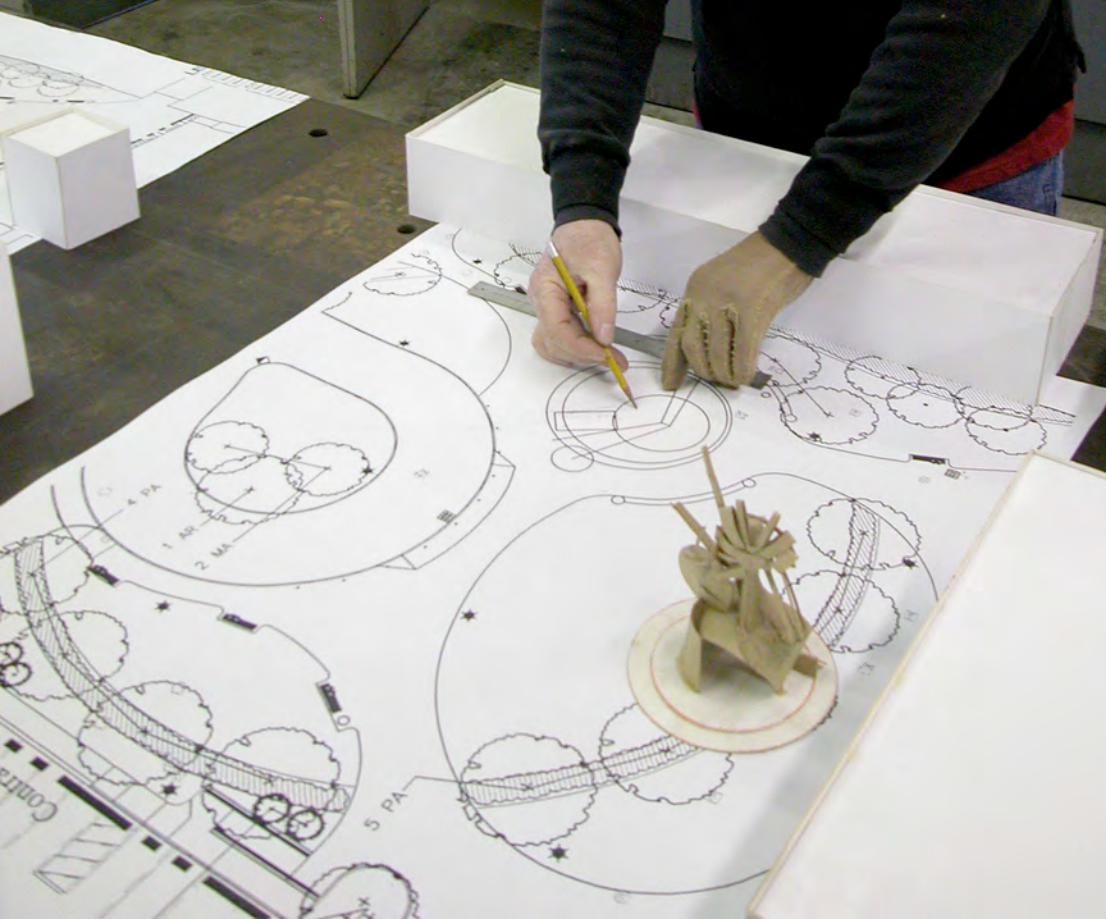
Edward Lucie-Smith



SAFETY EQUIPMENT



A man with a mustache and long hair, wearing a dark jacket, is focused on his work. He is using a yellow pencil and a ruler to draw on a large architectural plan spread out on a table. The plan features various circular and curved structures, possibly a stadium or arena, with labels like "1 SA", "2 MA", "4 PA", and "5 PA". A small wooden model of a structure is on the table. In the background, there is a doorway with coats hanging on a rack and a sign that says "SAFETY EQUIPMENT".









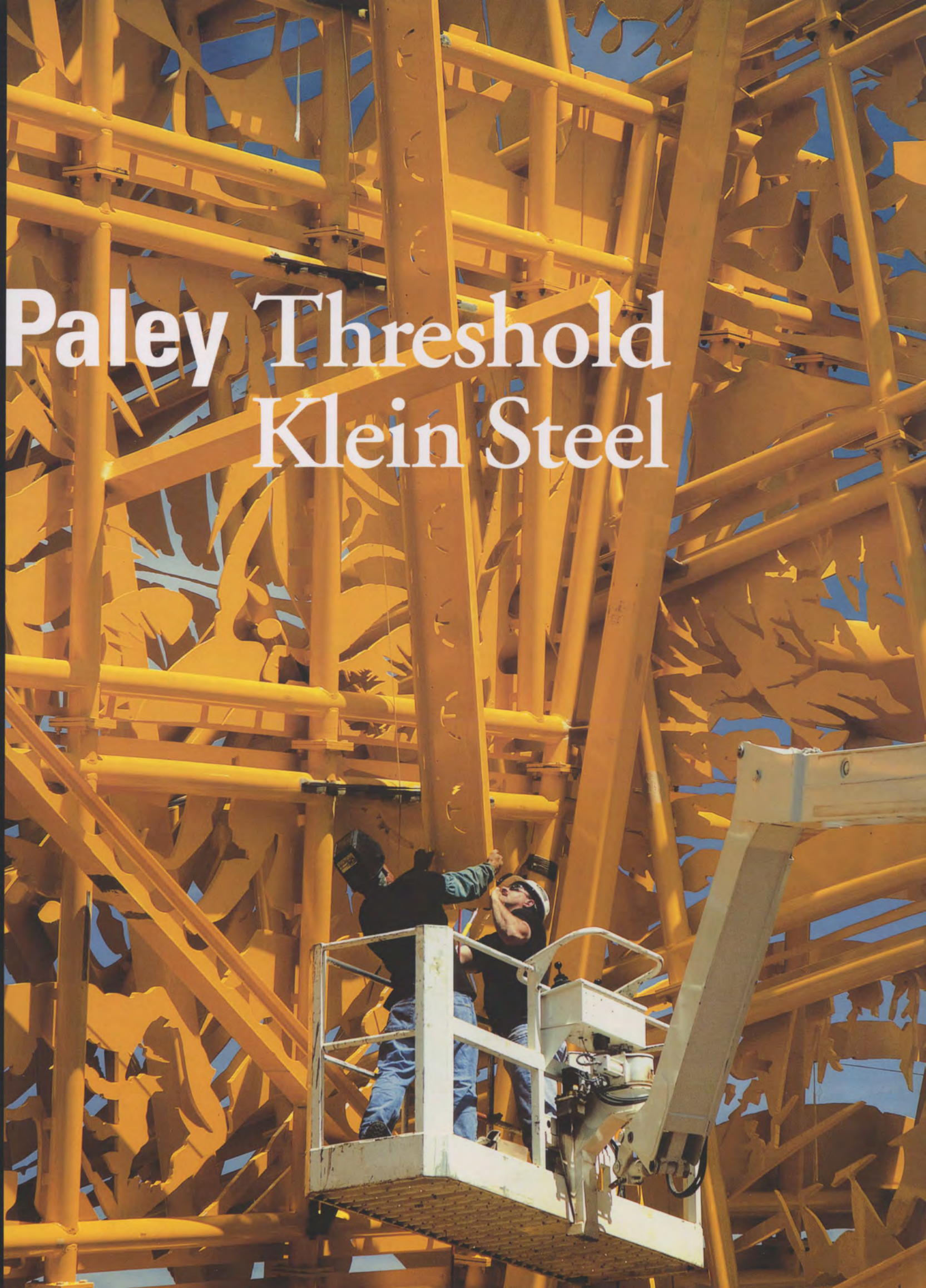




**The Metalwork of
ALBERT PALEY**



Albert Paley Threshold Klein Steel





EYE WASH STATION

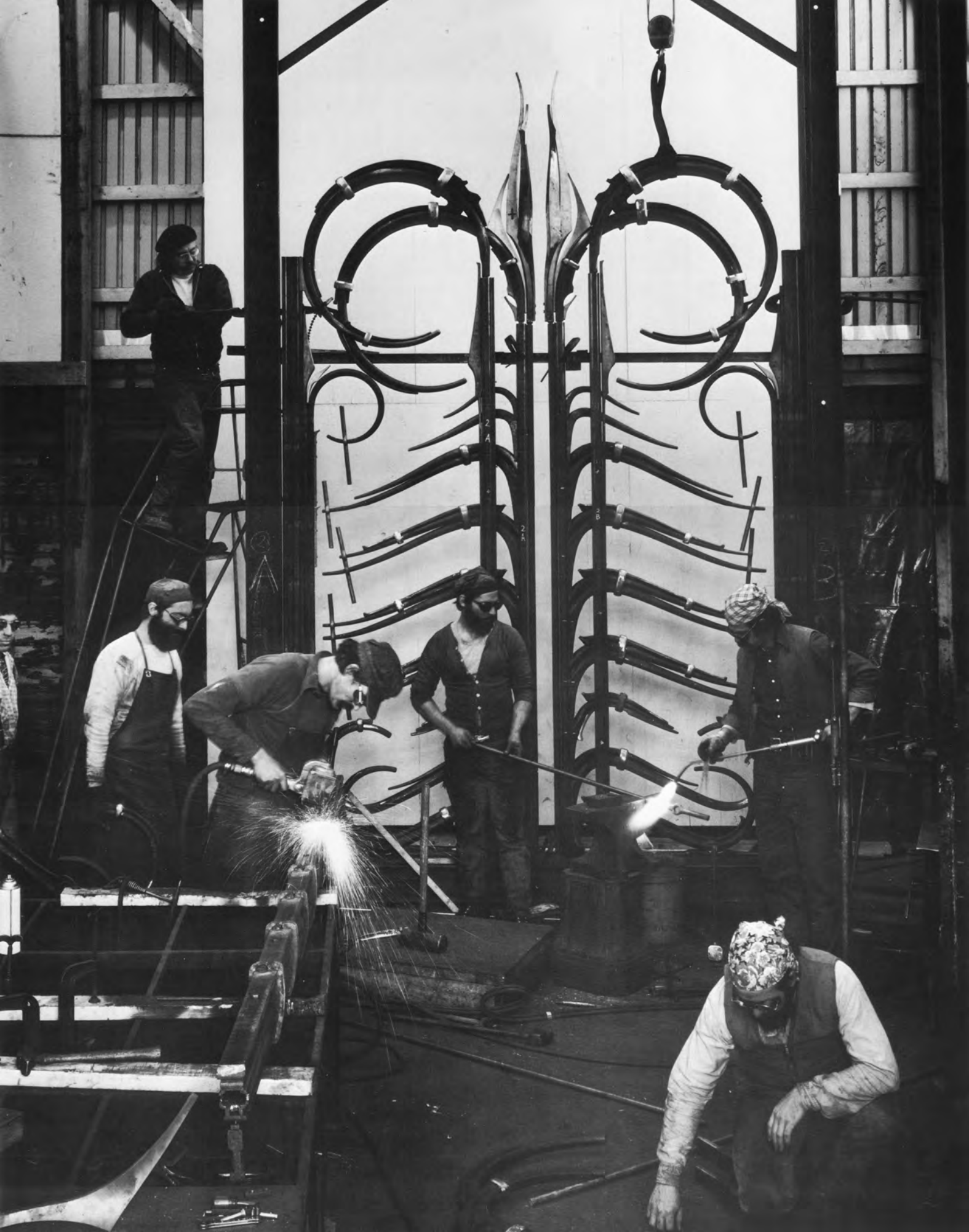


PALEY'S PROJECT 2019



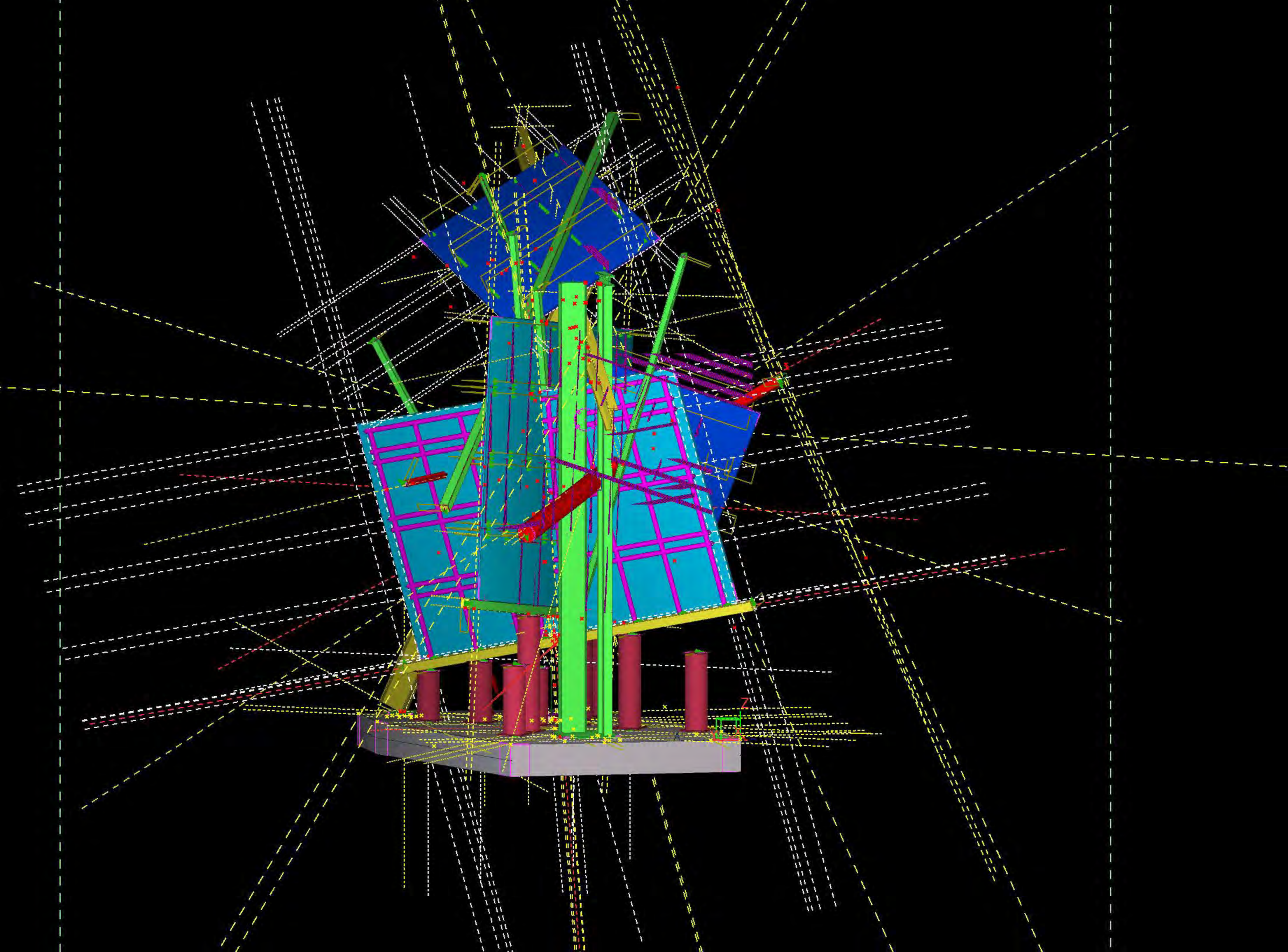
KUNST
aus dem
FEUER

JULIUS HOFFMANN VERLAG STUTTGART











A close-up photograph of a large, complex industrial machine, likely a steam engine or a similar historical engine. The image shows various metal components, including a large gear with many teeth, a smaller gear, and various shafts and bolts. The lighting is bright, highlighting the metallic surfaces and the intricate details of the machinery. A black rectangular box is superimposed over the center of the image, containing the title and author's name in white text.

Albert Paley Reconfiguration

Lela Gilbert