

[RIT PROGRAM IN FOCUS]

This program has strong discipline-specific coursework that is a good match for RIT students.

Study Abroad for Industrial Design & Interior Design Majors Nuova Accademia di Belle Arti (NABA) Milan, Italy (SAI)



Why study industrial & interior design in Milan with SAI:

- Milan is globally recognized as an **international center of design excellence**.
- Milan's **museums, galleries, showrooms, exhibitions** and events contribute to a culturally lively and dynamic environment, giving you opportunities to be inspired around every corner.
- You'll **learn from instructors who are leading artists, professionals and designers** working in Milan.
- Make your creative ideas come to life in NABA's state-of-the-art labs including a textile library, textile design lab, **model-making lab, digital media lab, and 3D design lab**.
- Experience **Milan design week in April**, an international exhibition of furniture and interior design elements, design events, and announcements of new collections that will shape the industry for the next year.

*No previous Italian language required. Program is taught in English.
Must have 2.5 GPA or above to apply.*

Milan is known for its highly crafted products that are contemporary, creative and innovative.



COURSES

These NABA courses are typically offered for fall or spring semester and have been pre-approved for RIT equivalents. Students typically take 12 to 18 credits.

** indicates course is also offered on NABA summer program*

NABA COURSES	APPROVED AS RIT COURSE
• Product Design I*	• IDDE 201 Sophomore ID Studio I
• Product Design II*	• IDDE 302 Junior ID Studio II
• Packaging Design	• Studio 100 Studio Elective -or- • IDDE 302 Junior ID Studio II -or- • NMDE 303 New Media Design Interactive III
• Exhibit Design	• IDDE 302 Junior ID Studio II -or- • INDE 302 Exhibition and Merchandising Design
• Experience Design	• IDDE 302 Junior ID Studio II -or- • INDE 302 Exhibition and Merchandising Design -or- • NMDE 303 New Media Design Interactive III
• Interior Design II*	• Studio 100 Studio Elective
• Illustration	• ILLS 206 2D Composition and Color
• Italian Design History	• ARTE 100 Art History Elective -or-
• History of Fashion & Costume	• INDE 346 History of Architecture, Interiors & Furniture II
• Design Methodology	• NMDE 303 New Media Interactive III
• Digital Illustration I*	• ILLS 219 Digital Illustration I
• Art History	• ARTH 550 Topics in Art History
• Fashion Design	
• Visual Design*	• Free or Program Electives
• Digital Illustration II	
• Visual Merchandising*	

NABA has more course offerings that you may also choose from. Any course you plan to take will go through the RIT study abroad course pre-approval process to ensure it will count towards an equivalent RIT course.

Program Cost

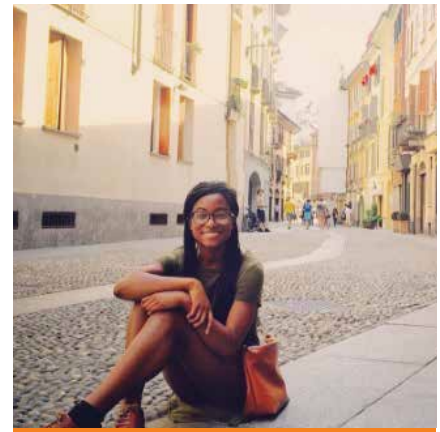
RIT financial aid and scholarships may be used towards study abroad program costs.

For current SAI program costs, visit: www.saiprograms.com/milan/naba/.

Cost listed on the SAI website is an estimate for research/informational purposes only. The RIT Education Abroad office will provide you with a detailed budget worksheet outlining ALL of your expected costs. Take the budget worksheet to your financial aid advisor to determine how your RIT financial aid and scholarships may apply.

Scholarships

- SAI Scholarships – saiprograms.com/admissions-aid/scholarships
- Gilman Scholarship – application open to students who receive Pell Grant funding gilmanscholarship.org
- RIT School of Design Scholarship - application deadline yearly in mid-October.
Email Alex Lobos, School of Design Director (alex.lobos@rit.edu)
- Talk to your study abroad advisor about other scholarship options.



To Apply:

1. Go to studyabroad.rit.edu and login to the **Compass** (application database) and search for NABA Milan.

2. Meet with study abroad advisor Roseanne Hernandez rit.edu/global/AdvisorMeeting

Plan 6 months to a year in advance to ensure proper academic and financial planning.



General RIT study abroad deadlines:

Applying for **Fall** semester programs: March 15th

Applying for **Spring** semester programs: October 1st

Applying for **Summer** programs: March 15th

Note that the SAI NABA application deadline may be different. Visit saiprograms.com/milan/naba/ for SAI deadline information.