

A History of Leadership in Deaf Culture

Patricia A. Mudgett-DeCaro, M.S./C.A.S.
Vicki T. Hurwitz, M.S.

PEN-International
2006 Summer Leadership Institute
Herstmonceux Castle in East Sussex, England

Introduction

- Family backgrounds: leaders
- What does a leader do?
- Stories and examples of different leaders

Who are We?

□ Patricia

- One of the few hearing in a large Deaf family of leaders
- Learned what deaf persons **CAN DO** - not what they can't do
 - Let me show you these leaders.

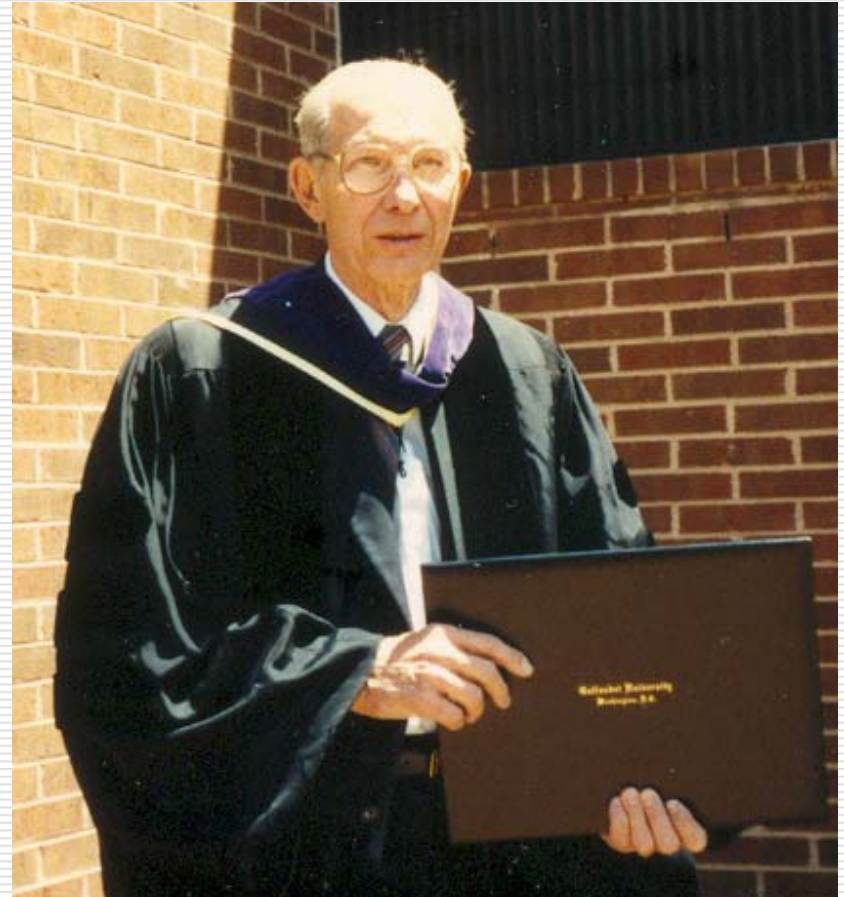
Grandfather and Great Uncle

- ❑ BA Gallaudet
(late 1800s)
- ❑ Teachers
- ❑ Texas School
for the Deaf
- ❑ Auditorium named
after Great Uncle



Uncle

- ❑ BA Gallaudet
- ❑ MA in Rehabilitation
- ❑ Doctorate American University (first Gallaudet graduate to earn one)
- ❑ Dean of Students at Gallaudet and Head of the Counseling Center



Parents

- ❑ BA Gallaudet (1929 & 1932)
- ❑ MA University of Illinois (1950s)
- ❑ Teachers at Illinois School for the Deaf
- ❑ Artists/Drama Club and Scouts
- ❑ State and National Officers in Deaf Organizations

Parents: David & Grace Mudgett with Pat



Who are We?

□ Vicki

- Only deaf member in family
- Married to Alan Hurwitz also deaf

Remember us?

- Brief review of last Monday's presentation on "The Making of Deaf Leaders"

Vicki and Alan Hurwitz



CLAYTONIAN-TRIBUNE

Teen-agers Who Will Dance for Charity



From left to right: Carolyn Berger, Roslyn Nissenbaum, Terry Brashear, Patricia Donohue, Barbara Barrett, Suzy Clasquin, Marilyn LaBell, Jill Heiman, Vicki Bernstein, Pamela Pe and Marilyn Berger.

What Does a Leader Do?

- ☐ Serves as a role model
- ☐ Influences others in a positive way
- ☐ Is productive, leads, encourages, motivates
- ☐ May do research...
- ☐ May be involved with politics...
- ☐ May create a new product...
- ☐ May be the first person to do some job ...

Careful: Leaders can hurt

- ❑ Leaders are powerful.
- ❑ Their opinions, what they say, and what they do can hurt others or can hurt the overall goal.
- ❑ Leaders must think carefully about the effects of what they say and do!

Stories

☐ Edith Fitzgerald

- Education

☐ Ada James

- Politics

☐ Claudia Gordon

- Human Rights

Edith Mansfield Fitzgerald

(Deaf or Hard-of-Hearing) 1877-1940



Leaders in the Deaf Community

- ☐ Can be Deaf
- ☐ Can be Late-deafened
- ☐ Can be Hard-of-Hearing
- ☐ Can have a CI
- ☐ Can be oral deaf

Ada James

(Deaf) 1876-1952



Claudia Gordon

(Deaf)

☐ Video Clip

Leaders for Whom?

Does a Deaf leader always work
for Deaf issues only or for the
larger society Deaf and Hearing?

???????????

- ☐ Deaf educators/Deaf organizations/Products such as
TTY for Deaf persons/lawyer for Deaf persons
- ☐ Researchers in science/hotel manager/doctors

Stories

- Juliette Gordon Low

- Founded Girl Scouts

- Patti Lago-Avery

- Leader for persons with Ushers Syndrome

Juliette "Daisy" Gordon Low

(Late Deafened) 1860-1927



Overcoming Adversity



Patti Lago-Avery's story

- ❑ Hearing loss in sudden drops
- ❑ Usher's Syndrome

"My broken spirit..."

"I spent 6 months interviewing ... for different types of hospital careers.

Everywhere I went I was told this was not a job that a deaf person can do.

Of course with my broken spirit, I believed them."

“I overcame!”

“ I decided that I would not let anyone else try to control my decisions, but I must find the strength to follow my heart.

And this is exactly what I did.”

Patti Lago-Avery today

- ❑ Long career as counselor for students who are deaf, hard-of-hearing, and deaf with secondary disabilities
- ❑ Presenter on deaf/blind issues: local, national, and international
- ❑ Member of the Board of the American Association for the Deaf Blind

Summary

- ❑ Leaders are those who help to change things – as role models or directly.
- ❑ Leaders can be Deaf, Late-Deafened, or Hard-of-Hearing.
- ❑ Leaders can influence Deaf persons directly or all of society itself.

Homework for your presentation!

- ☐ What were your goals while you were growing up?
- ☐ Who are your country's deaf leaders?
- ☐ Based on Alan's presentation on "*Characteristics of Successful Deaf Leaders*," identify characteristics of your deaf leaders.

Questions? Comments?

- ☐ Please complete evaluation forms before you leave.
- ☐ Thank you so much.