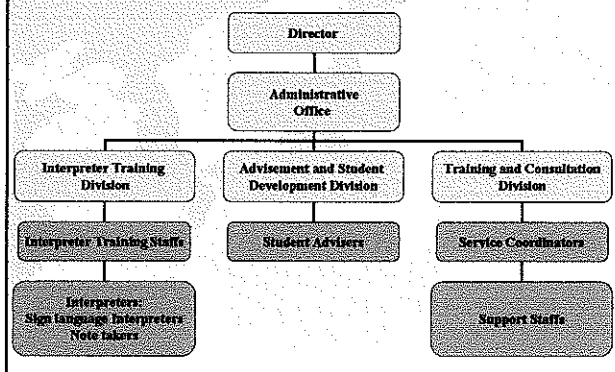
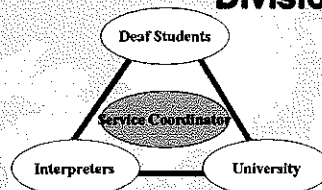


Kanto Support Center for the Deaf and Hard of Hearing Students

Divisions and Staffs



Training and Consultation Division



- Evaluation: Type of Deaf students, Communication methods, Resources, Relationship between university and Deaf students...
- Advising: Notetakers sending system, Notetakers training program, Networking...
- Interpreting service

Interpreter Training Division

- Instructor sending service;
 - Notetakers training program in Univ.
 - Notetakers club in community
 - Sign language interpreting center
- Curriculum development
- Instructors training program
- Interpreter's workshop

Advisement and Student Development Division

- Counseling for Deaf students
- Advisement
 - How to: Use student services
 - Negotiate with University
 - Communicate hearing students
 - Educate hearing people
- Information
 - Deaf related organization
 - Interpreting service

Forum on Higher Education for Deaf and Hard of Hearing Students



- Discuss on:
- New topics on Deaf student services
 - New program models
 - Further professional development

Program Models

	1	2	3	4	5
Service Provider	No	Student's Club	General Office	Special Committee	Support Center
Coordinator	No	Student's Club	General Office	Special Committee	Support Center
Interpreter	class mates	Club Member	Volunteer	Interpreter	Certificated Interpreter
Payment	No	Transportation	Part time job	Part time Interpreter	Full time Interpreter
Training Program	No	Study Group	Short term	Long term	Regular course
	Informal			Formal	

<http://www6.plala.or.jp/haken/index.html>