



Education levels in Russia

General education:

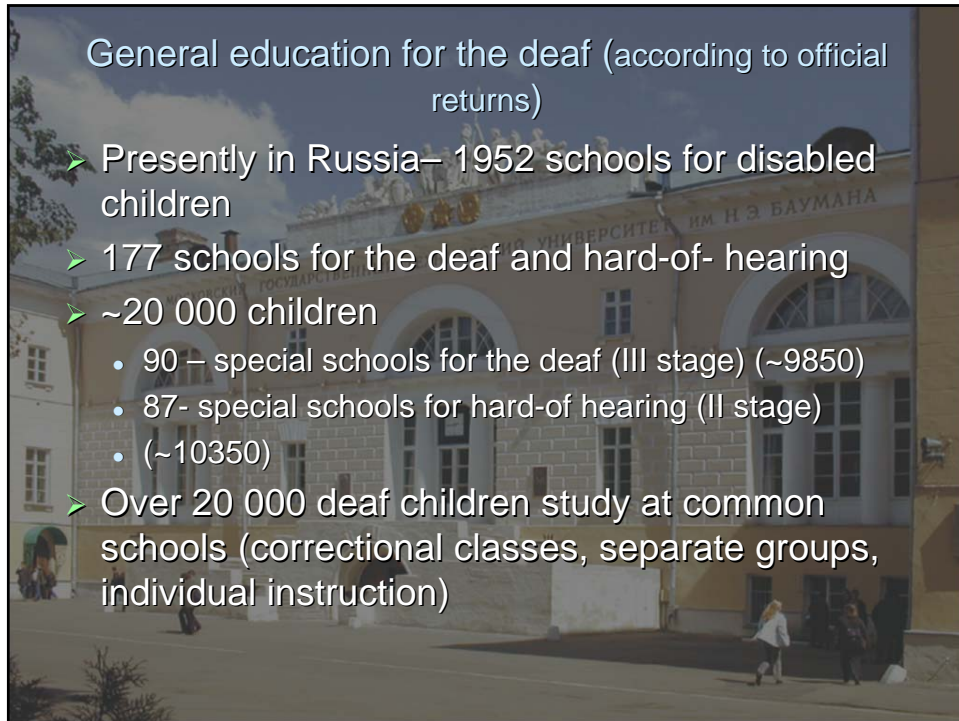
- primary general
- basic general education
- general (full) secondary education

Professional education:

- Primary professional education (professional schools),
- high professional education (colleges, technikums),
- higher professional education (university, institute);
- After-Graduate-Education)
- Training and retraining

Structure of Russian Education System organization

- **Federal:** higher professional education – universities, institutions,
- **Regional:** high (secondary) professional education – colleges, technical schools,
- **District:** basic and general education



General education for the deaf (according to official returns)

- Presently in Russia– 1952 schools for disabled children
- 177 schools for the deaf and hard-of- hearing
- ~20 000 children
 - 90 – special schools for the deaf (III stage) (~9850)
 - 87- special schools for hard-of hearing (II stage) (~10350)
- Over 20 000 deaf children study at common schools (correctional classes, separate groups, individual instruction)



Bauman Moscow State Technical University

- The Bauman Moscow State Technical University was founded in 1830
- Since foundation, an original system of the educational process organization was developed at the University that combined deep theoretical studies with well-handled training of intending engineers in first-class workshops and laboratories. This system won international recognition as **“Russian method of engineering education”**



Educating for the deaf at BMSTU

- Traditions of higher education space open for the disabled people was being formed starting from 1934 on.
- **Bauman University was first in the world general-educational institution** where the engineering education programs for the deaf and hard-of-hearing people were successfully realized and continue to develop efficiently.

Development of special educational programs for the deaf and hard of hearing people at BMSTU

Stages of BMSTU programs development:

- 1934-1992:
- A stage of **inclusive education**
- It was an **exclusive program** in the entire system of the USSR higher education (small groups with sign language interpreters).

1992-1994

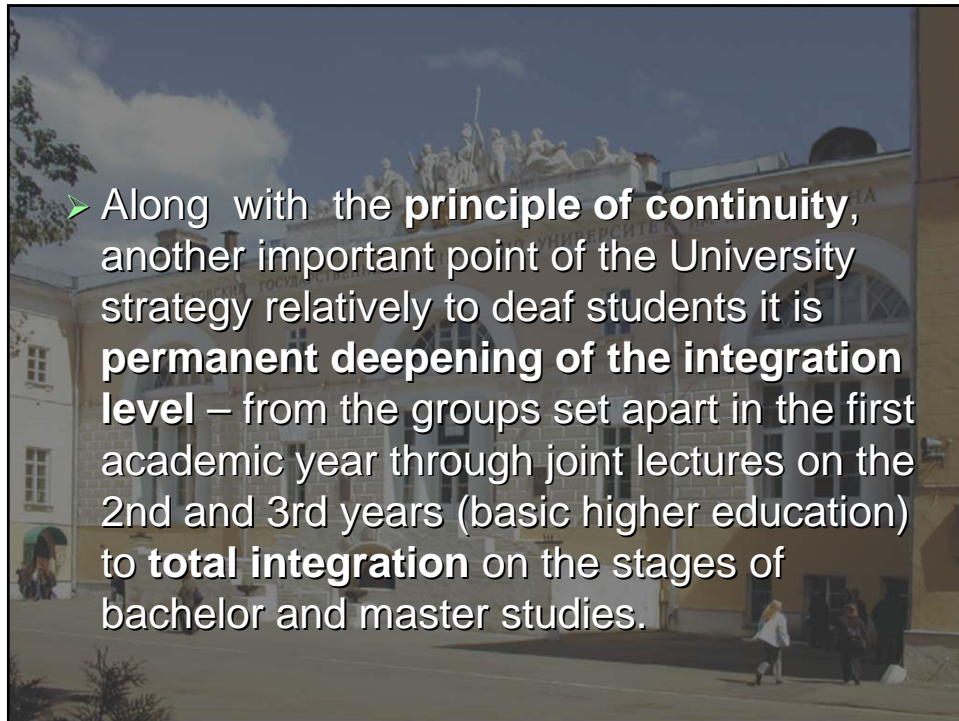
- Next stage contained the elaboration of **special educational programs** and their development within the framework of special social governmental awards to create a **Head Educational-Research and Methodical Center of Professional Rehabilitation** for disabled people under the aegis of the Russian Ministry of Education (1994)

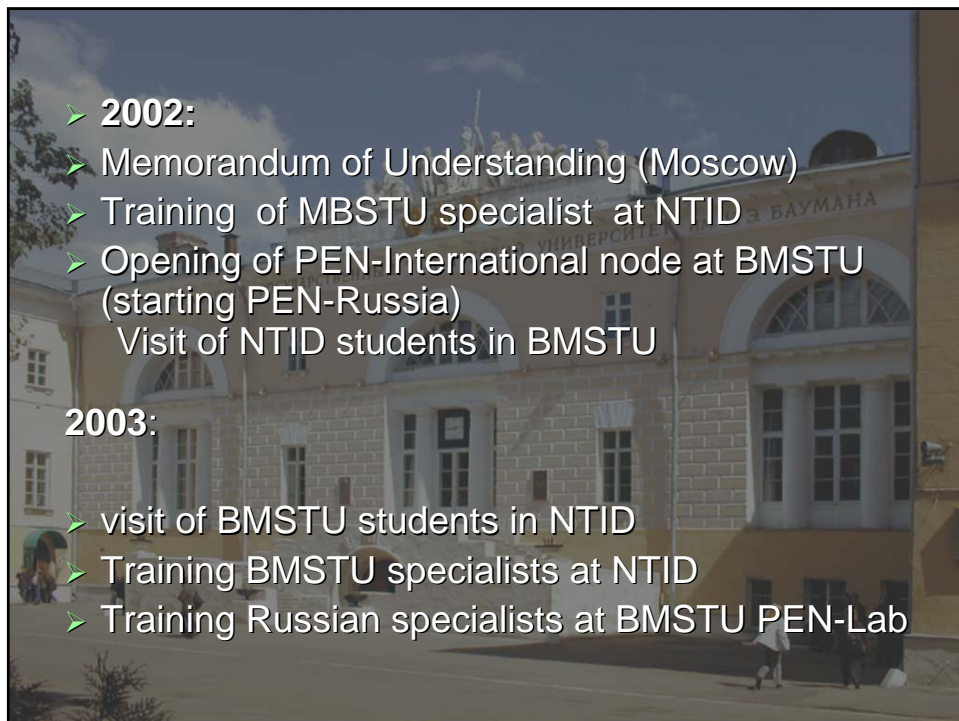
- Realization and development of these programs was carried on at the Bauman University basing on new legislative basis created in the country that provided an implicit exercise of the disabled people ' rights
- (special acts "Education in the Russian Federation", "Social Protection of Invalids in the RF ", "Higher and After-Graduate-Education in the RF")

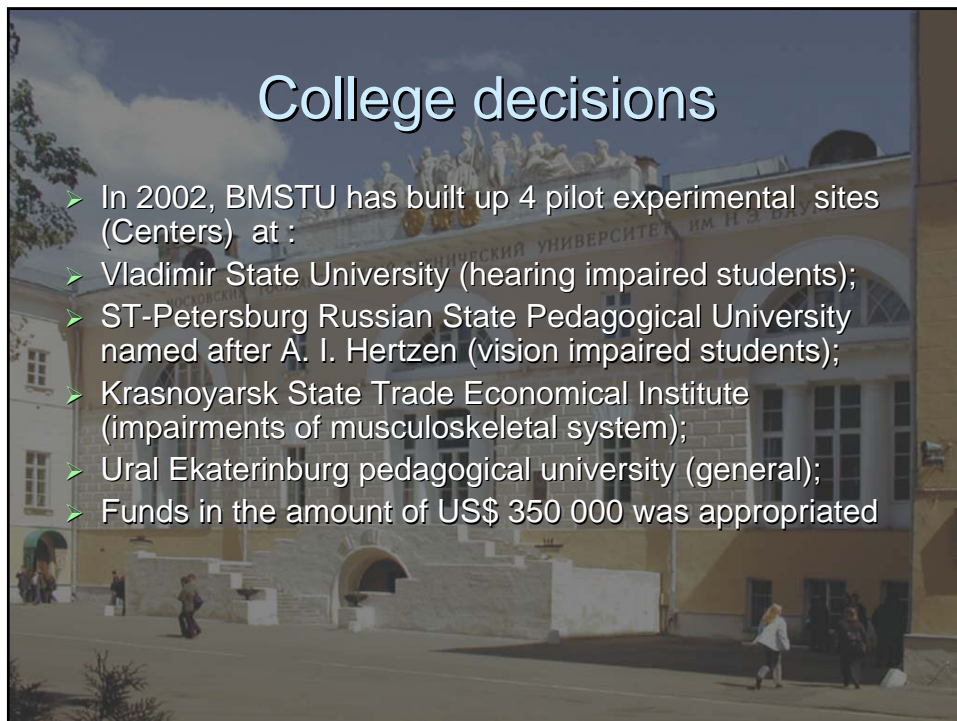
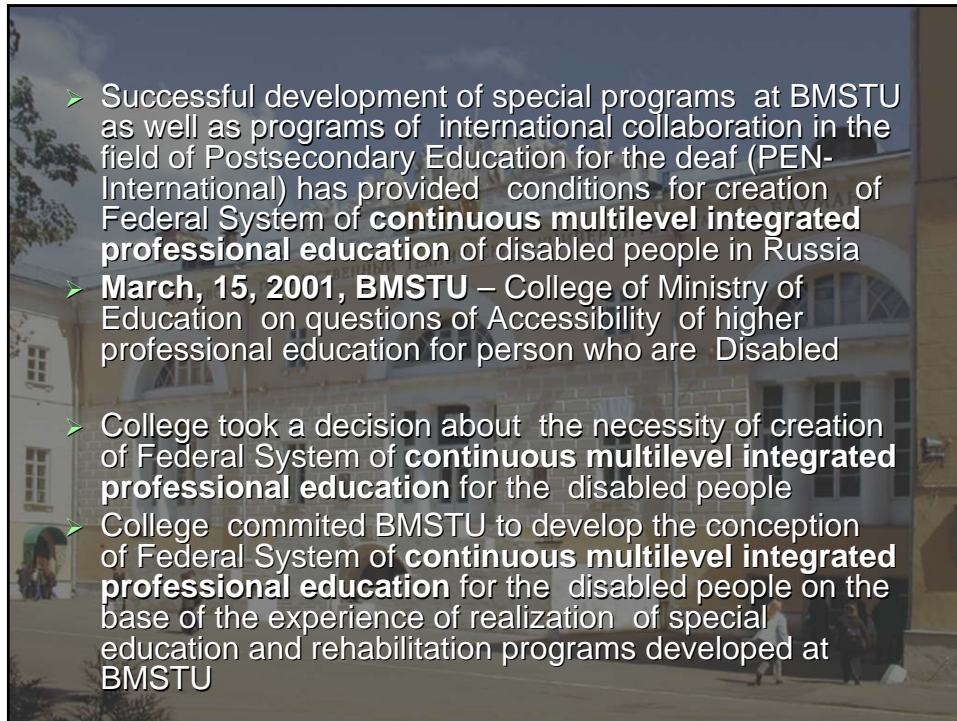
Since 1994

- The stage of development of **special educational-rehabilitation programs of continuous multilevel higher engineering professional education** of deaf people (basic higher education, bachelors' and masters' training and after graduate programs)
- Since 1998 – simultaneously, Center has become Moscow (Regional) Center of Professional rehabilitation for the Deaf

- Content of these students' **special educational-rehabilitation programs** is aimed to learning special social technologies transferring invalids from the category of **passive consumer of social services to active partners** in professional and social spheres, besides gaining professional knowledge.



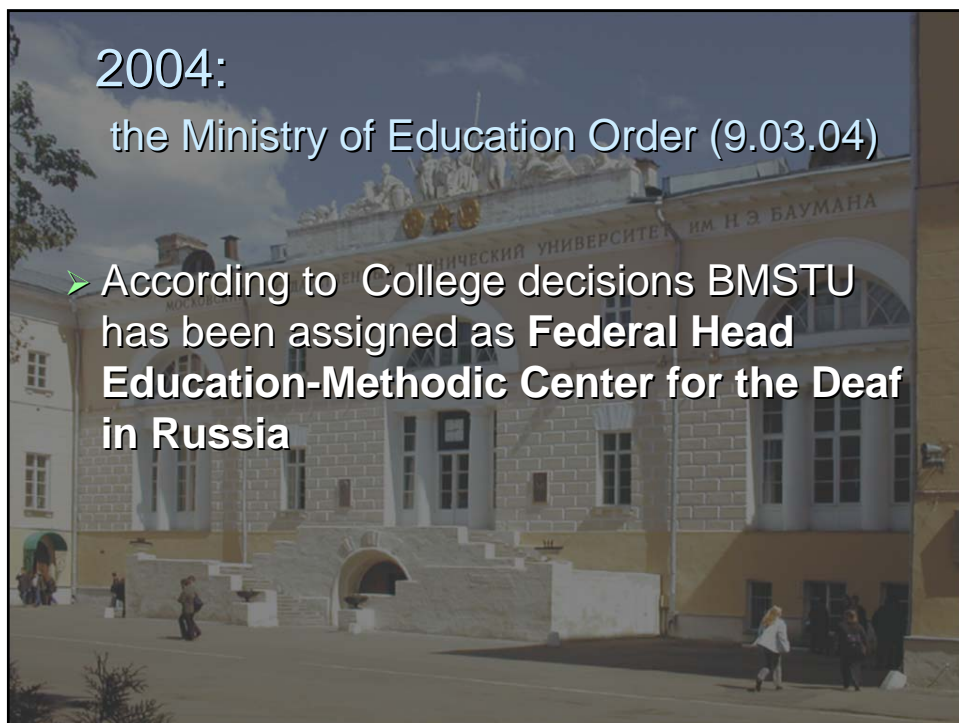
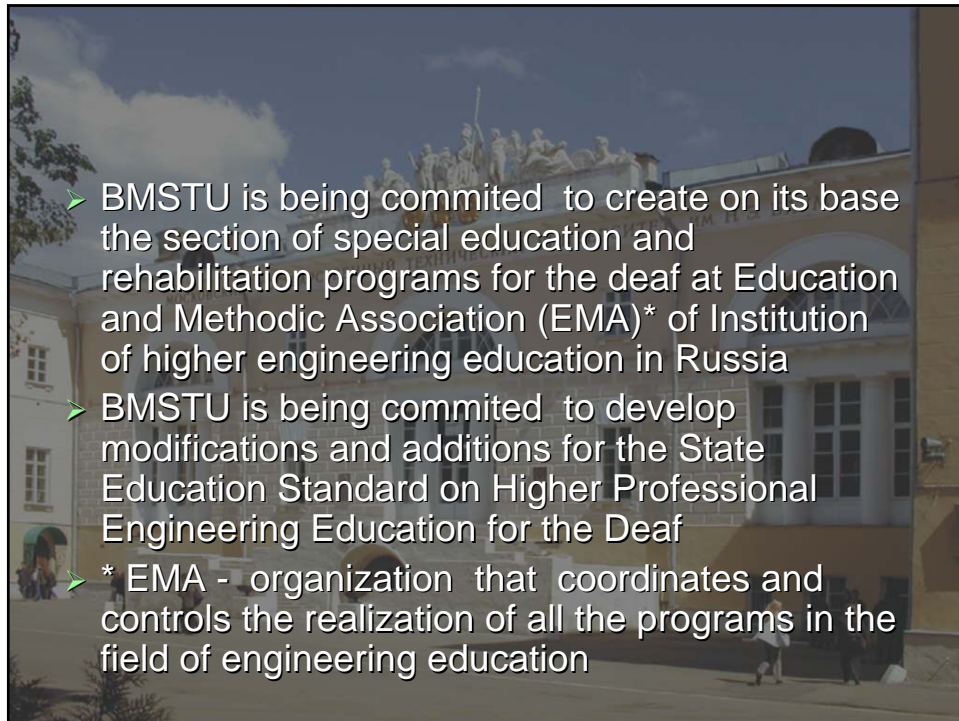


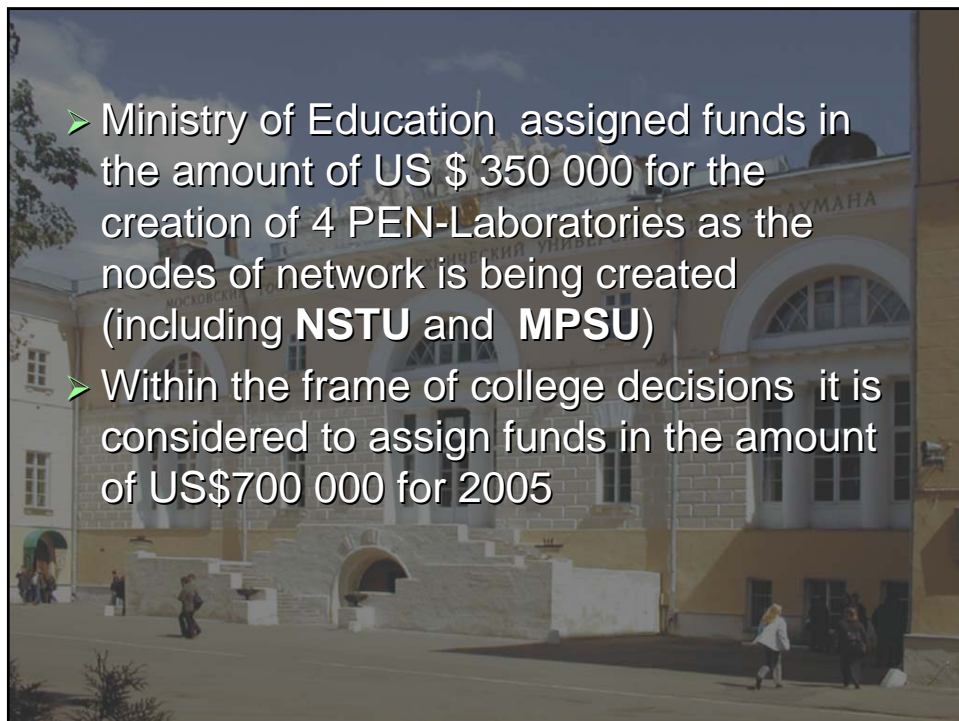
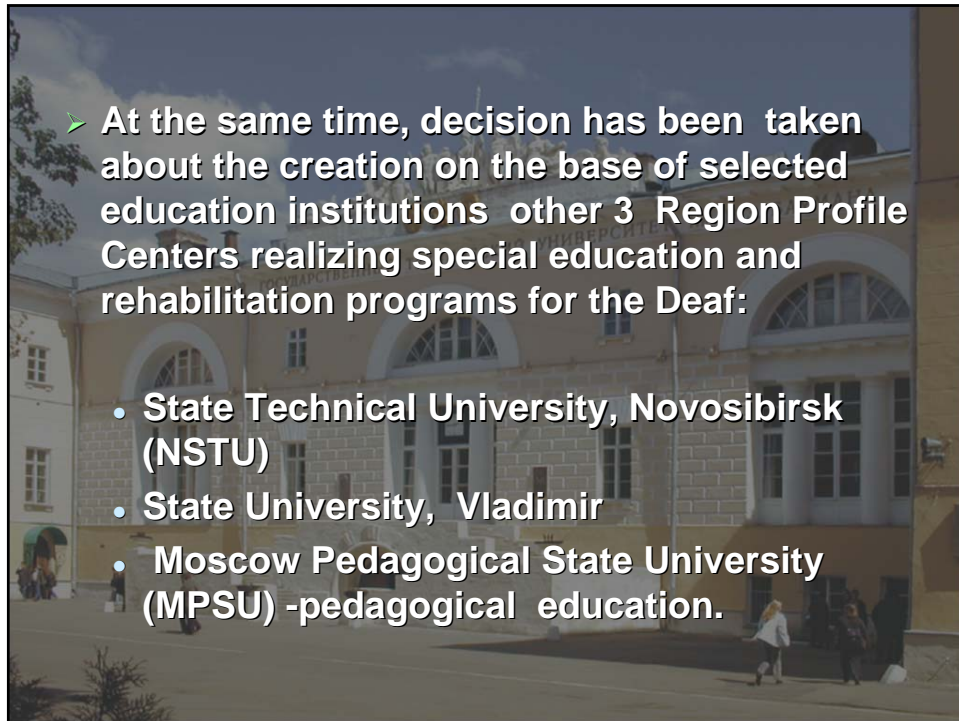


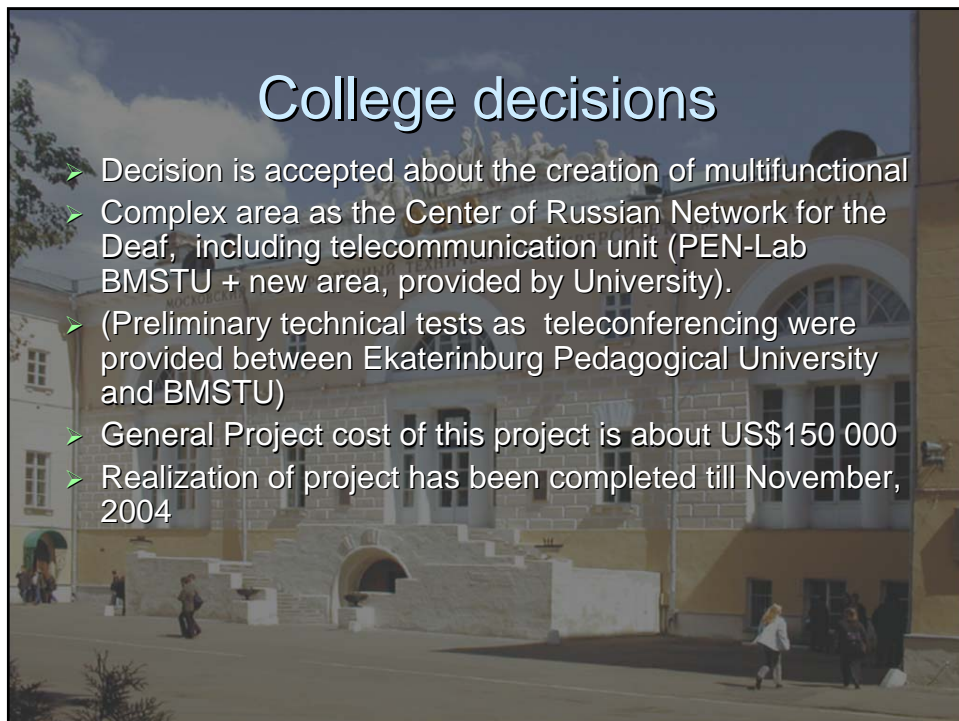
College decisions

- 8 pilot sites has been built up at colleges
- Unified software and hardware complexes like at BMSTU PEN lab were supplied there by BMSTU to meet special (education-rehabilitation) needs for person who are disabled
- So BMSTU has become an exporter of PEN-International technologies
- So there is starting of building of Infrastructure of Professional Education System for disabled person (in general) integrated into common education space is being created in Russia

- June, 24, 2003: College of Ministry of Education on the Development of Professional Education for person who are Disabled took decisions:
- About the creation of Federal System of **continuous multilevel integrated professional education** for the disabled people within common space of technical university on the base of conception developed at BMSTU
- College took into account the BMSTU experience within the frame of PEN-International, taking as the base of this infrastructure the networking (promotion of PEN-International principles on a national scale).







Goals and tasks of PEN-Laboratory as the node of PEN-International and PEN-Russia

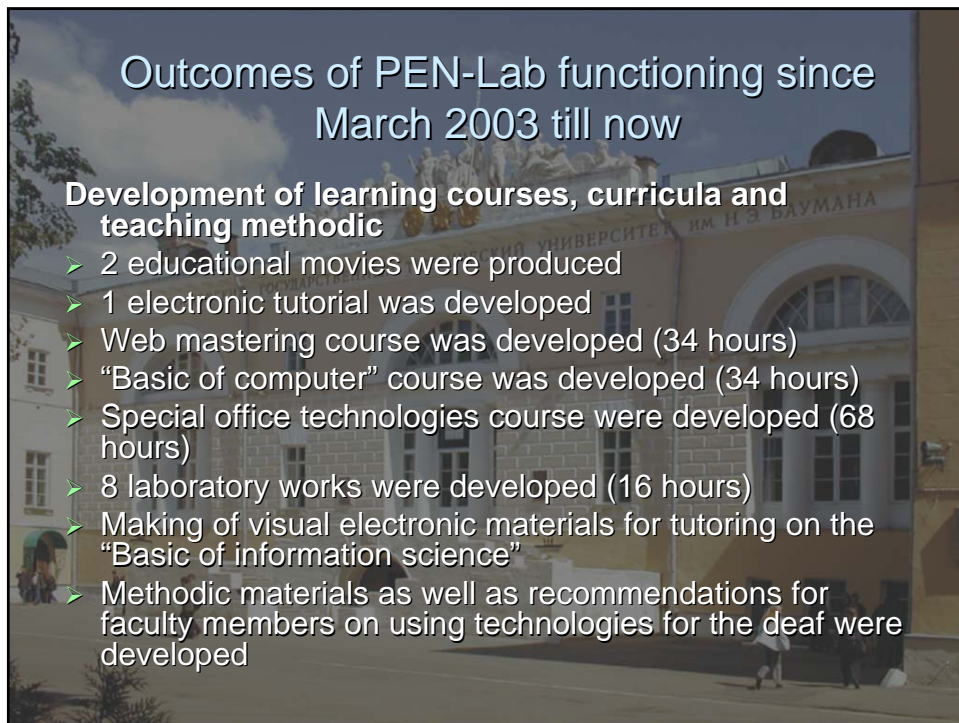
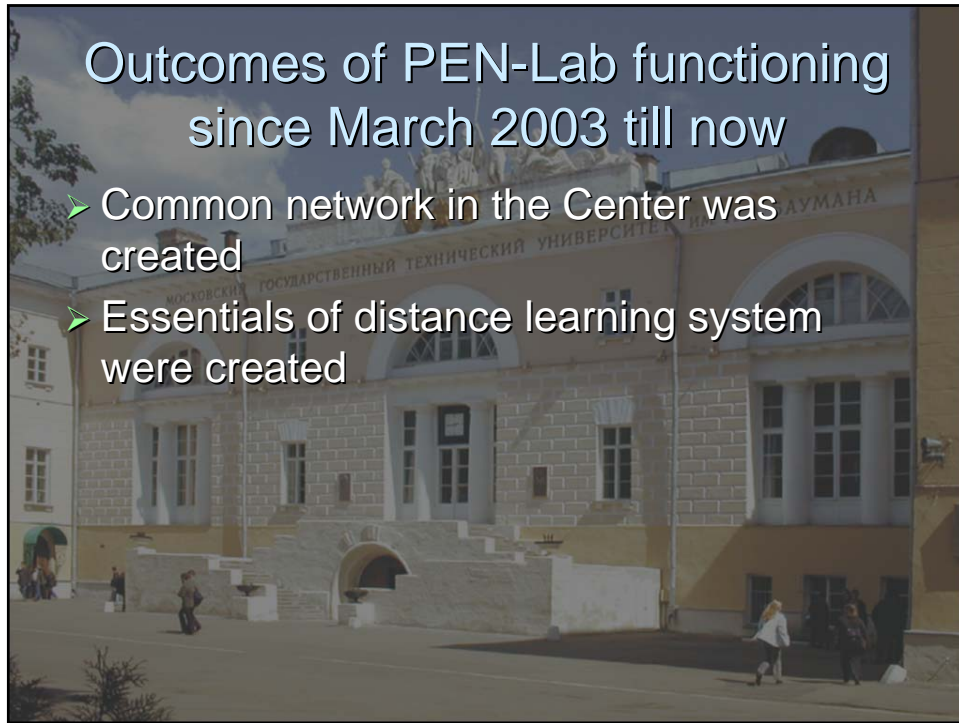
According to PEN-International goals and tasks of PEN -Laboratory are:

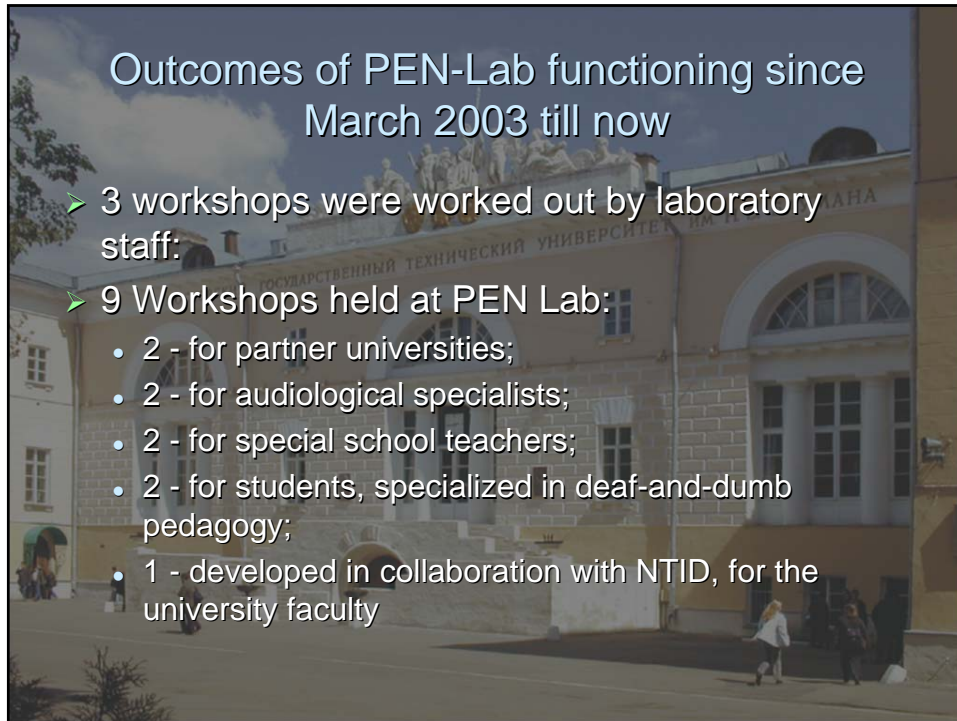
- Development, management and support of studies based on new technologies
- Development of learning courses, curricula and teaching methodic
- Development of methodic materials
- Development and implementation of network technologies
- Development and implementation of distance learning technologies
- Development and implementation of special software and multimedia products
- Personnel training and development of teachers' skills
- Co-operation with partner organizations (Russian and foreign)
- Using the Lab as education and production complex
- Investigation and assessment of outcomes

Outcomes of PEN-Lab functioning since March 2003 till now

Formal and informal Course Use:

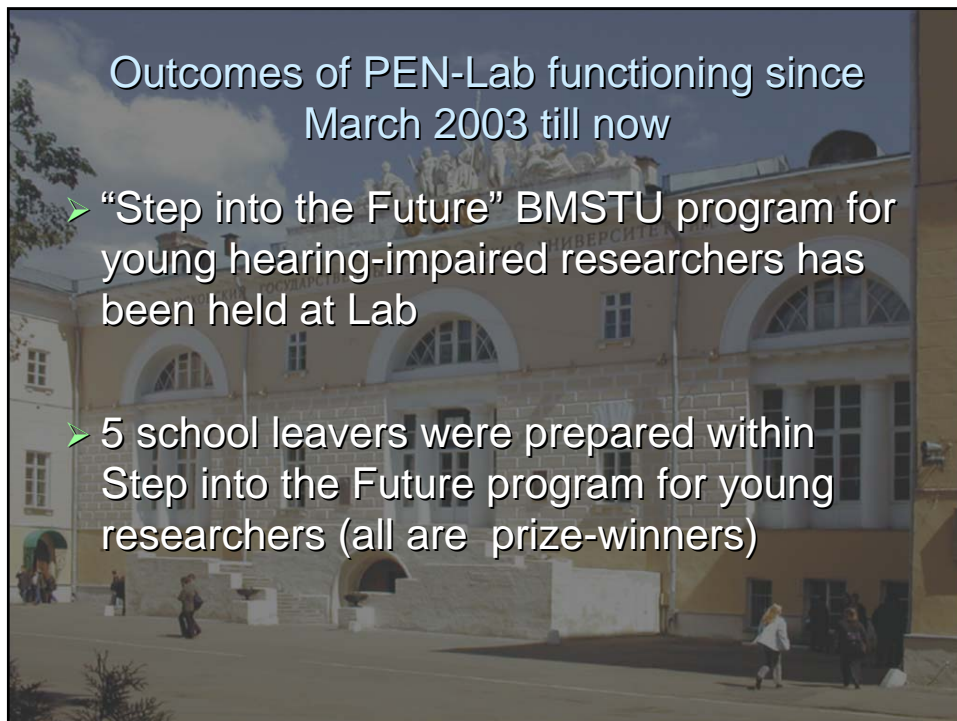
- 35 hours of formal lessons per week according to student curriculum.
- 7 hours per week were assigned for teachers' consultation (to teach them how to use technologies)
- 12 hours per week - for students' self-instruction.
- 5 hours per week - for tutoring on the "Basic of information science"



A photograph of a large, multi-story building with a classical architectural style, featuring arched windows and a prominent entrance. The building is identified by text on its facade as the State Technical University of Moscow (BMSTU).

Outcomes of PEN-Lab functioning since March 2003 till now

- 3 workshops were worked out by laboratory staff:
- 9 Workshops held at PEN Lab:
 - 2 - for partner universities;
 - 2 - for audiological specialists;
 - 2 - for special school teachers;
 - 2 - for students, specialized in deaf-and-dumb pedagogy;
 - 1 - developed in collaboration with NTID, for the university faculty

A photograph of a large, multi-story building with a classical architectural style, featuring arched windows and a prominent entrance. The building is identified by text on its facade as the State Technical University of Moscow (BMSTU).

Outcomes of PEN-Lab functioning since March 2003 till now

- “Step into the Future” BMSTU program for young hearing-impaired researchers has been held at Lab
- 5 school leavers were prepared within Step into the Future program for young researchers (all are prize-winners)

