

R·I·T

UPPERCLASS HOUSING

2008
2009



The convenience of campus... the advantages of upperclass housing

Apply for your RIT housing at <http://housing.rit.edu>.



RIT transfer and graduate students

Transfer and graduate students are assigned RIT housing on a space-available basis following the postmark date of the admission deposit and the submission date of the housing contract. Housing is not guaranteed. Some transfer and graduate students will be placed in temporary housing initially (e.g., local hotels, or fraternities and sororities). However, during the summer, fall and winter quarters, students in temporary housing will be relocated to permanent RIT housing.

Apply for your RIT housing

RIT housing contracts are online. Go to <http://housing.rit.edu> to complete your housing contract. Peruse this book for the many diverse housing options available at RIT prior to completing your online housing contract.

A paper copy of a housing contract is provided for you to complete if you are unable to apply online. Please do not submit a paper copy of the housing contract if you have applied online.

Housing Operations will communicate with you via your RIT e-mail address. You are responsible for establishing your RIT computer account immediately and checking it consistently. Go to start.rit.edu to establish your account.

Accommodations for students with disabilities and special medical needs

All requests for special housing based on medical or disability needs must be placed with the Office of Disability Services. Please note: severe allergies that cannot be effectively managed with medication are the only types of allergies that may qualify for a special housing accommodation. For fall quarter entrance, please submit the Application for Services for Students with Disabilities by June 1. It is important that students contact the Office of Disabilities Services as early as possible by calling (585) 475-7804 (voice/TTY) to discuss their situation and needs.

Residence Halls

RIT's suburban campus is designed with all the residence halls clustered together on the eastern side of campus. The halls are joined to the academic side of campus by the "Quarter Mile" walkway—meaning no place on campus is more than a 15-minute walk.

What's available

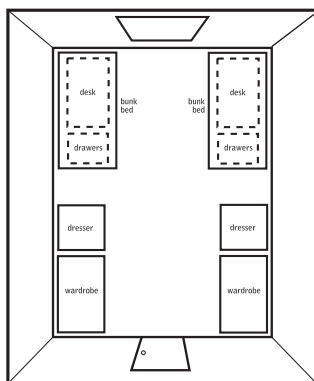
- ♦ double rooms
- ♦ single rooms (limited)
- ♦ triple rooms
- ♦ quads

Residence Hall facts

- ♦ all residence halls are locked 24/7 and require card access for entry
- ♦ all rooms have a dedicated Ethernet connection for each resident
- ♦ free standard cable
- ♦ free local phone service
- ♦ furnished and carpeted*
- ♦ variety of lifestyle options
- ♦ special-interest houses
- ♦ living-learning communities
- ♦ honors housing
- ♦ flexible meal plans
- ♦ all residence halls are alcohol-free and smoke-free
- ♦ free laundry service



RESIDENCE HALLS



Room size and layout vary

Number of students required to occupy room

Single room	1
Double room	2
Triple room	3
Quad	4

RIT Inn & Conference Center

Located four miles from campus on West Henrietta Road, the RIT Inn offers upperclass students a premium living experience.

What's available

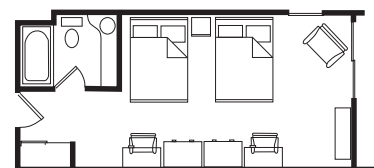
- ♦ Double occupancy rooms are completely furnished, includes a TV and private bath and shower

RIT Inn facts

- ♦ free shuttle service to campus
- ♦ reserved parking pass to lot of your choice
- ♦ all rooms have dedicated Ethernet connections for each resident
- ♦ flexible meal plans
- ♦ indoor pool, whirlpool, sauna, fitness center, and business center
- ♦ free local telephone service and free standard cable
- ♦ free on-site laundry room
- ♦ free light housekeeping service weekly
- ♦ café dining and gourmet coffee shop
- ♦ in-room-controlled air and heat
- ♦ smoke-free environment



RIT INN AND CONFERENCE CENTER



Number of students required to occupy room

1 Double Room	2
---------------	---

Colony Manor

Located on John Street across the road from Perkins Green, Colony Manor is within walking distance of the center of campus.

What's available

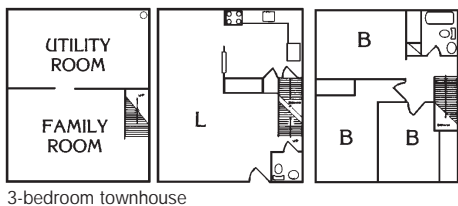
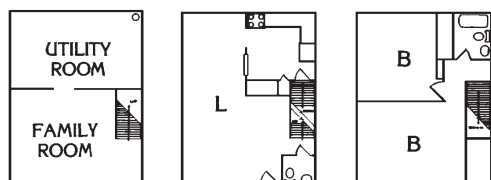
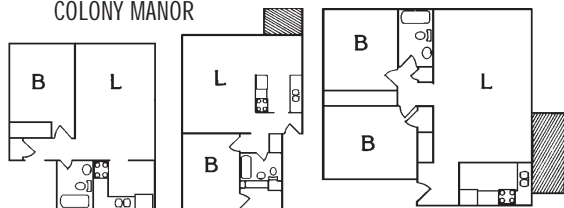
- ♦ one- and two-bedroom unfurnished apartments with kitchen, living room, and full bath
- ♦ two- and three- bedroom unfurnished townhouses with kitchen, living room, 1½ baths, and basement

Colony Manor facts

- ♦ all utilities are included in the rent
- ♦ all apartments have at least two dedicated Ethernet connections; one jack in each bedroom, one jack in living room
- ♦ free standard cable
- ♦ free local phone service
- ♦ basketball and volleyball courts
- ♦ smoke-free environment
- ♦ free on-site laundry facilities



COLONY MANOR



Number of students required to occupy room

1-Bedroom Lower	1 or 2
1-Bedroom Upper	1 or 2
2-Bedroom Apartment	4
2-Bedroom Townhouse	4
3-Bedroom Townhouse	4

Perkins Green

On the eastern edge of campus, Perkins Green is just a few minutes from the residence halls, academic buildings, Gracie's, and The Commons—making this an ideal location for students interested in obtaining campus meal plans.

What's available

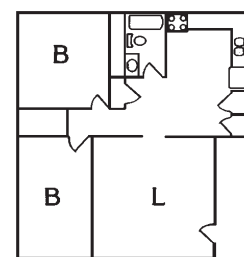
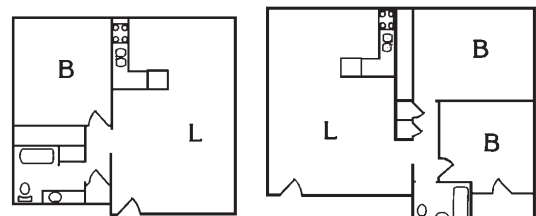
- ♦ one- and two-bedroom unfurnished apartments with kitchen, living room, and full bath

Perkins Green facts

- ♦ all utilities are included in the rent
- ♦ all apartments have at least two dedicated Ethernet connections; one jack in each bedroom, one jack in living room
- ♦ free standard cable
- ♦ free local phone service
- ♦ smoke-free environment
- ♦ free on-site laundry facilities



PERKINS GREEN



Number of students required to occupy room

1-Bedroom	1 or 2
2-Bedroom Apartment	4

Racquet Club

Located three miles from campus on East River Road in a country-like setting, Racquet Club is accessible to campus on the RIT shuttle bus route.

What's available

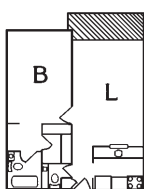
- ♦ one-bedroom unfurnished apartment with kitchen, living room, and 1½ bath

Racquet Club facts

- ♦ all utilities are included in the rent
- ♦ apartments have one dedicated Ethernet connection in the bedroom
- ♦ free standard cable
- ♦ free local phone service
- ♦ free laundry service on each floor
- ♦ smoke-free environment



RACQUET CLUB



Number of students required to occupy room

1-Bedroom Apartment	1 or 2
---------------------	--------

Riverknoll

Riverknoll is located on the west side of campus—just minutes from the academic buildings, academic computer labs, and the Café and Market at Crossroads.

What's available

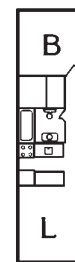
- ♦ one-bedroom unfurnished apartments with kitchen, living room, and full bath
- ♦ two- and three-bedroom unfurnished townhouses with kitchen, living room, and full bath

Riverknoll facts

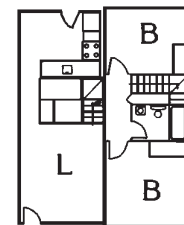
- ♦ all utilities are included in the rent
- ♦ Riverknoll is the closest apartment complex to the academic buildings in the center of campus
- ♦ free standard cable
- ♦ free local phone service
- ♦ no Ethernet connections
- ♦ smoke-free environment
- ♦ free on-site laundry facilities
- ♦ volleyball court



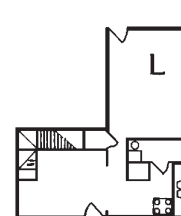
RIVERKNOLL



1-bedroom apartment



2-bedroom townhouse



3-bedroom townhouse

Number of students required to occupy unit

1-Bedroom Apartment	1 or 2
2-Bedroom Townhouse	3
3-Bedroom Townhouse	4

University Commons

University Commons is located on the west side of campus—this complex is just minutes from the heart of campus and offers suite-style living.

What's available

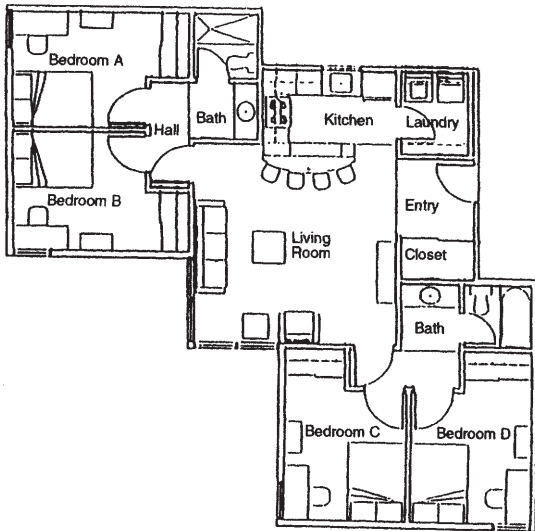
- ♦ four-bedroom suites with kitchen, living room, two full baths, and laundry room

University Commons facts

- ♦ each bedroom is assigned as a single room with the kitchen, living room, bathroom, and laundry room as a common space shared by residents
- ♦ all utilities are included in rent
- ♦ all suites have dedicated Ethernet connections; one jack in each bedroom, one jack in the living room
- ♦ free standard cable
- ♦ free local phone service
- ♦ furnished and carpeted*
- ♦ smoke-free environment
- ♦ electronic safety alarm system
- ♦ basketball court



UNIVERSITY COMMONS



Number of students required to occupy room

4-Bedroom Suite

4

Special Features

	Residence Halls	RIT Inn & Conference	Colony Manor	Perkins Green	Racquet Club	Riverknoll	University Commons
Contracts run Sept.–May	•	•	•	•	•	•	•
Computer connectivity**	•	•	•	•	•	•	•
Air conditioning***	•	•			•		•
Free standard cable	•	•	•	•	•	•	•
Shuttle bus service	•	•	•	•	•	•	•
Free laundry facilities	•	•	•	•	•	•	
Washer and dryer in suite							•
Furnished	•	•					•
Computer center	•	•					
Residence Life development staff	•	•	•	•	•	•	•
No security deposit	•	•	•	•	•	•	•
Reduced summer rent	•		•	•	•	•	•
Community programs and activities	•	•	•	•	•	•	•
End-of-quarter move out option	•	•	•	•	•	•	•
Electronic safety alarm system							•
Playground						•	
Basketball facilities			•				•
Volleyball court			•	•		•	
Grills and picnic area	•		•	•	•	•	•
Dishwasher and microwave							•
Stove and refrigerator			•	•	•	•	•
Indoor pool, whirlpool, sauna		•					
Fitness center		•					
Smoke free	•	•	•	•	•	•	•
Room service delivery		•					
Coffee bar	•	•					
Light housekeeping service weekly		•					
Television		•					

**Computer Connectivity

- Colony Manor Ethernet connection
- Perkins Green Ethernet connection
- Racquet Club Ethernet connection
- Riverknoll No direct connection
(RIT Housing Operations provides a credit of \$67/qtr/unit during the academic year to the student who holds the contract for Time Warner's Road Runner service.)
- University Commons Ethernet connection
- RIT Inn..... Ethernet connection

*** Bell, Ellingson, Gleason, Peterson, and Nathaniel Rochester Halls are air conditioned.

RIT's Expectations for Community Behavior

- ♦ RIT is a learning community where time, energy, and resources are directed toward learning and personal development.
- ♦ Members of the community live and work together to foster their own learning, as well as the learning of others, both in and outside the classroom.
- ♦ Within the community, members hold themselves and each other to high standards of personal integrity and responsibility.
- ♦ Individual members continually strive to exceed their personal best in academic performance and the development of interpersonal and professional skills and attributes.
- ♦ As a member of the community, each person continually conducts himself/herself in a manner that reflects thoughtful, civil, sober, and considerate behavior.
- ♦ As a member of the community, each person respects the dignity of all persons and acts to protect and safeguard the well-being and property of others.
- ♦ As a member of the community, each individual contributes to the continued advancement and support of the community, personally challenging behavior that is contrary to the welfare of others.
- ♦ Members of the community create a campus culture that values diversity and discourages bigotry, while striving to learn from individual differences.



Know what you are agreeing to

Read the Terms and Conditions for RIT housing before you complete and submit your housing contract.

Room/Suite/Apartment Sizes and Occupancy Requirements

*Sizes are approximate. All measurements given in feet.
Room size and layout vary.*

Residence Hall

Single room (limited)

100 sq. ft.– 155 sq. ft.
Required Occupancy 1

Double room

161 sq. ft.– 180 sq. ft.
Required Occupancy 2

Triple room

274 sq. ft.– 350 sq. ft.
Required Occupancy 3

Quad room

374 sq. ft.– 482 sq. ft.
Required Occupancy 4

RIT Inn & Conference Center

Bedroom 12 x 18
Required Occupancy 2

Colony Manor

1-bedroom apartment

Living room 13 x 18
Bedroom 10 x 13
Required Occupancy 1 or 2

2-bedroom apartment

Living room 10 x 22
Bedroom 10 x 13
Bedroom 10 x 11
Required Occupancy 4

2-bedroom townhouse

Living room 12 x 15
Dining room 9 x 14
Kitchen 8 x 8
Bedroom 11 x 13
Bedroom 12 x 16
Family room 13 x 19
Utility room 13 x 19
Required Occupancy 4

3-bedroom townhouse

Living room 12 x 17
Dining room 9 x 13
Kitchen 8 x 8
Bedroom 11 x 14
Bedroom 9 x 12
Bedroom 10 x 11
Family room 12 x 21
Utility room 13 x 21
Required Occupancy 4

Racquet Club

1-bedroom apartment

Living room 12 x 18
Bedroom 11 x 16
Required Occupancy 1 or 2

University Commons

4-bedroom suite

Living room 251 sq.ft
Kitchen/
Dining room 65 sq.ft
Bedroom 102 sq.ft
Bedroom 102 sq.ft
Bedroom 102 sq.ft
Bedroom 102 sq.ft
Required Occupancy 4

Riverknoll

1-bedroom apartment

Living room 11 x 13
Kitchen 7 x 8
Bedroom 11 x 11
Required Occupancy 1 or 2

2-bedroom townhouse

Living room 11 x 13
Kitchen 9 x 11
Bedroom 11 x 11
Bedroom 9 x 11
Required Occupancy 3

3-bedroom townhouse

Living room 11 x 14
Dining room 9 x 11
Kitchen 7 x 11
Bedroom 11 x 11
Bedroom 9 x 11
Bedroom 10 x 11
Required Occupancy 4

Perkins Green

1-bedroom apartment

Living room 16 x 16
Dining room 8 x 8
Kitchen 4 x 8
Bedroom 12 x 13
Required Occupancy 1 or 2

2-bedroom apt. (PG I)

Living room 15 x 16
Dining room 8 x 9
Kitchen 4 x 4
Bedroom 11 x 16
Bedroom 11 x 12
Required Occupancy 4

2-bedroom apt. (PG II)

Living room 16 x 16
Kitchen 5 x 15
Bedroom 12 x 13
Bedroom 10 x 15
Required Occupancy 4

New RIT Housing Coming Soon!

In the near future, RIT will build new apartment housing on the west side of campus. Visit our website <http://housing.rit.edu> for updates.



Questions?

RIT Housing Operations:
585-475-2572 (voice)
585-475-2113 (TTY)

Hotline

585-475-5444 (voice/TTY)
Available from August 1 through August 22

R·I·T

Rochester Institute of Technology

Housing Operations
63 Lomb Memorial Drive
Rochester, NY 14623-5603
585-475-2572 (voice)
585-475-2113 (TTY)
585-475-5050 (fax)

Web site: <http://housing.rit.edu>

RIT will admit and hire men and women; veterans; persons with disabilities; individuals of any race, color, national or ethnic origin, sexual orientation, age, or marital status in compliance with all appropriate legislation.

4M-P0460-11/07-PMI-MEM
© 2007 Rochester Institute of Technology
All rights reserved